

# WOOD WORDS

## "HOBBS"ERVATIONS - PRESIDENT'S THOUGHTS AND COMMENTS

PUBLISHED BY THE KANSAS CITY WOODWORKERS GUILD

1717 WASHINGTON ST \* KANSAS CITY \* MO \* 64108

### IN THIS ISSUE...

**B**ack in the old days, I was a freshman in college, scared out of my wits during football camp at Davidson College. I kept my head down, tried my best to do what the coaching staff asked me to do. After having some ups and downs during pre-



*With my O-line brothers after beating our rival Lafayette College in 1991*

season camp, I sat down with my O-line coach – the legendary Bob Guarini – for feedback. There were plenty of criticisms, but I remember one sentence like it was yesterday: “You’re tough, you play with pain, and you’re coachable.” That attitude served me well as I went on to play at Lehigh University.

One thing I love about woodworking is learning new things. I have benefited from so many that have gone before me by being coachable. When my Dad told me how to hold a chisel, I did it. If I read an article by Eugene Landon in Fine Woodworking

Continued on Page 2

- ["HOBBS"ERVATIONS - President's Thoughts and Comments ..... 1](#)
- [Sponsorship News ..... 2](#)
- [Announcement of 2024 Official Guild Business Meeting & Elections of Certain Board of Director & Leadership Committee Director Positions ..... 3](#)
- [Rants and Ravings of the Vice President ..... 4](#)
- [Member Projects - David Roth and Terry Johnston ..... 5](#)
- [Message From the Safety Director Watching Out for One Another ..... 6](#)
- [Member Projects - Larry Inman and John Lunde ..... 8](#)
- [Crossroads Communications ..... 10](#)
- [Member Projects - Tom Smoller and Ron Lomax ..... 11](#)
- [From the Shop ..... 12](#)
- [Newsletter Editor/Publisher Wanted ..... 12](#)
- [A Place to Store Your Stuff ..... 13](#)
- [Treasurer's Reminder ..... 14](#)
- [April Library News ..... 14](#)
- [New Member Welcome ..... 15](#)
- [Notes from the Training Desk - Outgoing Director's Comments ..... 17](#)
- [First Friday's at the Kansas City Woodworkers' Guild 20 CNC SIG Roundup ..... 21](#)
- [Are You Ready for Rough to Ready ..... 22](#)
- [April Machine Safety Review ..... 24](#)
- [April 2024 Open Shop Schedule ..... 26](#)
- [Tentative May 2024 Open Shop Schedule ..... 27](#)
- [Guild Contacts and Service Directory ..... 28](#)

Continued from page 1

suggested what tool to use, I used that tool. And I'm still soaking up that knowledge every day, even though I have accomplished a few things along the way as a furniture maker.

That's where you come in. Are you coachable, or have you already "figured things out?" My college teammate (and great friend to this day) struggled that first year because he already thought he had arrived, which wasn't true. As we get into this year, think about some of the things you would like to learn, whether it's a new technique, design

principles, carving skills, or new technology, we have experts in the field at the Guild. And if you're the expert, become a coach. No matter who you are, you can learn, and you can teach. So next time you have the chance to learn something – Be Coachable!

Happy Spring

**Cal Hobbs**  
KCWG  
President  
[president@kcwg.net](mailto:president@kcwg.net)



## SPONSORSHIP NEWS

**M**embership brochures have been distributed to local sponsors and member discount providers. by the time you read this. The brochure update includes the new shop location and membership fee.

In addition to our sponsors and discount providers identified by their logo throughout this newsletter, we would like to thank the following for their contributions:

Anonymous: ..... KCWG Cap  
..... Toggle Clamp  
Interstate: ..... Beeswax Paste  
Matt Nowak: ..... Trivit  
John Van Goethem: ..... 1-2-3 Block Set

The Guild Sponsors and discount providers are identified by their logo throughout this newsletter. The Sponsors provide money and in-kind donations that support the Guild operation and most include discounts on store identified materials and tools to members. When purchasing materials or tools for your personal use, ask about member discounts that may apply.

**Does the Guild discount apply to ALL items in the store?** In general, the answer is **NO**. When shopping for or purchasing items from a sponsor, ask if the Guild discount applies to the item(s) in question. My personal experience is that the discount may apply to some, if not all, of the items. Generally, this question applies to manufactured items rather than material stock. **Some manufacturers do not allow discounts at the retail level other than the manufacturer's promotional discount. The store that discounts that item can lose their supplier.**

**Duane Miller**  
Director of  
Sponsorship



# ANNOUNCMENT OF 2024 OFFICIAL GUILD BUSINESS MEETING & ELECTIONS OF CERTAIN BOARD OF DIRECTOR & LEADERSHIP COMMITTEE DIRECTOR POSITIONS

The Kansas City Woodworkers’ Guild, in accordance to it’s constitution, by-laws and policy, holds its Annual Business Meeting at the April Membership Meeting every year. In 2024, this meeting will be held at 1717 Washington St., Kansas City, Mo 64108, on April 17, 2024, beginning at 7:00pm. At this meeting it is required by the guild’s constitution, by-laws and policy to hold elections for the 50% of the Officers and Directors positions that are completing their terms of office. We are announcing that the positions listed below are now open for election as nominations have closed. Online voting has been approved by Board of Directors for the Kansas City Woodworkers’ Guild. Votes placed online will be combined with votes cast in person at the Annual Business Meeting being held at the Crossroads Shop on April 17. Combining the online votes cast online with those cast in person will be used to determine the quorum necessary to hold and certify the official election of those officers and directors on the election ballot.

The following positions are being considered for election in 2024, and will be voted upon at the April Annual Business & Membership Meeting and the Secretary is currertly accepting and tallying votes being placed by the membership online.

**These are the Officer Positions to be elected:**

<b>Position</b>	<b>Name now in Nomination</b>
President.....	Cal Hobbs
Vice-President.....	Ron Haw
Member-at-Large .....	Craig Arnold

**These are the Leadership Committee Directors to be elected:**

<b>Position</b>	<b>Name now in Nomination</b>
Director of Membership .....	Jim Berard
Director of Communication .....	Brian Rorabaugh
Director of Training.....	Rich Higgason
Director of Safety.....	Steve Hicks

This year’s Nominating Committee has placed the above names in nomination and have certified that the members presented for election are eligible for serving in the positions that they have been nominated for.

Respectfully submitted, your Nominating Committee,



**Ron Haw**  
2024 Nominating  
Committee  
[nominations@kccwg.org](mailto:nominations@kccwg.org)



**Craig Arnold**  
2024 Nominating  
Committee  
[nominations@kccwg.org](mailto:nominations@kccwg.org)



**Tim Locke**  
2024 Nominating  
Committee  
[nominations@kccwg.org](mailto:nominations@kccwg.org)

## RANTS AND RAVINGS OF THE VICE PRESIDENT

If you haven't been to the shop lately, you're going to be in for a big surprise. The work on this mind numbing move continues on and everytime I go into the shop I am stunned. The front shop is now complete and fully operational. A few nips and tucks still remain; the classroom window still needs to be installed along with the window in the AV booth. Tim Lock is still doing some work to improve some of the lighting where shadows remain and he is doing that by installing some of the lighting that we harvested from the Mercier shop. After that is accomplished we will be seeking a solution to the noise pollution that invades the classroom and hand tool room. We are discussing some possible solutions, but that solution may be a few months away.

Below is our last, last, last look at



our home for the past 12 years on Mercier (I don't know who supplied these photos, but thank you). Its all cleaned out, we've been released from the final two months of our lease there and we are now fully entrenched in our



new home in the Crossroads Art District on Washington Street. A lot of memories were created and some endured on Mercier



but our future on Washington is looking brighter everyday. If you aren't taking advantage of the open shop hours; all that I can wonder is...WHY THE HELL NOT!? It's a great shop in a great location with a better and brighter future than we've ever had before. Don't let yourself be left behind or even worse, be left out. It's your decision and we'd all love to see you!

We dipped our toe into the pond on Friday, April 5, by participating in our inaugural Crossroads Art District's First Friday event. I understand that we had twenty-two potential member candidates tour the

shop. We sold nearly seven hundred dollars in member merchandise, also. Ongoing this will provide an outlet for your projects and maybe a way to buy someone special that Christmas gift that you felt was maybe just out of reach by bringing in a bit of cash selling your projects. We are researching ways to bring more of the twenty to thirty thousand people from the core of the Art District up the hill to our beautiful shop. The FirstFriday committee would love to hear your ideas on how we can market ourselves more effectively. Katherine O'Hara is the First Friday's Chairperson and please don't hesitate to send her a note with your comments and ideas. Her email is listed on the last page of the newsletter and I'm sure that you will be hearing more from her in the future, also. Your ideas won't ever happen as long as you sit back and wait for the 'they' to do something and then complain about the results. Stand up and be a part of the 'they' and help make it all happen successfully!!!!

Hey, I hope to see you in the shop,



**Ron Haw**  
Vice President

[vicepresident@kcwg.net](mailto:vicepresident@kcwg.net)

## MEMBER PROJECTS - DAVID ROTH AND TERRY JOHNSTON

**David Roth  
Jr. Majestic Roller Ball Pens  
and Resin Blanks**



**Photos Courtesy  
Neal Ray Shoger**



**Terry Johnston  
Oddities in Trees**

**Challenges Encountered:** *What is this and what to do with it?*

## MESSAGE FROM THE SAFETY DIRECTOR WATCHING OUT FOR ONE ANOTHER

As we continue the process of revitalizing the Kansas City Woodworkers' Guild Safety Program, key elements continue to take shape. Through outreach efforts, several Guild members have approached me with offers to serve (or continue to serve) on the Guild's Safety Committee, which is a critical team. Others I have approached have also agreed to serve. I would like to express my heartfelt thanks to each of these individuals for their support, their commitment to safety, and their willingness to step up as leaders and to serve our community. We will be scheduling our first formal meeting of the Safety Committee in the near future. Stay tuned – you'll be hearing more about and from the committee in the weeks and months ahead.



Safety Orientation sessions continue to take place according to the schedule. Recently I had my first opportunity to lead a Safety Orientation session. It was a very positive and gratifying experience. Nine new Guild members participated in the orientation (hooray for new members!!). During the general shop safety orientation portion of the session, one of the concepts we discussed was the notion that we encourage all guild members to keep their eyes open and to be proactive to ensure that safe practices are always observed in the shop. We encourage all members to engage in ongoing, constructive two-way performance feedback with one another when the occasion requires. I was impressed by this idea. Although sometimes that may mean that we need to initiate some uncomfortable conversations with other members working in the shop, I like to think of it as fostering a culture of “Watching one another’s backs,” as the saying goes. As I reflect on my experience leading my first KCWG Safety Orientation session, I have a little story I would

like to share that I hope will illustrate this idea of watching out for one another:

As I prepared for the meeting, one of the Shop Foremen – and a former Guild Safety Director – reached out to me to make sure I had all the instructional materials, reports, and forms needed to lead the session. He further offered to be on hand at the session to help get me started. Initially I declined, insisting that “I had this.” Later, I called him back to let him know that I wanted to take him up on his generous offer. When the time arrived, he was there in person and had already set up the training room for the session and had all the paperwork organized and in place.

In addition to what I have described above, on the day of the Safety Orientation, three Guild officers independently approached me with offers to provide support and guidance. The first was on the morning of the day of the session when our **Communication Director** called me to make sure I knew how to find the desktop computer used for presentations and how to successfully set up the display monitor so that I could show instructional content so that all participants could clearly view the material. He also offered to stop by the shop to make sure I was ready to go. Next, just prior to the start of the session, the **Vice President** of the Guild showed up and asked if he could help. I led most of the general shop safety orientation, but when it came time for the shop tour portion of the session, he pitched in and helped lead the tour by walking half of the class through the shop to discuss safety requirements for each major category of power machinery. His help enabled this portion of the session run smoothly and efficiently. He did this voluntarily because he simply wanted me to know that I wasn't alone on my “maiden voyage” and to bring about a successful outcome.

[Continued on Page 7](#)

Continued from page 6

Finally, just moments before “showtime,” the Guild’s **Events Director** made an unexpected appearance.

He told me he wanted to check in with me to make sure that I could operate the large display monitor so that all participants could easily and clearly view the instructional content.

I want to sincerely thank each one of these gentlemen for reaching out to me and for their support and direct assistance so that the session went smoothly and was a success. I will always appreciate their thoughtfulness. None of these individuals was obligated to help, but each one made it a point to take time out of their personal schedule to intervene and help make a positive difference for the event. It made me realize that this is a large part of what the Woodworkers’ Guild is all about – watching out for each other and intervening to make things better. This is what helps drive the KCWG forward. In a like manner, it is important that we adopt the same mindset when it comes to shop safety. Most of us come to the shop from locations all around the metro area to take advantage of Open Shop time or to participate in a training class, Skill-Builder event, or Special Interest Group. However, even though we represent a collection of individuals, we are also a community of like-minded crafts persons who share the same types of risks and have a stake in shop safety.

Not long after I joined the Guild, I was running some stock through one of the Thickness Planers at the shop for a project I had planned. One of the Shop Foremen (he was not on duty as Shop Foreman at the time) stopped me while I was working and frankly asked me to stand to the side of the planer as I fed the stock through so that I would avoid potential exposure to kickback if the stock became jammed between the rollers. Now, I had never experienced or even seen this phenomenon occur before. This type of hazard was not upper most in my mind. Although I had read the portion

of the Shop Safety Manual that recommended standing to the side of the planer to avoid kickback, I had forgotten that particular safe work practice. Initially, my pride was a little bruised, but I soon came to appreciate the feedback and the spirit in which it was given. I remember that intervention even many years later and I am grateful that this individual intervened on my behalf.

We all come to the Guild to create beautiful pieces and we should expect to have a fulfilling, creative experience. Let us also remember that we all have a stake in shop safety. I would urge each of you – if you see something that concerns you, speak up; talk to the Shop Foreman or a member of the Safety Committee. Have a wonderful experience in the shop and please remember to “Watch one another’s backs.”

**Steve Hicks**  
Director of Safety  
[dir.safety@kcwg.net](mailto:dir.safety@kcwg.net)



## MEMBER PROJECTS - LARRY INMAN AND JOHN LUNDE

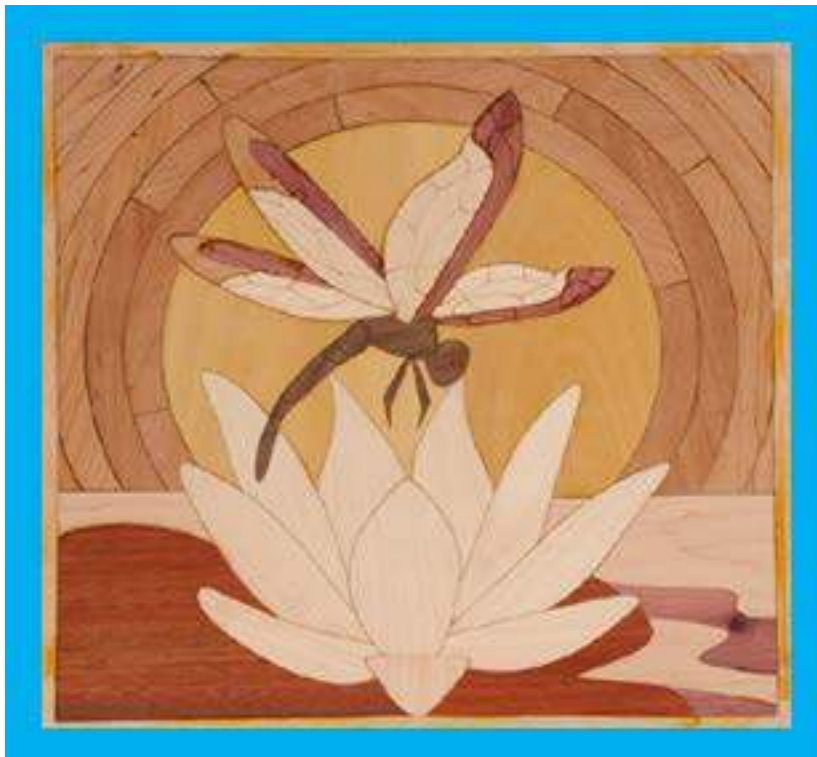
### **Larry Inman**

**Materials Used:** Spalted Hackberry  
and Orange Osage

**Finish Used:** Laquer



**Photos Courtesy  
Neal Ray Shoger**



### **Jon Lunde**

**Dragonfly on Lily**

**Points of Interest:** Entirely laser cut



# TAYLOR TOOLWORKS



VISIT TAYLOR TOOLWORKS at

[WWW.TAYTOOLS.COM](http://WWW.TAYTOOLS.COM)

## CROSSROADS COMMUNICATIONS

**W**e have been in our new home for a few months now. The space is taking shape and being refined into a more usable space as each day passes. With our new home comes the possibility to see new faces. There is a surprising amount of foot traffic that sweeps through the neighborhood we now occupy. Our upcoming signage will make the Guild easier to find for the passerby. As you enter, stop and talk to the passerby as they stare into the shop. New brochures have been printed and are available at the registration desk. I personally keep a few in my backpack so when I meet someone I can talk about membership and maybe recruit a new member.

During the First Friday's event I spoke with hundred(s?) of individuals as they visited our booth in the crossroads. I also visited with other merchants about their art and or displays. I asked many if they had thought of teaching their skills at the Guild. Possibly coming for a program or putting on a weekend class. Common comments from both merchants and visitors overheard were:

- I had no idea there was such a place!
- I get access to all of this equipment for 1 yearly price?
- You teach?!
- You have PC workstations for your CNC onsite?!
- I can present my work/art at a meeting?



There was a great deal of interest in the CNC/Laser equipment and the associated programs as part of the membership. There was also a serious interest in traditional woodworking and hand tools. Many questions about availability of resources and open shop hours.

All of this feedback leads me to believe we are ready to transition from the best kept secret to a robust Guild with a more dynamic footprint. Have you had a chance to talk with someone about the Guild and possible membership? Do you have your elevator/sidewalk speech ready?

### **Brian Rorabaugh**

*Director of  
Communications  
& Webmaster*

[dir.communications@kcwg.org](mailto:dir.communications@kcwg.org)



## MEMBER PROJECTS - TOM SMOLLER AND RON LOMAX



**Tom Smoller**  
**Newport Card Table**  
**Materials Used:** Cherry  
**Finish Used:** Shellac



**Ron Lomax**  
**Mountain Bluebird**  
**Materials Used:** Tupelo  
**Finish Used:** Oil  
**Challenges Encountered:** Painting

**Photos Courtesy**  
**Neal Ray Shoger**

## FROM THE SHOP

### HELP WANTED

**L**ooking for dedicated members to serve as Shop Foremen. We have several openings during the month for additional Open Shops but have no Shop Foremen to staff. Being a Shop Foreman is not a glamorous job and the pay is intangible. On the plus side you now know exactly where you will be every month during your shift.

### JOB REQUIREMENTS

1. Minimum one 3 hour (minimum) shift each month
2. Experienced woodworker
3. Willingness to step in when you

- see unsafe situations
4. Have an eye for safety

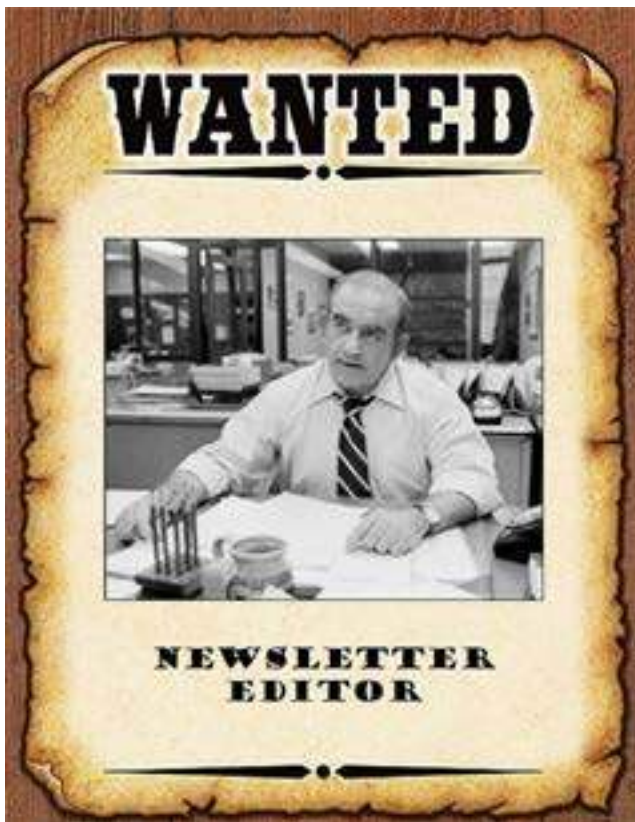
### FOREMAN DUTIES

1. Provide preemptive safety instruction
2. Enforce proper use and care of the shop and tools
3. Guide members in the proper use of tools in the shop
4. Keep the shop safe and operational during your shift

If this sounds like a position you're interested in send me an email and I'll provide you with the list of times and days available.

Thanks

**Chuck Saunders**  
Director of Assets  
[dir.assets@kcwg.net](mailto:dir.assets@kcwg.net)



## NEWSLETTER EDITOR/ PUBLISHER WANTED

**T**he Guild is looking for a new Newsletter Editor. If you have computer skills and experience in this area past or in the present. We could really use your help.

Vice President Ron Haw will help train you if you have any questions. This is a great way to help out the guild and the community by sending out information to those just not in KC. But other Guilds as well. Since they do check out the KCWG website and activities that we do as a guild.

It is also a great way to get involved with the guild and to meet other woodworkers like yourself. If interested. Please send your reply to David Roth; [secretary@kcwg.net](mailto:secretary@kcwg.net)

Thank you, David Roth KCWG Secretary

## A PLACE TO STORE YOUR STUFF

**H**ello, all. Aren't you so excited about our new space? We have windows! And in the Crossroads, too - who knew we could be so hip! (Do they still say 'hip'? Probably not). Anyway, we're settling in, the equipment is getting set up, and we are finding our way around. So. Speaking of storage.

There are 100 horizontal bins; stacked 5 high, 4 stacks in a row, 5 rows. The 60 middle bins (more easily accessed spots, not on the floor or on the top of the stack), are \$110 for the year, prorated accordingly. Right now, most of those, about 50, are rented.

Meanwhile, there are the bins at the top and bottom of each stack. Those are \$80 for the year, prorated. Most of those are still available.

People have complained (what?!) that the bins are too short for long boards, and they aren't wrong. A solution we are trying is to share with the person opposite you, so Bs would share with C's with the same unit #, D's with E's. (A's are out of luck in this regard). Anyhow, you use half of your space and half of theirs, and vice versa. Make sense? Of course not. (B3 and C3 are trying this, if you need a visual). But it's a thought. You have the same square footage, but it's a longer proportion. If you want to know who is opposite you, ask me. And I'll get them labeled eventually.

Meanwhile, I'm hoping that the back wall will be cleared soon; I have been reassured this will happen... Then I'll ponder options for people who want floor space - so they can have long boards vertically stored - and the rolling cart contingent. (Although really, do they have to be so big? You could do yoga in some of them).

We have a rule that I am trying to stick with, one bin to a person. Of course, there's people who want more space and enjoy being the exception to a rule, and you know who you/they are. I'm doing the best I can to make everyone happy. When everyone who wants a bin has a bin, then I'll rethink. Please understand. Try really really, I mean really, hard to work with me on that one.

Another rule: For crying out loud, don't just stack your wood anywhere. This is happening already? Already? Yes. Please put your name on it with the date, and then you and I can have an actual conversation about what you need and how I can help. But if you think I won't put your randomly placed wood, with no name on it and no response to my (admittedly kind of snippy) notes, in the scrap bin, you are mistaken. (Try me. I'm from Jersey). But I will give you notice, hence the snippy note. Please put your name and the date on stuff. (THERE'S ONE OF YOU OUT THERE ALREADY. PAY ATTENTION).

And finally, if you want storage, email me. There are still some middle bins available, and the dust is still settling (yes, I know, the pun is the lowest form of wit) on the invoicing, so more might appear. And there are quite a few of the high/low but cheaper bins available, which might work well for the, um, more agile members.

So, email me if you want storage or have any questions.

Thanks.

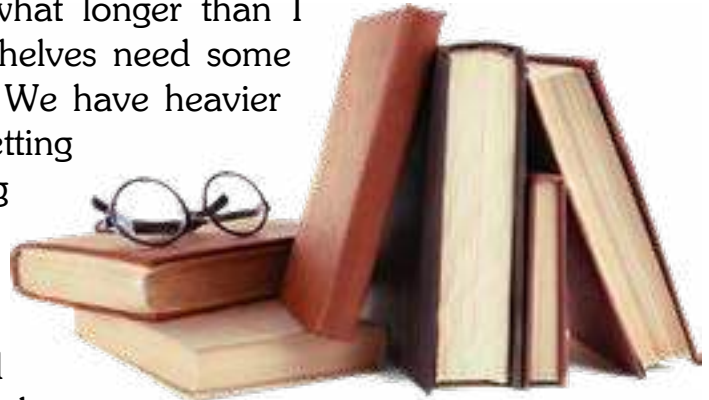


**Susan Lawlor**

Project Storage  
Rental Coordinator  
[storage@kcwg.net](mailto:storage@kcwg.net)

## APRIL LIBRARY NEWS

A short update. This is taking somewhat longer than I thought it would. We realized the shelves need some additional support strength (a shelf fell). We have heavier duty shelf pins with metal sleeves and are getting them installed. We will then work on getting the books in proper order. The Library computer is not yet installed but that is in progress. We will need some additional lighting between the rows of bookcases and that is on the list. We plan to sell some surplus magazines at the April meeting.



**Don Steele**  
KCWG  
Librarian  
[librarian@kcwg.net](mailto:librarian@kcwg.net)

## TREASURER'S REMINDER



Our monthly Financial Statements are available in the Members Only area of the website in the Financial section. Please review the reports and let us know if you have any questions. The treasurer email is [treasurer@kcwg.net](mailto:treasurer@kcwg.net)



**John Steyer**  
Treasurer  
[treasurer@kcwg.net](mailto:treasurer@kcwg.net)

# PLEASE WELCOME THESE 15 NEW MEMBERS WHO JOINED THE GUILD IN LATE MARCH & EARLY APRIL

<u>FIRST NAME</u>	<u>LAST NAME</u>	<u>HOMETOWN</u>	<u>STATE</u>	<u>MEMBERSHIP</u>	<u>JOINED</u>
Isaiah	Crabb	Overland Park	KS	Sawdust	3/11/2024
Jeff	O'Conner	Leavenworth	KS	Benefactor	3/11/2024
Aidan	Murray	Kansas City	MO	Sawdust	3/13/2024
Conor	Hudgins	Shawnee	KS	WW+	3/15/2024
David	Kean	Lee's Summit	MO	Sawdust	3/17/2024
Greg	Badgley	Shawnee	KS	Sawdust	3/18/2024
David	Farquhar	Olathe	KS	WW+	3/22/2024
Lori	Hill	overland park	KS	Sawdust	3/24/2024
Tasha	Zarda	Basehor	KS	WW+	3/29/2024
Vin	DiFrenna	Lee's Summit	MO	Sawdust	3/30/2024
Lydia	Perez	Olathe	KS	Regular	4/1/2024
Phil	Tierney	Kansas City	MO	Benefactor	4/1/2024
Cassie	Castillo	Kansas City	KS	WW+	4/2/2024
William Michael	Miller	Olathe	KS	WW+	4/2/2024
Kacey	Ziegler	Kansas City	MO	Sawdust	4/5/2024

**CURRENT MEMBERSHIP** ⇨ **728**



EXCLUSIVE MEMBERS OFFER

SAVE ON ENTIRE STORE

25%

COUPON CODE:

KCWG25



WWW.RX-SAFETY.COM

**OUR NEXT MEMBERSHIP MEETING  
IS JUST AROUND THE CORNER**

**THIS MONTH'S MEMBERSHIP MEETING  
WILL BE HELD AT THE GUILD SHOP AT  
1717 WASHINGTON ST ON  
WEDNESDAY, APRIL 17, BEGINNING AT 7PM**





**W**ow!! What a couple of months it's been. Between the move and putting stuff in it's place, to our first time at the First Friday at the Crossroads it is a new experience for us. But that said, Training goes on. Yesterday's Skill Builder, with our own Chuck Saunders about

Electric Motors for your woodworking machines, to Tom Smoller teaching us about the Newport Shell, to next's Skill Builder with Roland Mohler on the care and feeding of your Table Saw blades and router bits cleaning. The Skill Builders will keep on rolling. Remember, if you have a idea for a Skill Builder let Rich know.

The next round of the Basic Woodworking class kicked off last week. Its always fun to be with the new woodworkers finding their way and helping them find the safe and best way to learn it. The last Basic Woodworking class of the year will be posted soon. So keep and eye out if you're interested. I know Rich has some other things in the works. So watch for things to come.

That brings me to my final thoughts. As some of you know, I had a bit of a accident a year ago. I was able to make a comeback but it hasn't been easy. The great group of folks with the Training groups kept things going while I was laid up. I want to personally thank Rich Higgason, Norm Carpenter, Wes Myers, Grace Amrose, Tom Vece, Suresh Nayan, Tim Locke and the rest of the team. They all made sure that Training kept moving even though I wasn't moving. I originally had intended to do a second term but soon found that wasn't in my or your best interest. I found it best to pass the job along to Rich. I will still be around on Thursday evenings helping out. I just won't be in charge anymore. So I'll see you around the shop.

Always get your sawdust.

**Kevin Thomas**  
Director of  
Training



# Bloomer



# Hardwoods

## Offered Services

- Log Milling
- Custom Drying 20,000 bf
- Planing
- Straight lining
- Glued Panels
- Wide Belt Sanding
- Profile Replication
- Custom Moulding
- Template matching of existing pattern

**Phone: 816.330.3596**

**13585 45 Highway, Platte City, MO 64079**

**Hours: MONDAY - FRIDAY 8:30AM - 4:30PM**

## Products Available at Bloomer Hardwoods

- Ash 4/4 & 8/4
- Cedar Aromatic
- 4/4, 8/4, & 12/4
- Cherry 4/4, 8/4 & 12/4
- Maple 4/4
- Pecan 4/4 & 8/4
- Red Oak 4/4 & 8/4
- Walnut 4/4 & 8/4
- White Oak 4/4
- Plywood for Cabinets
- And many other Local Hardwoods

## PLEASE SUPPORT OUR KCWG SPONSORS

COMPANY NAME	ADDRESS/WEBSITE/DESCRIPTION	KCWG DISCOUNT AMOUNT
	<b>L&amp;K Hardwoods (Mahogany Sponsor)</b> 3101 N Lentz Road • Independence, MO 816.249.4400 <a href="mailto:landkhardwoods@gmail.com">landkhardwoods@gmail.com</a> • <a href="http://landkhardwoods.com">landkhardwoods.com</a>  Custom milling, kiln drying, hardwood lumber, live edge slabs, and custom furniture. Rubio Monocoat dealer.	<b>10%</b> Show current membership card on order/payment
	<b>Taylor Toolworks (Mahogany Sponsor)</b> Columbia, MO 573.397.6432 <a href="http://taytools.com">taytools.com</a>  Specialty hand tools, supplies and fixture and jig hardware.	<b>10%</b> INPUT coupon code KCWG10 to receive discount
	<b>Rockler (Cherry Sponsor)</b> 15340 West 119th Street • Olathe, KS 763.478.8214 <a href="http://rockler.com/olathe-store">rockler.com/olathe-store</a>	<b>10%</b> Show current membership card on order/payment-Some Restrictions May Apply
	<b>Walrus Oil (Cherry Sponsor)</b> Springfield, MO 816.848.8598 • <a href="https://walrusoil.com/">https://walrusoil.com/</a>  Oil and wax finishes for cutting boards, furniture and leather and waterless skincare.	<b>10%</b> Identify KCWG membership on order Coupon Code: KCWG
	<b>Lie-Nielsen Toolworks (Cherry Sponsor)</b> Warren, ME 207.273.2520 <a href="http://lie-nielsen.com">lie-nielsen.com</a>  Hand tools, sharpening and tool care products, workbenches and education for woodworkers.	<b>10%</b> Offered only on purchases made at the annual guild tool show. Must show current membership card on order/payment at the guild
	<b>(Pine Sponsor)</b> <b>Phone: 816.330.3596</b> 13585 45 Highway Platte City, MO 64079  <b>Hours: MON - FRI 8:30AM - 4:30PM</b>	

## FIRST FRIDAY'S AT THE KANSAS CITY WOODWORKERS' GUILD

**O**ur April, First Fridays Event was a success! We sold a grand total of \$675 worth of fine woodworking from both the Kansas City Woodworkers Guild and the Kansas City



Woodturners. We are hopeful to do even better sales on Friday, May 3rd!

In April, we had 23 members selling everything from charcuterie boards and toys to fine art and high end furniture. We are incredibly grateful to our sellers without whom there would have been no opening at all. We cannot wait to have your work at next month's sale! Selling with us is an amazing deal and very simple. Unlike other craft sales and craft seller's websites, our sellers pay NOTHING to participate AND keep 80% of the sale price! KCWG keeps a

20% commission to offset the cost of the event.

To become a seller, all it takes is signing up on the Sign Up Genius (coming soon), bringing your work to the Guild sometime in the week leading up to First Friday, and filling out a little paperwork while you are there. We'd absolutely love for you to come to the event as well, but it is not required. Your check from any sales will be in the mail about two weeks following the event, and you will need to pick up any unsold work



within a week of the event. Be on the lookout for the May Seller's Sign Up!

Huge shout out to our volunteers who staffed the



event! You did such wonderful work. Because of members like you greeting guests and giving tours of the shop, we had enormous interest among our visitors in becoming members. If you are outgoing and want to help us get new members, come volunteer! Sign up for May First Fridays Volunteers is coming soon!

Seller, volunteer, or no, ALL Y'ALL should come visit us for the Next First Fridays, May 3rd, 5 pm to 9pm and bring a friend! It's a great time here at the Guild, plus just a short walk to food, drinks, and fabulous artists from across the Kansas City art scene.

See You At First Fridays!

**Katherine O'Hara**

KCWG Chairperson

First Fridays Committee

[FirstFridaysChair@kcwg.net](mailto:FirstFridaysChair@kcwg.net)



## CNC SIG ROUNDUP

**CNC SPECIAL INTEREST GROUP (SIG) WILL MEET ON THE 3RD MONDAY OF EACH MONTH AT 6:30 PM IN 2024**



### ***New version of CNC Software coming to the Guild.***

**V**ectric, the maker of two of the software programs (Aspire and VCarve Pro) available for Guild members to use for designing and machining projects on the Guild CNC, has announced the release of version 12 of both Aspire and VCarve Pro for April 2024. I have not seen the new software but have watched the teaser videos released by Vectric and I am excited about the possibilities.

For Guild members that use the Makerspace VCarve Pro Version 11.5 this means they will need to update their personal computer to the new version. My plan is to send an email to all members currently using Version 11.5 as soon as I have the information from Vectric on how to configure Version 12 so that it will mesh seamlessly with the Guilds

computers. Guild members using older versions of VCarve Pro will also need to upgrade to the newer version.

There are many new and exciting features in Version 12 including a new user interface, some new toolpath options and new tools.

One of the new tools is the ability to look at a 3D cross section of your project. I think this will be very helpful when designing and machining a two-sided project. Also, the new version is reported to have a v-carve inlay toolpath which will allow for the easy creation of projects where one piece of wood is seamlessly inlaid into another.

Rumor has it that Version 12 will also have the ability to program the placement of your clamps that hold your material to the table. This function will allow the user to assure that the CNC bit will not cut into the clamps when machining your project.

Vectric is creating 110 new tutorial videos to introduce users to the new features found in Version 12, so there should be ample resources to learn how to use the new software.

The April CNC SIG will meet on Monday, April 15 at 6:30 pm in the Guild classroom. The agenda will include a “Show and Tell” opportunity for members to display and discuss projects they have worked on that involved the CNC. Also planned is an “Open Question and Answer” time where any participant can ask questions of the group on subjects involving the CNC. If Vectric has released the new version of their software we will also have a discussion and demonstration of the new features.

The CNC SIG is open to all members of the Guild and their guest. If you have an interest in learning more about the CNC plan on attending the CNC SIG April 15.



**Ed Stewart**  
CNC SIG  
Co-Coordinator  
[cncSIG@kcwg.net](mailto:cncSIG@kcwg.net)

# ARE YOU READY FOR ROUGH<sup>2</sup> READY

One of the alternative ways for new Kansas City Woodworkers' Guild members to earn their Green Nametag and gain full shop privileges is by signing up for and taking the **Rough to Ready** class. We schedule several dates for this class each month with various time slots, meaning that almost everyone wanting to take the class can find a class time that is convenient for them.

**Rough to Ready** is a great way for the beginning or novice woodworker to get basic hands-on experience with many of the machines in the Kansas City Woodworkers' Guild shop. In the class, each participant will build a 9"x 5" box from rough-cut lumber. As you go through the process of building your box, we will discuss the safety features of each machine that we use and you will receive the opportunity to learn how to setup each of those machines to successfully build your project. You will learn to setup and actually use the miter saw, jointer, planer, band saw, table saw (ripping, cross cutting and dadoes), router table and wide belt sander. Not only will you leave the class with a completed box ready to apply finish to, but with enough wood to build another box on your own to help you perfect your newly learned skills.







**Rough to Ready** classes are typically limited to the instructor and one or two participants. Cost is a very reasonable \$50.00 for those with a Sawdust Maker membership, and just \$40.00 for members with a Woodworker Plus or Benefactor membership. Classes last 4 - 6 hours with breaks as needed.

A Green Badge is not necessary to take a **Rough to Ready** class but does require you to successfully complete the Guild's Online Safety test with a passing score before you can sign up for the class. Your successful participation in the class will result in your Green Tag being awarded. Members who have taken the Guild's Safety Orientation and have had their Green Tag issued are also welcome to take any available **Rough to Ready** class.

To sign up for one of the many available **Rough to Ready** classes, make sure that you have met the prerequisite of passing the Kansas City Woodworkers' Online Safety Test.

We look forward to seeing you in one of our upcoming **Rough to Ready** classes.

PLEASE SUPPORT OUR KCWG SPONSORS

COMPANY NAME	ADDRESS/WEBSITE/DESCRIPTION	KCVG DISCOUNT AMOUNT
	<p><b>Woodcraft</b>                      8645 Bluejacket Road • Lenexa, KS                      913.599.2800  <a href="http://woodcraft.com/stores/kansascity">woodcraft.com/stores/kansascity</a>                      Power tools and accessories, hand tools, fasteners, hardware, wood, finishes, clamps, workbenches, personal safety equipment and education.</p>	<p><b>10%</b>                      Show current membership card on order/payment</p>
	<p><b>Metro Hardwoods</b>                      4243 S Noland Road • Independence, MO                      816.373.1710  <a href="http://metrohardwoodsinc.com">metrohardwoodsinc.com</a>                      Hardwood lumber, plywood, finishes, saw blades and bits.</p>	<p><b>10%</b>                      Show current membership card on order/payment</p>
	<p><b>Neal Ray's Photography</b>                      9 E Kansas Street • Liberty, MO                      816.582.5968  <a href="mailto:nealraysphoto@gmail.com">nealraysphoto@gmail.com</a>                      Photographic studio portraits.</p>	
<p><b><u>SUPERIOR GRINDING</u></b></p>	<p><b>Superior Grinding</b>                      5315 Raytown Road • Raytown, MO                      816.561.8665  <a href="http://superiorgrindingllc.webstarts.com">superiorgrindingllc.webstarts.com</a>                      Sharpening tools used by professionals and homeowners.</p>	<p><b>10%</b>                      Show current membership card on order/payment</p>



## APRIL MACHINE SAFETY REVIEW

# Thickness Planer

Like a jointer, the thickness planer removes material from the surface of a board. It can be distinguished from a jointer in that the cutter head is mounted above the feed table to remove material from the upper face of the board. It is used to smooth and flatten the second face of a board that has been jointed, ensuring that the two faces are parallel.



### Safety Rules

1. Adjust the planer to remove no more than 1/16" per pass.
2. To avoid kickback, do not run boards with loose knots through the planer.
3. Plane only boards longer than 12".
4. When planing stock 3/8" thick or less, use a backer board. For stock thinner than 1/4", use a belt thickness sander with a backer board instead.
5. When using the planer, stand to the side of the machine to avoid kickback or shattering of the wood.
6. As you feed boards into the planer, be careful not to get your fingers pinched between the board and the in-feed table.
7. Unplug the machine to make any adjustments other than the depth of the cut and the rate of feed.
8. If the board is thicker on one end than the other and jams in the machine, do not shut it off. Slowly crank open the height adjustment wheel until the board resumes feeding through the planer.
9. Always run wood through the planer with the grain running parallel to the



## PLEASE SUPPORT OUR KCWG SPONSORS

COMPANY NAME	ADDRESS/WEBSITE/DESCRIPTION	KCVG DISCOUNT AMOUNT
 <p><b>Schutte</b> LUMBER CO. Since 1880</p>	<p><b>Schutte Lumber Company</b> 3001 Southwest Blvd. • Kansas City, MO 816.753.6262 • <a href="http://schuttelumber.com">schuttelumber.com</a> Timbers, cedar, siding and pattern profiles, specialty hardwoods, treated lumber, Festool power tools, decking, fasteners and hangars.</p>	<p><b>10%</b> Show current membership card on order/payment</p>
   <p>Phillips Safety Products, Inc.</p>	<p><b>Phillips Safety Company</b> • Middlesex, NJ 888.245.6638 <b>Three websites to serve KCWG members, each offering a 25% member discount (Use code KCWG25)</b> <a href="http://rx-safety.com">rx-safety.com</a> - Prescription safety glasses, reading and magnifying glasses, hearing protection <a href="http://myeyewear2go.com">myeyewear2go.com</a> - Eyeglasses, sunglasses, prescription sunglasses, sports and specialty glasses <a href="http://phillips-safety.com">phillips-safety.com</a> - Laser safety glasses, welding and IR safety glasses, radiation protection, glassworking eyewear</p>	<p><b>25%</b> INPUT coupon code KCWG25 to receive discount</p>
 <p><b>KATSURA</b></p>	<p><b>Katsura Cutlery</b> Houston, TX <a href="http://katsuracutlery.com">katsuracutlery.com</a> Knives, knife blanks and knife making instructions.</p>	<p><b>10% 15 - 20%</b> on some sales items Identify KCWG membership on order</p>
 <p><b>Lee Valley</b></p>	<p><b>Lee Valley</b> Reno, NV 888.983.1865 <a href="http://Leevalley.com">Leevalley.com</a> Hand tools, power tools, hardware and accessories.</p>	<p><b>15%</b> educational Application form available at Guild</p>
 <p><b>LIBERTY</b> HARDWOODS, INC.</p>	<p><b>Liberty Hardwoods</b> 3900 N Kentucky Avenue • Kansas City, MO 816.231.0852 <a href="http://libertyhardwoodsinc.com">libertyhardwoodsinc.com</a> Hardwood lumber, plywood, trim, hardware and accessories.</p>	<p><b>10%</b> Show current membership card on order/payment</p>
 <p>The URBAN LUMBER Company <a href="http://urbanlumberco.com">urbanlumberco.com</a></p>	<p><b>The Urban Lumber Company</b> 7200 E Hwy 40 • Kansas City, MO 816.888.7947 • <a href="http://urbanlumberco.com">urbanlumberco.com</a> Locally harvested wood. Custom milling, green and dried lumber, table bases and PVC stickers.</p>	<p><b>10%</b> Show current membership card on order/payment</p>

# APRIL 2024 OPEN SHOP SCHEDULE

day	April	Date	9am	10	11	12	1	2	3	4	5	6	7	8	9pm
Monday	April	1			Dom Fiorella			Ron Haw				Gary Strohm			
Tuesday	April	2	Gary Creek			Craig Arnold							Kara Paris		
Wednesday	April	3		Barb Hinton								LC Meeting			
Thursday	April	4	Gary Mielke									Training			
Friday	April	5										Crossroads Art District - FIRST FRIDAY EVENT			
Saturday	April	6	Mike Jones					Basic Skills Class Free Just Show Up		George Rexroad					
Sunday	April	7		Chuck Saunders					Chris McCauley						
Monday	April	8	John Sloss				Ron Haw					Woodturners General Meeting			
Tuesday	April	9	Matt Nowak			Ron Lomax			Craig Arnold			Roland Mohler			
Wednesday	April	10	Bob Caldwell									Scrollsaw SIG			
Thursday	April	11	Gary Mielke									Training			
Friday	April	12		Curtis Alexander				Ed Stewart							
Saturday	April	13	George Rexroad				Norm Carpenter								
Sunday	April	14		Rob Young						Mark Waugh					
Monday	April	15	Jerry Thompson					Ron Haw				Gary Strohm			
Tuesday	April	16	Gary Creek			Craig Arnold						CNC SIG 6:30			
Wednesday	April	17					Tim Locke					General Meeting			
Thursday	April	18	Gary Mielke									Training			
Friday	April	19													
Saturday	April	20	Gary Mielke					Tom Smoller							
Sunday	April	21		Chuck Saunders						Chris McCauley					
Monday	April	22	John Sloss					Ron Haw				Kolton Stimpert			
Tuesday	April	23	Matt Nowak			Ron Lomax			Craig Arnold			Roland Mohler			
Wednesday	April	24	Bob Caldwell									Kevin Thomas			
Thursday	April	25	Gary Mielke									Training			
Friday	April	26						Ed Stewart				Rick Chandler			
Saturday	April	27	George Rexroad				Don Steele			Joshua Baldwin					
Sunday	April	28		Rob Young				Handtool SIG		Wayne Peterson					
Monday	April	29						Ron Haw							
Tuesday	April	30	Gary Creek			Craig Arnold						Rick Chandler			

Edited MARCH 30, 2024

**TENTATIVE**

# 2024 OPEN SHOP SCHEDULE

Day	Month	Date	9am	10	11	12	1	2	3	4	5	6	7	8	9pm
Wednesday	May	1		Barb Hinton								LC Meeting			
Thursday	May	2	Gary Mielke									Training			
Friday	May	3										Crossroads Art District - FIRST FRIDAY EVENT			
Saturday	May	4	Mike Jones					Basic Skills Class Free Just Show Up	George Rexroad						
Sunday	May	5		Chuck Saunders					Chris McCauley						
Monday	May	6			Dom Fiorella		Ron Haw					Gary Strohm			
Tuesday	May	7	Gary Creek			Craig Arnold							Kara Paris		
Wednesday	May	8	Bob Caldwell									Scrollsaw SIG			
Thursday	May	9	Gary Mielke									Training			
Friday	May	10		Curtis Alexander			Ed Stewart								
Saturday	May	11				Norm Carpenter									
Sunday	May	12		Rob Young						Mark Waugh					
Monday	May	13	John Sloss				Ron Haw					Woodturners General Meeting			
Tuesday	May	14	Matt Nowak			Ron Lomax		Craig Arnold				Roland Mohler			
Wednesday	May	15				Tim Locke						General Meeting			
Thursday	May	16	Gary Mielke									Training			
Friday	May	17													
Saturday	May	18					Tom Smoller								
Sunday	May	19		Chuck Saunders						Chris McCauley					
Monday	May	20	Jerry Thompson				Ron Haw					Gary Strohm			
Tuesday	May	21	Gary Creek			Craig Arnold							CNC SIG 6:30		
Wednesday	May	22	Bob Caldwell									Kevin Thomas			
Thursday	May	23	Gary Mielke									Training			
Friday	May	24					Ed Stewart					Rick Chandler			
Saturday	May	25				Don Steele			Joshua Baldwin						
Sunday	May	26		Rob Young				Handtool SIG	Wayne Peterson						
Monday	May	27	John Sloss				Ron Haw					Kolton Stimpert			
Tuesday	May	28	Matt Nowak			Ron Lomax		Craig Arnold				Roland Mohler		Carving SIG	
Wednesday	May	29													
Thursday	May	30	Gary Mielke									Training			
Friday	May	31										Norm Carpenter			

Updated on MARCH 30, 2024

# GUILD ACTIVITIES AT THE SHOP

Always check the guild website before leaving home to be sure that a scheduled event is actually taking place.

There will also be times when the shop will be closed to open shop periods due to a special meeting, class or event. These closures will be clearly noted on the monthly open shop schedule and are typically highlighted by a color other than the green background that normally indicates an open shop period.

## BOARD, LEADERSHIP, COMMITTEE & GENERAL CONTACTS DIRECTORY

President .....	Cal Hobbs .....	<a href="mailto:president@kcwg.net">president@kcwg.net</a>
Vice-President.....	Ron Haw .....	<a href="mailto:vicepresident@kcwg.net">vicepresident@kcwg.net</a>
Secretary .....	David Roth .....	<a href="mailto:secretary@kcwg.net">secretary@kcwg.net</a>
Treasurer.....	John Steyer .....	<a href="mailto:treasurer@kcwg.net">treasurer@kcwg.net</a>
Member-at-Large.....	Craig Arnold .....	<a href="mailto:memberatlarge@kcwg.net">memberatlarge@kcwg.net</a>
Director of Assets .....	Chuck Saunders .....	<a href="mailto:assets@kcwg.org">assets@kcwg.org</a>
Director of Communications.....	Brian Rorabaugh .....	<a href="mailto:dir.communications@kcwg.net">dir.communications@kcwg.net</a>
Director of Events .....	Chris McCauley .....	<a href="mailto:dir.events@kcwg.net">dir.events@kcwg.net</a>
First Friday (Crossroads Art District Participation).....		<a href="mailto:firstfridayschair@kcwg.net">firstfridayschair@kcwg.net</a>
Librarian.....	Don Steele .....	<a href="mailto:librarian@kcwg.net">librarian@kcwg.net</a>
Newsletter Editors.....	Ron Haw & Stephan Vandembroucke .....	<a href="mailto:newsletter@kcwg.net">newsletter@kcwg.net</a>
Director of Membership .....	Jim Berard.....	<a href="mailto:dir.membership@kcwg.net">dir.membership@kcwg.net</a>
Director of Programs .....	Matt Nowak.....	<a href="mailto:dir.programs@kcwg.net">dir.programs@kcwg.net</a>
Director of Safety .....	Steve Hicks.....	<a href="mailto:dir.safety@kcwg.net">dir.safety@kcwg.net</a>
Director of Sponsorship.....	Duane Miller .....	<a href="mailto:dir.sponsorship@kcwg.net">dir.sponsorship@kcwg.net</a>
Director of Training .....	Kevin Thomas.....	<a href="mailto:traininggroup@kcwg.net">traininggroup@kcwg.net</a>
Asst Director of Training.....	Brent Murphy.....	<a href="mailto:assisttraining@kcwg.net">assisttraining@kcwg.net</a>
Videos - Questions, comments & suggestions.....		<a href="mailto:teamvideo@kcwg.org">teamvideo@kcwg.org</a>
Web Master.....	Brian Rorabaugh .....	<a href="mailto:webmaster@kcwg.net">webmaster@kcwg.net</a>

## ESSENTIAL LINKS & SERVICES

Kansas City Woodworkers Guild Website.....	<a href="https://kcwg.org">https://kcwg.org</a>
Guild Training and Available Classes .....	<a href="http://kcwg.org/classes/">http://kcwg.org/classes/</a>
Members Only Section (Password Rqd).....	<a href="http://kcwg.org/member-only-area/">http://kcwg.org/member-only-area/</a>
Guild Photo Bank and Upload Center .....	<a href="https://member.kcwg.org/photo-submission/">https://member.kcwg.org/photo-submission/</a>
Place a Classified Ad .....	<a href="mailto:classifieds@kcwg.net">classifieds@kcwg.net</a>
Project Storage Area (rental and questions).....	<a href="mailto:storage@kcwg.net">storage@kcwg.net</a>
KCWG Facebook Page.....	<a href="https://www.facebook.com/kcwg">https://www.facebook.com/kcwg</a>
KCWG Videos .....	<a href="https://kcwg.org/videos">https://kcwg.org/videos</a>

### KANSAS CITY WOODWORKERS' GUILD SPECIAL INTEREST GROUPS (SIG'S)

Carving SIG .....	<a href="mailto:carvingSIG@kcwg.net">carvingSIG@kcwg.net</a>
CNC SIG .....	<a href="mailto:cncSIG@kcwg.net">cncSIG@kcwg.net</a>
Hand Tool SIG .....	<a href="mailto:handtoolSIG@kcwg.net">handtoolSIG@kcwg.net</a>
Laser SIG .....	<a href="mailto:laserSIG@kcwg.net">laserSIG@kcwg.net</a>
Scroll Saw SIG .....	<a href="mailto:scrollsawSIG@kcwg.net">scrollsawSIG@kcwg.net</a>

VISIT  
THE KANSAS CITY  
WOODWORKERS' GUILD  
ONLINE AT  
[WWW.KCWG.ORG](http://WWW.KCWG.ORG)

