

WOOD WORDS



Kansas City Woodworkers' Guild

PUBLISHED BY THE KANSAS CITY
WOODWORKERS GUILD

3189 MERCIER ST * KANSAS CITY * MO * 64111

IN THIS ISSUE...

Hobbs "ervations"	1 & 2
President's Comments	2, 3 & 4
Treasurer's Report	4
2022 Election of Officers	5
CNC SIG	7 & 8
From the Shop	8
Veterans Flag Cases and Urns	10
Handtool SIG	11
From the Training Desk	13
Laser Engraving SIG	15
Sponsorship	17
Librarian's Corne.....	17
Who Are We?	18
Membership Meeting Program	18
From the Membership Desk	20
Woodwords: The Podcast.....	20
Communications Update	22 & 23
Safety Thoughts and Comments.....	23
David Roth Marquertry	25
New Member Welcome	27
Safet;y Review	28
KCWG Contact Information.....	29

"HOBBS" ERVATIONS

Last month, I talked about taking on too much, setting deadlines and then feeling the pressure of having too much on my plate. If you remember, I said that the antidote to those negative feelings is to enjoy what you are doing at the time. Day by day, hour by hour.

I'm happy to share that my family room ceiling project



has been really enjoyable! Putting up the shiplap boards was a success that would make Chip Gaines proud, although my right shoulder might disagree. Climbing up and down the scaffold has reminded me that I'm not quite as young as I think I am, but all in all, I'm happy

with the way it has all progressed.

And along the way, it has required a lot of woodworking. Hauling the 1x12s from Menards may have been tricky in my 5 and a half foot bed pickup, but once I got them home the fun began. I glued them up and was able to take one of my favorite tools, the drawknife, and chamfered off the corners. As you may know, the beauty of a drawknife is how fast you can move material, but the danger always lurked because of splitting the wood. Well on a distressed beam, it doesn't matter! Then

Continued on Page 2

Continued from page 1

I beam them up with varying passed with a hatchet,



scratch awl, flatbar, etc. Followed by a quick sloppy coat of minwax special walnut, and I had beams.

The effect was pretty good, and it was nice to work in a way that didn't rely on any precision or accuracy, the rougher the work, the better in a lot of ways. And you should have seen the pile of cedar scraps on my garage floor.

Once the beams were up, I hung a new chandelier that

my wife and I picked out. It was great to use some of



my woodworking skills to enhance our home.

So, in conclusion, no matter what you're working on, dive in and enjoy.

Cal Hobbs
KCWG
Vice President



PRESIDENT'S THOUGHTS AND COMMENTS

March is here, spring is around the corner, St. Patrick's Day is next week. This year is sliding by. I've noticed some bad random-orbit sanding techniques in the shop lately.



Keep the pad flat. If you need to use the edge of the pad to sand an area of tear out, you are using the wrong tool. Sharpen up a card scraper to remove tear out.

The weight of the sander is all the sandpaper needs to perform satisfactorily. Pushing down on the sander actually makes more work because the added pressure traps loosened sanding grit and wood dust creating swirl marks (commonly seen as pigtails) and melting the hooks on the pads. With fewer hooks on the pad the sandpaper has fewer loops holding the paper to the pad.

If you decide to use dust extraction while sanding, turn the volume down. High volume vacuum sucks the sander down to the board, trapping loosened grit and dust between the sandpaper and the wood

Continued on Page 3

Continued from page 2

creating pigtails. Lower vacuum allows grit and dust to evacuate better.

The shop has a FOUND drawer located to the left of the router tables. Generally, items found unattended are returned to their owners within an Open Shop session. Items that cannot be paired up with an owner are placed in the FOUND drawer.

Cups, shirts, knurled knobs, combination square scribes, notebooks, and plans are some of the items currently in the drawer. Photos of those items plus a variety of jackets and coats can be found elsewhere in this issue of Wood

Words. If you recognize something, stop in and get reunited with your items.

That's it from the shop this month. See you in the shop and work safely. Masks are optional for the vaccinated and boosted, and strongly encouraged for the unvaccinated. The Guild will continue this policy unless the city mandates something different.

Sincerely,
Craig Arnold
 KCWG
 President



ITEMS LEFT BEHIND THAT WANT TO GO HOME



Continued on Page 4

Continued from page 3



FINANCIAL UPDATE

Membership renewal is complete. The Guild has approximately 800 members to start off 2022. Both the renewal rate and new members were above expectation and as a result the Guild is in good financial shape for 2022. I would like to thank Jim Berard for the great job in keeping everything organized for the last three months and having another successful membership drive.

During February the Guild upgraded the kitchen with a new countertop and sink. Central Surfaces, our neighbors to the South, provided the countertop and sink. Now we all need to make sure we keep it clean and looking good. The Guild also purchased a new 14" bandsaw which will be put into service this month.

The Guild has two fundraisers in the works and the largest is building turf boxes. If that project is completed successfully, we will have a very good year financially.

The monthly "Statement of Operation" is available on the Guild website in the "Members Only" section. The report provides detail on the revenue received and the disbursements made. Please review the report and contact me if there are questions.

**Gary
Mielke**
Treasurer



2022 ELECTION OF BOARD OF DIRECTORS AND LEADERSHIP COMMITTEE MEMBERS

The KCWG BOD members & LC directors hope that you and your family are healthy and safe.

The Guild directors and Board member elections will be conducted via email again in 2022 due to the continuing interruption of our monthly General Meetings due to the pandemic and low General Meeting attendance. The Woodworkers Guild Board approved the procedure outlined below on March 2, 2022.

The Guild is seeking Members interested in contributing to the Guild management through volunteer participation in the Leadership Committee and Board of Directors. Assistants to Leadership Positions are also needed. New Board members and Leadership Committee directors will be elected April 20, 2022 via electronic ballot, all ballots must be received before April 30. (KCWG must receive 80 votes to meet quorum)

Names in **bold and underlined** are from the nominating committee, but we are accepting nominations from the "floor." Please add your nominee's name in the blank line area, be sure you have your nominee's permission and an indication of their willingness to serve a two-year term. Send write-in nominations to: Tlocke@lockeami.com

The Guild Director and Board Member elections for the even year, 2022, are as follows:

Nominations for Guild Board Member Positions (President, Vice-President, and Member-at-Large):

- **Cal Hobbs – President** Write in nomination _____
- **Mike McCauley – VP** Write in nomination _____
- **Craig Arnold – Mbr-at-Large** Write in nomination _____
- **David Roth** has agreed to take over as Secretary (for 3 years) if Mike is elected as VP

Nominations for open positions on the Guild Leadership Committee have been made, as follows:

- Training: **Kevin Thomas** Write in nomination _____
- Membership: **Jim Berard** Write in nomination _____
- Safety: **Open-TBD** Write In nomination _____
- Communications: **Open-TBD** Write In nomination _____

The term for each position is two years, other Board and Director positions are elected in odd numbered years.

If you have an interest in nominating a candidate, then please contact any member of the Nominating Committee before the election or reply to this article by contacting secretary@kcwoodworkersguild.org

If you need to address the nominating Committee please contact Tim Locke, Member at Large; MemberAtLarge@kcwoodworkersguild.org; Tlocke@lockeami.com; 816 392 9889 cell; or Mike McCauley mike.mccauley.KCWG@gmail.com; 913-207-3901 cell.

The actual election e-mail will go out on April 19th, this serves as your 10-day notice of the election.

Yours in Service,
Mike McCauley,
secretary@kcwoodworkersguild.org

**Mike
McCauley**
KCWG
Secretary



Bloomer



Hardwoods

Offered Services

- Log Milling
- Custom Drying 20,000 bf
- Planing
- Straight lining
- Glued Panels
- Wide Belt Sanding
- Profile Replication
- Custom Moulding
- Template matching of existing pattern

Phone: 816.330.3596

13585 45 Highway, Platte City, MO 64079

Hours: MONDAY - FRIDAY 8:30AM - 4:30PM

Products Available at Bloomer Hardwoods

- Ash 4/4 & 8/4
- Cedar Aromatic
- 4/4, 8/4, & 12/4
- Cherry 4/4, 8/4 & 12/4
- Maple 4/4
- Pecan 4/4 & 8/4
- Red Oak 4/4 & 8/4
- Walnut 4/4 & 8/4
- White Oak 4/4
- Plywood for Cabinets
- And many other Local Hardwoods

CNC ROUNDUP

CNC SIG HAPPENINGS



CNC – A new tool to use

Have you wanted to learn how to operate the CNC? Do you have a project that you think could be improved by using the CNC? Do you feel that the challenge is overwhelming? Maybe you just do not know where or how to get started.

Think back to when you started woodworking. At that time, you did not know how to properly use a table saw, drill press or a planer. What type of glue should you use, do you make a miter or a butt joint? These were all questions you had to research and guidance you had to seek. The CNC is no different, it is simply a new tool for you to use.

Below is a guide to help you get started. After you have followed the steps will you be ready to machine a three-dimensional model of the Eifel Tower? No, however, you will be able to machine a sign that says Eifel Tower, or whatever you wish it to say. Baby steps, you start out simple and work up to more complex projects.

There are three articles on the Guild website that will give you a good overview of the CNC operation. These can be accessed by going to

kcwg.org and clicking on the “Activities” banner. From the drop-down menu choose “Special Interest Groups” then choose the “CNC SIG” link. Within the introduction you will find links to three articles to help you get started.

You can download a free trial version of some of the software we use by going to Vectric.com and choosing the “V-Carve Pro” tab located under the “Free Trial” heading. (The program works on computers running Windows OS, I do not know if the Apple operating system will support the software.) After you install the software on your home computer you need to configure it for “Makerspace Client”. You can find the instructions for this in the second article mentioned above. This will allow you to work on a project at your convenience then bring the file into the Guild to generate the code necessary to control the CNC.

Now that you have the software, what do you do with it? What are all of the funny shaped icons for? Where do you even begin? The Vectric website has links to videos that will step you through the process of laying out and

designing several sample projects. Stay with a basic design, keep it simple and follow the examples in their videos.

YouTube is also a great resource, search for CNC and you will find countless individuals that can help you understand the design process and the software. One particular website that I have found to be of great benefit is marklindsaycnc.com. Mr. Lindsay has two series designed for the beginner. One is titled “Vectric for the Absolute Beginner”, a 50-part series where he steps you through the design process for various projects. He also has a new series designed just for understanding V-Carving.

Legacy Woodworking Machinery is the manufacturer of the CNCs at the Guild. They have a series of video tutorials on their website lwmcnc.com. Click on the heading “Training” then in

Continued on Page 8

Continued from page 7

the dropdown menu choose "Video Library". Once here choosing "Vectric CAD/CAM Basics" will give you access to 17 tutorials on the design software.

After you have completed your project design you will need to do several projects under the supervision of one of the CNC instructors. These projects will allow you to understand the safety considerations as well as the procedures for operation of the CNC machines.

There are currently three individuals at the Guild to help guide you as you explore the world of the CNC, Gary Mielke, Patrick Gleason and myself. We can all be contacted by sending an email to CNC@kcwg.org Attach your question with your contact information and one of us will respond to you.

Overwhelmed? Don't be. Step by step, start basic and work up to more complex designs. If you can imagine

it, the CNC may be just the tool you need.

The CNC SIG will be meeting Tuesday March 15 at 6:30pm. If you are interested you are invited to come and explore the possibilities. Please join us.



Ed Stewart
CNC SIG
Coordinator

FROM THE SHOP

Welcome our newest additions to the shop, We have added another 14" bandsaw to the herd. Adding this bandsaw will help reduce congestion especially during classes that have bandsaw operations. I think I may have heard rumors of a bandsaw box class in the offing.

Panelsaw is ready for use. The Safety Committee's Safety Video


division has produced a video on the Panelsaw. This video is a little different than their other safety videos. Along with pointing out all the safety features and concerns this video serves as a training video. Give it a view from the Safety Videos section of the website. A panelsaw is a great way to break down sheet goods with less awkward handling of the full size sheets.

A thanks to all of you that made the February meeting tool sale so successful. We sold a lot of stuff but there is still some left, check out the table at this month's meeting.

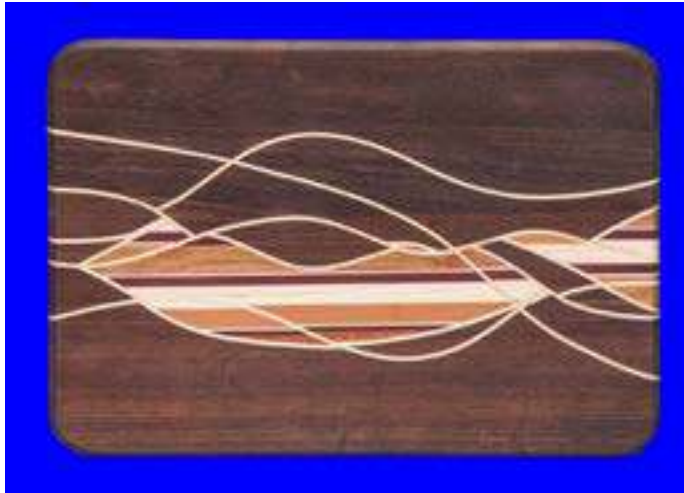


Chuck Saunders
Director of Assets

PLEASE SUPPORT OUR KCWG SPONSORS

COMPANY NAME	ADDRESS/WEBSITE/DESCRIPTION	KSWG DISCOUNT AMOUNT
 KATSURA	Katsura Cutlery Houston, TX katsuracutlery.com Knives, knife blanks and knife making instructions.	10% 15 - 20% on some sales items Identify KSWG membership on order

MEMBER PROJECTS



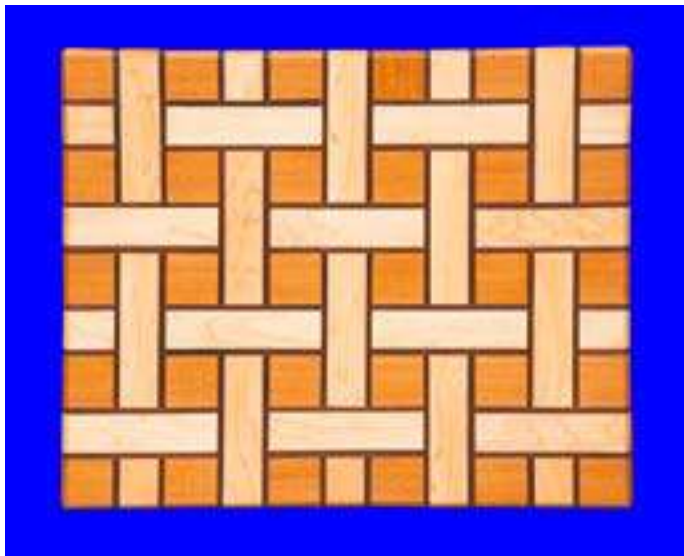
**Photos Courtesy
Neal Ray Shoger**



Jim Bany

Cutting Boards and Canisters

Materials: Walnut, Maple & Cherry

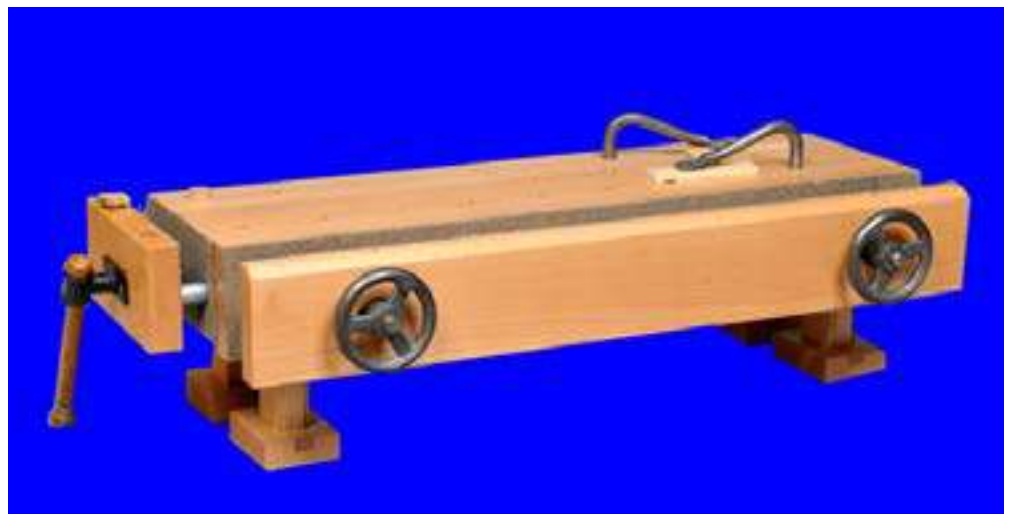


Roland Mohler

Bench on Bench

Materials: Beach

Finish: Paste Wax



HONORING VETERANS PROGRAM: FLAG CASES AND URNS

As part of our on-going effort to supply flag boxes and ash urns to the Kansas City Hospice and Palliative Care's "Honoring Veterans" program, we will be milling a White Oak log at L&K Hardwoods on Saturday, March 26th at 12:00 noon. Larry and



Cammy suggested we do a "Mill and Grill" at their place that day and then tackle the job of milling the White Oak log we acquired from the National Cemetery in Leavenworth, Kansas. Thanks to Steve Ericson and Ryan Lawn and Tree, we were able to get this log and Steve transported it out to L&K a couple of weeks ago. Larry and Cammy Smith, owners of L&K Hardwoods jumped at the opportunity to be part of this worthy project and offered to do the milling and the kiln-drying of the lumber. This log should net us roughly 150-200 board feet of white oak for our flag cases and ash urns we will be building for the KCH&PC Honoring Veterans program.

Larry offered to do the grilling and we (the members of KCWG) are tasked with bringing some sort of side dish and lots of muscle to do this milling. We are very excited to have this opportunity to get this material at no cost, and even more excited that L&K is inviting us all to participate in the processing

of this log. If you've never seen a band mill in operation, this is a great opportunity to be a witness to the process and also lend a helping hand. We will provide more detail in the coming weeks, so be on the lookout for more announcements. We will also post a map so everyone can find L&K for the event. If you have any questions, please email



Mike Jones at safety@kcfg.org to get more information. We will also have announcements going out to our membership in the coming weeks for a call to workers to assemble flag boxes and ash urns. We have a standing order from KCH&PC to



supply 5 flag boxes and 5 ash urns each month for as long as the Guild is willing to supply them. We currently have enough walnut to build 20 or more flag cases and we will be getting more walnut to start building ash urns.

More information will be coming your way soon.

Mike Jones
Director of Safety



KANSAS CITY WOODWORKERS' GUILD HAND TOOL SIG

MARCH 27, 2022 2PM TO 4 PM

This Sunday we continue work on a four meeting project, a candle box in Ejner Handberg's Shop Drawings of Shaker Furniture & Woodenware Vol II (page 65). This project is a good match for building hand tool skills. We started with 4/4 stock and used handsaws to cut free our parts. Then a jack plane and a jointer plane get the parts flat on one face. Scribe a few lines for a thickness of 1/2" and the work is quickly done.

With our fresh 1/2" thick material there are two more tasks before we start our dovetail. This March 27th, we will be finishing off the stock prep with a bit of precision cross-cutting, using the shooting board and finally making the pieces the right width. Once everything is ready we layout our dovetails! We will also take a few moments to review sharpening of chisels and planes this session.

We expect this project to take 3 more sessions, one at each of the next three Hand Tool SIG meetings. You are more than welcome to build along (you must have a "green card" for working in the shop) or just kibitzing and taking notes. Remember, ***the Hand Tool SIG is always free and open to members and guests.***



The second session, is Sunday, March 27th from

2pm to 4pm, will concern itself with completing our stock preparations and getting ready to cut our dovetails.

So please join us on **Sunday, from 2pm to 4pm** as we continue a project made solely with hand tools. Please note the Open Shop will end at 2pm



and resume at 4pm.

Notes for those that wish to participate in making a candle box:

Tools for this session include a carcass cross-cut saw, marking knife, woodworking square or combination square, a few chisels, 1/4" and 1/2" would be useful, along with a dovetail saw and a fine point mechanical pencil. A shooting board and suitable plane can be used to fine-tune our workpieces. The KCWG has examples of all these tools but feel free to bring your own.



Rob Young
Hand Tool SIG
Coordinator

COMPANY NAME	ADDRESS/WEBSITE/DESCRIPTION	KCWG DISCOUNT AMOUNT
	Rockler (Mahogany Sponsor) 15340 West 119th Street • Olathe, KS 763.478.8214 rockler.com/olathe-store	10% Show current membership card on order/payment-Some Restrictions May Apply
	Woodcraft (Mahogany Sponsor) 8645 Bluejacket Road • Lenexa, KS 913.599.2800 woodcraft.com/stores/kansascity Power tools and accessories, hand tools, fasteners, hardware, wood, finishes, clamps, workbenches, personal safety equipment and education.	10% Show current membership card on order/payment
	Taylor Toolworks (Mahogany Sponsor) Columbia, MO 573.397.6432 taytools.com Specialty hand tools, supplies and fixture and jig hardware.	10% INPUT coupon code KCWG10 to receive discount
	L&K Hardwoods (Mahogany Sponsor) 3101 N Lentz Road • Independence, MO 816.249.4400 landkhardwoods@gmail.com • landkhardwoods.com Custom milling, kiln drying, hardwood lumber, live edge slabs, and custom furniture.	10% Show current membership card on order/payment
	Walrus Oil (Cherry Sponsor) Springfield, MO 816.848.8598 • https://walrusoil.com/ Oil and wax finishes for cutting boards, furniture and leather and waterless skincare.	10% Identify KCWG membership on order Coupon Code: KCWG
	Lie-Nielsen Toolworks (Cherry Sponsor) Warren, ME 207.273.2520 lie-nielsen.com Hand tools, sharpening and tool care products, workbenches and education for woodworkers.	10% Offered only on purchases made at the annual guild tool show. Must show current membership card on order/payment at the guild

FROM THE TRAINING DESK

Some of you are probably aware that I will be taking over, as Training Director, for Norm Carpenter in April, after the elections. I have held many positions on the Leadership Committee in my 17 years as a member of the Kansas City Woodworkers' Guild. I started out as the Newsletter Editor before moving up to Communications Director. Then came the Vice-Presidential position, followed by a term as President, and then Member-At-Large. Through all that time the idea of learning and furthering my knowledge of our craft has been important to me. When I joined, the Guild, I was a fairly new woodworker. But with the shared knowledge and teaching from our more experienced members, I've been able to step up my game.

I've been involved with our Basic and Intermediate Woodworking classes for several years, now. It has been a wonderful experience for me to help new woodworkers find their way and improve their skills. It's rewarding when you see a person with very limited skills make their first project, a cutting board, and start to feel pride in what they have accomplished. Then they move on to next project, making a spice cabinet from a single thirty inch board, and the smiles start to get bigger. And then the last project, an Arts & Crafts inspired plant stand, they really beam with pride for the work they've done. This is the great part of teaching. It only gets better as they move on to Intermediate Woodworking. Each project from the Shaker side table with a drawer to the Shaker

hanging wall cabinet provides new challenges and new skills to learn. This is why these are our most popular classes.

Many of the instructors in these classes have been recruited from previous classes. Wes Meyer, who leads the Spice Cabinet section of the Basic Class, is a graduate of one of the first Basic classes. One of the best ways to learn is to teach thru repetition. So if you're taking the Basic Woodworking class, don't be surprised if I ask you to help out with the next class. It's a great way to share this wonderful craft that we love.



Kevin Thomas
Incoming
Training Director

DO YOU HAVE a Committee Meeting, SIG Team Meeting, Training Meeting or other meeting that you need to schedule?

HOLD YOUR MEETING ONLINE!

All that you need to do to set up your meeting is send a message to: communications@kcwg.org with the email addresses of the people you want to invite, the date and time of your meeting and we will set the meeting up for you.

THAT'S ALL THAT THERE IS TO IT!

SPECIAL BUY!
\$12⁴⁹ BD. FT.

**15/16" QUARTER
SAWN WHITE OAK**

SKU: 52375

IN-STORE ONLY



SPECIAL BUY!
\$7⁹⁹ BD. FT.

15/16" MAHOGANY SHORTS

In-store only

SKU: 51266

**DIMENSIONAL SIZES AVAILABLE
ONLINE STARTING AT \$7.99**



\$14⁹⁹

**ROCKLER 2-PIECE SANDING
BLOCK SET FOR 5"
HOOK-AND-LOOP DISCS**

- Perfect for detail sanding and hard-to-reach areas
- Comfortable knob and finger grips minimize fatigue
- Accepts standard 5" hook-and-loop discs

SKU: 88122



\$29⁹⁹

**ROCKLER QUICK-DRAW
MARKING GAUGE**

One quick motion lays down
a nice, bold pencil line

SKU: 55120

**ROCKLER SHOP PENCILS,
5-PACK** Reg. \$3.99 SKU: 62039



**SAVE
33%**

**HAVE YOU
SEEN THIS?**

\$9⁹⁹

**ROCKLER ROUND
CONTOUR
SANDING GRIPS**

Flexible rubber adapts
to minor variations in diameter

Reg. \$14.99 SKU: 54412



\$299⁹⁹

**A ROCKLER TRADITIONAL
HIGH-SPEED STEEL
ERGONOMIC TURNING
TOOL SET**

Perfect for turners who prefer to
sharpen their own tools

SKU: 67614

**B ROCKLER TRADITIONAL
TURNING TOOL HOLDER:**

Reg. \$19.99 SKU: 67161



POWER PLUS SALE PRICING VALID 3/4/2022 - 3/31/2022
15340 W 119th St. • Olathe, KS 66062 • (913) 815-2002 • Rockler.com
Please check Rockler.com for current store hours.



Kansas City Woodworkers' Guild's new Rabbit Laser Engraver

LASER ENGRAVER SIG

(MEETS 4th WEDNESDAY EACH MONTH, BEGINNING IN APRIL)

Before being allowed to operate the Laser Engraver you must complete the training offered by the Laser Engraver SIG.

As of the first of March, 45 members have been trained to operate the KCWG Laser

conducting trainings every Wednesday until the end of April. Sorry, but only those signed up on SignUp Genius can take the Laser Engraver trainings and all currently scheduled classes are full. More trainings will be offered after April 27th.

Any KCWG member, regardless of membership level, can be trained to operate the Laser Engraver, but as with all KCWG equipment, only Green Tag members can operate the Laser Engraver once trained.

All design work should be done with the Light Burn software that

is installed on the computers in the Guild library and transferred to the Laser computer via personal thumb drive.

The active foreman carries the Laser Engraver keys and will only

turn them over to a Green Tag member that has the Laser Engraver trained "rabbit" attached to their name tag.

Our current guidelines are that each member using the Laser Engraver; is limited to two-hours per day (*users will sign the logbook indicating what time*

they started), that only wood can be engraved in the KCWG Laser Engraver, and that each user must start and shut-down the Laser Engraver completely and keys must be returned to the active foreman. Currently key hand-offs are not allowed.

When operating the Laser Engraver, it must be attended the entire time. If user needs to step away, they must have someone "babysit" the Laser Engraver. Foremen have been instructed to turn-off the Laser if left unattended, remove the keys, and the users time is over for the day.

The Laser Engraver SIG will be sharing ideas and best practices so if a user finds a setting that works well with a particular wood or type of engraving, record those settings and we will share them when the SIG meets. Rabbit Laser USA only offers very generic settings for engraving or cutting. Our goal is to allow every Guild member that wants to try Laser Engraving the opportunity to do so and to enjoy the productions that can be made using this versatile tool.



Engraver with 48 more members scheduled to be trained before the end of April. Our first Laser Engraver SIG will be held at the Guild Shop on April 27th at 7:00 pm. Currently the Laser Engraver SIG co-leads, Mike McCauley and Curtis Alexander, are concentrating on and

Mike McCauley
Laser Engraver
SIG co-lead



MEMBER PROJECTS



Curtis Alexander

Laser Box

Materials: Baltic Birch

Finish:None

Challenges: Laser Software

**Photos Courtesy
Neal Ray Shoger**

Jim Martin

Meat Clever

Materials: Scrap Walnut Flooring

Finish:Knife Handle Oil

Points of Interest: was Grandma's

*Challenges: Tapered Shank and
Tang*



SPONSORSHIP NOTES

We would like to thank the following 2022 Sponsorship renewals:

L&K Hardwood – Mahogany Level
Rockler Woodworking & Hardware – Mahogany Level
Woodcraft of Kansas City – Mahogany Level
Lie-Nielson – Cherry Level
Bloomer Hardwoods – Pine Level

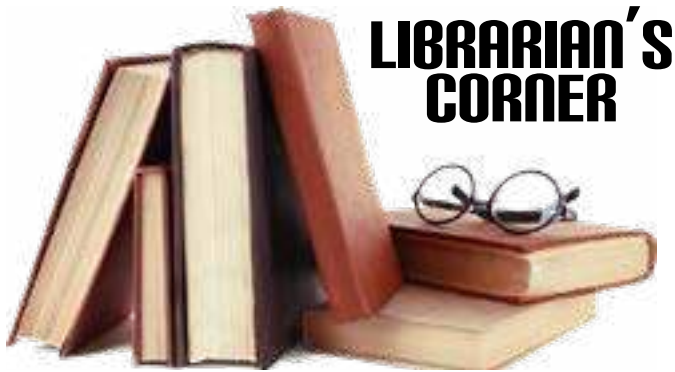
In addition to our sponsors identified by their logo throughout this newsletter, we would like to thank the following for their gifts:

Donation to Raffle Table – February

Jim McCord:
3 Boxes with sliding covers
 Anonymous:
Various items
 John Van Goethem:
Frame Clamp set



Duane Miller
 Director of Sponsorship



LIBRARIAN'S CORNER

The 2022 Membership drive is over and we have received the new membership file. The library patron file is extracted from the membership file and replaces the previous year patron file. This is a manual process and should be finished by the time you read this. You will need your membership number to check out a book. If you are not listed as a patron and want to check out a book or dvd, please send an email to librarian@kcwoodworkersguild.org -or- library@kcwg.org with your name, the email address you use with the Guild, and membership number. We will add you as a patron and notify you when that is done. If you have any questions, please email us.

You can use your web browser to view the library book catalog online by going to the Guild website (kcwg.org) home page and clicking “Resources” from the “About” tab dropdown menu. This will take you to the Library page and you can click “Visit the KCWG Library”. The

catalog can also be searched through the computer on the desk in the Library. See the icon on the desktop of the computer. The Guild computer is on the desk in front of the dvd storage case. The other computer belongs to the Turners. You can search the online catalog by Category, Author, Title, or Call Number.

There is a Library Checkout binder on the Library desk if you would prefer to use that instead of using the computer. Items that are returned should be placed in container on the desk marked “Returns” and we will take care of them. There is also a container for items to be reshelved.

The Guild Library has digital versions of woodworking magazines. These can be found on the Guild Library computer desktop Magazine Archive Icon. They are not available online. Physical copies are available in the Library.

If you have trouble getting a book checked out or any other Library issue please send an email to: librarian@kcwoodworkersguild.org -or- library@kcwg.org.



Don Steele
 KCWG Librarian

KC WOODWORKERS GUILD MEMBERS: WHO ARE WE?

Who are the Guild Members? Doctors, Truck Drivers, Engineers, Accountants, and people just like you and me.

What are common features amongst the membership? They enjoy the opportunities the Guild offers like camaraderie, making nice things from beautiful wood, sharing knowledge of the hands, helping others learn the joy of making and sharing a great location for all those activities.

What make the Guild continue to tick? The Guild is quite economical because the operation, the entire operation is 100% volunteer member activities.

Do you want to Guild to continue to prosper and grow? Then volunteer for a role in shaping the continuing evolvement of the Guild. Do Training videos interest you? Talk to the Train Director Norm or Kevin. Communication needs a volunteer leader!

Do you like the way the Guild Foreman assist new members develop confidence and capability? Safety needs a new director. Chuck always wants new qualified potential Foreman volunteers.

Communications and Safety have current committee members who would like to continue their background work but new Directors are needed for both committees.

If you contribute to the Guild operation by **volunteering**, you will gain personally. Please stop by, call, or email the **Nominating Committee Tim Locke or Mike McCauley or any LC member.**

Tim Locke
Member-at-Large



MARCH MEMBERSHIP MEETING PROGRAM

One of the many special interest groups that we have in the Guild is the Woodcarvers' SIG. Generally speaking, this has always been a challenge for me to get a wood-carving speaker for our monthly meeting; however, I finally have someone already very familiar with the Guild and who is also an accomplished Wood Carver. Dennis Bixby also teaches wood carving at the Woodcraft store and he participates in many competitions. I have known Dennis for many years also as a former Leavenworth County Commissioner. As far as I know, you can carve with hand-powered tools or with machine-powered tools and I'm pretty sure that Dennis uses mostly his hands to power his tools. Admittedly, both methods can be used to do

beautiful work. I did notice that Dennis teaches a class on carving a bust of a person and I'm hoping that I can get him to teach me how to do that, too. Dennis also provides a carving tool sharpening service, just in case you need to learn how to do that or if you just want to get all your tools sharpened. I'm looking forward to finally having a wood carver give a program and I hope to see you there on Wednesday.

Matthew Nowak
Director of Programs



COMPANY NAME	ADDRESS/WEBSITE/DESCRIPTION	KCWG DISCOUNT AMOUNT
 <p>Baird Brothers FINE HARDWOODS Our Family's Heritage Your Family's Home</p>	<p>Baird Brothers Fine Hardwoods (Cherry Sponsor) Canfield, OH 800.732.1697 • bairdbrothers.com</p> <p>Hardwood lumber and plywood, custom millwork, mouldings, interior doors, stair parts and tools.</p>	<p>10% Identify KCWG membership on order</p>
<p><i>Bloomer Hardwoods</i></p>	 <p>(Pine Sponsor) Phone: 816.330.3596 13585 45 Highway Platte City, MO 64079</p> <p>Hours: MON - FRI 8:30AM - 4:30PM</p>	
 <p>Stone's Sticks Stone Ductiniere, Owner Hardwood for crafting, DIY projects, outdoor and indoor firewood. Follow us on Facebook: Stone's Sticks</p> <p>417 N. Colvada Ave. 620.931.8679 Burrton, MO 64702 stonessticks2019@gmail.com</p>	<p>Stone's Sticks (Pine Sponsor) Burrton, KS 620.931.8679 stonessticks2019@gmail.com</p> <p>DIY hardwood craft supplies, lumber, trim, cooking wood and firewood.</p>	<p>10% Show current membership card on order/payment</p>
 <p>NEAL RAY'S PHOTOGRAPHY</p>	<p>Neal Ray's Photography 9 E Kansas Street • Liberty, MO 816.582.5968 nealraysphoto@gmail.com</p> <p>Photographic studio portraits.</p>	 <p>Official Photographer of the Kansas City Woodworkers' Guild</p>
<p>SUPERIOR GRINDING</p>	<p>Superior Grinding 5315 Raytown Road • Raytown, MO 816.561.8665 superiorgrindingllc.webstarts.com</p> <p>Sharpening tools used by professionals and homeowners.</p>	<p>10% Show current membership card on order/payment</p>
 <p>METRO HARDWOODS, INC.</p>	<p>Metro Hardwoods 4243 S Noland Road • Independence, MO 816.373.1710 metrohardwoodsinc.com</p> <p>Hardwood lumber, plywood, finishes, saw blades and bits.</p>	<p>10% Show current membership card on order/payment</p>

FROM THE MEMBERSHIP DESK

The annual membership renewal process closed on February 28, 2022. Moving forward all individuals joining the Guild will be considered New Members.

The renewal process was very successful and has resulted in our Guilds largest March Membership in our history.

Shown below is a table of the past six years of Membership Levels in March of each respective year and the count of members dropping out of the Guild. Membership churn is shown as a % of the total member count for the year.

	2022	2021	2020	2019	2018	2017
Member Count	801	733	757	766	742	684
Annual Non-Renew	202	208	252	222	207	206
Annual Membership Churn	20.1%	22.1%	25.0%	22.5%	21.8%	23.1%

The data suggests that we “lose” about 22.5% of the membership each year, but that annually new members joining the Guild offsets most of the non-renewing activity.

Thanks to all renewing and new members for your support of the Guild.

The Membership Wall will be rearranged (alphabetical) prior to our March 16th meeting adding all the new members from the past year. If you don't see your card in its usual spot ... please look just a bit harder.

Jim Berard
Director of Membership



WOODWORDS: THE PODCAST

After a bit of a delay starting the new season of the podcast, Chris and I are ready to get back at it. We have a few guests lined up and maybe some surprises in the near future. We'll be getting back to it with current Member at Large, Tim Locke. Tim has been involved with Guild Leadership for quite a while and since he is going to be retiring from his post in April, we felt it was time to catch up with him.

Coming up next will be an interview with representatives from Kansas City Hospice and Palliative Care, along with Mike Jones and Mike McCauley, as we discuss their Veterans program and how the Guild is helping out.

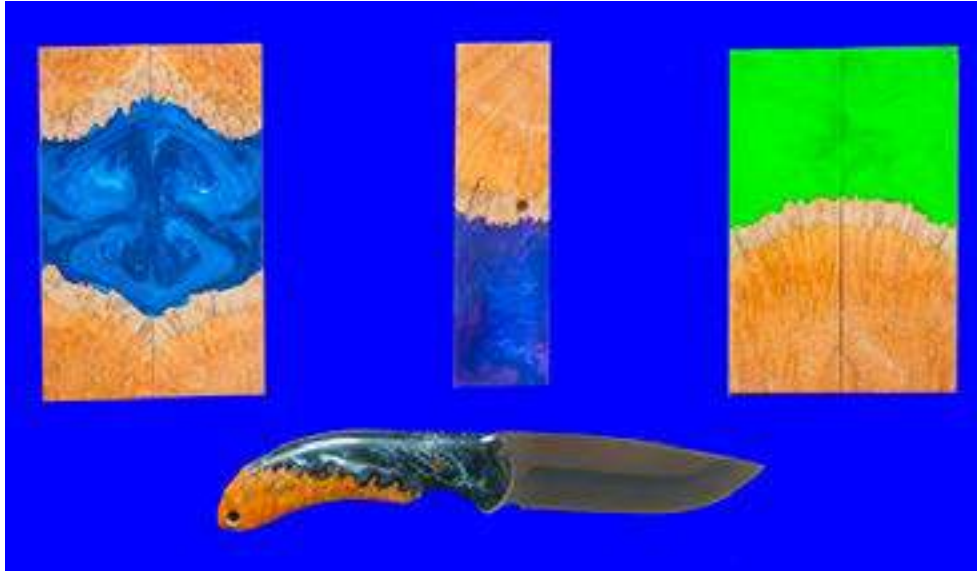
Next, we'll be checking in with David Roth and Tom Smoller. Both are very talented woodworkers, whose pieces will amaze and astound. David is our resident Intarsia master along with some absolutely beautiful Marquetry. Tom has made some outstanding period furniture reproductions that are near flawless. And like I said, we may have a few surprises for you along the way.

So, as always, remember to like, share, and subscribe wherever you get your podcast. And always work safe and get your sawdust on.

Kevin Thomas
Future Training Director



MEMBER PROJECTS



David Roth

**Photos Courtesy
Neal Ray Shoger**

David Roth




COMMUNICATIONS COMMITTEE UPDATE

It's seems like we just celebrated the new year, but it's already March. Communications is working hard on planned improvements that have been in the pipeline for a while and reacting to necessary changes that need to be made just to keep things moving along.

Our internal network has had some issues. A few months ago, we discovered that our wireless network was hosting users that were not on our premises. While we are 'pretty' sure that it wasn't an intentional hack, we suspect that people in adjacent companies had connected into our network, probably without realizing it. To make sure that this doesn't turn into a major issue down the road, we've decided to make some improvements to our wired network and strengthen the security of our wireless network access. We are going to begin to install a mesh wireless network which should eliminate some of the dead spots in our shop and also to improve access issues that are experienced in the turners shop. We hope to have this project completed within the next few months. After that time, to get wireless internet while you are in the shop will require that you input a new ssid and password the first time that you are wanting to access the internet while you are at the shop. Once you've set up and connected using the new ssid and password future visits to the shop will automatically connect to the internet.

We've also been working on a digital sign-in that



w i l l
be used when
you sign into open
shop. This is going
to be setup to scan the back of your name tag and
require a simple multiple choice question to record
why you are in the shop. This will allow us to better
determine shop utilization and identify areas where
we may need to make improvements

You've probably already noticed that we've made a few changes to the newsletter format this month. While it's nothing major, it serves to freshen up the look of the newsletter a bit. As is in past issues, any print shown in blue are interactive. This means that you can click on the blue type and it will take you to the subject described in blue. Every member of the Board of Directors, the Leadership Committee and the Coordinators of each of the Special Interest Groups are asked to contribute articles each month to the newsletter. Don't see something from your favorite area of interest, feel free to get after the person responsible or consider putting together an article yourself.

The Guild is also looking for someone to take over the reigns of the Communications Committee. Over the past several years Communications have made many changes to the guild's communication needs. Our committee is established and current

Continued on Page 23

Continued from page 22

department chairs have agreed to remain in their current jobs. Don Steele is remaining as Librarian and Mark Crowley is firmly entrenched as guild Webmaster. I have found both of these gentlemen to be easy to work with and they both do an excellent job managing their areas of responsibility. All other committee members have also been responsive to helping out wherever needed when asked. Stepping into the Director's job should be painless for any candidate who steps forward. We are also seeking

someone who would be interested in stepping in as the Assistant Director of Communications. Mark Crowley would like to pass this responsibility to someone seeking to enter the *wide and wonderful world of guild communications.*

Ron Haw
Director of
Communications
& Newsletter Editor



SAFETY THOUGHTS AND COMMENTS

It is hard to believe it is already March and we are rapidly approaching that time when we elect a few new officers for the guild. Since the position of safety director is one of those positions being voted on, I wanted to take this opportunity to make a plea to our membership to consider this position and others that will be on the ballot. I want to put my plea in perspective, so please bear with me.

Many of you know that I have been involved with the KCWG for more than 25 years. In that time, I have been membership director, sponsorship director, training director, vice president, and president. In fact, over those 25+ years of involvement, I have been involved in leadership of our guild in one position or another. In those 25+ years, we have seen our membership grow from a mere 75 members to where we are today, somewhere in the 950+/- range. I bring this up because it needs to be stated that the larger we grow, the more there is needed to keep this machine running. Some of us have given way more of our time to keep the guild running than others. As I man the shop as a foreman, I am continually amazed at the number of new faces I see coming into the shop. It wasn't that many years ago that I knew pretty much every person who was a member. Not so today. I try, as best I can, to remember names, but it is almost impossible to remember all of your names. I apologize if I have met you and forgot your name, but that is why we have nametags, I guess. Thank

goodness for those nametags!

My point in all of this reminiscing is that I (and many others in leadership) have paid our dues (literally) and it is time for some of you newbies to step up and into leadership roles. My position as director of safety is one position that will be up for election. I need to step away from leadership for a couple years, and this position needs a director. We have a good group of members on the safety committee and much of the heavy lifting has already been completed. We have one of the most comprehensive safety programs of any community shop in the country. There are always things to be done that will make it better, and we need someone who can take us into the next phase of our safety program development and management. Won't you please consider throwing your hat in the ring? We need people with drive and a vision to the future of the guild. Please consider being a candidate for safety director or one of the other positions we need to fill.

Until the next time, I'll see you in the shop.
Be safe!

Mike Jones
Director of Safety



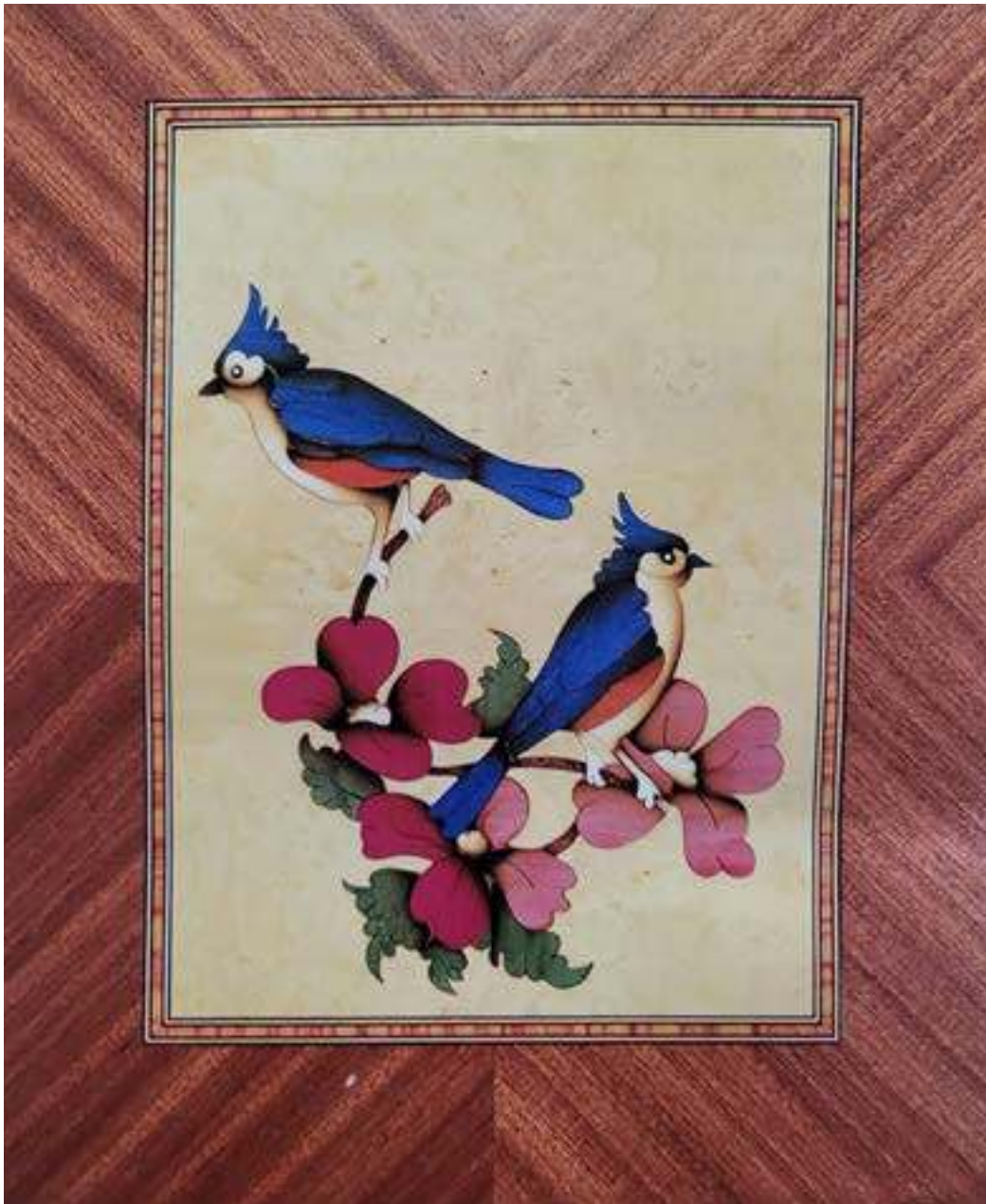
COMPANY NAME	ADDRESS/WEBSITE/DESCRIPTION	KCWG DISCOUNT AMOUNT
 <p>Schutte LUMBER CO. Since 1880</p>	<p>Schutte Lumber Company 3001 Southwest Blvd. • Kansas City, MO 816.753.6262 • schuttelumber.com Timbers, cedar, siding and pattern profiles, specialty hardwoods, treated lumber, Festool power tools, decking, fasteners and hangars.</p>	<p>10% Show current membership card on order/payment</p>
   <p>Phillips Safety Products, Inc.</p>	<p>Phillips Safety Company Middlesex, NJ 888.245.6638</p> <p>Three websites to serve KCWG members, each offering a 25% member discount (Use code KCWG25)</p> <p>rx-safety.com - Prescription safety glasses, reading and magnifying glasses, hearing protection</p> <p>myeyewear2go.com - Eyeglasses, sunglasses, prescription sunglasses, sports and specialty glasses</p> <p>phillips-safety.com - Laser safety glasses, welding and IR safety glasses, radiation protection, glassworking eyewear</p>	<p>25% INPUT coupon code KCWG25 to receive discount</p>
 <p>Gain the Paxton Advantage!</p>	<p>Frank Paxton Lumber Co. 6311 St John Avenue • Kansas City, MO 816.920.5251 paxtonwood.com Hardwood lumber and plywood, panels, molding, acrylic and decorative surfaces.</p>	<p>10% Show current membership card on order/payment</p>
	<p>Lee Valley Reno, NV 888.983.1865 Leevalley.com Hand tools, power tools, hardware and accessories.</p>	<p>15% educational Application form available at Guild</p>
	<p>Liberty Hardwoods 3900 N Kentucky Avenue • Kansas City, MO 816.231.0852 libertyhardwoodsinc.com Hardwood lumber, plywood, trim, hardware and accessories.</p>	<p>10% Show current membership card on order/payment</p>
 <p>You shop. Amazon gives.</p>	<p>Amazon Smile smile.amazon.com On-line power equipment, tools accessories, etc.</p>	<p>No Guild discounts. However, a percentage of all sales are given to the Guild</p>

MEMBER DAVID ROTH TAKES HOME THIRD PLACE IN THE AMERICAN MARQUETARIN BIRD CONTEST

David Roth recently entered the American Marquetarin Bird Contest and was awarded 3rd place.

Third Prize - Titled: Pair of Resting Tufted Titmice Sitting on Pink Dogwood Tree Branch by David Roth

David has been doing marquetry for 16 years. The picture is 13" by 10". The picture was cut with a scroll saw and finished with enduro varnish. The inspiration was in a picture book and it was envisioned using Laurel Burl, homemade dyed veneers, and tulip wood fillet banding with a sapele diamond border. The neatness and simplicity of the design is highlighted by the use of sand shading on every piece.



CHECK OUT TAYLOR TOOLWORKS FOR ALL OF YOUR FAVORITE BRANDS



TAYLOR TOOLWORKS GUILD PARTNERS PROGRAM

PLEASE WELCOME THESE 26 NEW MEMBERS WHO JOINED THE GUILD IN FEBRUARY & EARLY MARCH

<u>FIRST NAME.....LAST NAME</u>	<u>HOMETOWN</u>	<u>STATE</u>	<u>MEMBERSHIP</u>	<u>JOINED</u>
Steven R..... Martin	Excesior Springs	MO	WW+.....	2/5/2022
John..... Carter	Lenexa	KS	Sawdust	2/6/2022
Matthew	Forbes.....Brookfield.....	MO	WW+.....	2/7/2022
Kevin..... McDaniel	Lenexa.....	KS	WW+.....	2/7/2022
Nathan..... Deal	Overland Park.....	KS	Sawdust	2/8/2022
Jason..... Howard	Raytown.....	MO	Sawdust	2/8/2022
Jay..... Sonderup.....	Independence.....	MO	Sawdust	2/8/2022
Kyle..... Folsom.....	Lenexa.....	KS	Sawdust	2/10/2022
Steve..... Marriott.....	Smithville.....	MO	Senior	2/11/2022
Prasad..... Bandari.....	Olathe.....	KS	WW+.....	2/14/2022
Malcolm..... Carey	Kansas City.....	MO	Sawdust	2/14/2022
Christopher Whitmore	Lenexa.....	KS	Sawdust	2/16/2022
Anthony..... Moon	Lenexa.....	KS	WW+.....	2/18/2022
Mark..... Larrabee	Kansas City.....	MO	WW+.....	2/20/2022
Mike..... Blake	Fairway	KS	Sawdust	2/21/2022
Jonathan..... Green.....	Kansas City.....	MO	Sawdust	2/21/2022
Robert..... Winter	Overland Park.....	KS	WW+.....	2/21/2022
Marc..... Turner.....	Leawood	KS	Sawdust	2/22/2022
Lamoyne..... Dungan	Saint Joseph.....	MO	Sawdust	2/26/2022
William..... Evans	Raytown.....	MO	Sawdust	2/26/2022
Magdalene..... Pattantys	Kansas City.....	MO	Sawdust	2/26/2022
Bob..... Maxwell.....	Kansas City.....	MO	WW+.....	2/27/2022
Eric..... Van Buskirk	Shawnee.....	KS	Sawdust	2/27/2022
Kerry..... Jordan.....	Olathe.....	KS	WW+.....	2/28/2022
Alex..... Moseley	Liberty.....	MO	Sawdust	3/1/2022
Aaron..... Shinn	Kansas City.....	MO	Sawdust	3/4/2022

03/07/2022 - Current Membership: 807

MARCH MACHINE SAFETY REVIEW

Scroll Saw

A scroll saw is useful for cutting intricate curves. Scroll saws use thin, narrow saw blades similar to those used by coping saws and operate through a quick reciprocating up and down motion.



Safety Rules

1. Make sure your scroll saw is firmly secured to the stand, tabletop, workbench, or cabinet.
2. Insert the blade with the teeth pointing forward and down toward the table.
3. Maintain the proper blade tension.
4. Clear the table of everything but your workpiece and make sure all adjustment handles are locked before starting the machine.
5. Never reach under the table while the machine is running.
6. Support a large workpiece to avoid pinching and perhaps breaking the blade.
7. Adjust the saw's hold-down foot so that it presses lightly on the workpiece. Reset the hold-down for each new operation.
8. Hold the work firmly against the table.
9. The KCWG shop has variable-speed scroll saws; use the proper speed for the job and type of stock you are cutting.
10. Make relief cuts before cutting long or sharp curves.
11. Cut only workpieces that have flat bottoms that can rest on the table.
12. Do not cut a workpiece that is too small to be held and supported safely.
13. If your blade gets stuck, turn the machine off before backing out of the cut.
14. Use a "V" block to cut cylindrical stock.

**GUILD
ACTIVITIES
AT THE SHOP:**

Always check the guild website before leaving home to be sure that a scheduled event is actually taking place.

There will also be times when the shop will be closed to open shop periods due to a special meeting, class or event. These closures will be clearly noted on the monthly open shop schedule and are typically highlighted by a color other than the green background that normally indicates an open shop period.

**BOARD, LEADERSHIP COMMITTEE
& GENERAL COMMITTEE DIRECTORY**

President.....	Craig Arnold	president@kcwg.org
Vice-President	Cal Hobbs	vicepresident@kcwg.org
Secretary	Mike McCauley	secretary@kcwg.org
Treasurer	Gary Mielke	treasurer@kcwg.org
Member-at-Large	Tim Locke	memberatlarge@kcwg.org
Director of Assets.....	Chuck Saunders.....	assets@kcwg.org
Communications - Questions, comments & suggestions.....		teamcomms@kcwg.org
Director of Communications..	Ron Haw	communications@kcwg.org
Asst Dir of Communications .	Mark Crowley	communications@kcwg.org
Director of Events.....	Chris McCauley	events@kcwg.org
Library - Questions, comments & suggestions.....		teamlibrary@kcwg.org
Librarian.....	Don Steele	library@kcwg.org
Newsletter Editor	Ron Haw	newsletter@kcwg.org
Director of Membership.....	Jim Berard.....	membership@kcwg.org
Director of Programs.....	Matt Nowak.....	programs@kcwg.org
Director of Safety.....	Mike Jones	safety@kcwg.org
Director of Sponsorship.....	Duane Miller	sponsorship@kcwg.org
Director of Training	Norm Carpenter.....	training@kcwg.org
Asst Director of Training	Brent Murphy.....	assttraining@kcwg.org
Videos - Questions, comments & suggestions.....		teamvideo@kcwg.org
Website - Questions, comments & suggestions		teamweb@kcwg.org
Web Master	Mark Crowley	webmaster@kcwg.org

ESSENTIAL LINKS & SERVICES

Kansas City Woodworkers Guild Website	https://kcwg.org
KCWG CNC Special Interest Group	cnc@kcwg.org
Guild Training and Available Classes	http://kcwg.org/classes/
Members Only Section (Password Rqd).....	http://kcwg.org/member-only-area/
Guild Photo Bank and Upload Center	https://member.kcwg.org/photo-submission/
Place a Classified Ad.....	classifieds@kcwg.org
GUILD Online Auction Page.....	https://member.kcwg.org/auctions/
KCWG Facebook Page	https://www.facebook.com/kcwgw
KCWG Videos	https://kcwg.org/videos

VISIT
THE KANSAS CITY
WOODWORKERS GUILD
ONLINE AT
www.kcwg.org

