

# WOOD WORDS

## FEATURED THIS MONTH

Wayne Delya Receives Award.....	3
Interesting Videos.....	5
Nominating Committee News .....	6
About the CNC Upgrade .....	13
March Open Shop Schedule.....	18
March Skill Builder FOLLOW UP..	20



Kansas City Woodworkers' Guild

PUBLISHED BY THE KANSAS CITY WOODWORKERS GUILD \* 3189 MERCIER ST \* KANSAS CITY \* MO \* 64111

## SAFETY COMMITTEE LOOKING FOR HELP

As many of you know, our Safety Committee has worked tirelessly over the last couple of years, to draft a comprehensive safety manual. Many of our new members don't realize how much work has been done. Under John Sloss's leadership, the committee has drafted a program that is being copied all over the country. Kudos to the Safety team.

What I need for our newer members to take note of is the fact that we are an all-volunteer organization. Without volunteers, we can't get things accomplished. That is why I am putting out the call to all members, new and old, to consider getting involved. The Safety Committee is needing new, fresh ideas. Several of our committee members can't stay involved due to a variety of reasons. If you have considered getting involved in the guild, the safety committee is a great place to get involved. We meet every other month on the second Tuesday of the month. While much of the heavy lifting has been done already, we still have a steady flow of needs in the safety committee. Please consider getting involved in our Safety program.

YOUR Guild needs you!

On other topics: As I walk around the shop as a foreman or am working on my own projects, I keep an eye out for safe behavior. With all the new members joining, we occasionally see someone who needs a little guidance, but for the most part, everyone seems to be very focused on using safe methods in their woodworking.

One thing that I have noticed and wanted to mention was the use of the horizontal edge sanders. The first thing I notice is the holes that appear in the belt on the 6" sander. These holes had to have been made applying too much pressure on the belt. The bigger safety concern here is if you push too hard on one end of your piece and not the other, your work will likely catch and that belt will jerk your work right out of your hand. I can assure you, those sanding belts can remove skin and fingernails much more quickly than wood. Don't get complacent when using the horizontal edge sanders or the sanding disc. It is also good to remind you that more pressure on the piece you are sanding is not going to make it

Continued on Next Page (2)

Continued from Previous Page (1)

disappear quicker. The more pressure you apply, the more heat is generated by the friction, and that will clog the belt and wear it out much quicker. A very light touch will do the job and allow you greater control of your work-piece. Control is the key here. If you don't have control of your work-piece, you have a greater risk of introducing your fingers, hands and knuckles to the abrasive quality of those belts. Having removed a

little skin on those belts myself, I can attest, those types of injuries really hurt and take a while to heal. Use those sanders with caution and respect. You won't regret it. Be safe out there!

**Mike Jones**  
Director of Safety



## 2019 SPONSORSHIPS ARE GROWING

Welcome back to Urban Lumber. They renewed their Pine Level sponsorship for 2019. And, please meet two first time, new sponsors - Baird Brothers Fine Hardwoods and Precision Elements.



**Urban Lumber** applies the mantra "reuse, recycle, reduce" – every time they saw a log. They make the most of our local natural resources, specifically Kansas City neighborhood trees.

Since 2005 Urban Lumber has been taking trees that are discarded as waste and sawing them into usable lumber. As of February, they have turned waste trees into over 600 tons of usable lumber. Check them out at <http://urbanlumberco.com/>

**Baird Brothers Fine Hardwoods** joined us for their first sponsorship in 2019 at the Cherry Level. They are based in Canton, Ohio specializing in high quality hardwoods. Baird has a



great online set up making ordering and delivery easy.

Baird was started by 3 brothers in 1960 and continues today as a family owned and operated business. Baird supplies S4S hardwoods, dowel rod and just about every imaginable hardwood moulding. They also supply interior hardwood doors and flooring and much more.

Check out their web site at <https://www.bairdbrothers.com/> Baird probably has the materials you need for your next project.

**Precision Elements** joined as a first time sponsor in February 2019 at the Pine Level.



Check out their projects at: <https://www.precisionelements.com/>.

While some sponsors offer discounts or other incentives to KCWG members, others do not. Be sure to identify yourself as a KCWG member and ask about deals our sponsors may be offering at the time you are considering purchases from them.

**Denny Walton**  
Director of Sponsorship

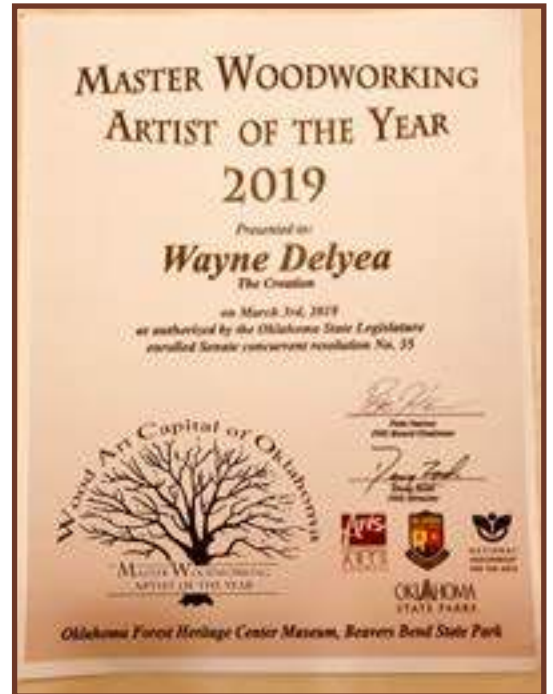


# WAYNE DELYEA NAMED 2019 MASTER WOODWORKING ARTIST OF THE YEAR

On March 5, 2019 I won the “2019 Master Woodworking Artist of the Year” award in the Oklahoma Forest Heritage Center and Museum at Beavers Bend State Park.

My piece is called “The Creation Desk”. It is my own design, a Black Walnut standing desk featuring a Marquetry of Michelangelo’s “Gods Creation of Adam”.

The inside features small drawers with hand cut dovetails and Ebony pulls. The Veneers include Curley Pecky Maple, Wenge, Ebony, Pear Wood, Aspen, Maple, and a few others I can’t remember right now.





# Rough to Ready

## A Basic Hands-on Introduction to Woodworking

This class instructs you in the basic techniques and provides the hands-on experience of using table saws, router table, jointer, planer, bandsaw, wide belt sander, miter saw, some good ol' sandpaper as well as various squares and measuring tools. It serves as the only alternative method to satisfy the KCWG'S safety requirements and earn the required Safety Certification necessary to work in the Guild's shops.

This is the perfect one-on-one or one-on-two class for beginners, novices, even as a refresher for experienced woodworkers to build a 9in x 5in x 3 1/2in lidded box with an experienced instructor. Beginning with rough cut lumber your class will progress step by step to create a lidded box, glued up and ready to take home and apply finish after only minor sanding.



All that's required to take the Rough to Ready class is a paid up Sawdust Maker, Woodworker Plus or Benefactor Membership, a completed and passed Online Safety Test (90% passing grade) and your paid tuition for the class. Sign up is simple, just follow this link: <https://www.signupgenius.com/go/20f0b4ca4ac2ea4fb6-rough>.

We currently have Rough to Ready class openings on a first-come-first-served basis at the following link: <https://www.signupgenius.com/go/20f0b4ca4ac2ea4fb6-rough> Classes fill up fast and you won't want to miss out.

## THE MARCH 2019 INTERESTING VIDEOS....

YouTube and other video sites are great resources for woodworkers, here are a few presented in no particular order. Each of these videos caught my or other's eye for various particular reasons, be it the education, the project, or the film itself. If you run across interesting videos, please send a link to me at [Library@kcwoodworkersguild.org](mailto:Library@kcwoodworkersguild.org)

Did you know that the Guild has a YouTube channel? The videos below will be on a playlist for ease of watching. Take a look! <https://www.youtube.com/user/kcwoodworkers/>

Enjoy!

### **Mini Cyclone Dust Collector for a Shop Vac** (5 Minutes)

<https://www.youtube.com/watch?v=iqHYwVWR2eA>

Willy puts together a mini-cyclone dust collection box that rolls about on salvaged wheels. An interesting different take on the mini-cyclone that's especially suited for medium sized shops. Leave the vac in the corner and wheel the cyclone to your work.

### **DIY Outdoor Side Table with Concrete Top**

<https://www.youtube.com/watch?v=gOz4eFJdWkI>

Fix This Build That builds a pair of outdoor side tables from cedar 2x4's and concrete. With the sudden spring weather (oh how quick it disappeared), sitting outside sounded nice... Which means outside furniture. They do a good job explaining how to mix and form concrete for a hobbyist for smaller projects. You could also use clay tiles instead. The table is simple, yet elegant. They also have a playlist of other patio furniture that they've built.

### **The Shaker Dresser** (20 Minutes)

<https://www.youtube.com/watch?v=YrzYQIT-dUE>

Will builds a Shaker Dresser. I'm honestly not sure how to describe this video. It's not exactly a how-to video but it's not an overview. He does really good job filming himself making a full sized shaker dresser from rough stock to finishing with minimal fuss and excellent voice-over work. His explanations of what he's doing are spot on and his techniques are clear. Give it a watch. You'll see what I mean.

### **IKEA Hacking: Upcycling a Drawer Unit**

<https://www.youtube.com/watch?v=VfjN6z3kVRM>

Switch & Lever takes a 180 from the previous Shaker Dresser video. Sometimes it just makes sense to repurpose a store bought unit instead of building it yourself. He refurbishes a drawer unit from Ikea and discusses simpler finishing techniques. Quote of the episode: "Don't fret if your arms start hurting, pain builds character. Plywood dust, however, slowly kills your lungs. So do wear a dust mask"



**By Andrew Carr**  
*Librarian*

## SKILL BUILDER CLINIC - APRIL 6, 2019 HAND PLANES, CARE AND ADJUSTMENT

Mike McCauley  
Assistant Training Director

Instructors/Clinicians: Rob Young & Andrew Carr  
Class Day / Date / Time: Saturday, April 6th; 2:00-4:00 pm  
Class Size: As many as can fit around the desk/bench  
Fee: Fee? NO Fee!  
Location: KCWG Shop; 3189 Mercier St, Kansas City, MO 64111  
NO Sign Ups, Just Show Ups  
Green Tag?: NOT required - NO Green Tag!

Description: Rob & Andrew will demonstrate and discuss the care and proper adjustment of hand planes, as well as which hand plane to use for a specific function. This is a great Skill Builder for the “experienced” woodworker as well as the “novice.”



Don't miss this opportunity to improve your woodworking skills with hand planes.

## KANSAS CITY WOODWORKERS GUILD NOMINATING COMMITTEE

The Kansas City Woodworkers Guild has a nominating Committee made up of Chris McCauley and Mark Crowley. The Guild is seeking Members interested in contributing to the Guild management through participation in the Leadership Committee and Board of Directors. Assistant's to Leadership Positions are also needed. New Board members and Leadership Committee Directors will be elected in the

April Meeting.

The following Positions are up for election:

Board of Directors:

- Treasurer
- Secretary

Leadership Committee:

- Assets Director
- Events Director
- Program Director
- Sponsorship Director

If you would like to consider contributing time and effort into directing the future of the Kansas City Woodworkers Guild Please contact the Nominating Committee

Mark Crowley

[mrkcrwly@gmail.com](mailto:mrkcrwly@gmail.com)

Chris McCauley

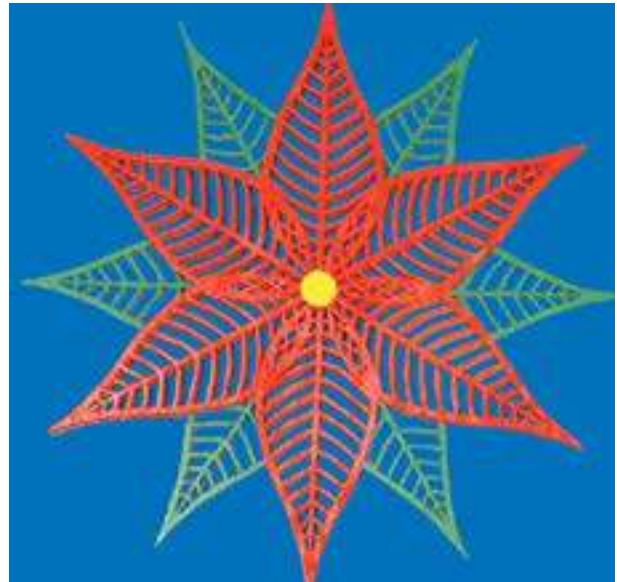
[mcphotokc@gmail.com](mailto:mcphotokc@gmail.com)

Tim Locke

[MemberAtLarge@](mailto:MemberAtLarge@kcwoodworkersguild.org)

[kcwoodworkersguild.org](http://kcwoodworkersguild.org)

## MEMBER PROJECTS



**Bill Kuhlmann** · Project Name: *Pentagram* · Material: *1/4" Maple* · Finish: *Paint*



**Photos Courtesy  
Neal Ray Shoger**

**Tom Smoller**

**Project Name:** *Silverware Chest*

**Materials:** *Cherry*

**Finish:** *Shellac & Wax*

**Challenges:** *Felt Inside*



## MARCH SAFETY REVIEW

# Belt and Disk Sanders

These sanders are for surface or edge sanding of nonmetallic materials only. They may be used for many types of rough end-grain sanding and simple shaping.



### Safety Rules

1. Power driven sanders can cause serious abrasive skin burns from accidental contact with the abrasive. Failure to keep your hands safely away from the abrasive may cause injury to the fingers and hands.
2. Before turning on the machine, check to make sure the sanding belt or disk is undamaged. Remove scrap pieces and other objects from the table, backstop and belt.
3. When you start a belt sander, make sure the belt tracks properly before beginning your sanding operation.
4. Keep the gap between the sander's table and the moving disk or belt as small as possible.
5. Be careful not to let the wood overheat. Sanding friction may burn the wood and damage or even destroy a belt.
6. Hold the workpiece firmly when sanding, and support the workpiece with the backstop or table or both. If your workpiece is too small to be safely supported, hold it in an appropriate jig or clamp.
7. Avoid awkward hand positions where a sudden slip could cause a hand to move into the sanding belt or disk.
8. When using a disk sander, hold the work firmly on the side of the table where the disk is rotating downward.
9. Do not push hard against the sanding medium. The sander performs best and most safely when it is allowed to remove material at a moderate rate.



## DON'T FEAR THE WAIT LIST

I am occasionally stopped at the Guild Shop by people who want to talk training. I appreciate hearing from people the types of classes that they would like to take, what they are getting from the class, and the occasional comment on class issues that could have been better. It takes a lot of work to find the instructors, determine a fair cost for the class, review the course outline, schedule the facility, publish and promote the class, monitor student activity, ensure payments are made, procure materials, sometime host and support visiting instructors, and deal with the last minute changes. It is those last minute changes that we should consider.

One of the comments I receive most often from students is that they wanted to take a class, but the time that they got to the sign up page it was full. This happens

for a lot of classes. Some classes can be filled up in a day, some take less than 30 minutes to fill. It all depends on the topic and the instructor. But a lot of people go to a class and see it is full and then leave disappointed. There may be nobody on the wait list, and they miss the chance to actually take the class.

Plans change for people. Other events come up, finances can become an issue, there are any number of reasons that a person ends up not being able to take a class. Mike McCauley and I keep up with the classes and the students and manage the changes to the roster. We contact the next person on the waitlist and give them first option to take the class. If we don't hear from that person right away, we move on down the list until we once again fill the class. So no matter where you are on the wait list, you may still have

a good chance to get into the class. Also, on certain highly popular repeat classes, at the request of the instructor, we will seek out the people who were on the waitlist for the previous class and give them a chance to sign up for the class before it goes to the general public. We can't do it for every class because it often takes a lot of extra time, but it can happen.

I hope that this encourages you to go ahead and sign up for a class waitlist. Good luck to you and I wish you great success in your woodworking education.

Until next time, keep the sawdust flying,

**Norm  
Carpenter**  
Director of  
Training



## SHOP HELP • GOT A MINUTE, HELP A BROTHER OUT?

You have no doubt noticed that there is a change between the Meeting arrangement and the Open Shop Arrangement. There are many who hang around after the General Meeting and, after the chairs are up, help return the shop to woodworking condition. Unfortunately there are other times where the number of helpers are less. Sometimes consisting solely of the Shop

Foreman. Of course all Shop Foremen are heroic figures suitable for a Marvel Comics movie lead but remember, they are disguised as their alter egos. They could use a hand if you're in the area. The times to look for are:

- 2nd Monday 4:30 before Turners meeting
- Tuesday morning 9:00 following the Turners meeting
- 3rd Wednesday 12:30 before

the General meeting

If you are at the shop at these times, finish your work a little early and lend the Foreman a hand. I know they will appreciate the assistance.

Thanks  
Chuck  
Saunders  
Director of  
Assets



## FINANCIAL UPDATE

February marks the end of membership renewal. Since membership dues makes up the largest portion of the Guild's operating revenue it is also usually the high point for net worth for the year. From now until November we start using some of the funds that are in savings to pay for expenses. The renewal period was successful, and we raised more revenue than projected and we are on our way to another great year.

Last month the Guild purchased a new SawStop and shelving for the wood storage area in the back. The shelving will increase the number of storage spaces and add to the storage revenue. The table saw was a floor model that we were able to purchase at a discount. The saw that is being replaced will be sold

and that will reduce the net cost of the new saw.

Training revenue for the first two months is above projection, which is an indication that the classes being offered are of value to the membership.

As a reminder the Statement of Operation for each month is on the website in the "Members Only" area under "Monthly Financial Statements". Please review the statements and don't hesitate to ask questions or make recommendations.

**Gary  
Mielke**  
Treasurer



## MEMBERSHIP – MARCH 2019 NEWSLETTER

With all the renewals and new members counted – we now have a total membership of approximately 775 so far in 2019.

The membership tag wall has been rearranged. This means everyone will have a new name tag spot on the wall. Get to the meeting a little early so you have plenty of time to locate your name tag!!

## MARCH MEETING PROGRAM

Thank you to Chris McCauley for making this contact and for providing the following information: Rick LaFaver is an avid woodworker who also created a YouTube series called WoodWorkLIFE, which he developed in 2016. According to Chris, Rick has grown as a woodworker and a content creator right in front of his audience. The content on WoodWorkLIFE's YouTube and Instagram pages ranges from simple instructional material, to tool reviews, DIY projects, and Way over-the-top wooden PCs. Keep your tools sharp and keep your mind sharper, but above everything else have fun and do what you love.

With 4,500 Instagram followers, over 5,500 Facebook followers, and over 37,000 Youtube subscribers, Rick is

making it happen in Saint Louis. Rick will be visiting here from Saint Louis to talk to us about documenting your build and photographing the finished product to put on social media such as YouTube, Instagram, and Facebook.

I do find this aspect of woodworking to be fascinating and I appreciate that Chris made the contact and invited Rick out here to give us some firsthand knowledge about how to use social media to enhance our woodworking.

See more information on page 11.

**Matthew  
Nowak**  
Director of  
Programs



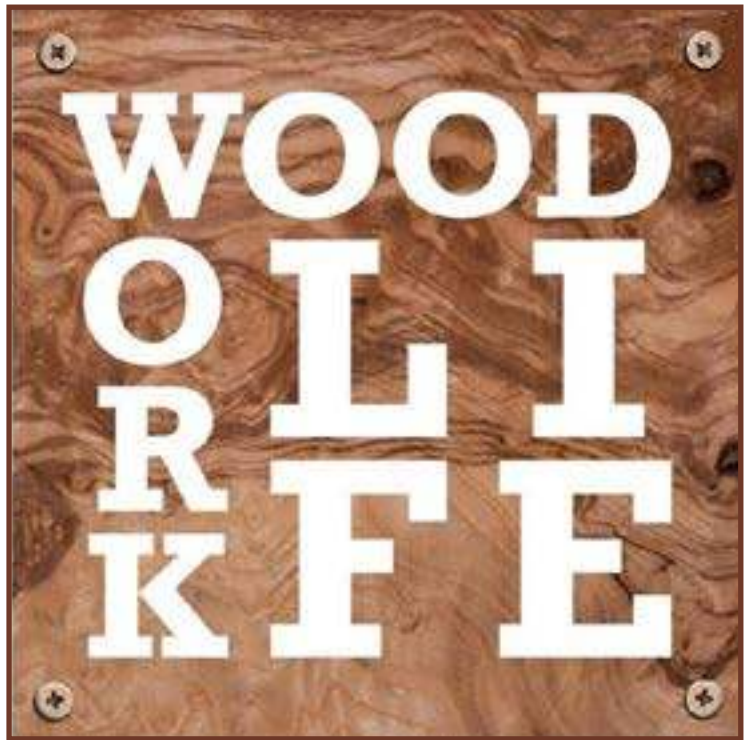
## MARCH MEMBERSHIP MEETING PROGRAM

*Continued from previous page, by Chris McCauley*

**R**ick LaFaver from WoodWorkLIFE makes stuff that last with wood and puts it on the internet. Rick started WoodWorkLIFE in 2016 on YouTube with the first video he ever edited and has grown as a woodworker and a content creator in front of his audience. The content on WoodWorkLIFE's YouTube and Instagram pages ranges from simple instructional content, to tool reviews, DIY projects, and WAY over the top wooden PCs. Keep your tools sharp, and keep your mind sharper, but above everything have fun and do what you love.

With 4,500 followers on Instagram, over 5,500 followers on Facebook, and over 37,000 subscribers on YouTube!!!

Rick (who lives in St. Louis) will be



talking with us about documenting your build and photographing the finished product to put on social media such as YouTube and Instagram or Facebook

Personally, I'm really looking forward to what he has to say and see how I can use modern technology to show off our traditional (and sometimes not so traditional) craft

Check Out Wood.Work.Life at  
<https://www.woodworklife.com>

<https://www.facebook.com/theWoodWorkLife>

<https://www.instagram.com/thewoodworklife>

<https://www.youtube.com/woodworklife>





# Bloomers



# Hardwoods

## Products Available at Bloomer Hardwoods

- Ash 4/4 & 8/4
- Cedar Aromatic
- 4/4, 8/4, & 12/4
- Cherry 4/4, 8/4 & 12/4
- Maple 4/4
- Pecan 4/4 & 8/4
- Red Oak 4/4 & 8/4
- Walnut 4/4 & 8/4
- White Oak 4/4
- Plywood for Cabinets
- And many other Local Hardwoods

## Offered Services

- Log Milling
- Custom Drying 20,000 bf
- Planing
- Straight lining
- Glued Panels
- Wide Belt Sanding
- Profile Replication
- Custom Moulding
- Template matching of existing pattern

**Phone: 816.330.3596**

**13585 45 Highway, Platte City, MO 64079**

**Hours: MONDAY - FRIDAY 8:30AM - 4:30PM**



## WHAT IS THE 'SCOOP' WITH THE UPGRADED CNC MACHINE?

By Mike Sommers

As many of you know, recently we had the CNC returned to the Guild, after an extensive repair and restoration. Prior to the upgrade, use of the CNC was somewhat unrestricted and unstructured. The CNC was not operating correctly, and the decision of the CNC SIG was to upgrade the machine. Fortunately, two Guild members, Bob Detwiler and Mike Resch volunteered to use their knowledge to fundamentally rebuild the machine, from the ground-up.

Because the new machine operates quite differently than before, it was decided that Guild members must have a fundamental understanding of the software that is used with the CNC, before they can learn the new operating aspects of the current CNC. For the members that used the CNC before the upgrade, that requirement was easy, and as a result, a number of people are now 'certified' to use the CNC.

Some people looked at the CNC as an automated way of creating signs, or personalizing a project with a name or an inscription. In reality, there are many more things that any Guild member can do with the CNC once they are knowledgeable with the system. Below is listed a sample of interesting projects

that members can tackle with the CNC. This is just an example of what a CNC can do when used by a knowledgeable woodworker. All of these projects involve woodworking... some software knowledge... and basic CNC skills. For example, why not make;...

### Kinetic Art

Imagine wall art. It is a circular object, nearly two feet in diameter, which, when wound up... spins in different directions and speeds. The effect is mesmerizing,



entrancing, and really, really cool. The spinning spokes make for a great conversation piece.

### A Personalized Rolling Pin

Forget the traditional rolling pin.



Imagine a rolling pin that says what you think about someone's culinary skills (good or bad).

### Trout Bookends

Everyone has books. Some people like fishing. Why not



create an 'expandable' fish that matches their fish stories?

### A Wooden Gear Clock

A CNC machine cuts at a tolerance of almost 1/1,000 of



Continued on Next Page (14)

Continued from Previous Page (13)

an inch. That allows CNC users to actually create gears which operate quite efficiently. Many clock designs are available that range from simple, to quite complex.

### A Personalized Cutting Board

Making a cutting board is a popular project at the Guild.



Imagine 'ramping up' that cutting board by adding drain channels and a drain reservoir in the surface of the cutting board. Then, ramp it up again. Add a personalized message on the back of the board, to make it unique.

### A Wooden Chain

Some people are all tied down by chains. Some woodworkers see a chain as a series of challenges. Why not make your own chain?



But do it with a CNC to make it easier and faster.

### A Tea Bag Dipper

Many of our woodworking projects are quite utilitarian. Perhaps our 'significant other'



would enjoy something that is both whimsical and functional, at the same time.

### A 'Rope Twist' Candle Holder



This project involves a traditional lathe, as well the CNC, which has the capability to produce a 'hollow spiral' effect, that would be difficult to do without a CNC.

### A Kitchen Cooking Timer

This is a variation of the horological concept that can be used in the kitchen to monitor



the cooking times, and rings a bell when the selected time has elapsed.

You do not have to start to create the projects shown above (or many other projects), from scratch. The CNC world uses 'digital blueprints', known as DXF files, which are ultra-precise digital design layouts which serve as the cutting guides for creating a project with the CNC. The plans for most of the projects shown above, and hundreds of other projects, can be purchased in DXF format. These DXF files are then imported into the CNC design software (VCarve-Pro or Aspire) so they can be positioned and manipulated to meet the concepts you are creating.

### I Never Learned the CNC. How Do I Get Started?

Continued on Next Page (15)

**Continued from Previous Page (14)**

Jumping into the CNC world is not abandoning the skills you learned as a woodworker. All projects where a CNC is involved, also require woodworking skills to bring these projects to fruition. The CNC is just another tool in your tool chest.

Adding the CNC to your repertoire only requires four things;

1. **Go to the Guild's CNC SIG page** and look at the "Getting Started with VCarve Pro" document. It shows how to download the VCarve Pro

software and the "Configuring VCarve Pro for Makerspace" document shows how you can create your projects at home and then bring them into the Guild to run on the CNC. Both VCarve Pro and Makerspace software are free to Guild members.

2. **Learn the software.** You do not need to become a CNC Ninja, but learn the basics of how it works, and what it can do. Look at the online and YouTube videos that are referenced in the instructions. Follow them, because that will build your functional knowledge.

3. **Read and understand** the "Basic Operation of the CNC" document that is posted on the SIG web page.

4. **Put it all together.** Think about creating basic CNC projects. Translate these thoughts into VCarve Pro designs.

*Now you are ready to create the simple project used in the certification process, and then after that, you can launch into a whole new world of woodworking capabilities by using the CNC.*

---

## MEMBER PROJECTS



### Photos Courtesy Neal Ray Shoger

**Scott Allen**

**Project Name: Paduk Table**

**Materials: Paduk, Lowes  
Table Legs**

**Finish: Arm-R-Seal, Oil, Poly**

**Challenges: Finish**



## PLEASE WELCOME THESE 34 NEW MEMBERS WHO JOINED THE GUILD IN FEBRUARY 2019

<u>FIRST NAME</u>	<u>LAST NAME</u>	<u>HOMETOWN</u>	<u>STATE</u>	<u>MEMBERSHIP</u>	<u>JOINED</u>
Michael	Knoedler			Benefactor	02/27/19
Fred	Jones			WW+	02/27/19
Wil	Anderson	Overland Park	KS	WW+	02/27/19
Charlie	Baul	Raytown	MO	Student	02/10/19
Bob	Berry	Shawnee	KS	Senior	02/21/19
Asher	Bittan	Overland Park	KS	WW+	02/24/19
Donald	Bolieau	Avondale	MO	WW+	02/11/19
Kelly	Bonavia	Prairie Village	KS	Benefactor	02/23/19
Terry	Bruce	Kansas City	MO	WW+	02/21/19
Jason	Byrne	Overland Park	KS	WW+	02/21/19
Lauren	Coke	Bucyrus	KS	WW+	02/23/19
Rutvik	Date	Overland Park	KS	WW+	02/28/19
Josh	Diatte	Tulsa	OK	Benefactor	02/16/19
Chris	Ediger	Overland Park	KS	WW+	02/02/19
Dan	Ford	Kansas City	MO	WW+	02/09/19
Jonathan	Ford	Kansas City	MO	WW+	02/09/19
Thomas	Franklin	Leawood	KS	Senior	02/02/19
Leland	Hawley	Shawnee	KS	Sawdust	02/21/19
Karl	Hesson	Kansas City	MO	Sawdust	02/11/19
Lori	Hill	Overland Park	KS	Regular	02/23/19
Jason	Jolly	Kansas City	MO	Sawdust	02/26/19
Darrick	Jones	Lenexa	KS	Sawdust	02/28/19
Ryan	Kennedy	Shawnee	KS	WW+	02/20/19
Bruce	Kusko	Merriam	KS	WW+	02/21/19
Kael	Le	Lenexa	KS	Sawdust	02/26/19
Amber	Mach	Kansas City	KS	WW+	02/27/19
Kris	Martinson	Kansas City	MO	Senior	02/15/19
Jonathan	Peuchen	Kansas City	MO	WW+	02/21/19
Jason	Rasmussen	Kansas City	MO	Sawdust	02/12/19
Tom	Russell	St. Joseph	MO	Senior	02/23/19
Brian	Scherping	Kansas City	MO	WW+	02/13/19
John	Super	Olathe	KS	WW+	02/11/19
Adam	Takac	Richmond	MO	Sawdust	02/13/19
Kevin	Turk	Kansas City	KS	Sawdust	02/02/19

**Current Membership: 775**



## MEMBER PROJECTS

*James Childress*

**Project Name:** Spoke-Shave & Shoulder Plane

**Materials:** Redbud, Honduran Rosewood, Jatoba Maple

**Finish:** Boiled Linseed Oil



**Photo Courtesy  
Neal Ray Shoger**

*John Tegeler*

**Project Name:** 3 Demensial

**Materials:** 1/8" Baltic Birch & Walnut Frame



# Kansas City Woodworkers Guild March 2019 Open Shop Schedule

*Supersedes all previous  
Open Shop Schedules for  
this time period*

day	March	Date	9am	10	11	12	1	2	3	4	5	6	7	8	9pm
Friday	March	1										Andrew Carr			
Saturday	March	2	Mike Jones						Basic Skills Class	George Rexroad					
Sunday	March	3		Chuck Saunders					Chris McCauley Powertool SIG						
Monday	March	4						Ron Haw				Gary Strohm			
Tuesday	March	5	Gary Creek			Craig Arnold							Kara Paris		
Wednesday	March	6	Roger Bartlett				Roland Mohler		Scott Engelmann 3:30			LC Meeting			
Thursday	March	7	Gary Mielke									Basic Woodworking			
Friday	March	8										Bill Lintner			
Saturday	March	9	Dave Kraatz				Norm Carpenter								
Sunday	March	10		Rob Young					Safety Orientation	Mark Waugh					
Monday	March	11	John Johnson				Ron Haw					Woodturners General Meeting			
Tuesday	March	12	Matt Nowak			Ron Lomax			Craig Arnold			Rick Chandler Safety Comm Mtg			
Wednesday	March	13	Bob Caldwell				Roland Mohler		Scott Engelmann 3:30			Scrollsaw SIG			
Thursday	March	14	Gary Mielke									Basic Woodworking			
Friday	March	15						Mike McCauley				Marselle Bredemeyer			
Saturday	March	16	Dave Kraatz							George Rexroad					
Sunday	March	17		Chuck Saunders						Chris McCauley					
Monday	March	18						Ron Haw				Gary Strohm			
Tuesday	March	19	Gary Creek			Craig Arnold									
Wednesday	March	20	Roger Bartlett									General Meeting			
Thursday	March	21	Gary Mielke									Basic Woodworking			
Friday	March	22										Bill Lintner			
Saturday	March	23	Dave Kraatz												
Sunday	March	24		Rob Young					Handtool SIG	Wayne Peterson					
Monday	March	25						Ron Haw							
Tuesday	March	26	Matt Nowak			Ron Lomax			Craig Arnold			Rick Chandler Carving SIG			
Wednesday	March	27	Bob Caldwell				Roland Mohler		Scott Engelmann 3:30			Kevin Thomas CNC SIG			
Thursday	March	28	Gary Mielke												
Friday	March	30										Andrew Carr			
Saturday	March	29	Mike Jones												
Sunday	March	30		Chuck Saunders						Mike McCauley					
Monday	March	31						Ron Haw							
Tuesday	March	29	Gary Creek			Craig Arnold						Rick Chandler			
Wednesday	March	30	Roger Bartlett				Roland Mohler		Scott Engelmann 3:30						
Thursday	March	31	Gary Mielke												

# Kansas City Woodworkers Guild

## April 2019 Tentative Open Shop Schedule

day	April	Date	9am	10	11	12	1	2	3	4	5	6	7	8	9pm
Monday	April	1						Ron Haw				Gary Strohm			
Tuesday	April	2	Gary Creek			Craig Arnold							Kara Paris		
Wednesday	April	3	Roger Bartlett				Roland Mohler		Scott Engelmann 3:30			LC Meeting			
Thursday	April	4	Gary Mielke									Basic Woodworking			
Friday	April	5										Andrew Carr			
Saturday	April	6	Mike Jones						Basic Skills Class	George Rexroad					
Sunday	April	7		Chuck Saunders					Chris McCauley Powertool SIG						
Monday	April	8	John Johnson				Ron Haw					Woodturners General Meeting			
Tuesday	April	9	Matt Nowak			Ron Lomax			Craig Arnold			Rick Chandler	Safety Comm Mtg		
Wednesday	April	10	Bob Caldwell				Roland Mohler		Scott Engelmann 3:30			Scrollsaw SIG			
Thursday	April	11	Gary Mielke									Basic Woodworking			
Friday	April	12										Bill Lintner			
Saturday	April	13	Dave Kraatz				Norm Carpenter		Safety Orientation						
Sunday	April	14		Rob Young						Mark Waugh					
Monday	April	15						Ron Haw				Gary Strohm			
Tuesday	April	16	Gary Creek			Craig Arnold									
Wednesday	April	17	Roger Bartlett									General Meeting			
Thursday	April	18	Gary Mielke									Basic Woodworking			
Friday	April	19						Mike McCauley				Marselle Bredemeyer			
Saturday	April	20	Dave Kraatz							George Rexroad					
Sunday	April	21		Chuck Saunders						Chris McCauley					
Monday	April	22						Ron Haw							
Tuesday	April	23	Matt Nowak			Ron Lomax			Craig Arnold			Rick Chandler	Carving SIG		
Wednesday	April	24	Bob Caldwell				Roland Mohler		Scott Engelmann 3:30			Kevin Thomas	CNC SIG		
Thursday	April	25	Gary Mielke									Basic Woodworking			
Friday	April	26										Bill Lintner			
Saturday	April	27	Dave Kraatz												
Sunday	April	28		Rob Young					Handtool SIG	Wayne Peterson					
Monday	April	29						Ron Haw							
Tuesday	April	30	Gary Creek			Craig Arnold						Rick Chandler			

## MARCH SKILL BUILDER AND FOLLOW UP...

The March Skill Builder was conducted by Noriko Kosukegawa, who is from Japan and was trained in Japanese Hand Tool usage. It was attended by over 40 woodworkers, whom

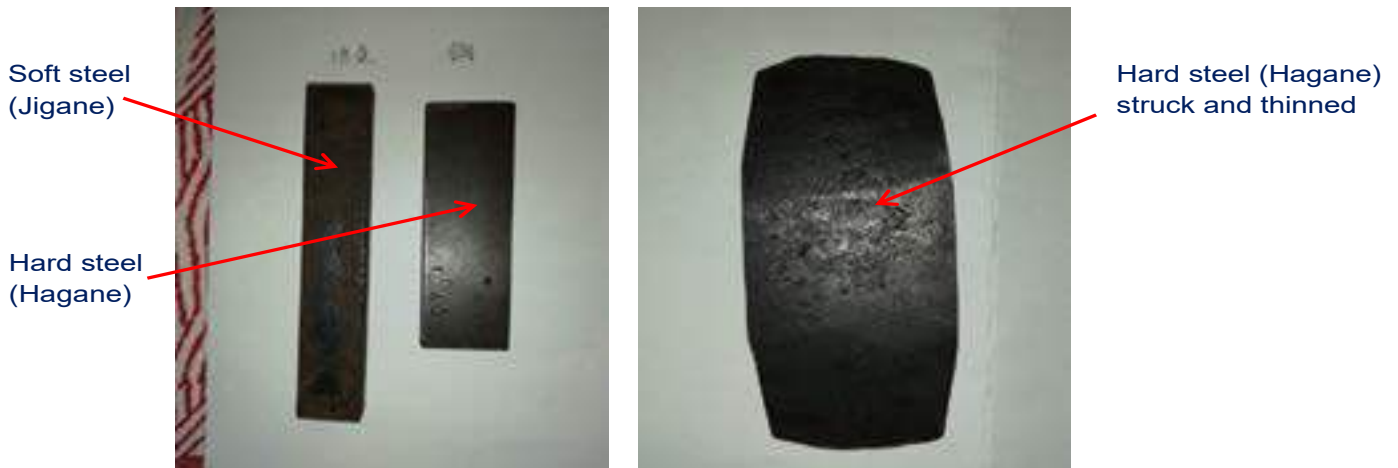
by all accounts learned a lot and had a good time. Throughout her presentation Noriko welcomed questions and answered them to the best of her ability.

One of the questions she was

unable to answer, at the time, was why the plane blades were blackened?

Noriko contacted her instructors and received the following in reply.

1. Steel piece is struck and thinned. Carbon steel, white steel (shiro-gami), or blue steel (ao-gami) are the types of hard steel commonly used for chisels in Japan.



2. Blades for traditional woodworking tools, such as chisels and planes, in Japan are constructed by laminating two different types of steel together: soft steel (Jigane) and hard steel (Hagane – carbon, white, blue, etc.) During this laminating process to forge the blade, boric acid and borax are added (1652°F / 900°C).
3. The two types of steel are struck together for lamination. For chisels, the hard steel will cover three sides: back and both ears of the blade.

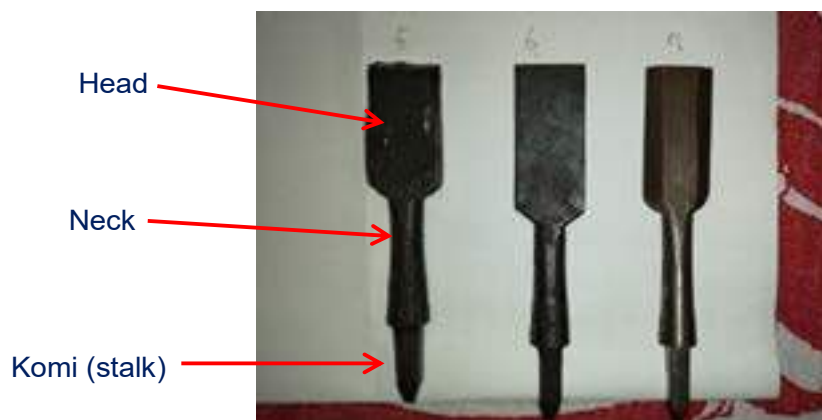




- The laminated steel will be cut in half. (One laminated metal yields two chisel blades)



- The blade's head, neck, komi (stalk), and etc. will be formed.
- At this point, the microstructure of the metal has been compromised due to repeated heating; the annealing process is needed to correct the microstructure. Temperature at this point is 1742°F / 950°C. The metal will rest in straw ash or charcoal dust for 24 hours for a slow cooling.



- The blade is filed to its final shape and the back side will be hollowed.
- Insulation coating (clay powder) will be applied on the surface before the quenching process so that the blade will be properly and evenly hardened.
- Quenching. The blade will be dropped in water for a rapid cooling.

10. The blade will bath in oil (356°F / 180°C) for 20 to 25 minutes for tempering. This tempering process will make the blade tough and elastic (nebari).
11. Beveled and roughly sharpened blade will be installed on a handle (finish).

Finished chisel  
(front)



Finished chisel  
(back)



\*Why are blades black on the outside? The clay powder applied before the quenching process creates a surface oxide film on the outside of blades which will make the blades resistant to rust. Some smiths polish the back of blades to remove the black oxide film. Hand plane blades are often polished (oxide film is removed).

## MEMBER PROJECTS



*Ray Owens*

*Project Name: ZigZag Box*

*Materials: Maple, Walnut,  
Cherry*

*Finish: PolyUrethane*

**Photo Courtesy  
Neal Ray Shoger**

*Wayne Peterson*

*Project Name: Box*

*Materials: Curly Maple,  
Walnut*

*Finish: BLO & Beeswax*



**NEXT  
MEMBERSHIP  
MEETING IS  
SCHEDULED  
FOR  
MARCH 20  
AT 7:00PM**

**LEADERSHIP COMMITTEE MEMBERS**

President:..... Craig Arnold ..... [president@kcwoodworkersguild.org](mailto:president@kcwoodworkersguild.org)  
 Vice-President:..... Cal Hobbs ..... [vicepresident@kcwoodworkersguild.org](mailto:vicepresident@kcwoodworkersguild.org)  
 Secretary: ..... Sharon Pugh ..... [secretary@kcwoodworkersguild.org](mailto:secretary@kcwoodworkersguild.org)  
 Treasurer: ..... Gary Mielke ..... [treasurer@kcwoodworkersguild.org](mailto:treasurer@kcwoodworkersguild.org)  
 Member-at-Large: ..... Tim Locke ..... [memberatlarge@kcwoodworkersguild.org](mailto:memberatlarge@kcwoodworkersguild.org)  
 Director of Events:..... Alex Scott..... [events@kcwoodworkersguild.org](mailto:events@kcwoodworkersguild.org)  
 Director of Membership:..... Wayne Peterson..... [membership@kcwoodworkersguild.org](mailto:membership@kcwoodworkersguild.org)  
 Asst Director of Membership:.. Joseph Griesen .....  
 Director of Communication:.. Roya Souag ..... [communication@kcwoodworkersguild.org](mailto:communication@kcwoodworkersguild.org)  
 Director of Sponsorship:..... Denny Walton..... [sponsorship@kcwoodworkersguild.org](mailto:sponsorship@kcwoodworkersguild.org)  
 Director of Training: ..... Norm Carpenter..... [training@kcwoodworkersguild.org](mailto:training@kcwoodworkersguild.org)  
 Asst Director of Training: ..... Mike McCauley [assistanttraining@kcwoodworkersguild.org](mailto:assistanttraining@kcwoodworkersguild.org)  
 Director of Programs: ..... Matt Nowak..... [programs@kcwoodworkersguild.org](mailto:programs@kcwoodworkersguild.org)  
 Director of Assets:..... Chuck Saunders..... [assets@kcwoodworkersguild.org](mailto:assets@kcwoodworkersguild.org)  
 Director of Safety:..... Mike Jones ..... [safety@kcwoodworkersguild.org](mailto:safety@kcwoodworkersguild.org)  
 Asst Director of Safety..... Laura Provance .....  
 Newsletter Editor: ..... Ron Haw ..... [newsletter@kcwoodworkersguild.org](mailto:newsletter@kcwoodworkersguild.org)  
 Web Master: ..... Open..... [webmaster@kcwoodworkersguild.org](mailto:webmaster@kcwoodworkersguild.org)  
 Librarian:..... Andrew Carr..... [library@kcwoodworkersguild.org](mailto:library@kcwoodworkersguild.org)

**VISIT THE KANSAS CITY WOODWORKERS GUILD  
ONLINE AT  
[www.kcwoodworkersguild.org](http://www.kcwoodworkersguild.org)**

**Visit the  
Kansas City Woodworkers  
Guild at  
3189 Mercier Street  
Kansas City, Missouri**

