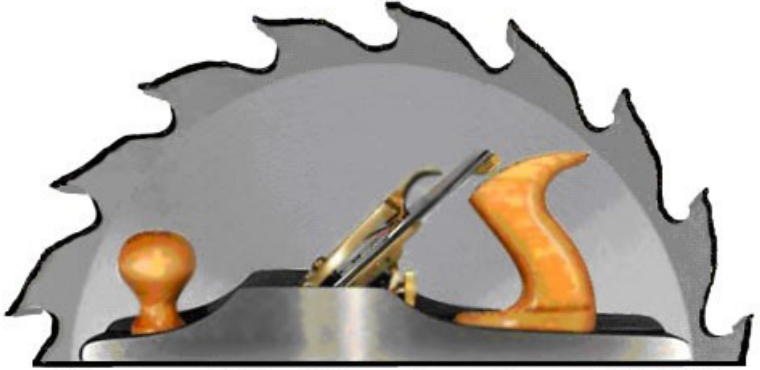


WOOD WORDS

FEATURED THIS MONTH

President's Notes.....	1
Membership Dues.....	2
Financial Update.....	7
Sponsorship Notes.....	13
Remembering Jim Stuart.....	19
Proposed By-Law Changes.....	22-23



Kansas City Woodworkers' Guild

PUBLISHED BY THE KANSAS CITY WOODWORKERS GUILD * 3289 MERCIER ST * KANSAS CITY * MO * 64111

PRESIDENT'S MESSAGE

As with the last couple of months, my remarks here are not the *Beacon of Hope* I aspire to bring to you each month.

The Membership dues will increase for 2019.

Two factors contributed to the need to increase the dues: The expense and settlement of the recent lawsuit against the Guild and the loss of revenue from a fundraising project the Guild has produced for several years.

Wayne Peterson, Membership Director, will spell out the methodology and amount of increase in his column. And the increase will not affect every membership category.

The Guild Board of Directors will present to the membership for their approval bylaw changes that affect the manner in which Leadership Committee members and Board members are elected and term limits to each office.

Additionally, there are refinements in the wording of

the annual meeting section and removal of officers for the Board and Leadership Committee.

The vote is scheduled for the October 17, 2018, General Membership meeting. Bylaw changes require a quorum of at least 10 percent of the membership to be present for the vote. These bylaw changes are required as part of the Mediation Agreement which settled the Lawsuit against the Guild. The Board of Directors encourages members to vote to adopt the bylaw changes. Members can view the current bylaws in the Members section of the Guild's website.

The complete text of bylaw changes is included elsewhere in this newsletter.



Sincerely,
Craig Arnold
President
Kansas City
Woodworkers' Guild

ANNUAL MEMBERSHIP DUES CHANGES

Our Guild continues to grow, currently we are at a total of 842 members – we saw 34 new members in the month of August.

As you may have heard, after eighteen years, changes are coming to KCWG membership dues structure. Due to the reasons laid out in the *President's Letter*, there will be an increase in dues, beginning in 2019, for those members who use the shop. The new dues structure is:

Membership Level	\$/yr
Benefactor	\$150
Woodworker Plus	\$125
Sawdust Maker	\$95
Regular	\$50
Senior	\$35
Student	\$25

This represents a \$25 annual increase for the Benefactor and Woodworker Plus membership levels, a \$20 annual increase for Sawdust Maker memberships, and there will be no change for Regular, Senior, and Student memberships where no shop privileges are extended.

We will continue to extend the 20% discount on Guild classes and merchandise for Woodworker Plus and Benefactor memberships.

We will continue the \$5.00 early renewal discount for membership renewals paid between December 1, 2018, and January 31, 2019.

We will continue to give the \$5.00 discount for joining both the KC Woodworkers Guild and the KC Woodturners at the same time.

There is one more significant change – the member renewal period is being shortened this year.

To maintain your membership and Green card status you must renew by February 28, 2019. After February 28th, you will be considered a new member and will need to re-qualify for your Green Badge.

Wayne Peterson
Membership Director



COMPREHENSIVE MEMBERSHIP ROSTER

Hi Everyone,

I'm afraid that the Comprehensive Membership

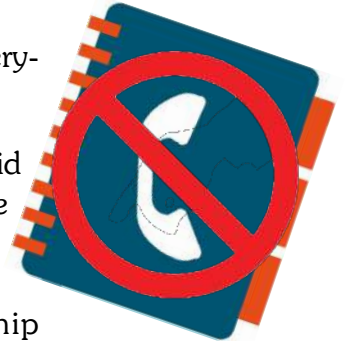
Roster will no longer be available, online, through the Kansas City Woodworkers Guild website. It is our hope that this is a temporary measure brought on by the recent settlement the Guild came to with a former member.

If there is anyone you wish to find or contact, please message our Membership Director, Wayne Peterson, or the Assistant Membership Director, Joseph Greisen and they will happily retrieve the information for you.

Additionally, there will also be a physical copy of the comprehensive membership directory in the office at the Guild. Just ask any officer or foreman if you are not sure where to find it.

Thank you for your understanding and accept our apologies for the inconvenience.

Roya Souag,
Director of Communications



"HOBBS"ERVATIONS

Over the last few years, I have been nominally involved in the guild, teaching a class or two and showing up every couple of months for the regular meeting. With my daughter off to college and my son a junior in high school, I have resolved to be around a little more and – more importantly – to contribute.

With that in mind, when Norm and Mike suggested the carved shell for the September Skill Builder, I instantly agreed. We met on September 1, with 10 or 15 attendees and went after it. I was able to walk through the step-by-step process over a couple of hours, and had a great time doing so!

When teaching a class or presenting a skill, I have found many times that I have benefitted more than anyone, as I challenge myself to be prepared and to really think through why I do what I do. There's no time for trial



and error, which is what happens in my shop some evenings. In addition, the members who were there asked many questions and made some great suggestions, making everyone

there learn even more.

So, in conclusion, come out to the Skill-Builder sessions. We have some great talent that are teaching some fantastic skills, and better yet, they are free! And offer your time to be the Skill Builder. We all, including you, will benefit.

I plan to attend in the coming months, hope to see you there!

Cal Hobbs
Vice-President



COMPOUND CUTTING ON THE SCROLL SAW

By David Roth

On Sept. 12th the Scroll Saw Special Interest Group



gathered at the Kansas City Woodworkers Guild. About 20 people were in attendance.

Members brought in a great selection of Show and Tell items and shared their techniques with the group.

We then had a program on Compound Cutting wood on the

Scroll Saw by David Roth.

David talked about blade selections. His main go to blade is a number 5 skip tooth. He also likes to use a number 7 but a number 7 is more difficult for sharp turns. David also mentioned that if one is starting out in compound cutting, you should use the blades that you already have and see if those work. He also mentioned and showed how he holds the wood safely to make cuts on the scroll saw. Remember, you are cutting 1-1/2 inch thick pieces of wood.

David also talked about the type of woods to use. Bass, mahogany, and aromatic cedar are easier to cut and woods like cherry, rock maple, and purple heart are more difficult, but doable. You will just have to take it

slow, and turn down your speed on the scroll if using harder woods.

David also talked about the different types of compound cutting one can make. There are Christmas ornaments, Chess pieces, and Sports themes, just to name a few.

Woodcraft, one of our sponsors of the KC Woodworkers Guild, carries books on compound cutting. Call them first to see if they have the books in stock.

(913) 599-2800. Another resource is the Johnson County Library and the internet. You can also check out YouTube which also a lot of great videos on the subject.

Until next time, Have fun in the shop, and be safe!!!

HAND TOOL SPECIAL INTEREST GROUP

The Hand Tool Special Interest Group meets on the 4th Sunday of the Month from 2:00 to 4:00 pm. All members and their guests as well as interested prospective members are welcome and

invited to attend SIG meetings.

Please join us for the KCWG Hand Tool SIG on September 23rd, from 2pm to 4pm.



This month we're going to be looking at the shunned finishing method - paint. In particular, we're looking how to get a good surface finish with milk paint. We'll be looking at two products - the General Finishes Milk Paint and Old Fashioned Milk Paint - and their usage, tips, tricks, and effects. Much like stains and dyes, painting can be just as complex and your techniques will determine the end look of your project. For better or worse.

By Andrew Carr

LAURA PROVANCE TO INSTRUCT ONE DAY SHAKER STEP STOOL CLASS



If you are looking for a project that is incredibly versatile and really fun to make, Shaker Steps are for you. This one board project will give you a



This one board project will take you through the process of preparing stock, marking and cutting your parts, executing the joint work, and fitting your piece together. Students



great opportunity to practice dove tail joints. Plus, once you have one of these handsome, easy to move step stools you'll need one in every room. Warning: you're friends and family will realize they need one too! Not only are Shaker Steps incredibly handy in the kitchen or garage, but they are also great little chairs for kids.

will use the chop saw, band saw, drill press and hand jig saw to speed up the work, but this is primarily a hand tool class. This is an excellent project to pick up some good information on hand cutting dovetails and the process in building furniture. Material (1"x10" Premium Pine) is provided for the course. To sign up for this class, follow this link: <http://kcwoodworkersguild.org/classes/#OBSS10-2018>

Join Laura Provance as she takes you through the process of building a traditional Shaker footstool

By Laura Provance

FOCUS ON PERSONAL PROTECTIVE EQUIPMENT

You've certainly noticed that whenever you come into the guild to take advantage of open shop periods or to attend a meeting that may be scheduled during an open shop period that more and more of our members are taking advantage of both hearing and respiratory equipment to help preserve their long term health.

Additionally, the guild's Safety Committee continues to promote member safety by scheduling

presentations by health professionals as the featured program at monthly membership meetings. We've enjoyed a presentation from a hearing specialist and a retinal specialist, who coincidentally, was the surgeon who is employed by both the Kansas City Chiefs and the Kansas City Royals to treat any eye injuries suffered by members of either team.

As mentioned earlier in this newsletter, this month's program at the membership meeting will

focus on respiratory safety and the dangers that you face in the shop from wood dust.

As we move to the future, we will continue to focus on member safety and will strive to suggest and enforce programs that will keep you as safe as possible through both continued PPE education and through safety focused offerings from guild sponsors.

Thanks for all of your help!



Prescription sunglasses as low as

\$27.00!

FOR MORE INFORMATION VISIT US AT WWW.MYEYEWEAR2GO.COM



Choose from a wide range of prescription safety glasses & other safety products!

CHECK US OUT AT WWW.RX-SAFETY.COM



Phillips Safety Products, Inc.

Specialized industrial safety & medical products

- Laser Safety
- Radiation Protection
- Welding and IR Safety
- Hot Glassworking Eyewear

VIEW OUR WEBSITE AT WWW.PHILLIPS-SAFETY.COM

Use Coupon Code:

**KCWG25
FOR 25% OFF!**

Across all three websites!

PLEASE WELCOME THESE 34 NEW MEMBERS WHO JOINED THE GUILD IN AUGUST 2018

<u>FIRST NAME</u>	<u>LAST NAME</u>	<u>HOMETOWN</u>	<u>STATE</u>	<u>MEMBERSHIP</u>	<u>JOINED</u>
Mark	Adams	Parkville	MO	Sawdust	8/30/2018
Leonard	Doelling	Lee's Summit	MO	WW+	8/16/2018
Jacob	Douglas	Riverside	MO	WW+	8/16/2018
Tim	Downs	Kansas City	MO	Sawdust	8/4/2018
Terry	Evans	Overland Park	KS	WW+	8/8/2018
Tad	Fannin	Olathe	KS	Sawdust	8/16/2018
Jacque	Flowers	Kansas City	MO	WW+	8/30/2018
Dane	Frazier	Kansas City	MO	WW+	8/30/2018
John	Friesen	Basehor	KS	Senior	8/16/2018
John	Gallagher	Overland Park	KS	WW+	9/1/2018
Allen	Garner	Independence	MO	WW+	8/3/2018
Scott	Goering	Kansas City	MO	WW+	8/14/2018
Jonathan	Goetz	Kansas City	MO	WW+	8/5/2018
Greg	Hellhake	Kansas City	MO	WW+	8/16/2018
Wes	Huskisson	Kansas City	MO	Sawdust	8/5/2018
Rob	Land	Leawood	KS	WW+	8/3/2018
Michael	Lemm	Leavenworth	KS	WW+	8/23/2018
John	Matthews	Basehor	KS	Senior	8/16/2018
Stinson	McClendon	Kansas City	MO	WW+	8/18/2018
Kaine	Meshkin	Lansing	KS	WW+	8/16/2018
Chuck	Morris	Lenexa	KS	Sawdust	8/23/2018
Jacob	Nallia	Lenexa	KS	Sawdust	7/22/2018
Phan	Nguyen	Gladstone	MO	WW+	8/16/2018
Lawrence	Reaman	Kansas City	MO	Sawdust	8/16/2018
John	Schussler	Overland Park	KS	Sawdust	8/5/2018
Will	Shadwick	Kansas City	MO	Sawdust	8/14/2018
Chee Long	Siah	Overland Park	KS	Sawdust	8/5/2018
Ed	Sparks	Shawnee	KS	Sawdust	8/4/2018
Ed	Stewart	Kansas City	KS	WW+	8/15/2018
Kelsey	Stines	Kansas City	MO	WW+	8/24/2018
Anthony	Thompson	Kansas City	MO	WW+	8/8/2018
Larry	VandeGarde	Overland Park	KS	WW+	8/16/2018
Frank	Vernacchia	Valley Center	KS	Regular	8/8/2018
Creighton	Young	Kansas City	MO	Sawdust	8/8/2018

FINANCIAL UPDATE

For those that have not read the mediation agreement to end the lawsuit it is available on the website in the “Members Only” area, the last item under “Corporate Documents”. One of items in the mediation agreement was to have an independent CPA firm conduct an audit of the Guild’s financial records for 2017.

House Park Dobratz & Wiebler, P.C. was selected to perform the audit. They are rated as one of the top 25 local CPA firms and have audited numerous not-for-profit organizations. The audit was completed September 4, 2018 and is available on the website in the “Members Only” area the last item under “Financials” (Audit Reports) AR17. The document contains the auditors Financial Audit Report and the Required Communications and Management Letter. The audit did not identify any deficiencies in internal control that they considered to be material weaknesses. Their audited financial statements determined that the Guild’s records presented fairly, in all material respects, the assets, liabilities, and net assets of the Guild. The audit does not require any change to the way records are kept or reported.

The mediation agreement also requires additional accounting and reporting of Guild Shares. Rather

than creating the additional accounting and reporting systems it was decided by the Board to discontinue the program. The results of that effort are reported as part of the August financial statement which is available on the website in the “Members Only” section.

This is also the time of year when the Guild starts the budget process for 2019. If you have recommendation or suggestions on what should be in the budget, please contact any member of the leadership committee. The plan is to have the budget completed by early December.

I am also happy to report that Mike Resch has volunteered to help me. He has been appointed Assistant Treasurer by the Board and I welcome his assistance.

Please read the above-mentioned material and let me know if you have questions or comments.



Gary Mielke
Treasurer

MEMBER PROJECTS

**Photo Courtesy
Neal Ray Shoger**

Bill Rivet
Stanley #10 1/2 Hand Plane Restoration

Finish: Stan Lacquer

Challenges: Repair of Tote



Urban Lumber Company September 2018 Inventory Update

It has been a while since we have issued an email update, we were waiting for a great kiln load to get brought in- and it has!



We brought in a great deal of large walnut and hackberry slabs, including our existing inventory of 13.5' sweet gum, elm, cypress, and walnut 9/4 boards featured on our new "big slab rack". You can't miss it. The new inventory is 7/4, or 1.75" rough, usually planes down to 1-3/8" or so. We also have a lot of quarter sawn oak and sycamore in.

We have also been busy making custom fixtures, and custom sawing. Custom sawing is always a great way to get good lumber cheap, so contact us if you have a tree scheduled for removal.

We also got our wide belt sander up and running, so we now have the ability to sand/surface up to 37" wide. This is a great addition to our existing milling services of joining and planing.

We are up to over a million pounds of recycled wood and over 100,000 board feet of urban lumber sold. Thank you all very much!



SEPTEMBER 19 GENERAL MEETING'S PROGRAM: WOOD DUST SAFETY

I would venture to say that the biggest safety threat to the woodworker comes not in the form of bodily injury from a power tool, but from *wood dust*. It is the tiny and easily overlooked wood dust particles that can cause the most long-term damage.

Relative to this critical topic, **Chris Fry, Industrial Hygienist, APEX Environmental**, will be our presenter at this month's **September 19, 2018 General Meeting**. Chris will explain how wood dust can injure the average woodworker. It's not the large chips and visible sawdust, but the invisible fine dust, sometimes called "coarse inhalable particles," floating in the air long after the tools have stopped running. These invisible particles get inhaled and cause tiny wounds and scarring to our lungs. Each time this happens, it causes a very small amount of irreversible damage. The immediate effect is unnoticeable, but over long periods of time, this can result in significantly decreased lung capacity, and a number of other health issues.

In addition to the dust collection systems that the Guild is regularly improving upon, personal respiratory-protection devices that can be used in any situation are highly recommended when working in the shop:

Dust mask: Available at a variety of hardware stores, these masks are just disposable cloth with an elastic band. Some of the better ones have an



exhalation valve on the front. They're better than

nothing, but the serious woodworker would probably do best to find a solution that is more efficient and form-fitting than these disposable products.

Respirator: A step up from a simple dust mask is a half-mask respirator, which filters airborne particles with fairly good efficiency and have replaceable filter pad(s) that can be swapped out when they



get clogged, saving money in the long run. One advantage of these units is that they are made of flexible rubber, which forms a much better seal than cloth/paper masks. A good example is 3M's 6500 Series Respirator with their 2097 P100 Particulate Filters. I bought mine online for less than \$40 total. This model also accommodates optional filter elements to filter out solvents and other chemicals when applying wood finishes in enclosed areas.

So think long-term about your woodworking safety; learn more from **Chris Fry on September 19**; and breathe easier for a lifetime!

Thank you for your Focus on Safety!

John Sloss
Director of
Safety



SEPTEMBER 2018 INTERESTING VIDEOS....

YouTube and other video sites are great resources for woodworkers, here are a few presented in no particular order. Each of these videos caught my or other's eye for various particular reasons, be it the education, the project, or the film itself. If you run across interesting videos, please send a link to me at Library@kcwoodworkersguild.org

Did you know that the Guild has a YouTube channel? There's a few videos up that show off the guild and some old show and tell videos. Take a look: <https://www.youtube.com/user/kcwoodworkers/> And these videos are also linked on a playlist on our channel if you don't care to click each one in turn. Go to <https://www.youtube.com/user/kcwoodworkers/playlists> for all of the playlists or <https://www.youtube.com/playlist?list=PLBJ2WU6f8JOXkEUinghoWdc-zvTBQ5F94> for this month's list...Enjoy!

Version 3 DIY Circular Saw Crosscut & Router Jig

<https://www.youtube.com/watch?v=N1-Pxik-u4U>
Runtime 12 Minutes --- A really interesting take on a crosscut jig for the circular saw. I especially like the clear explanations and videography. This would be a great project if you don't have a chopsaw (and don't want one). He also has little popups that show where he's at in the project and plans available. I know I'm somewhat tempted to make it - my miter saw does take up a lot of room.... This video comes courtesy of Russ who decided to email this video!

Better Glue Ups with Clamping Cauls / Caul Gluing Clamps

<https://www.youtube.com/watch?v=OZ53CF7Gb1s>
Runtime 7 Minutes --- Colin tackles a useful glue up technique - especially if your clamp selection is limited and you have a wide panel to glue. Not only does he go about how to make the boards but also demonstrates various uses. Highland woodworking has an in depth article about the physics of cauls, if

you're curious -<https://www.highlandwoodworking.com/woodnews/2010april/cauls.html>



By Andrew Carr

Make these COOL 3-D Scroll Saw Candle Holders

<https://www.youtube.com/watch?v=ozJVRAvDyec>
Runtime 7 Minutes --- Reaganite71 take us through how to make a 3D project on the scroll saw that's relatively simple. He goes through each step and explains the steps clearly. I think once you get a few simple projects down with the scroll saw, this would be a good project to branch your skills out on. If you've never stopped into the Scrollsaw SIG, they meet every 2nd Wednesday at 7pm. (Although I am curious about the tray he has that he uses during finishing....)

How to make cornhole boards

<https://www.youtube.com/watch?v=18kucue70UQ>
Runtime 7 Minutes --- Bob shows off how to make some simple cornhole boards for the yard game. With tailgating season upon us, this would be a great weekend project when our local sportsball team takes on their old rivals, the rival sportsball team! I will note that Bob doesn't make regulation cornhole boards. Yes, some people take yard games a bit too far.

Building a SUPER JENGA game with carry crate

<https://www.youtube.com/watch?v=2m4kz0uizSM>
Runtime 5 Minutes --- Speaking of yard games, here's another - giant sized jenga. It's pretty simple to make, just repetitive. It's pretty simple to make, just repetitive. It's pretty simple to make, just... wait, what was I saying? Rowdy Penguin also makes a carrying crate for the game but... if you're in the market for a carrying type crate, this looks pretty strong. No need to just use it for 56 blocks that you setup and try not to tip over. I know I saw a member making one of these this month in the shop - just remember to account for our machine limitations before cutting the pieces to size!

NUMBER FIVE AND COUNTING by Ron Haw

This September issue of the guild's Wood Words newsletter will be the fifth monthly edition where I have been either the acting editor or the "official" editor. I can honestly say this has been one of the most enjoyable experiences that I have had as a member of the guild.

To those who have taken the time to comment on the design changes or content changes we've injected, it is with considerable humility that those of us on the newsletter staff thank you and sincerely appreciate your

comments. You'll notice the outward expression of my appreciation by the new larger sized hat that I've taken to wearing recently.

But, in all honesty, this is not my newsletter, it is your publication and is the Kansas City Woodworkers Guild's representative to the community where the guild resides. I ask that you consider helping by contributing to the newsletter. We can use your comments, ideas, technique tips, jig designs, safety tips and suggestions, and just about any contribution that

promotes our hobby.

Earlier this month you probably will recall that you received an email that announced the upcoming deadline for newsletter contributions. You can expect that notification every month going forward. Remember, as was pointed out, this is your newsletter and you cannot be expected to contribute if you don't know when that contribution needs to be in our hands. So step up, offer your thoughts and please share and pass on your woodworking skills.



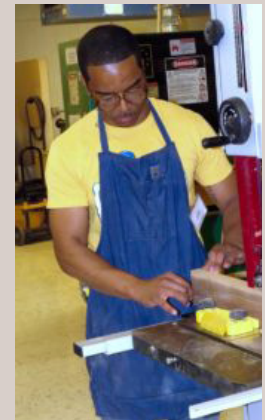
Rough to Ready

A Basic Hands-on Introduction to Woodworking

This class instructs you in the basic techniques and provides the hands-on experience of using table saws, router table, jointer, planer, bandsaw, wide belt sander, miter saw, some good ol' sandpaper as well as various squares and measuring tools. It serves as the only alternative method to satisfy the KCWG'S safety requirements and earn the required Safety Certification necessary to work in the Guild's shops.

This is the perfect one-on-one or one-on-two class for beginners, novices, even as a refresher for experienced woodworkers to build a 9in x 5in x 3 1/2in lidded box with an experienced instructor. Beginning with rough cut lumber your class will progress step by step to create a lidded box, glued up and ready to take home and apply finish after only minor sanding.

All that's required to take the Rough to Ready class is a paid up Sawdust Maker, Woodworker Plus or Benefactor Membership, a completed and passed Online Safety Test (90% passing grade) and your paid tuition for the class. Sign up is simple, just follow this link: <https://www.signupgenius.com/go/20f0b4ca4ac2ea4fb6-rough>.



We currently have class openings on the following dates, first-come-first-served: September 24, October 4, 5, 14, 15, 26, 28 and November 2, 4, 9, 16 and 19. Classes fill up fast and you don't want to miss out.

SEPTEMBER WOODCARVING SIG



Some confusion has come up regarding our meeting night. We meet the 4th Tuesday of the month, not the Tuesday following the Guild meeting. Sometimes it falls that way, other times it does not. Meeting times start at 6PM

and end at 8PM.

We have been busy with several projects over the past few months and have several people that have come in and started projects. Problem is, several of them have mentioned that those projects are in varying degrees of completion.

Our September meeting is dedicated to anyone that has an incomplete carving to come in and we will work on finishing them up, so bring any carving in that needs some attention, whether it was something we worked on

or not. Everyone is welcome.

We started working on carving spoons in August and will continue to work in those as it takes a little time to complete a project. For those that would like to learn spoon carving, we will have some blanks available for purchase, cost is \$3.00 to \$5.00 depending on size. For those that don't have tools, don't let that stop you, we have some available for use.

We look forward to seeing new faces, feel free to stop in and visit!

MEMBER PROJECTS



Boyko Varney

Hooper's Cat Boat

*Materials: Veneer, MDF,
Poplar*

Finish: Laquer and Shellac

*Points of Interest: Marquetry
banding, Woodburning*

**Photos Courtesy
Neal Ray Shoger**

SPONSORSHIP SUPPORT SO HARD TO GET...EASY TO LOSE

Guild Sponsorship is only successful when it is mutually beneficial – for our members and our Sponsors.

We get the benefit of our Sponsors dues and donations. That money or the value of those donations (such as those for the general membership meeting raffle) offset costs we members would otherwise HAVE to pay. We also get the benefit of the discounts our Sponsors give our members. And, even if a Sponsor cannot offer a discount in some cases, it makes good sense to buy from Sponsors who help pay for your Guild.

As you gear up to make items for the holidays, you

need supplies (lumber and hardware) and tools (that specialty router bit) and services (sharpening that dull planer cutter head). Make it automatic that you FIRST contact a Guild Sponsor to make those purchases. Are you running a Guild class soon? Our Sponsor list should be your bidder list for materials and supplies needed for the class.

I have been using [smile. Amazon.com](#) and directing the donations to the Kansas City Woodworkers Guild. Have you? So easy! And, NO WORRIES. I have not run into any item yet that could not be bought through the “smile” program. Last month I bought an odd sized

trailer tire inner tube, some refrigerator water filters and shaving soap without a hitch. USE IT every time you buy through Amazon.

And, when other non-members talk to you about a potential purchase, be courteous to our Sponsors and your Guild. Point them toward our Sponsors. Point them toward [amazon.smile.com](#) and make sure they know to designate KCWG for those Amazon donations.

By Denny
Walton
Director of
Sponsorship



*William Johnston
Rocking Chair*

MEMBER PROJECTS

**Photo Courtesy
Neal Ray Shoger**

SUPPORT THE SPONSORS OF THE KANSAS CITY WOODWORKERS GUILD



COUPONS.COM



Silk Road Travelers

Where the ancient path of harmony leads to the heart and soul of your home.



David Roth Woodwork
913-481-9016



Marquetry by Night
chefroth@everestkc.net

WOODCRAFT

Helping You Make Wood Work®

AMERICAN WALNUT CO.



Katalyst

GROUP, INC.

MIRKA

STRASSER HARDWARE

WOODLINE USA

Van-Ton Machine Specialties



Phillips Safety Products, Inc.



Superior Grinding

5315 Raytown Road
Raytown, MO 64133
816.561.8665

superiorgrinding@sbcglobal.net

Bring your blades
Show your valid KCWG Membership Card
and receive 20% off your services



Neal Ray's Photography



Bloomers



BEAVER TIMBER

Tom The Sawyer

Portable Sawmill Service
TomTheSawyer.net

Hardwoods

Schutte LUMBER CO.

Since 1880



Wood Haven, In

Siding Decking Millwork

INSTRUCTOR BECOMES STUDENT

I had a chance to sign up for a class this month. As many of you know this is sometimes not an easy feat in the Kansas City Woodworkers Guild. Some of our classes fill up so fast that if you are absent minded like me, you will miss the window of opportunity to become enrolled before the class is full. I think there are many reasons for the popularity of the class. First is value. There are some great opportunities to learn and make things that you wouldn't know how to make. Most classes allow you to complete a project and learn some new skills along the way while a few classes focus only on the skills that you can take away and apply to something that appeals to you. I would say that the next reason our classes fill up so quickly is that they appeal to us as woodworkers. Mike and I often find guild members doing something in the shop and we say, I'd like to learn how to do that. This often leads to a class. Other times a guild member would approach us with an idea for a class that they would like to take and we figure out how to make that happen. Quality would be the next reason for the class popularity. I marvel at the level of instruction that we offer considering that most of our instructors come from

our membership. I see classes that show that a great deal of preparation was done, breaking down the steps into a sequence that allows students to easily follow along, notes and jigs prepared for students to read and use, even specialty tools provided (sometimes to take home after class!) that a student would need for the project. Our instructors do a great job and I am thrilled that our guild has these members who are willing to share their knowledge with all of us.

The class I recently took was the basic inlay class. Great five hours of instruction and this was one of those skill only classes. It was a great deal of fun to do this. Almost like making your own puzzle as you also try to fit the pieces together. I learned a bunch and picked up quite a few more skills to apply to some future projects. Great planning, prepared material, and some great shared knowledge made this class valuable. I think a great follow on class to this would be making your own inlay banding. I did do one thing though that made me a bad student. I used a technique that I was comfortable using and not the one suggested by the teaching staff. I guess that it is only human nature, but I should have taken the opportunity to try

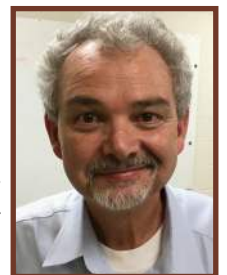
their method and learn a new way to do something. I paid the price too. The very next day I was working on a project that required that very same skill and I had to apply it without the benefit of an instructor's eye to guide me and help me be better, faster.

If you do get a chance to take a class, be sure to pass along a thank you to your instructor(s). Only a few accept a fee for teaching the class and they put in a lot of time outside of class doing all the prep work in order to make the class such a success. A simple thank you goes a long way for these people.

Our goal is 50 classes this year. I think we are getting close, but Mike McCauley and I will keep on working to bring you some great classes for the rest of this year. If you have anything in mind that you want to learn to do, please let us know. We will do our best to make it happen.

Here's to sharp tools, safe woodworking habits, and fun projects,

Happy
Sawdust,
Norm
Carpenter
Director of
Training



Bloomers



Hardwoods

Offered Services

- Log Milling
- Custom Drying 20,000 bf
- Planing
- Straight lining
- Glued Panels
- Wide Belt Sanding
- Profile Replication
- Custom Moulding
- Template matching of existing pattern

Products Available at Bloomer Hardwoods

- Ash 4/4 & 8/4
- Cedar Aromatic
- 4/4, 8/4, & 12/4
- Cherry 4/4, 8/4 & 12/4
- Maple 4/4
- Pecan 4/4 & 8/4
- Red Oak 4/4 & 8/4
- Walnut 4/4 & 8/4
- White Oak 4/4
- Plywood for Cabinets
- And many other Local Hardwoods

Phone: 816.330.3596

13585 45 Highway, Platte City, MO 64079

Hours: MONDAY - FRIDAY 8:30AM - 4:30PM

CNC UPGRADE

Here's the good news. The CNC is no longer in the



shop; it's out for the upgrade.

Here's the bad news. The hope was to have it back for the September 26th SIG meeting. After reviewing all the changes that need to be made and the need to create documentation and training materials it became clear that the September date was not realistic. The new date is October 24th which is the normal

CNC SIG meeting, if the work gets done before that date we will let you know.



Gary Mielke

There will be no CNC SIG meeting in September.

I apologize for the inconvenience, but I believe the wait will be worth it.

POWER TOOL REPAIR AND RESTORATION SIG

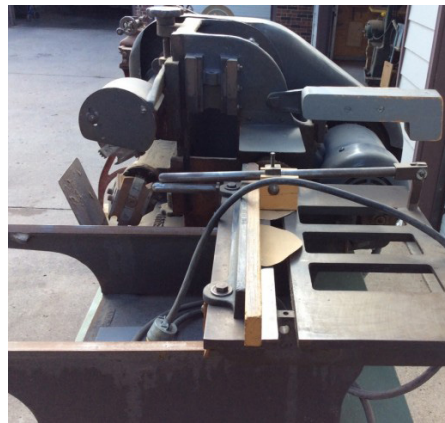
The time is near and like me I'm sure you are excited that it's time for Arnfest! Wait, you're



not excited? You've never heard of Arnfest? Arnfest is the real life face to face meeting of an online internet forum (owwm.org). This has nothing to do with *To Catch A Predator*. Arnfest is held at the *Illinois Railway Museum* in Union Ill.

Why am I telling you this? Because this year I will be

picking up my new acquisition the **Milbury BT112 Tenoner**. What makes this tool special? Well for one thing it is in good running condition



and has all of its accessories (including the original sales letter from Oliver Machinery), That's new for me. I will be the third owner. Why did I get this? Because it is a cool machine. What does it do? It cuts tenons on the end of your board (I thought that was obvious) Placing your

board on the sliding table you can then cut a tenon up to 2" thick, up to 5-1/2" wide and 2" long (in one pass) and cope the shoulder all by sliding the table forward. Makes the plant stand tenoning a cakewalk.

This machine will be the subject of our October meeting Sunday October 7th at 3:00-5:00pm

Future meetings - November 4th -- Electric Motors

The Power Tool SIG is like all SIGs free and open to all Guild members that have a green badge.

Hope to see
you there
Chuck
Saunders



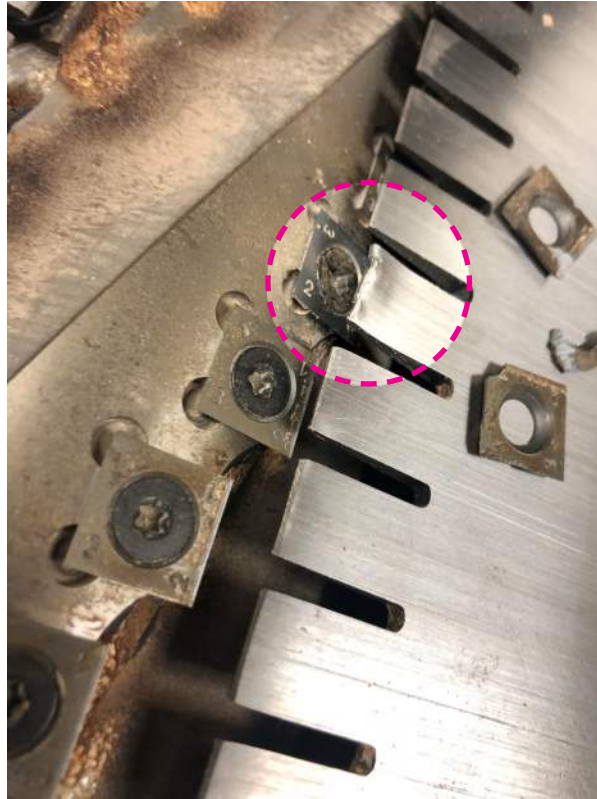
FROM THE SHOP

More Open Shop Time! We have added a significant amount of Open Shop time in the last month thanks to the generosity of our Shop Foremen. John Johnson has opened up the shop on the second Monday of the month at 9am, giving a full day up to the Turners meeting. Thanks to Roland taking Wednesday afternoon and Scott Engelman taking Wednesday nights along with Kevin Thomas and Roger Bartlett and Bob Caldwell, The shop is open 9:00am-9:00pm on Wednesdays, except of course for the third Wednesday (there is a meeting in the shop that night). Is there more? Yes there is! Mike McCauley is expanding third Fridays by opening up at 2:00pm and going until Marselle takes over at 6:00. There are fewer and fewer excuses for not having your project done in time for Christmas.

Here is a little known fun fact. Glue brushes don't clean themselves, who knew? Turns out that the practice of filling a coffee cup with water, dropping the metal handled glue brushes and walking away only results in a rusty glue brush and a icky coffee cup (Mmmm rusty coffee). Now I realize that cleaning a glue brush takes well over a minute and a half, but please, just clean the brush out.

As you can see from all of the Open Shop time, our shop gets a lot of use. It is good

that our membership has access to such a great facility as this and at a bargain price. Of course with usage comes wear and tear. There is expense involved with wear and tear and it is expected. All we ask is for the members to make an effort to avoid unnecessary damage. Sometimes though mishaps happen, we make



mistakes. That's why we have the SawStops so that some of those mistakes don't result in surgery. But mistake or accident or freak of nature, it happened on your watch, it's your responsibility. Your responsibility to inform the Shop Foreman on duty of the problem. Your responsibility to take the corrective instruction if warranted. Your responsibility to cover the cost of repair if warranted. The shop cannot operate if tools are broken and left for the next user to find out,

possibly with injurious effect. No different that cleaning up your mess and not leaving it for someone else. By making the Foreman aware of the problem we can keep the shop safe and operating without further damage. Here is a picture of our 16" jointer that the Shop Foreman discovered. I would find it hard to believe that the person operating the jointer did not notice when this happened. Do you?

By
Chuck
Saunders



IN REMEMBRANCE

James (Jim) Lee Stuart, 76, of Wichita, Kansas and formerly of West Branch, Iowa passed away, Friday, August 17, 2018 at the University of Iowa Hospitals and Clinics in Iowa City.

A celebration of Jim's life was held Sunday August 19, 2018 from 1 to 4 P.M. at Fawcett Pond, rural West Branch. A visitation with family and friends will be held Sunday, September 2, 2018 from 2 to 4 PM at the home of Kyle and Linda Stuart, 3114 N. Red Fox St, Wichita, Kansas 67205. Memorials may be made to Kansas City Woodworkers Guild, 3189 Mercier St., Kansas City, MO 64111. The Henderson-Barker Funeral Home in West Branch is in charge of arrangements. Online condolences may be made to the family at www.hendersonbarkerfuneralhome.com.

Jim was born January 25, 1942 the son of Kenneth and Lucille (Davis) Stuart. He attended West Branch School and graduated from City High School in Iowa City and attended the University of Iowa.

From 1959 until 1979 he was united in marriage to Martha (Fawcett) Luke, he later married Patricia (Collins) Stuart in 1981 and she survives. Jim had retired from sales at Proctor and Gamble where he had worked his entire career. He was a member of Ninnescah Yacht

Club west of Wichita and instrumental in its facility expansion and growth from 1974-1996 at which time Jim and Pat retired and moved to Beaver Lake in Northwest Arkansas. Later they relocated to the Kansas City area where he was extremely active in the Kansas City Woodworkers Guild crafting countless projects and assisting others. Jim loved sailing, woodworking, fixing things, helping others and above all else, his grandchildren.

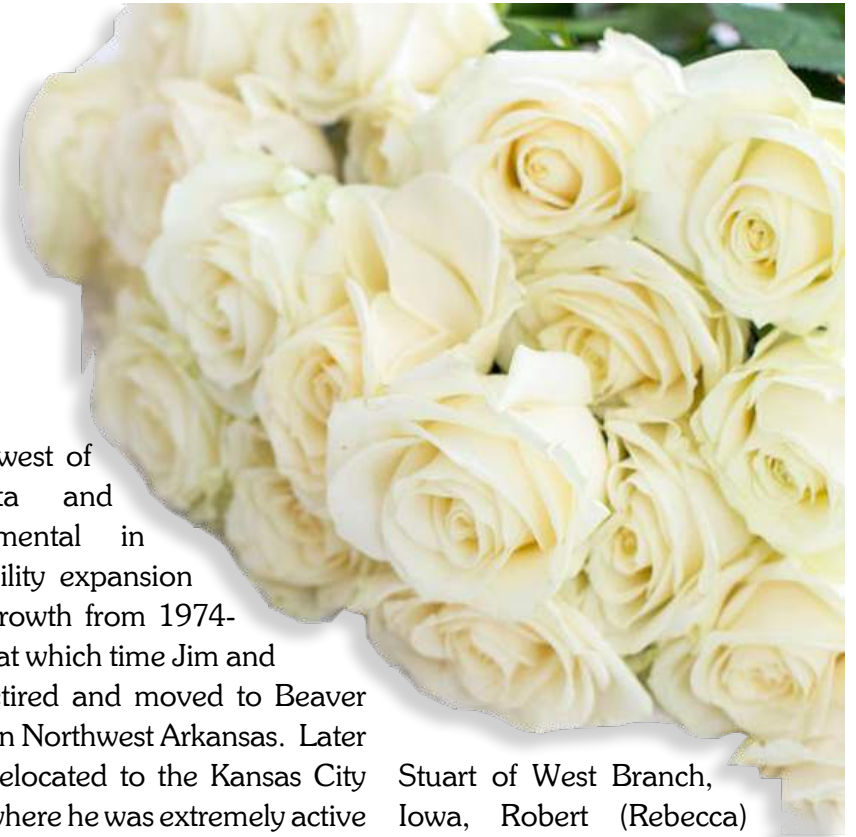
Survivors include his wife Patricia



Stuart of Wichita KS, children: Kendra Stuart of West Branch, Iowa, Kyle (Linda) Stuart of Wichita KS, Kent (MarKay)

Stuart of West Branch, Iowa, Robert (Rebecca) Williams of Wichita, Kansas, Matthew (Tricia) Williams of Southlake, Texas, Rebecca (Joel) McGill of Wichita, Kansas, Amy (Chris) Ringstaff of Austin, Texas. Grandchildren: Ashley (Truman), Adam, Lindsay (Daniel), Kaitlyn (Alex), Braden (Bailey), Zachary, Samantha, Kennedy, Trey, Reilee, Colton, Connor, Addison, Cooper, Avery, Georgia, Clara. Also surviving are Great Grand Children: Daniel, Soren, Finlay, Jensen and Jaden. His parents preceded him in death.

The family would like to thank the University of Iowa Hospitals, St. Luke's Rehab, Cedar Rapids and Select Care Specialty Hospital, Davenport for their loving care and treatment of our entire family over the past 7 months.



MEMBER PROJECTS



**Photo Courtesy
Neal Ray Shoger**

Greg Volkland

Cedar Chest

Materials: Oak, Western Cedar & Red Cedar

Finish: General Finishes Nutmeg Gel Stain Point of

Interest: Latch

Challenges: All



David Roth

MEMBER PROJECTS



Ken Grainger

Project: Bamboo Fly Rod

Materials: Bamboo

Finish: Shellac

**Photos Courtesy
Neal Ray Shoger**



Russ Amos

Project: Award Box

Materials: Walnut & White Oak

Finish: Tung Oil

Points of Interest: Mortis & Tenon Joints

Challenges: Mortis & Tenon Joints

PROPOSED BYLAW CHANGES

TO BE VOTED ON OCTOBER 17, 2018, AT THE MEMBERSHIP MEETING

Article III Members

2. Annual Meeting.

2.1. An annual meeting of the Members shall be held for the purpose of electing directors and officers and for the transaction of such other business as may come before the meeting. Unless otherwise specified by the Board of Directors, the annual meeting shall be held on the third Wednesday in April of each year, at a time and place to be designated the Board of Directors. At the annual meeting, the President and Treasurer of the Guild shall report on the activities and financial condition of the Guild.

11.1. It shall be the policy of the Guild to provide transparency to the Members. Subject to Section 11.2 and 11.3, a Member is entitled to inspect and copy, at a reasonable time and reasonable location specified by the Guild, the minutes of all meetings of its Members and Board of Directors, a record of all actions taken by the Members or directors without a meeting, a record of all actions taken by committees of the Board of Directors, financial statements of the Guild and documents required to be maintained at the principal office

of the corporation pursuant to R.S.Mo. §355.821.5. In addition to such records maintained pursuant to R.S.Mo. §355.821.5, a Member may request and examine such other documents and records maintained by the Guild as such Member may request. All reasonable requests for such documents or records shall be granted; however, the Board reserves the right to deny or limit a request if it determines such request was brought in bad faith or requests confidential information. If any such request is denied or limited, the Board shall provide to such Member a written explanation within five days of such request an explanation for such denial or limitation.

Article IV Board of Directors

1. Management

1.1. The affairs of the Guild shall be managed, supervised and controlled by a Board of Directors, consisting of five (5) persons. The Board of Directors shall include as director, one (1) Member-At-Large, who must have been an active and participating Member of the Guild for a minimum of five (5) years. Directors shall be elected by the Members in the manner specified in Article III hereof.

2. Term and Election of Directors

2.1. The full term of office of directors shall be two years and until their successors shall have been elected and qualified. All directors may be elected for a second term with a maximum of two consecutive terms holding the same office, unless a quorum vote is taken by the membership to allow a director to continue in their position. To the extent practicable, no more than three-fifths of the directors will be replaced in the same year. Where a vacancy occurs in the Board of Directors by reason of resignation, such vacancy may be filled by appointment of the directors then in office. The term of such appointment shall last until the next Annual Meeting of the Members where such position shall be filled by affirmative vote of a majority of the Members for the remaining unexpired term. Where a vacancy occurs in the Board of Directors by reason of removal, it shall be filled by the affirmative vote of a majority of the Members at a meeting of the Members at which a quorum is present; provided however, that such meeting called for the purpose of electing the director,

Continued on Next Page (23)

Continued from Previous Page (22)

and the notice of such meeting shall state the purpose, or one of the purposes, of the meeting is the election of the director for the unexpired term.

3. Removal and Resignation

3.1. Any director may resign at any time by giving written notice to the Board of Directors, the President or the Secretary of the Guild; unless otherwise specified therein, the acceptance of such resignation shall not be necessary to make it effective. Any director may be removed, with or without cause, by the affirmative vote of a majority of the Members at a meeting of the Members at which a quorum is present; provided, however, that a director may be removed by the Members only at a meeting called for the purpose of removing the director, and the notice of such meeting shall state the purpose, or one of the purposes, of the meeting is removal of the director. Any such resignation or removal shall take effect at the time specified therein.

4. Annual and Regular Meetings

4.1. The annual meeting of the Board of Directors shall be held each year immediately following the annual meeting of the Members of the Guild, and shall be held for the purpose

transacting such business as may come before the meeting. The Board of Directors may provide by resolution for holding additional regular meetings of the Board of Directors at any time and place.

ARTICLE V OFFICERS**1. Number and Election.**

1.1. Officers shall be elected by the Members at the Annual Meeting in the manner specified in Article III hereof and such officers shall consist of current Guild directors. The officers of the Guild shall be a President, a Vice President, a Secretary, and a Treasurer. The Board of Directors may also elect an Assistant Secretary and Assistant Treasurer. The full term of officer positions shall be two years and until their successors shall have been elected and qualified. All officers may be elected for a second term with a maximum of two consecutive terms holding the same office, unless a quorum vote is taken by the membership to allow an officer to continue in their position. Where a vacancy occurs in an office by reason of resignation, such vacancy may be filled by appointment of the directors then in office. The term of such appointment shall last until the next Annual Meeting of the Members where such position shall be filled by affirmative vote

of a majority of the Members for the remaining unexpired term. Where a vacancy occurs in an office by reason of removal, it shall be filled by the affirmative vote of a majority of the Members at a meeting of the Members at which a quorum is present; provided however, that such meeting called for the purpose of electing the officer, and the notice of such meeting shall state the purpose, or one of the purposes, of the meeting is the election of the officer for the unexpired term.

7. Removal and Resignation.

7.1. Any officer may resign at any time by giving written notice to the Board of Directors, the President or the Secretary of the Guild; unless otherwise specified therein, the acceptance of such resignation shall not be necessary to make it effective. Any officer may be removed, with or without cause, by the affirmative vote of a majority of the Members at a meeting of the Members at which a quorum is present; provided, however, that an officer may be removed by the Members only at a meeting called for the purpose of removing the officer, and the notice of such meeting shall state the purpose, or one of the purposes, of the meeting is removal of the officer. Any such resignation or removal shall take effect at the time specified therein.

CORRECTION:
 This chart was in August Wood Words, but as many folks have pointed out, the Less Than or Equal to Symbol was presented incorrectly.

Your editor apologizes for the error.

Suggested Maximum Router Bit Speeds

Bit Diameter	Maximum Speed
$\leq 1''$	24,000 rpm
1.25'' to 2''	18,000 rpm
2.25'' to 2.5''	16,000 rpm
3'' to 3.5''	12,000 rpm

Remember that these are **SUGGESTED** maximum speeds! Your equipment and/or situation could require much lower speeds for performance and safety!

Suggested Speed Chart Courtesy
The Rough to Ready Instructors

MEMBER PROJECTS



Ray Overton

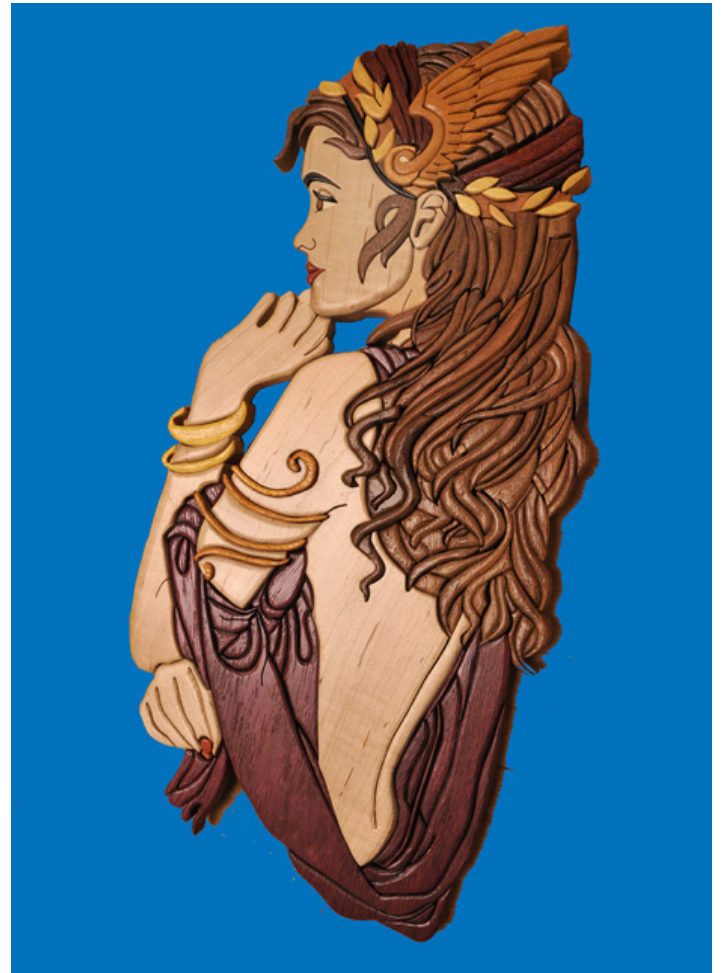
Intarsia

Materials: Maple, Walnut, Padauk, Purple Heart

Finish: Poly

Points of Interest: 2 years doing Intarsia

Challenges: Following lines when cutting



**Photos Courtesy
Neal Ray Shoger**



METRIC CONVERSION CHART

inches		
fractions	decimals	millimeters
1/32	.0313	.7938
	.0394	1
1/16	.0625	1.5875
	.0787	2
3/32	.0938	2.3813
	.1181	3
1/8	.125	3.175
5/32	.1563	3.9688
	.1575	4
3/16	.1875	4.7625
	.1969	5
7/32	.2188	5.5563
	.2362	6
1/4	.25	6.35
	.2756	7
9/32	.2813	7.1438
5/16	.3125	7.9375
	.315	8
11/32	.3438	8.7313
	.3543	9
3/8	.375	9.525
	.3937	10
13/32	.4063	10.3188
	.4331	11
7/16	.4375	11.1125
15/32	.4688	11.9063
	.4724	12
1/2	.5	12.7
	.5118	13
17/32	.5313	13.4938
	.5512	14
9/16	.5625	14.2875
	.5906	15
19/32	.5938	15.0813
5/8	.625	15.875
	.6299	16
21/32	.6563	16.6688
	.6693	17
11/16	.6875	17.4625
	.7087	18
23/32	.7188	18.2563
	.748	19
3/4	.75	19.05
25/32	.7813	19.8438
	.7874	20
13/16	.8125	20.6375
	.8268	21
27/32	.8438	21.4313
	.8661	22
7/8	.875	22.225
	.9055	23
29/32	.9063	23.0188
15/16	.9375	23.8125
	.9449	24
31/32	.9688	24.6063
	.9843	25
1	1	25.4
	1.0236	26
1 1/32	1.0313	26.1938
1 1/16	1.0625	26.9875
	1.063	27
1 3/32	1.0938	27.7813
	1.1024	28
1 1/8	1.125	28.575
	1.1417	29
1 5/32	1.1563	29.3688
	1.1811	30
1 3/16	1.1875	30.1625
1 7/32	1.2188	30.9563
	1.2205	31
1 1/4	1.25	31.75
	1.2598	32
1 9/32	1.2813	32.5438
	1.2992	33
1 5/16	1.3125	33.3375
	1.3386	34
1 11/32	1.3438	34.1313
1 3/8	1.375	34.925
	1.378	35
1 13/32	1.4063	35.7188
	1.4173	36
1 7/16	1.4375	36.5125

inches		
fractions	decimals	millimeters
	1.4567	37
1 15/32	1.4688	37.3063
1 31/64	1.4844	37.7031
	1.4961	38
1 1/2	1.5	38.1
1 17/32	1.5313	38.8938
	1.5354	39
1 9/16	1.5625	39.6875
	1.5748	40
1 19/32	1.5938	40.4813
	1.6142	41
1 5/8	1.625	41.275
	1.6535	42
1 21/32	1.6563	42.0688
1 11/16	1.6875	42.8625
	1.6929	43
1 23/32	1.7188	43.6563
	1.7323	44
1 3/4	1.75	44.45
	1.7717	45
1 25/32	1.7813	45.2438
	1.811	46
1 13/16	1.8125	46.0375
1 27/32	1.8438	46.8313
	1.8504	47
1 7/8	1.875	47.625
	1.8898	48
1 29/32	1.9063	48.4188
	1.9291	49
1 15/16	1.9375	49.2125
	1.9685	50
1 31/32	1.9688	50.0063
2	2	50.8
	2.0079	51
2 1/32	2.0313	51.5938
	2.0472	52
2 1/16	2.0625	52.3875
	2.0866	53
2 3/32	2.0938	53.1813
2 1/8	2.125	53.975
	2.126	54
2 5/32	2.1563	54.7688
	2.1654	55
2 3/16	2.1875	55.5625
	2.2047	56
2 7/32	2.2188	56.3563
	2.2441	57
2 1/4	2.25	57.15
2 9/32	2.2813	57.9438
	2.2835	58
2 5/16	2.3125	58.7375
	2.3228	59
2 11/32	2.3438	59.5313
	2.3622	60
2 3/8	2.375	60.325
	2.4016	61
2 13/32	2.4063	61.1188
2 7/16	2.4375	61.9125
	2.4409	62
2 15/32	2.4688	62.7063
	2.4803	63
2 1/2	2.5	63.5
	2.5197	64
2 17/32	2.5313	64.2938
	2.5591	65
2 9/16	2.5625	65.0875
2 19/32	2.5938	65.8813
	2.5984	66
2 5/8	2.625	66.675
	2.6378	67
2 21/32	2.6563	67.4688
	2.6772	68
2 11/16	2.6875	68.2625
	2.7165	69
2 23/32	2.7188	69.0563
2 3/4	2.75	69.85
	2.7559	70
2 25/32	2.7813	70.6438
	2.7953	71
2 13/16	2.8125	71.4375
	2.8346	72
2 27/32	2.8438	72.2313

inches		
fractions	decimals	millimeters
	2.874	73
2 7/8	2.875	73.025
2 29/32	2.9063	73.8188
	2.9134	74
2 15/16	2.9375	74.6125
	2.9528	75
2 31/32	2.9688	75.4063
	2.9921	76
3	3	76.2
3 1/32	3.0313	76.9938
	3.0315	77
3 1/16	3.0625	77.7875
	3.0709	78
3 3/32	3.0938	78.5813
	3.1102	79
3 1/8	3.125	79.375
	3.1496	80
	3.15	80.01
3 5/32	3.1563	80.1688
3 3/16	3.1875	80.9625
	3.189	81
3 7/32	3.2188	81.7563
	3.2283	82
3 1/4	3.25	82.55
	3.2677	83
3 9/32	3.2813	83.3438
	3.3071	84
3 5/16	3.3125	84.1375
3 11/32	3.3438	84.9313
	3.3465	85
3 3/8	3.375	85.725
	3.3858	86
3 13/32	3.4063	86.5188
	3.4252	87
3 7/16	3.4375	87.3125
	3.4646	88
3 15/32	3.4688	88.1063
3 1/2	3.5	88.9
	3.5039	89
3 17/32	3.5313	89.6938
	3.5433	90
3 9/16	3.5625	90.4875
	3.5827	91
3 19/32	3.5938	91.2813
	3.622	92
3 5/8	3.625	92.075
3 21/32	3.6563	92.8688
	3.6614	93
3 11/16	3.6875	93.6625
	3.7008	94
3 23/32	3.7188	94.4563
	3.7402	95
3 3/4	3.75	95.25
	3.7795	96
3 25/32	3.7813	96.0438
3 13/16	3.8125	96.8375
	3.8189	97
3 27/32	3.8438	97.6313
	3.8583	98
3 7/8	3.875	98.425
	3.8976	99
3 29/32	3.9063	99.2188
	3.937	100
3 15/16	3.9375	100.0125
3 31/32	3.9688	100.8063
	3.9764	101
4	4	101.6
	4.0157	102
	4.0551	103
4 1/16	4.0625	103.1875
	4.0945	104
4 1/8	4.125	104.775
	4.1339	105
	4.1732	106
4 3/16	4.1875	106.3625
	4.2126	107
4 1/4	4.25	107.95
	4.252	108
4 9/32	4.2813	108.7438
	4.2913	109
4 5/16	4.3125	109.5375
	4.3307	110

inches		
fractions	decimals	millimeters
	4.3701	111
4 3/8	4.375	111.125
	4.4094	112
4 7/16	4.4375	112.7125
	4.4488	113
	4.4882	114
4 1/2	4.5	114.3
	4.5276	115
4 9/16	4.5625	115.8875
	4.5669	116
	4.6063	117
4 5/8	4.625	117.475
	4.6457	118
	4.685	119
4 11/16	4.6875	119.0625
	4.7244	120
4 3/4	4.75	120.65
	4.7638	121
	4.8031	122
4 13/16	4.8125	122.2375
	4.8425	123
4 7/8	4.875	123.825
	4.8819	124
	4.9213	125
4 15/16	4.9375	125.4125
	4.9606	126
5	5	127
	5.0394	128
5 1/16	5.0625	128.5875
	5.0787	129
	5.1181	130
5 1/8	5.125	130.175
5 3/16	5.1875	131.7625
5 1/4	5.25	133.35
5 5/16	5.3125	134.9375
5 3/8	5.375	136.525
5 7/16	5.4375	138.1125
5 1/2	5.5	139.7
	5.5118	140
5 9/16	5.5625	141.2875
5 5/8	5.625	142.875
5 11/16	5.6875	144.4625
5 3/4	5.75	146.05
5 13/16	5.8125	147.6375
5 7/8	5.875	149.225
	5.9055	150
5 15/16	5.9375	150.8125
6	6	152.4
6 1/8	6.125	155.575
	6.1417	156
6 1/4	6.25	158.75
	6.2992	160
6 3/8	6.375	161.925
6 1/2	6.5	165.1
6 5/8	6.625	168.275
	6.6929	170
6 3/4	6.75	171.45
6 7/8	6.875	174.625
7	7	177.8
	7.0866	180
7 1/8	7.125	180.975
7 1/4	7.25	184.15
7 3/8	7.375	187.325
	7.4803	190
7 1/2	7.5	190.5
7 5/8	7.625	193.675
7 3/4	7.75	196.85
	7.874	200
7 7/8	7.875	200.025
8	8	203.2
8 1/4	8.25	209.55
	8.2677	210
8 1/2	8.5	215.9
	8.6614	220
8 3/4	8.75	222.25
9	9	228.6
	9.0551	230
9 1/4	9.25	234.95
	9.4488	240
9 1/2	9.5	241.3
9 3/4	9.75	247.65
	9.8425	250
10	10	254

SEPTEMBER OPEN SHOP SCHEDULE

day	September	Date	9am	10	11	12	1	2	3	4	5	6	7	8	9pm
Saturday	September	1	Mike Jones						Basic Skills Class		George Rexroad				
Sunday	September	2		Chuck Saunders					Chris McCauley Powertool SIG						
Monday	September	3						Ron Haw				Gary Strohm			
Tuesday	September	4	Gary Creek			Craig Arnold							Kara Paris		
Wednesday	September	5	Roger Bartlett				Roland Mohler		Scott Engelmann 3:30			LC Meeting			
Thursday	September	6	Gary Mielke										Bandsaw Box Class		
Friday	September	7											Andrew Carr Bandsaw Box Class		
Saturday	September	8	Dave Kraatz				Norm Carpenter								
Sunday	September	9		Rob Young						Mark Waugh					
Monday	September	10	John Johnson				Ron Haw						Woodturners General Meeting		
Tuesday	September	11	Matt Nowak			Ron Lomax			Craig Arnold				Rick Chandler Safety Comm Mtg		
Wednesday	September	12	Bob Caldwell				Roland Mohler		Scott Engelmann 3:30				Scrollsaw SIG		
Thursday	September	13	Gary Mielke										Basic Woodworking		
Friday	September	14											Bill Lintner		
Saturday	September	15	Dave Kraatz							George Rexroad					
Sunday	September	16		Chuck Saunders					Chris McCauley Safety Orientation						
Monday	September	17						Ron Haw					Gary Strohm		
Tuesday	September	18	Gary Creek			Craig Arnold									
Wednesday	September	19	Roger Bartlett										General Meeting		
Thursday	September	20	Gary Mielke										Basic Woodworking		
Friday	September	21						Mike McCauley					Marselle Bredemeyer		
Saturday	September	22	Dave Kraatz Introduction to Scroll Saw												
Sunday	September	23		Rob Young				Handtool SIG		Wayne Peterson					
Monday	September	24						Ron Haw							
Tuesday	September	25	Matt Nowak			Ron Lomax			Craig Arnold				Rick Chandler Carving SIG		
Wednesday	September	26	Bob Caldwell				Roland Mohler		Scott Engelmann 3:30				Kevin Thomas CNC SIG		
Thursday	September	27	Gary Mielke										Basic Woodworking		
Friday	September	28											No Open Shop Building Shaker Oval Boxes		
Saturday	September	29	No Open Shop Building Shaker Oval Boxes												
Sunday	September	30		Rob Young Making Wooden Tools						Chris McCauley					

KCWG TENTATIVE - OCTOBER OPEN SHOP SCHEDULE

day	October	Date	9am	10	11	12	1	2	3	4	5	6	7	8	9pm
Monday	October	1						Ron Haw					Gary Strohm		
Tuesday	October	2	Gary Creek			Craig Arnold							Kara Paris		
Wednesday	October	3	Roger Bartlett				Roland Mohler		Scott Engelmann 3:30			LC Meeting			
Thursday	October	4	Gary Mielke									Basic Woodworking			
Friday	October	5										Andrew Carr			
Saturday	October	6	Mike Jones						Basic Skills Class		George Rexroad				
Sunday	October	7		Chuck Saunders					Chris McCauley Powertool SIG						
Monday	October	8	John Johnson				Ron Haw					Woodturners General Meeting			
Tuesday	October	9	Matt Nowak			Ron Lomax			Craig Arnold			Rick Chandler Safety Comm Mtg			
Wednesday	October	10	Bob Caldwell				Roland Mohler		Scott Engelmann 3:30			Scrollsaw SIG			
Thursday	October	11	Gary Mielke									Basic Woodworking			
Friday	October	12										Bill Lintner			
Saturday	October	13	Dave Kraatz Building Wooden Toys I				Norm Carpenter								
Sunday	October	14		Rob Young						Mark Waugh					
Monday	October	15						Ron Haw					Gary Strohm		
Tuesday	October	16	Gary Creek			Craig Arnold									
Wednesday	October	17	Roger Bartlett									General Meeting			
Thursday	October	18	Gary Mielke									Basic Woodworking			
Friday	October	19						Mike McCauley				Marselle Bredemeyer			
Saturday	October	20	Dave Kraatz Scroll Saw Class Thanksgiving Themed						Safety Orientation	George Rexroad					
Sunday	October	21		Chuck Saunders						Chris McCauley					
Monday	October	22						Ron Haw							
Tuesday	October	23	Matt Nowak			Ron Lomax			Craig Arnold			Rick Chandler Carving SIG			
Wednesday	October	24	Bob Caldwell				Roland Mohler		Scott Engelmann 3:30			Kevin Thomas CNC SIG			
Thursday	October	25	Gary Mielke									Basic Woodworking			
Friday	October	26										Bill Lintner			
Saturday	October	27	Dave Kraatz												
Sunday	October	28		Rob Young					Handtool SIG	Wayne Peterson					
Monday	October	29						Ron Haw							
Tuesday	October	30	Gary Creek			Craig Arnold						Rick Chandler			
Wednesday	October	31	Roger Bartlett				Roland Mohler		Scott Engelmann 3:30						

**NEXT
MEMBERSHIP
MEETING IS
SCHEDULED
FOR
SEPTEMBER 19
AT 7:00PM**

LEADERSHIP COMMITTEE MEMBERS

President:.....	Craig Arnold	president@kcwoodworkersguild.org
Vice-President:.....	Cal Hobbs	vicepresident@kcwoodworkersguild.org
Secretary:	Sharon Pugh	secretary@kcwoodworkersguild.org
Treasurer:	Gary Mielke	treasurer@kcwoodworkersguild.org
Member-at-Large:	Tim Locke	memberatlarge@kcwoodworkersguild.org
Director of Events:.....	Alex Scott.....	events@kcwoodworkersguild.org
Director of Membership:.....	Wayne Peterson.....	membership@kcwoodworkersguild.org
Director of Communication:..	Roya Souag	communication@kcwoodworkersguild.org
Director of Sponsorship:.....	Denny Walton.....	sponsorship@kcwoodworkersguild.org
Director of Training:	Norm Carpenter.....	training@kcwoodworkersguild.org
Director of Programs:	Matt Nowak.....	programs@kcwoodworkersguild.org
Director of Assets:.....	Chuck Saunders.....	assets@kcwoodworkersguild.org
Director of Safety:.....	John Sloss.....	safety@kcwoodworkersguild.org
Newsletter Editor:	Ron Haw	newsletter@kcwoodworkersguild.org
Web Master:	Open	webmaster@kcwoodworkersguild.org
Librarian:.....	Andrew Carr.....	library@kcwoodworkersguild.org

**VISIT THE KANSAS CITY WOODWORKERS GUILD
ONLINE AT**

www.kcwoodworkersguild.org

**Visit the
Kansas City Woodworkers
Guild at
3189 Mercier Street
Kansas City, Missouri**

