

# Kansas City Woodworkers' Guild

Increase your Woodworking skill and knowledge



**KCWG Sponsors**  
Check 'em out!

## Members News

### President's Corner

I am excited about where the Guild is going. Over the past several years, I have seen the Guild grow from 350 members to 629 members as of the at last count. And the shop has expanded to account for this influx. When I joined, we didn't have a single SawStop table saw - now we have 5, as well as many other new hand and power tools.

I believe that there are three main things that have contributed to the growth of the Guild: First is the comradery of the guild. We've all been made to feel welcome, and I know that we will continue to share this feeling with all who discover what a wonderful club we have. Second is the shop its self. We have a shop that is one of the best available for club usage in the nation. Third is a training program that attracts new

members and responds to their needs.

This growth is great, but with it comes responsibility. The Guild has always been an all-volunteer organization. Our recent growth has created opportunity for each of us to step up and help, and there are many opportunities for all to do so. We each have our own talents from teaching classes to helping with shop cleanup, and we can use help in those areas. Those that have stepped up into leadership roles can also use our help. They have each done a superb job in their respective areas, but they also have responsibilities outside of the Guild, and many would like the time to pursue their own woodworking projects. We like to keep in mind that those in leadership positions are actually with us because they, too, are

woodworkers.

The Guild growth has brought other changes. We have not kept up with not-for-profit law in Missouri. Consequently, the Board has begun working with an attorney to upgrade our bylaws to be compliant with current Missouri law. In the near future we will be updating the membership on these changes and giving you an opportunity to vote on new by-laws.

Thank you for your help as we continue to expand and grow. Have fun making sawdust!



### Hand Tool Sig—June 26; 2:00 - 4:00 PM—Topic: Beginning Inlay

This month the Hand Tool SIG will examine inlay techniques - tools and processes. This will be geared toward the beginner and will hopefully provide you with an idea of how to add some interest to your next project.



**Schutte Lumber**  
(816) 753-6262

**Woodcraft Supply**  
(913) 599-2800

**Metro Hardwoods, Inc.**  
(816) 373-1710

**Andre's Tearoom**  
5018 Main St  
Kansas City, MO 64112  
816-561-6484

**Eagle Jigs, L.L.C.**  
14221 Peterson Road  
Kansas City, MO 64149

**Santa Fe Glass** All six locations  
EVERYTHING IN GLASS  
800-371-4527

**Apollo Sprayers**  
[www.hvlp.com](http://www.hvlp.com)

**Strasser Hardware**  
(913) 236-5858

**Woodline**  
(800) 472-6950

**Cedar Creek Sawmill**  
(913) 638-1173

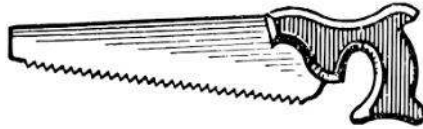
**Van-Ton** John Van Goethem  
913-631-1094

**Katalyst**  
GROUP INC.

**Tom The Sawyer**  
Portable  
Sawmill Service  
[www.TomTheSawyer.net](http://www.TomTheSawyer.net)

**SUPERIOR GRINDING LLC**  
KYLE ALEXANDER  
5315 BAYTOWN RD  
BAYTOWN, MO 64133  
OFFICE: 816-561-6665  
CELL: 913-638-2029  
FAX: 816-561-6666  
[kalex@superiorgrinding.com](mailto:kalex@superiorgrinding.com)  
[www.superiorgrinding.net](http://www.superiorgrinding.net)

## Membership



If you have a Green or Orange badge, please check the emergency information on the back of your badge and make sure it is current and up to date. This information can be vitally important if you need medical care and we would need to contact someone on your

behalf.

Also, we are missing many member phone numbers. If you would like to have your phone number published in the Membership Roster on the web and it's currently missing - drop an E-mail to [m a i l -](mailto:membership@kcwoodworkersguild.org)

[to:Membership@kcwoodworkersguild.org](mailto:membership@kcwoodworkersguild.org) and we will see that your number is included in the roster.

Wayne Peterson, Membership Director

## New Guild Sponsors—Cadex Tools

For over 18 years, Cadex has been dedicated to engineering and selling the highest quality pneumatic tools. A dedication to design, commitment to quality, and attention to detail have placed Cadex as a leader in the pneumatic market. A belief in building the highest quality tool that is engineered to work with you has driven Cadex to seamlessly integrate form and function, creating durable tools that not only work well, but look great too. Add to this several intuitive features that make every application easier and you have the essence and commitment of what Cadex is.

staplers and assorted other specialty tools.

Cadex donated two 23-gauge pin and brad nailers to the Guild.

### Make it Snappy Tools



Cadex specializes in fine finishing pneumatic tools (23 gauge, 21 gauge and 18 gauge). The company also carries a full range of upholstery tackers, packaging

Experience the higher quality of **Make it Snappy Tools**. Combining higher quality materials and patented technology. **Make it Snap-**

**py Tools** delivers industrial quality tools to the tradesman and do-it-yourself markets at an affordable price.

**Make it Snappy Tools** donated three set complete sets of countersink bits, hinge bit sets, and plug cutters.

Please remember to present your Guild membership card at our sponsors to receive your discount. Thank the sponsor for supporting the Guild.

If you do business with a company who should be a sponsor, please contact Craig Arnold, Sponsorship Director, at [sponsorship@kcwoodworkersguild.org](mailto:sponsorship@kcwoodworkersguild.org).

-Dick Kammer, Director of Communications



### JUNE SPECIALS

4/4 CHERRY S2SSLR TO 25/32"

\$3.69 BD FT

4/4 CYPRESS S2SSLR TO 25/32"

\$4.19 BD FT

4/4 HICKORY S2SSLR TO 25/32"

\$2.99 BD FT

4/4 WHITE OAK S2SSLR TO 25/32"

\$3.75 BD FT

8/4 BASSWOOD S2SSLR TO 1-3/4"

\$2.99 BD FT

MINI BOLT ACTION PEN KITS GOLD, CHROME & GUN METAL - \$8.75 EACH

\*\*\*\*\*

FATHER'S DAY SALE ON EASY WOOD TOOLS JUNE 4TH THROUGH JUNE 21 - 20% OFF REGULAR PRICE

\*\*\*\*\*

THURSDAY JUNE 2ND AT 3:00PM THE REP. FROM GENERAL FINISHES WILL BE HERE AT THE STORE FOR PRODUCT KNOWLEDGE CLASS IF ANYONE IS INTERESTED IN COMING TO IT.

\*\*\*\*\*

### STORE HOURS

MONDAY - FRIDAY - 9:30AM TO 6:30PM

SATURDAY - 9:00AM TO 4:00PM

SUNDAYS - CLOSED

\*\*\*\*\*

4243 SOUTH NOLAND ROAD INDEPENDENCE, MO. 64055 816-373-1710

## Kansas City Woodworkers' Guild

Increase your Woodworking skill and knowledge



## Around the Shop

The glue bottle says keep joint clamped at least 30 minutes before removing. That does not mean that the glue has completely dried. You need to let the glue dry/cure at least 24 hours or more before further processing.

There are several reasons for saying this:

- After 30 minutes the glue may hold the unstressed joint together but the glue has not dried/cured. Notice I said unstressed joint. Once you start sawing or otherwise working the wood you are stressing the joint and can induce glue joint failure.
- Sawing the joint will expose the blade to glue that is still wet and either gum up the blade or in the case of the Saw-Stop trigger the brake resulting in awarding you a pricey memento.
- Sanding into the still wet glue will gum up the sandpaper/belt/disc/sleeve.
- Planing or Jointing results in gummed

up cutter heads and tables.

Are you seeing a theme developing?

From the project point of view, aside from the risk of stressing the joint while not fully



cured, you have introduced water into the wood and the wood has swelled. Planing or sanding a joint that has not reached equilibrium can result in sunken or stepped joints and nobody wants that.

Then there's squeeze out. Glue should cover the entire joint with an even film (fingers make great spreaders). With proper clamping some squeeze out is proof that the joint had this proper film. The squeeze

out is your insurance.

Excessive glue will result in squeeze out that drips off of the work piece onto clamps and table/floor. First, this is a sign that you are using an excess of glue. Second, please clean up these drips, drops puddles and pools from the table/floor and especially the clamps. Remember that this is a shared shop and the next user of those clamps should not be cleaning up after you.

If you are using glue, it wouldn't hurt at all to drop off a bottle once and a while (hint, hint)..

-Chuck Saunders, Assets Director



## June Program: A Presentation from Cadex Tools, A Guild Commercial Sponsor

Please welcome our latest Sponsor, Cadex Tool! Grady Barrett of MH-Sales and our own Craig Arnold will be demonstrating the Cadex 23 gauge headless Pin/Brad nailer. An ideal tool for trim, mouldings, cabinetry, decorative work and all finishing and precision work. The nailer features

precision no-mar nose, swivel coupler, and is a balanced two pounds in weight. Try the donated nailer for yourself!

Product catalogs from Cadex Tool, Snappy Tool, and Titebond Adhesives will be available!



## An Outreach Opportunity

**T**here is an opportunity for 3 of our members to help with community outreach. We have been contacted and requested to provide 3 judges for the judging of the 4-H woodworking projects for the Clay County fair on July 7th. If you can help with this please contact me for details." -Roland Mohler, president

## Training News

**W**arning! Warning! Warning!!!!  
Warm, sunny, summer days go by quickly and the training class that you intended to sign up for happened last week. I know that is the case for some who wanted to build Shaker boxes with John Wilson or make a wooden hand plane.

There is good news. There are still some open spots for the Federal Table class and

the Stringing and Inlay Class with Freddy Roman scheduled for September. These will be outstanding classes to elevate your period furniture making skills, so don't miss the opportunity.

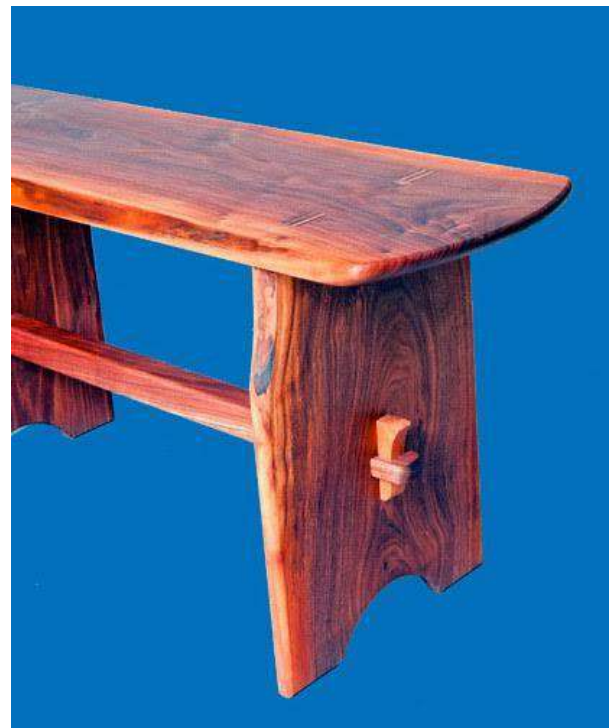
Please consult the Guild website, <http://kcwoodworkersguild.org/classes/>, for details and enrollment information on all of our classes.

-Dave Kraatz, Training Director



## Made By Members

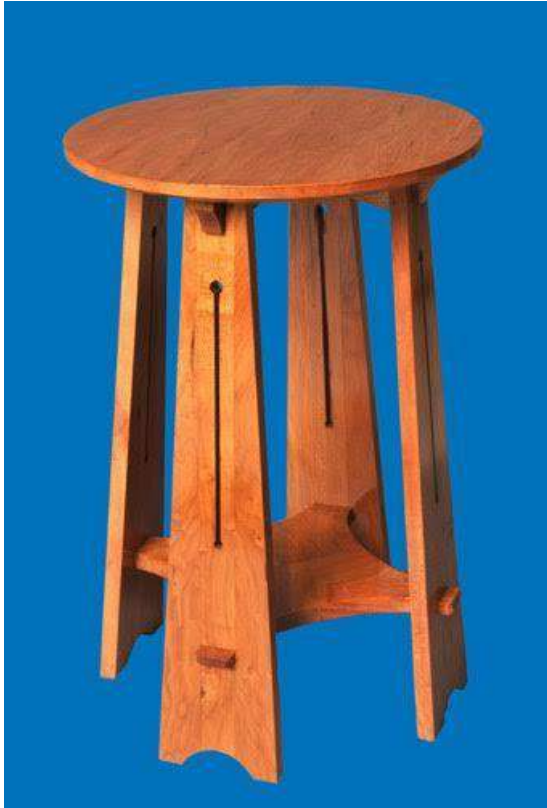
-Bill Lintner



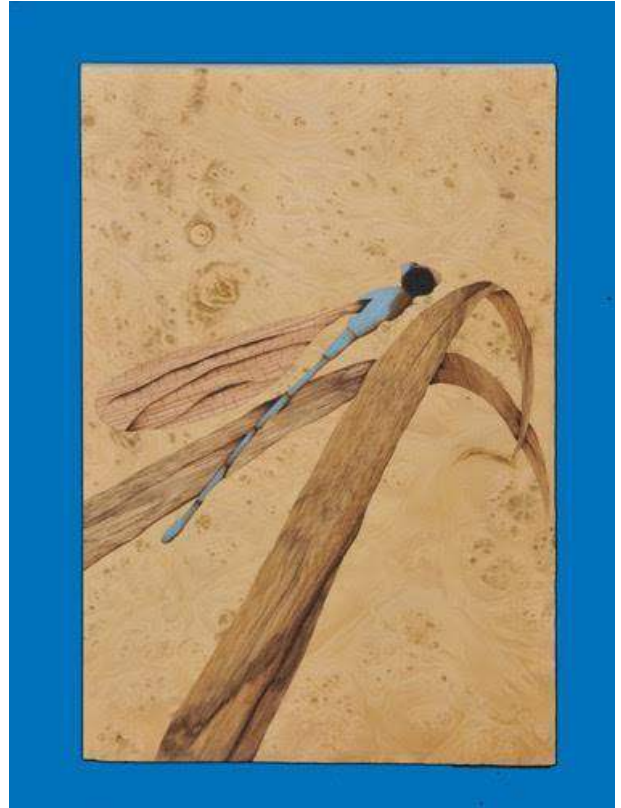


## Made By Members, Cont..

-Ken Grainger



-Mark Roth



-James Childress



## Made By Members, Cont..



-Darren Wright



-Andrew Mitchell



## Made By Members, Cont..



-Jay Hellend



-Boyko Varney



**Made By Members, Cont..**



**-Ted Wakeman**



**All Photos  
Courtesy Neal Ray Shoger**



**KCWG Open Shop Schedule for June 2016**

Hour Beginning	9	10	11	12	1	2	3	4	5	6	7	8	9
1 Wed, June 01	Roger Bartlett										LC Conference		
1 Thu, June 02	Gary Mielke											Basic Woodworking	
1 Fri, June 03										Andrew Carr			
1 Sat, June 04	Bill Lintner												
1 Sun, June 05		Chuck Saunders					Power Tool SIG						
Hour Beginning	9	10	11	12	1	2	3	4	5	6	7	8	9
2 Mon, June 06									Gary Strohm				
2 Tue, June 07	Jerry Thompson			Craig Arnold								Safety Committee	
2 Wed, June 08												Scroll Saw SIG	
2 Thu, June 09	Gary Mielke											Basic Woodworking	
2 Fri, June 10											Making Shaker Boxes		
2 Sat, June 11	Making Shaker Boxes - 8:00 a.m. - 6:00 p.m.												
2 Sun, June 12	Making Wood Tools - 8:00 a.m. - 4:00 p.m.												
2								Mark Waugh					
Hour Beginning	9	10	11	12	1	2	3	4	5	6	7	8	9
3 Mon, June 13												Woodturners	
3 Tue, June 14	Jim Suart			Ron Lomax			Craig Arnold				Roland Mohler		
3 Wed, June 15	Roger Bartlett											General Meeting	
3 Thu, June 16	Gary Mielke										Kevin Thomas		
3 "												Basic Woodworking	
3 Fri, June 17											Brad Swaters		
3 Sat, June 18	Bill Lintner												
3 "	Scroll Saw Class						Safety Orientation						
3 Sun, June 19		Chuck Saunders											
Hour Beginning	9	10	11	12	1	2	3	4	5	6	7	8	9
4 Mon, June 20										Gary Strohm			
4 Tue, June 21	Jerry Thompson			Craig Arnold									
4 Wed, June 22												CNC SIG 6:30	
4 Thu, June 23	Gary Mielke											Basic Woodworking	
4 Fri, June 24											David Kraatz		
4 Sat, June 25	David Kraatz												
4 Sun, June 26		Rob Young					Hand Tool SIG	Wayne Peteraon					
Hour Beginning	9	10	11	12	1	2	3	4	5	6	7	8	9
5 Mon, June 27													
5 Tue, June 28	Jim Suart			Ron Lomax			Craig Arnold				Roland Mohler		
5 "												Wood Carvers SIG	
5 Wed, June 29	Roger Bartlett												
5 Thu, June 30	Gary Mielke											Basic Woodworking	



# Kansas City Woodworkers' Guild

Increase your Woodworking skill and knowledge



June, 2016, No. 5

**Find Us : KC Woodworkers' Guild  
3189 Mercier  
Kansas City, MO 64111-3631**

Next General Meeting : June 15, 2016.

Find us on the Web at [www.kcwoodworkersguild.org](http://www.kcwoodworkersguild.org)

Have a suggestion for the Guild? Idea for a program, clinic, workshop? Contact us using the emails to the right.



**"There is only one thing that makes a dream impossible to achieve: the fear of failure."  
— Paulo Coelho**

Position	Name
President : <a href="mailto:president@kcwoodworkersguild.org">president@kcwoodworkersguild.org</a>	Chuck Saunders
Vice-President : <a href="mailto:vicepresident@kcwoodworkersguild.org">vicepresident@kcwoodworkersguild.org</a>	Roland Mahler
Secretary : <a href="mailto:secretary@kcwoodworkersguild.org">secretary@kcwoodworkersguild.org</a>	Sharon Pugh
Treasurer : <a href="mailto:treasurer@kcwoodworkersguild.org">treasurer@kcwoodworkersguild.org</a>	Gary Mielke
Member-at-Large : <a href="mailto:memberatlarge@kcwoodworkersguild.org">memberatlarge@kcwoodworkersguild.org</a>	Kevin Thomas
Director of Events : <a href="mailto:events@kcwoodworkersguild.org">events@kcwoodworkersguild.org</a>	Bill Lintner
Director of Membership : <a href="mailto:membership@kcwoodworkersguild.org">membership@kcwoodworkersguild.org</a>	George Rexroad
Director of Communication : <a href="mailto:communication@kcwoodworkersguild.org">communication@kcwoodworkersguild.org</a>	Dick Kammer
Director of Sponsorship : <a href="mailto:sponsorship@kcwoodworkersguild.org">sponsorship@kcwoodworkersguild.org</a>	Craig Arnold
Director of Training : <a href="mailto:training@kcwoodworkersguild.org">training@kcwoodworkersguild.org</a>	David Kraatz
Director of Programs : <a href="mailto:programs@kcwoodworkersguild.org">programs@kcwoodworkersguild.org</a>	Toby Liu
Director of Assets : <a href="mailto:assets@kcwoodworkersguild.org">assets@kcwoodworkersguild.org</a>	Erwin Kurtz
Director of Safety : <a href="mailto:safety@kcwoodworkersguild.org">safety@kcwoodworkersguild.org</a>	Chuck Slagle
Newsletter Editor : <a href="mailto:newsletter@kcwoodworkersguild.org">newsletter@kcwoodworkersguild.org</a>	Brandon Mason
Web Master : <a href="mailto:webmaster@kcwoodworkersguild.org">webmaster@kcwoodworkersguild.org</a>	
Librarian : <a href="mailto:library@kcwoodworkersguild.org">library@kcwoodworkersguild.org</a>	John McKee
Historian : <a href="mailto:g.creek@att.net">g.creek@att.net</a>	Ann Creek