

# Kansas City Woodworkers' Guild

Increase your Woodworking skill and knowledge




## Wood Words

### President's Corner

Welcome to March and the faint promise of Spring. I pause to reflect as we approach our 4th anniversary in our present location. At this time in 2011 the shop was a colder, darker and more strangely scented place than it is now. I remember the many hours of work put in to making this shop ready to move in by Jack Gregg, Tim Locke, Jim Bany, Ron Lomax and Bud Schenke to name but a very few. But there is one name that has had more to do with making our shop what it is than I believe anyone else, and one that our many new members know nothing about, and that name is Cliff Bell.

Cliff decided that the Guild was going to be something big and he was going to make it so. As Director of Membership he told the Leadership committee that he was going to double the Guild membership that year. A lofty claim considering that the Guild had roughly 70-100 members consistently for the past 20 or so years. At the end of that year the Guild had doubled its membership and satisfied Cliff announced that he was going to double it again in the coming year, and he did. Cliff headed up the

first joint Guild-WoodTurners Auction and through giving Jerry Jennings woodworking magazines and telling him to call everyone with an ad and ask for a donation, responding to every Craigslist tool ad asking if they had considered donating their tool to the Guild instead and constant emails reminding members that they needed to clean out their shops and donate to the auction. The auction that year filled the shop and parking lot with 1500 lots and raised over \$15000. There were more radial arm saws than you could imagine.

When we had to find our new space, Cliff and Jack visited every commercial piece of real estate near I-35 from Olathe to downtown before finding our current home. Cliff spent no more than 20 hours a day working on growing and promoting the Guild and I cannot imagine where we would be if he were alive today, but it would be impressive. Cliff passed away shortly before we officially started meeting here and his memorial service was the last gathering we had at our old location in Merriam a fitting farewell to both.

In the void that was left the Leadership Committee members had to redistribute all of the tasks back to the Directors that Cliff had taken on in his tenure as he was a "if you won't help, at least get out of my way" kind of guy. Today the Guild has close to 500 members and a pretty darn nice space and a lot of that is thanks to Cliff Bell and is why the Contributor of the Year award was renamed the Clifford W. Bell Contributor of the Year award.

There are many Cliff Bell stories and no, he was not a saint, but everything he did no matter how brash, or bold was always with the best interests of the Guild at heart. To keep the newsletter from being 50-60 pages long I will refrain from sharing my favorite stories.

All it takes is for people to get involved and support the Guild. This is a volunteer organization that has been built entirely by those many volunteer members.

My Thanks to all of you,  
— Chuck Saunders

### Next General Meeting : March 18th, 7:00pm KCWG Shop Program: Award Winning Wood Carver, Dan Robidoux

KCWG member Dan Robidoux has focused on woodcarving for many years and is a "high-end" decorative bird carver. He has won numerous awards and sold his work throughout the United States. Although mostly self taught he has received training from world-class carvers.

Dan will bring examples of his work to March's regular monthly meeting

where he will review the process involved in decorative bird carving as our featured speaker.

A strong believer in training, practice, and commitment if one is to master any area of woodworking, Dan will be talking about creative thinking, visualizing, and planning, as key elements in achieving pleasing results.

Please come prepared to enjoy Dan's presentation and see his work.

— Cliff Schuette  
April Preview : Cal Hobbs on Handcut Dovetails




**Schutte Lumber**  
(816) 753-6262

**Woodcraft Supply**  
(913) 599-2800

**Metro Hardwoods, Inc.**  
(816) 373-1710

**American Grinding & Sales**  
(816) 561-1776

**Overland Tool, Inc.**  
7905 Nieman Road, 66214  
913-599-4044

**Merit Industries**  
913-371-4441 or  
800-856-4441

**All six locations**  
800-371-4527

**Apollo Sprayers**  
[www.hvlp.com](http://www.hvlp.com)

**Strasser Hardware**  
(913) 236-5858

**Woodline**  
(800) 472-6950

**Cedar Creek Sawmill**  
(913) 638-1173

**Custom Woods LLC**  
1-800-BUNKBED  
[www.1800bunkbedkc.webs](http://www.1800bunkbedkc.webs)

**Andre's Tearoom**  
5018 Main St  
Kansas City, MO 64112  
816-561-6484

**Eagle Jigs, L.L.C.**  
14221 Peterson Road  
Kansas City, MO 64149

**Van-Ton**  
John Van Goethem  
913-631-1094

**White Crane Images**  
Neal Shoger  
(816) 781-4000

**Tom The Sawyer**  
Portable Sawmill Service  
[www.TomTheSawyer.net](http://www.TomTheSawyer.net)

Find more sponsors inside!



**Guild History Wanted!**

**I am requesting all past Presidents of the KCWG to email me with their dates of service. I wish to contact all for interviews. Any member with KCWG historical information is also encouraged to email or call me.**

**— Ann Creek, KCWG Historian**

[g.creek@att.net](mailto:g.creek@att.net)

**(913) 449-3377**

## Guild Training Notes From the Blackboard

As we shared with you in the last email blast, there is a lot going on with training here at the Guild.

We have filled our 3rd installment of Intro to Woodturning with Anthony Harris, which will take us into July. We hope to develop some advanced turning classes for those who have ventured beyond the intro level or for those who have some wood turning under their belts. Anthony is working on those details and we will announce when those classes are on the calendar.

I will be teaching the class on Building your own Router Table in June. It looks like we will do this the second Saturday of June, which is June 13th, from 9-4. Hopefully, by the end of that class, you will have the table done or at least close enough that you can load it up and take it home to assemble it at home. The cost for this class is \$160. We will limit the class to 6, so you will want to sign up and pay as soon as possible. Start thinking about what you want to accessorize your table with, i.e., lift, shut off switch, enclosure, dust collection, etc. I will send plans to those who sign up.

Make sure you set aside some time in September for the WIA (Woodworking in America) put on by Popular Woodworking. As many of you know, there are some All-Star presenters that are on the calendar for that event. One of their big names is

David Marks. David has agreed to come early or stay past the WIA to do a class at the Guild on Gilding and Patination. This is going to be a very interesting class and happens to be one of the topics that David will also be teaching at the WIA. We are working out the details of the exact dates, but rest assured, this will be a great workshop to participate in. Keep your eyes on the newsletter and your email inbox for more details in the coming months.

As soon as we wrap up NCIOI in early May, Rob Young has told me he wants that Thursday evening slot to offer an advanced Hand Tool Workshop. Many of you have enjoyed Rob's Hand Tool Preschool and the Shaker Candle Box class, so you can imagine what Rob will have going on in this new class. Details are being worked out so watch for the announcement in your inbox.

We are still working out the details to host a workshop with Scott Meeks on building Krenov-style wooden hand planes. Many of you saw Scott's handiwork at the Lie-Nielsen event, so you know the level of work that will be taking place. Regardless of your skill level, you really should plan on taking advantage of this opportunity. Again, keep an eye on your inbox and the newsletter for more information on fees, dates, etc.

This is also a good place to make you aware of the fact that each month, we will

be holding our safety orientations on Saturdays, starting at 2:30. This means that those particular Saturdays will have a shorter Open Shop time due to the safety orientation class. Make sure to keep an eye on the open shop calendar so you know in advance when those dates occur. We will close down open shop promptly at 2:15 in order to have things cleaned up and ready for the Safety Orientation.

For those of you building cutting boards, you might want to think about also building a nice knife for use on that cutting board. If I get enough of you interested, I will do a class on knife making sometime in July or August. Let me know if you are interested in taking this class.

As always, I want to hear from YOU, the members, on things you want to have in the way of training. Your ideas and input are always welcomed and encouraged.

I hope to see you in the shop!

— Mike Jones

## Membership Renewal Reminder

### HAVE YOU RENEWED YOUR Membership FOR 2015?

Time is running out! At the end of March the grace period is over and you lose your membership. If you want to renew after March you are treated as a new member, required to take the safety test and attend a safety orientation to get your green card. You can renew by going to the Guild web site and use PayPal or you can send a check to the Guild.

The address is:

KC Woodworkers Guild  
C/O Membership  
3189 Mercier St.  
Kansas City, MO 64111

You can also renew at the Guild with check, cash or credit card.

The membership fee is the same as last year:

- Benefactor \$125
- Woodworker Plus \$100
- Sawdust Maker \$75
- Regular Member \$50
- Senior Member \$35
- Student Member \$20

Time is running out and we do not want to lose you. Guild membership remains the best bargain in town.

If you have renewed your membership make sure you pick up your discount card for 2015 at the Guild.

— Gary Mielke

## From The Shop

Since the first of the year the Guild has over 100 new members and a large number have taken the Safety Orientation in order to use the shop. As the result the shop has been very busy during Open Shop periods. Everyone using the shop needs to pay extra attention to the surroundings and material being moved about while working on equipment.

Being aware is just as important for those working with hand tools at the benches. Cleaning up the shop is every member's responsibility. Clean as you go. Use the jointer, then when you're finished, clean up the shavings before leaving the machine. Check the bags on the thickness planer before using it as over full bags make a awful mess to clean up. If you don't know how the change them get the Foreman to show you what

to do (it's fun, trust me). Sweep up the floor, don't be the person who sneaks out before picking up, putting tools back where they belong, and cleaning up their mess.

If you're having a problem with or need instruction on a piece of equipment please ask the Foreman for help. If a tool malfunctions while being used inform the Foreman so it the problem can be noted and repaired. Wipe down and brush out hand planes before putting them back in the cabinet. If the planes are not cleaned rust will develop on the plane body from the perspiration on your hands. Or even from the sweat dripping from your furrowed brow!

Safety in the shop should be the foremost thought while we are working in the shop. We need to respect the equipment for what it

can do for you but more importantly what it can do to you if the safety rules are not followed. A few things that I have noted were long hair and loose fitting long sleeves. Long hair needs to be restrained in a crunchy or a hat to avoid getting caught up in moving parts. Long loose sleeves need to be rolled or pushed up to decrease the possibility of entanglement with rotating parts. Saw dust and shavings can enter the eye anytime you're in the shop, so safety glasses need to be worn at all times while in the shop regardless whether you are the one doing the cutting or just watching. For those of you who might need a band aid the first aid cabinet and eyeglass cleaning station are on the corner of hand tool classroom by the saw sleds.

— Erwin Kurtz

## Scroll Saw Update

Bill Evans facilitated the Scroll Saw SIG meeting on Wednesday, February 11<sup>th</sup>, at 7:00 PM.

The next meeting will be held March 11<sup>th</sup> at 7:00 p.m.

— John Tegeler

Bill reported that Dan Wilckens has donated a scroll saw 'shelf' pattern to the SIG. Bill suggested that he would like to have a contest making one and asked for volunteers to participate. Eight people signed and the contest was opened up to other Guild members at the next general membership meeting. Prizes will be awarded to the top three winners and there will be three months to complete the project.

After the Show-and-Tell, Bill spoke on the value of CA glue and its practical uses in scrolling.



More Sponsors!

## Metro Hardwoods

[www.metrohardwoodsinc.com](http://www.metrohardwoodsinc.com)

March SPECIALS

4/4 Aromatic Cedar S2SSLR 25/32" \$2.09/bf

4/4 Pecky Cypress S2SSLR 25/32" \$3.39/bf

4/4 White Oak S2SSLR 25/32" \$3.79/bf

4' x 8' - 3/4" Shop Grade Plywood Special Buy, Limited Quantities, As-ls, Maple, Red Oak, Birch \$50/sheet

Freud LU82MO10 10" x 60 tooth table saw blades \$39.97 each

2" x 2" poplar turning squares \$1.25/lineal ft.

Stabilized knife scales \$19.99 each

M-F 9:30am to 6:30pm

Sat 9am to 4pm

Closed Sundays

4243 S. Noland Road,  
Independence, MO 6405  
816-373-1710

David Roth  
Woodwork  
913-481-9016

Intarsia By Day



Marquetry By Night

[chefroth@everestkc.net](mailto:chefroth@everestkc.net)



Wood By Design  
(913) 962-0159



Re-View  
1235 Saline St  
N. Kansas City, MO 64116



KYLE ALEXANDER  
3113 BAYTOWN RD  
BAYTOWN, MO 64133  
OFFICE: 816-581-8665  
CELL: 913-638-2029  
FAX: 816-581-8666  
[www.superiorgrinding.net](http://www.superiorgrinding.net)

### Next Safety Orientation

March 21st 2015, 2:30pm at the KCWG shop.

Members, bring your waiver and completed test to get qualified to use the KCWG Shop!

## Special Interest Groups – All KCWG Members Are Invited

### Coming up!

Hand Tool SIG : March 22nd 2pm

How to Knot Handcut Dovetails with Greg Strasser

- Angle
- Tails vs. pins first
- Layout
- What can will go wrong
- Through dovetails
- Half-blind dovetails
- Half-lap dovetails

### Coming up!

Scroll Saw SIG : Wednesday

February 11th, 7pm

### Coming up!

Power Tool SIG : Sunday March

15th, 3pm We will continue working on the Planer. Onward to victory!

### Coming up!

CNC SIG : Wednesday March

25th 6:30pm We will start talking about how to work in 3D.

We will upgrade to Aspire V8.0 so get to readin' and tutorialin' at [www.vectric.com](http://www.vectric.com)

All SIG's of the Guild are free and open to all members of the Guild and their guests. Any questions concerning the CNC SIG please contact Chuck Saunders [gooberdog@gmail.com](mailto:gooberdog@gmail.com)

**“Pleasure in the job puts perfection in the work.”**

**-- Aristotle**

## Safety In the Shop

### Safely Working Around Wood Dust

One hazard exposure to a woodworker that is often overlooked comes from wood dust. This small nuisance is often overlooked as a hazard in the shop. Wood dust particles are like noise exposure; they can cause the most damage over time to your body. Wood dust can affect you in the following ways as an:

- **Irritant:** The most common way that wood dust affects a woodworker is by being a primary irritant. This means that dust can irritate your skin, eyes, and lungs through exposure to the dust. Immediate visible reactions are sneezing, coughing, runny nose, rashes, and asthma-like breathing problems.
- **Sensitizer:** Beyond being an irritating nuisance, some woods can make you increasingly more sensitive with each successive exposure. So even if you don't experience any allergic reaction to the wood or its dust upon first exposure, each time you breathe the dust or handle the wood, you become more sensi-

tized to that species of wood dust. Sometimes the reaction can be quite dramatic, resulting in rashes, severe sinus or respiratory pain/inflammation, or a number of other conditions depending on the wood species.

- **Toxin:** This is not as common, but some woods are considered toxic. One example of this is Yew, which according to ancient Roman knowledge, was capable causing fatality in certain cases.

- **Carcinogen:** If you look at this [hyperlink](#) to a toxicity chart of wood species, it identifies the woods that are toxic.

The Ways that you can minimize the wood dust risk is to reduce your exposure by implementing three basic controls in the shop.

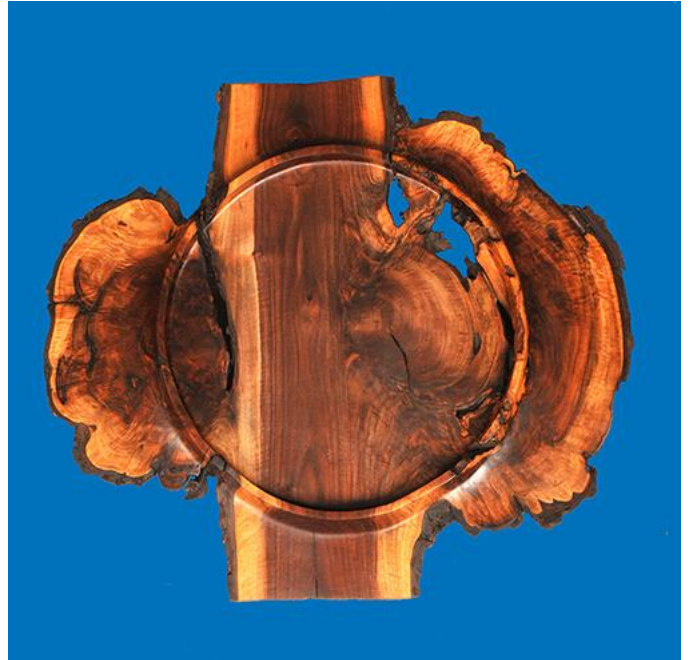
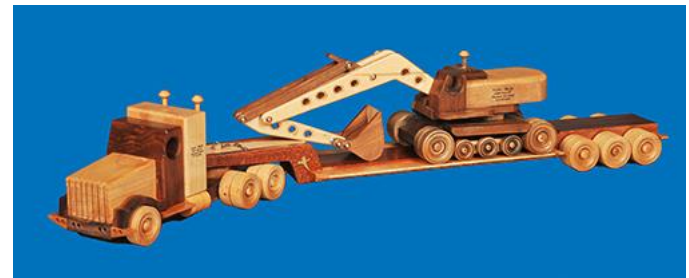
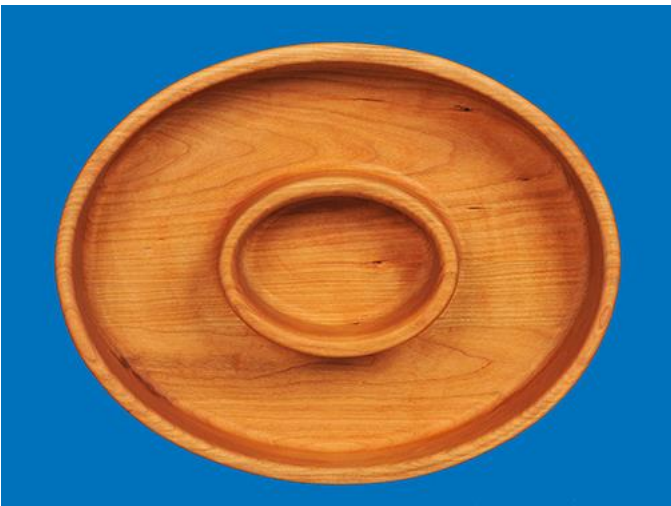
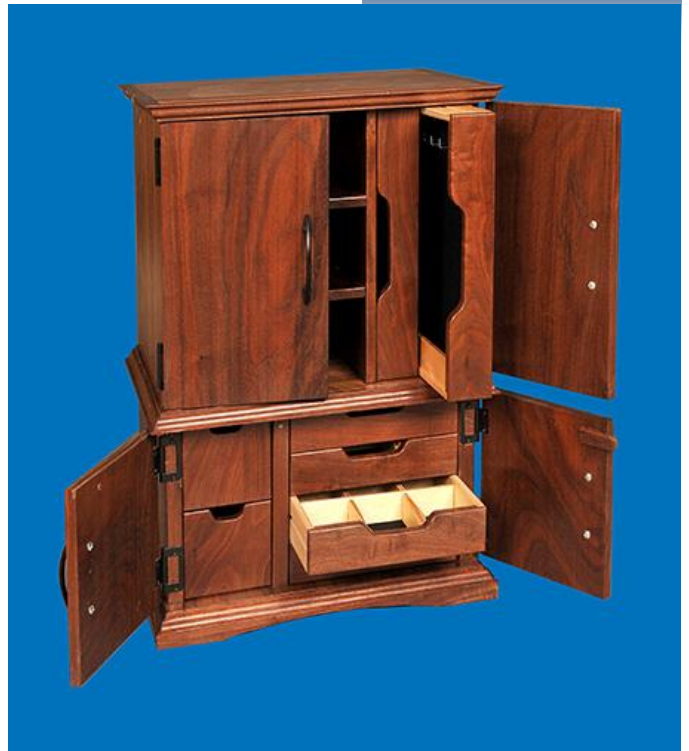
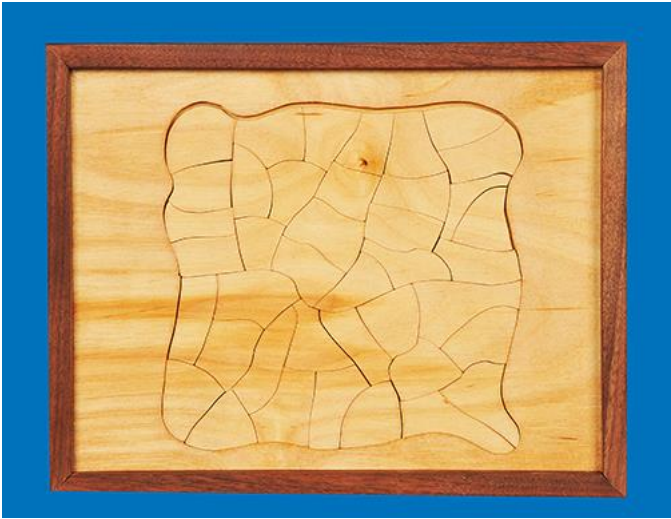
1. Always use personal protective equipment (dust masks, respirators, powered purifying respirators, etc).
2. Use a dust collector for all fixed and portable tools or a down draft table when sanding.

3. Use a ceiling-mounted air filter to collect airborne dust particles that are suspended in the air.

Dust cannot be avoided in a woodworking shop, but it can be managed. By recognizing the hazard, implementing the appropriate controls, the effects of dust on your body can be managed for a safer and more enjoyable time in the shop.

— Chuck Slagle







### Monthly Raffle Special Announcement

The months of March and April will have two special items in the Monthly Raffle. Two WW-II vintage Stanley #4 Smoothing Planes restored by the KCWG Handtool SIG. Member Greg Muller kindly donated two "barn fresh" planes for use by the Handtool SIG restoration session in February. Now those planes are ready to be put to use! Go dump out the change jar and get ready!

Before:



After:



## Member Profiles



### Janete Eaker

Welcome Janete Eaker to the Guild. She has been a member about 2 months, now. During the day she works for the FDA. The rest of the time, she's learning to be a woodworker. While she has no specialty, yet, she's looking forward to learning more. After having started woodworking on her own, she found the Guild and is looking forward to meeting more woodworkers and improving her skills. Janete has already discovered our auction where she got a great deal on a Delta miter saw for \$30. Janete offers this great safety tip: Don't drink and saw. So say hello when you see Janete at the meetings and welcome her to the Guild.

### **Dick Kammer**

Dick is our Director of Communications. He was roped into the job thanks to his pre-retirement vocations of Reporter, Photographer, Teacher, Administrator, and Librarian. He was obviously a perfect fit for the position. While he has been woodworking many years, Dick still considers himself a beginner. His favorite projects are quilt racks and bookcases because they're easy and make a splash. While he uses oak because of it's easy to use and reasonably priced, he is a fan of cherry and walnut for their beauty. Dick really enjoys use a hand plane. It just feels good when you're making whisper-thin shavings. Look for Dick at Open Shops, it's his favorite Guild activity. Don't forget if you need to communicate to the Guild, he's your man.



### **KCWG In the Blogosphere!**

<http://www.woodmagazine.com/blogs/woodworking-blog/2015/01/26/kansas-city-woodworking-show-2015-another-success/#more-4234>

Thanks to Jim Drummond for bringing this to our attention.



## On-line Safety Test for KCWG Shop "Green Tag"

**T**oday on-line testing is being used to evaluate skills for job openings at every rung of the career ladder from bank teller to executive level. To join this increasing trend, this month the KCWG is entering a new era with the Safety Orientation program, by moving to on-line testing. The requirements to receive a green safety name tag have not changed; just the manner in which the safety test is administered is changing.

In the last few months, a sub-team of the Safety Committee, headed by Jerry Stanley, has been reviewing companies and developing

procedures for this new on-line safety testing program. This new on-line testing program opens up a number of innovative methods to expand our program. We can add video, pictures, and new machine tests for everyone to take faster than we have in the past. According to Chuck Slagle, Director of Safety, This new testing method provides greater access and a better testing experience for our members. In addition we can expand our capabilities to provide video and pictures in the testing environment. I believe that we will be able to enhance our members learning experience.

A [Link](#) to the test will be located on the Guild web site, however, to be able to take the test it will require a password. The participant will be able to log on and off of the test over time, and know the results before arriving at the Safety Orientation. They will be able to receive a print-out of their score, and the questions, if they miss some questions, they bring it to the class.

As it is currently done, incorrect questions will be discussed with each participant to correct to one hundred percent.

— Chuck Slagle

### 2015 SAFETY ORIENTATION CLASS SCHEDULE

Date	Time	Instructor	Test Grader
Sunday, January 18	2:30 pm	Rob Young	Kevin Thomas
Saturday, February 21	2:30 pm	Chuck Slagle	Roland Mohler
<b>Saturday, March 21</b>	<b>2:30 pm</b>	<b>Roland Mohler</b>	<b>Chuck Slagle</b>
Saturday, April 25	2:30 pm	John E. Johnson	J.D.Swaffar
Sunday, May 17	2:30 pm	J.D.Swaffar	Erwin Kurtz
Saturday, June 20	2:30 pm	J.D.Swaffar	Jerry Stanley
Saturday, July 18	2:30 pm	John Johnson	Erwin Kurtz
Saturday, August, 22	2:30 pm	Roland Mohler	Jerry Stanley
Sunday, September 20	2:30 pm		Erwin Kurtz
Sunday, October 25	2:30 pm		Roland Mohler
Saturday, November 21	2:30 pm	Chuck Slagle	Kevin Thomas



# MARCH OPEN SHOP

Available on the web site under Hot Buttons

3/6/13 8:41 AM

Hour beginning >>:	9	10	11	12	1	2	3	4	5	6	7	8	9
1 Sun, Mar 01		Chuck Saunders											
1 Mon, Mar 02									Gary Strohm				
1 Tue, Mar 03	Gary Creek			Craig Arnold							Kara Paris		
1 Wed, Mar 04		Gary Creek 9:30-1:00									LC Mtg		
1 Thu, Mar 05	Gary Mielke										NC 101		
1 Fri, Mar 06										Scott Engleman			
1 Sat, Mar 07	Mike Jones												
2 Sun, Mar 08		Rob Young											
2 Mon, Mar 09													
2 Tue, Mar 10	Jim Stuart			Ron Lomax			Jack Gregg			Roland Mohler			
2 Wed, Mar 11		Gary Creek 9:30-1:00									Scroll Saw SIG		
2 Thu, Mar 12	Gary Mielke										NC 101		
2 Fri, Mar 13										Dave Kraatz			
2 Sat, Mar 14	Dave Kraatz			Bud Schenke									
3 Sun, Mar 15		Chuck Saunders					Power tool SIG						
3 Mon, Mar 16									Gary Strohm				
3 Tue, Mar 17	Gary Creek			Gary Mielke									
3 Wed, Mar 18		Gary Creek 9:30-1:00									General Mtg		
3 Thu, Mar 19	Gary Mielke										NC 101		
3 Fri, Mar 20										Brad Swaters			
3 Sat, Mar 21	Mike Jones					SAFETY OREINTATION @ 2:30							
4 Sun, Mar 22		Rob Young				Hand tool SIG							
4 Mon, Mar 23													
4 Tue, Mar 24	Jim Stuart			Ron Lomax			Jack Gregg			Roland Mohler			
4 Wed, Mar 25		Gary Creek 9:30-1:00									CNC SIG @ 6:30		
4 Thu, Mar 26	Gary Mielke										NC 101		
4 Fri, Mar 27										Dave Kraatz			
4 Sat, Mar 28	Dave Kraatz												
5 Sun, Mar 29		Chuck Saunders											
5 Mon, Mar 30													
5 Tue, Mar 31	Gary Creek			Craig Arnold							Kara Paris		



## Spring is almost here!

The Urban Lumber Company is gearing up for another open house and woodworker showcase. Mark your calendars for Friday, May 1st. We'll send out another reminder closer to the event, but wanted to give everyone plenty of time to finish up a project or two to bring in and share. Last year we showcased over 20 projects and would like to share even more great work this time. Stay tuned!

In other news, we've brought in a lot of new lumber, including the locally exotic (and hardly known) Tree of Heaven, or Ailanthus. It's a really white hardwood with amazing grain and worth checking out. In addition, we have a lot of Ash, Hard Maple, and some really pretty Sycamore. Finally, we've introduced box elder turning blanks and plan on cutting more.

We are continuing to saw and we have a lot of good logs to choose from. We recycled over 180,000 pounds of wood last year and have seen photos of some amazing projects made from our lumber. Thanks to all of you who have shared your work with us.

Visit our site to see our latest inventory and we hope to see you all on May 1st!

[urbanlumberco.com](http://urbanlumberco.com)



# Kansas City Woodworkers' Guild

Increase your Woodworking skill and knowledge



March 2015, No 3

**Find Us : KC Woodworkers' Guild  
3189 Mercier  
Kansas City, MO 64111-3631**

**Next General Meeting : March 18th, 7:00pm KCWG Shop  
Program: Award Winning Wood Carver, Dan Robidoux**

**Find us on the Web at [www.kcwoodworkersguild.org](http://www.kcwoodworkersguild.org)**

Have a suggestion for the Guild? Idea for a program, clinic, workshop? Contact us using the emails to the right.



### Next Safety Orientation

March 21st 2015, 2:30pm at the KCWG shop.

Members, bring your waiver and completed test to get qualified to use the KCWG Shop!



Sept 25-27 2015  
Crown Center, KCMO

Learn more about past conferences and watch for updates about the 2015 conference:

[www.woodworkinginamerica.com](http://www.woodworkinginamerica.com)

"I am still learning. "

-- Michelangelo

Position	Name
President : <a href="mailto:president@kcwoodworkersguild.org">president@kcwoodworkersguild.org</a>	Chuck Saunders
Vice-President : <a href="mailto:vicepresident@kcwoodworkersguild.org">vicepresident@kcwoodworkersguild.org</a>	Roland Mahler
Secretary : <a href="mailto:secretary@kcwoodworkersguild.org">secretary@kcwoodworkersguild.org</a>	Sharon Pugh
Treasurer : <a href="mailto:treasurer@kcwoodworkersguild.org">treasurer@kcwoodworkersguild.org</a>	Gary Mielke
Member-at-Large : <a href="mailto:memberatlarge@kcwoodworkersguild.org">memberatlarge@kcwoodworkersguild.org</a>	Kevin Thomas
Director of Events : <a href="mailto:events@kcwoodworkersguild.org">events@kcwoodworkersguild.org</a>	Tim Locke
Director of Membership : <a href="mailto:membership@kcwoodworkersguild.org">membership@kcwoodworkersguild.org</a>	George Rexroad
Director of Communication : <a href="mailto:communication@kcwoodworkersguild.org">communication@kcwoodworkersguild.org</a>	Dick Kammer
Director of Sponsorship : <a href="mailto:sponsorship@kcwoodworkersguild.org">sponsorship@kcwoodworkersguild.org</a>	Craig Arnold
Director of Training : <a href="mailto:training@kcwoodworkersguild.org">training@kcwoodworkersguild.org</a>	Mike Jones
Director of Programs : <a href="mailto:programs@kcwoodworkersguild.org">programs@kcwoodworkersguild.org</a>	Cliff Schuette
Director of Assets : <a href="mailto:assets@kcwoodworkersguild.org">assets@kcwoodworkersguild.org</a>	Erwin Kurtz
Director of Safety : <a href="mailto:safety@kcwoodworkersguild.org">safety@kcwoodworkersguild.org</a>	Chuck Slagle
Newsletter Editor : <a href="mailto:editor@kcwoodworkersguild.org">editor@kcwoodworkersguild.org</a>	
Librarian : <a href="mailto:library@kcwoodworkersguild.org">library@kcwoodworkersguild.org</a>	John McKee
Historian : <a href="mailto:g.creek@att.net">g.creek@att.net</a>	Ann Creek