

Wood Words

December Program: Holiday Dinner

by TIM LOCKE

Also, the annual Christmas Dinner will be December 18; 6:30 pm at the Guild Attendees vote on Show and Tell items. Bring your prize project from 2013. The project can be one previously brought to a guild meeting but must be from a 2013 completion.

Cost is \$ 10.00 per person; Spouses & family members are welcome Reservations in advance are required to get the meal count right by 12/14/2013 Contact Tim Locke, Events director cell 816 392 9889 or events@kcwwg.com for reservations and payments. The Guild website will have a PayPal button



Sponsors who offer discounts up to %10 with KCWWG membership card

-  Apollo Sprayers
www.bvlp.com
-  Schutte Lumber
(816) 759-6262
-  Woodcraft Supply
(913) 599-2800
-  Metro Hardwoods, Inc.
(816) 373-1710
-  American Grinding & Sales
(816) 561-1776
-  Overland Tool, Inc.
7805 Nieman Road, 66214
913-599-4044
-  Merit Industries
913-371-4441 or
800-856-4441
-  Santa Di Glass
All six locations
800-371-4527

President's Corner

by ROB YOUNG

Thank you all for a busy and productive year at the Kansas City Woodworkers' Guild Shop! Seeing what other people are making and learning makes the trials and tribulations of keeping the shop open, staffed and running worthwhile. 2014 promises

to be just as busy as we continue to grow (go renew your membership, right now!). Plans are in the works for several more nationally recognized woodworking figures so stay tuned to Mark's announcements and emails for more information. We kick off 2014 with a return visit by Chris Schwarz, late of Popular Woodworking Magazine editor-

ship and then soon after that a return visit by Lie-Nielsen and again after that the Woodworking Shows are back in town! In between, plenty of open shop time and clinics and workshops for all skill levels.

So once again, thank you for all that you do in and around the Guild and enjoy your holiday season with family and friends.

SHHHHHHHHHH!

by BARRY PENNINGTON

We would like to wish everyone happy holidays this season and thank you for your contributions and sup-

port, your Library is coming along well. We would ask that all future library contributions be held off until 2nd quarter in 2014, (starting in April) we are very grateful for our membership and we will take full ad-

vantage of completeing a few tasks that are planned in the meantime. So from us to you enjoy the holidays!

Ian Barry CJ Rich Larry Keith Charlie

Book review: Classic

ARTS & CRAFTS FURNITURE You Can Build, written by Andy Schultz.

by CJ SCHEPPERS

This is the second of three book reviews concerning my (current) favorite style of furniture. 'Call it Mission, Arts & Crafts, Stickley, solid oak, whatever; its robust construction, well-proportioned dimensions and display of skilled joinery carries it through the centuries. This time it's Classic ARTS & CRAFTS FURNI-

TURE You Can Build, written by Andy Schultz.

The book's 128 pages feature 19 projects. Each comes with a cut list, plan drawing, at least one color picture, personal notes about its design and numbered steps of construction.

Additionally, Mr. Schultz provides a brief history of the arts & crafts movement and its furniture, picture-illustrated construction techniques (mortises, quadrilinear posts, leg shaping, gluing in buttons, glue-up of large panels), all punctuated by quo-

tations of this period's Craftsmen.

Many other pictures of this style furniture are included as well as the settings and groupings in which they are used. It would be a coffee table book, at least in a woodworker's home. The author's greater attention to detail and explanation will help the novice and intermediate woodworker complete these projects. Perhaps the Guild has yet another book on this style of furniture?

Let's Talk Woodworking ... Working Dowel Ends on a Shooting Board

Text and Photos by William Johnston

It happened that I needed a short 5/8th inch hardwood dowel about 1 inch long cut from a longer dowel. No problem, of course, but the saw cut (with a backsaw, flushcut, or bandsaw) would leave the dowel rough on the end. I wanted both ends to be smooth and square to the sides with one end chamfered to accommodate easy insertion and removal from a drilled 5/8th inch hole.

My shooting board was based on plans from Lie-Nielsen's website (http://www.lie-nielsen.com/pdf/Shooting_Board_And_Fixtures.pdf). I used a miter plane that I made from a casting from St. James Bay Tool Company.

It was quick and easy to smooth and square the cross-grain dowel ends by laying the dowel along the fence and making two or three passes with the miter plane. If you don't have a miter plane most any bench plane or low angle block plane will do as long as the sides are parallel to the sole and the blade is ground flat. The larger the side surface area the better, of course. It would be okay to use a blade with the edges rounded (so as not to dig in when surface planing) as long as the edges are above or below the stock to be planed. Any blade with a crown would not be useful on the shooting board.



Chamfering the end of the dowel was equally straightforward. I move the plane forward on the shooting board and held the edge of the blade inside the diameter of the dowel. Holding the end of the dowel between the fence and the blade, I angled the dowel at about 45 degrees above the surface of the shooting board and 45 degrees back from the shooting edge. I just rotated the dowel with my fingers to make a nice chamfer to my liking.

I was pleasantly pleased to note that when I cut off the dowel to 1 inch and shot the rough edge, that the short stub was easy to hold against the fence and squared and smoothed easily.

Often hand tools do a quicker, easier, safer, and better job than an available power tool. Without the shooting board and miter plane I would have used a disk sander and miter gauge, taken off too much, and burned the end of the dowel (in some wood). Smoothing the end of the short dowel would have been risky on a disk sander and probably shot across the room to land, camouflaged, in a pile of shavings.



As always, comments are welcome and may be addressed to William Johnston, johnton@everestkc.net, 913-492-6942.

From the Shop

by ERWIN KURTZ

HAPPY HOILDAYS!!! I wish all of the Members and Friends of the Guild my best for this Holiday Season.

Looking back on 2013 a lot has happened in the Shop. First there were 2 new Saw Stop table saws to replace the Steel City and Grizzly table saws. This addition of the Saw Stop technology is a big step up in providing greater safety to our Members. The 37" wide belt sander came in March along with the 7 bit line boring machine. The move of the Library

has taken longer than anticipated, but the new book shelves and soon to be added A/V cabinet to house DVD player and computers for the operation of the book check out system and a 51" flat screen monitor will make the Library a more pleasurable experience. The Guild had donations from Members of a table saw used for rabbits and dados, an up-graded router table lift that makes dialing in the correct bit height a snap. Of course DeWalt Tools came through with new scroll saws, battery drills and impact drivers, belt sander, and 13" thickness planer.

The shop has become a busier place this last year with better attendance in the open shop hours and new Members that have passed the Safety Orientation Classes. Open shop hours have been extended on every Tuesday instead of every other, Monday afternoon and evenings have been added every other week and plans for more open shop hours will be considered if there is a demand and Shop Foreman to cover the hours.

Have a safe and prosperous NEW YEAR.

Sponsors who offer discounts up to %10 with KCWWG membership card



Strasser Hard-
ware
(913) 236-5858



Woodline
(800) 472-6950



Cedar Creek
Sawmill
(913) 638-1173



Custom Woods LLC
1-800-BUNKBED
www.1800bunkbedkc.webs.



Andre's Tearoom
5018 Main St
Kansas City, MO 64112
816-561-6484



Eagle Jigs, L.L.C.
14221 Peterson Road
Kansas City, MO 64149

Van-Ton

John Van Goethem
913-631-1094

David Roth
Woodwork
913-481-9016

Intarsia By Day



Marquetry By Night

chefroth@everestkc.net



White Crane Images
Neal Shoger
(816) 781-4000



Wood By Design
(913) 962-0159



Re-View
1235 Saline St
N. Kansas City, MO 64116

News from the Guild Sponsors

by CRAIG ARNOLD

METRO HARDWOODS DECEMBER SPECIALS

4/4 HARD MAPLE S2SSLR to 25/32" \$3.49 PER BD FT

4/4 CAMBIA S2SSLR to 25/32"

\$4.49 PER BD FT

4/4 PURPLEHEART S2SSLR to 25/32" \$8.99 PER BD FT

4/4 POPLAR S2SSLR to 25/32" \$2.19 PER BD FT

GUN METAL FUNLINE DESIGNER PEN KIT \$2.50 EACH

MINI BOLT ACTION GUN PEN

KIT GOLD, CHROME or GUN METAL \$8.50 EACH

4/4 WALNUT SHORTS SURFACED to 25/32" \$2.50 PER BD FT

WE WILL BE CLOSED on WEDNESDAY, DECEMBER 25TH and WEDNESDAY, JANUARY 1ST for the HOLIDAYS.

Speaking /Book Signing Event
Author Dennis Zongker

Dennis Zongker will be speaking about his woodworking art, how he has acquired his skills and the origins of his new book.

He will have the boxes there and copies of his book will be available.

WOODEN BOXES, a collection of seven unique wooden box projects, takes the term out-of-the box to a whole new level. Demonstrated with step-by-step instructions by expert woodworker Dennis Zongker, this guide shows crafters how to master beginner-to-advanced woodworking techniques that include:

CarvingDecorative Banding
Marquetry.....Bandsaw Techniques
Segmented Turning.....Joinery
Routing Inlays.....Full Mortise Lock
Veneering.....Finishing

WOODEN BOXES is filled with information that will surely come in handy when working on your next project.



The Taunton Press
Inspiration for hands-on living®

Dennis Zongker has been a professional custom furniture maker for over 28 years, specializing in carving and marquetry. Co-owner of Zongkers Custom Woods in Omaha, Nebraska, Dennis is a frequent blogger on FineWoodworking.com and teaches classes at Midwest Woodworkers



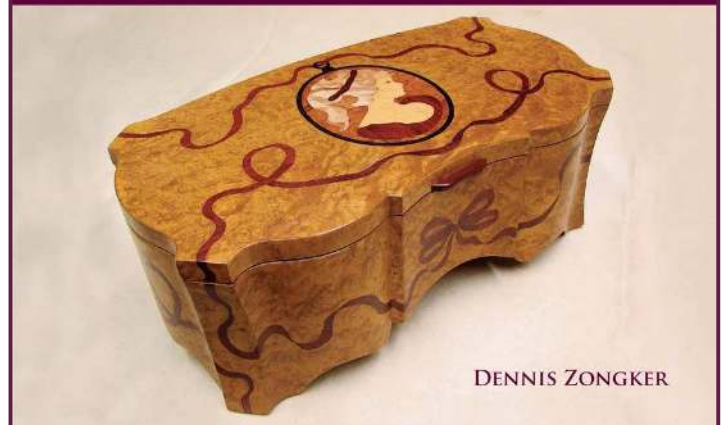
4243 South Noland Road
Independence, MO. 64055
816-373-1710

Dennis Zongker will be at Metro on:
Friday December 13th 10:00 AM-6:00 PM
Saturday December 14th 9:00 AM-4:00 PM



WOODEN BOXES

SKILL-BUILDING TECHNIQUES FOR SEVEN UNIQUE PROJECTS
CARVING • JOINERY • MARQUETRY • RADIUS INLAYS • SEGMENTED TURNING



DENNIS ZONGKER

"...A book that any woodworker looking to improve his or her techniques would be wise to add to their library. A real delight!"-- Randy, Oakdale, Ca.

"I'm very impressed with the level of detail Dennis has provided on his gorgeous projects. I'd call this book a "must have" for anyone interested in bringing his woodworking skills up to the next level".-- Charlie M. New Orleans, LA

Eyes on the Blackboard

by MARK WAUGH

Training opportunities for all guild members coming up. Please remember you need to have a Green Card to use the shop for any of our training opportunities unless noted. You can do this by signing up early and completing your written test before attending the SAFETY TRAINING ORIENTATION. Check the Web Site for the test and dates of the training in 2014. If you have any additional questions or concerns about your Green Card, please email safety@kcwoodworkersguild.org

Remember First Paid gets the spot in the Training

4 Way Book Match Marquetry Panel

with DAVE ROTH

→

	Tuition	Material
Member	\$	\$
WW +	\$	\$

This is a two Saturday work shop where you will be introduced to Marquetry and will make a small 4 way book match project. Dave will discuss stock selection and methods of work along with finishing suggestions. Class full; Starting Wait List for 2014

Tune Up a Dovetail Saw Workshop

with ROB YOUNG

→Saturday December 14 9-12 Noon

	Tuition	Material
Member	\$25	\$25
WW +	\$20	\$25

Rob Young will be Demonstrating how to Tune Up a Dovetail Saw and improve the performance of your saw. You will leave this workshop with a New Dovetail saw, sharpening files, Jointing Block, Rake Angle Guide and a wooden saw vice. See Instructor for more information. Must be a Member, Green Card not required for this Workshop

Small Dutch Tool Box Workshop

with CHRIS SCHWARZ

→January 18th, 19th at 8am

	Tuition	Material
Member	\$400	\$100
WW +	\$320	\$100

11 Paid, 1 Pending – Limit of 15 Students

Chris Schwarz will be here to teach a two day workshop covering his Dutch Tool Box from Popular Woodworking magazine. The workshop will focus on hand tool usage to construct the tool box. Don't miss out! The workshop is available to Non Guild Members (they must get a Green Card to use the shop) Course Fee is \$700 and a \$100 Material Fee Total cost \$800 (Oh just become a member, it's cheaper!)

An Evening with Chris Schwarz

with CHRIS SCHWARZ

→January 18th at 7pm

	Tuition	Material
Member	\$0	\$0
WW +	\$0	\$0

Chris will regale us with tales and tribulations of being a woodworker and publisher as well as answer a few of your questions (if you ask politely). There is no charge for Guild Members. Not member? Come down for a tour of our shop before the program and listen to a short pitch on why you should Join the Guild.

Chippendale Style Looking Glass

with CAL HOBBS

→January 20th, 27th, February 3rd, 17th

	Tuition	Material
Member	\$150	\$85
WW +	\$120	\$85

Cal is going to host a 4 week class for building a Chippendale Style Mirror starting Monday January 20th. In these classes you will be building the frame, applying the fret work and veneer to the outside and discussing finish. There will be little if any carving on this project so it is suitable for all levels of students.

We have lots more opportunities coming next year!! Let me know what you want to learn or any training ideas you have and we will see if we can make it happen! Let's go play in the shop! Mark Waugh training@kcwoodworkersguild.org

Special Events

by TIM LOCKE

Thanks for all who assisted at the

auction in 2013. The auction was quite successful due to the combined efforts of the Turners and the Woodworkers members and sponsors.

We have posted a donors list on the guild walls to thank our generous benefactors. The auction provided a significant contribution to the oper-

ating expenses of both guilds, a total of approximately \$13,235 before expenses. The shop was well prepared for the auction. The members and guest were able to purchase about 450 lots. Erwin put together a lunch, possibly too good as it sold out early.

Also, the annual Christmas Dinner will be December 18; 6:30 pm at the Guild Attendees vote on Show and Tell items. Bring your prize project from 2013. The project can be one previously brought to a guild meeting but must be from a 2013 completion.

Guild awards will be distributed.

Dinner Menu:

- Baked Virginia Ham
- With Herb Dressing and Country Gravy
- Smoked Brisket of beef
- Creamy Mashed Potatoes & Gravy
- Seasoned Green Beans
- Freshly Baked Rolls and Butter
- Cranberry Sauce

- Lemonade or Coffee

Members are asked to furnish deserts.

Cost is \$ 10.00 per person; Spouses & family members are welcome Reservations in advance are required to get the meal count right by 12/14/2013 Contact Tim Locke, Events director cell 816 392 9889 or events@kcwwg.com for reservations and payments. The Guild website will have a PayPal button

Upcoming Events

December 18 Christmas Dinner

Hand Tool SIG

by BILL JOHNSTON

Hand Tool SIG Sunday, January 26, 2014, 2:00 PM - 4:00 PM at the Shop All KCWG Members and their guests are welcome.

Subject "Wood Characteristics for Hand Planing". This will be an audience hands on program. A number of samples of common and exotic woods (both hard and soft) will be available for demonstration handplaning and audience participation. Species include at least pine and sassafras as representatives of softer woods, mahogany and cherry medium hardwoods, and oak, walnut, ash, hickory/pecan, and maple as hard domestic wood, and cocobolo as a hard oily exotic wood. We expect to also have some curly maple or curly cherry representing some difficult hardwoods.

We will have several sharp and set planes including jointers, jacks, smooth planes from Stanley and Lie-Nielsen, and if time permits, some bevel up planes to try on the different woods.

Participants are also invited to bring their own sharp and set handplanes and wood samples.

We will also have small pieces of recycled beech for a short demonstration in making a replacement wedge

for a plow or rabbet plane as an example of working with very small pieces of wood using a hand plane (including surfacing, sizing, cutting accurate wedge angles and top and bottom angles for skewed rabbet planes).

Participants will plane the various woods and discuss and experience the characteristics and suitability for hand planing on the various woods for comparison, including endgrain planing with a shooting board.

The purpose is to provide hands on knowledge of the wood and planes in order to provide experience and confidence using handplanes in your everyday woodworking.

Additional information and details will be provided to members by email. Or feel free to contact Rob Young (rwyong@ieee.org) or Bill Johnston (johnston@everestkc.net) should you have questions.

Hand Tool SIG - Sunday, February 23, 2014, 2:00 PM - 4:00 PM at the Shop All KCWG Members and their guests are welcome.

Subject: "Wood Threading".

Early history of making wood threading taps and dies and wood threading. Learn why you don't need a three in diameter bench screw and why early benchscrews were large.

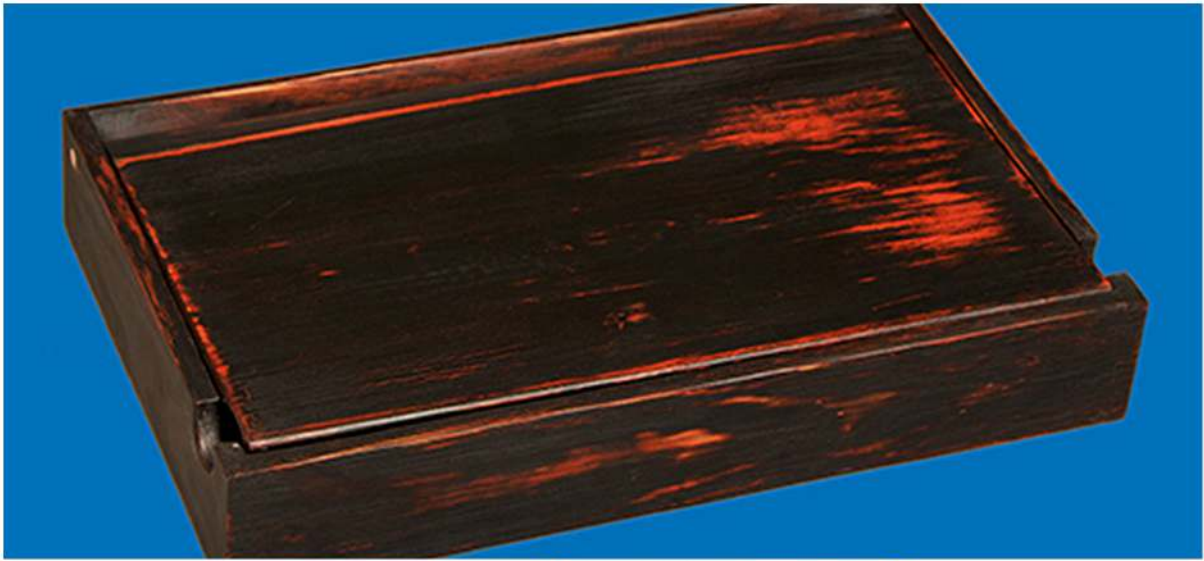
- Uses for wood threaded items

in workbenches, handscrew clamping, jigs, presses (apple and printing), candle holder and decor, etc.

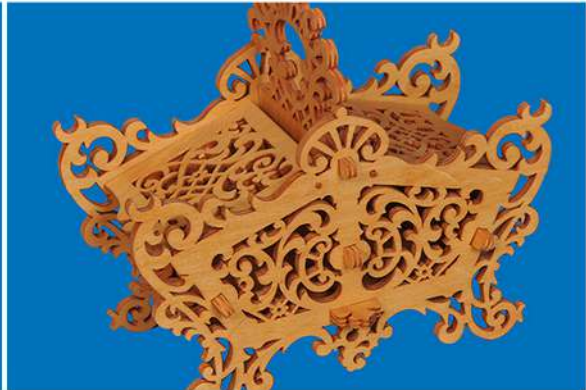
- Wood selection, preparing the stock and blanks (turning), lubrication during and after threading.
- Thread box threading and die tapping demonstrations.
- Poorer alternative to the thread box (Beal System) and why I would not recommend it.
- Making garters for benchscrews.
- Threading wood with metal taps for use with metal screws for making handtools and jigs
- Strength & durability of woodthreads.

Wood threading may be the easiest hand tool operation that you will ever perform. Woodthreading kits are readily available and affordable. Join us on Sunday, February 23 and bring a friend.

Additional information and details will be provided to members by email. Or feel free to contact Bill Johnston (johnston@everestkc.net) should you have questions.









Mark Your Calendar

by CLIFF SCHUETTE

Hopefully you'll find several programs that pique your interest and increase your knowledge and skills. If you don't, please contact Cliff Schuette, Program Director, to make suggestions, or volunteer to present

one of your areas of expertise.

December 18 Christmas Dinner

January 2014 *Intro to Joinery* with Scott Engleman

February 2014 *Annual Safety Review*

March 2014 *Polynesian Wood Carving* with Nick Nichols

April, 2014 *Early American Reproductions* with Joel Flicke

May, 2014 *Design Matters* with George Walker

June, 2014 *Crafting a Sculptured Chair* with Cliff Schuette

The Kansas City Woodworkers' Guild is a great source of information for every level of woodworker from amateur to professional. At monthly meetings, members can improve woodworking techniques and skills through hands on demonstrations, guest speakers and discussions.

The Guild supports its own Woodworking Shop, publishes a monthly newsletter with articles of interest, reports of events, notes, & comments, sends out for sale/wanted ads and sponsors' specials by E-mail. Many of our sponsors give members special prices and/or discounts on purchases of select tools and materials.

We invite you to attend one of our monthly meetings as our guest to learn first hand what our Guild is all about. All email addresses end with @kcwoodworkersguild.org

OFFICERS • President: Rob Young (785) 218-5636 President@

- Vice President: Chuck Saunders Vicepresident@
- Secretary: Gary Creek 913-262-7413 Secretary@
- Treasurer: Gary Mielke Treasurer@
- Member at Large: James Stuart (479) 616-9188 Memberatlarge@

DIRECTORS • Assets: Erwin Kurtz (816) 352-1188 Assets@

- Communication: Ian Newlin Communicaton@
- Membership: George Rexroad Membership@
- Events: Tim Locke (816) 392-9889 Events@
- Safety: Chuck Slagle Safety@
- Sponsorship: Craig Arnold Sponsor@
- Training: Mark Waugh (913) 636-7900 Training@
- Programs: Cliff Schuette Program@

ALSO • Cub Reporter: John Tegeler

- Library: Barry Pennington
- Newsletter Editor: Ian Newlin Editor@
- Webmaster: Ian Newlin Webmaster@

