

WOOD WORDS

The newsletter of the *Kansas City Woodworkers Guild* www.kcwoodworkersguild.org
Celebrating 25 years of Kansas City Sawdust

LEADERSHIP:

OFFICERS

President: John Johnson
 (913) 642-0054
johnsonje@bv.com

Vice President: Kevin Thomas
 (816) 941-8865
kv1014@sbcglobal.net

Secretary: Shelly Taylor
 (913) 341-2323
toushay929@gmail.com

Treasurer: Jack Gregg
 (913) 287-0808
jack66202@kc.rr.com

DIRECTORS

Assets: Scott Engelmann
 (816) 792-0470
slnjengelmann@aol.com

Communication: Bill Johnston
 (913) 492-6942
johnston@everestkc.net

Membership: Cliff Bell
 (816) 582-9442
cliffordwbell@gmail.com

Events: Larry Morse
 (913) 764-4879
lnmorse@swbell.net

Sponsorship: Kevin McAndrew
 (913) 381-5714
kjmkevnmack@hotmail.com

Training: Kara Paris
 (816) 682-5622
karaparis@sbcglobal.net

Programs: Bill Evans
 (816) 847-2318
billlevansgv@aol.com

ALSO

Video: Don Kruse

Books: George Rexroad

Newsletter Editor: Diana Rickel
editor@kcwoodworkersguild.org

Webmaster: William Johnston
webmaster@kcwoodworkersguild.org

Next Meeting: Wednesday, July 15

**Program: Mike Jones -
 Majestic Theater Handrail Restoration**

**Sawdust:
 The Presidents Corner**



The June 13 Open House was another outstanding event! No official count, but we estimated about 400 through our doors!!! Wow!!! This brought three new members and several showing interest. This event took a lot of planning and commitment, so please extend a special thank you to Larry Morse and his team. The Leadership Team has already started discussions on turning this into an annual event. If you have any thoughts, please share them with Larry.

With the three new members, we have broken our 2009 goal of 200, yet the year is only half over. Way to go Cliff Bell!!!! Cliff has now set his sights on the 300 by next year. He is seeking help, so please don't turn him down when he comes calling.

In preparing last month's column, I really enjoyed speaking with several long term members about our past and their expectations for the future. There were several more whom I wanted to speak, but simply ran out of time. I also received emails from members expressing interest in our his-

tory and a few with clarifying information. For example, Don Inbody, a former officer, clarified that it was not at the VFW in Sugar Creek where early meetings were held, but either the Moose or Elks Hall. He also clarified that at least one of the early shows was held at Municipal Auditorium's Exhibition Hall before moving to Crown Center. Don congratulates us in obtaining our new spaces, stating "That was always a dream when I was an officer of the Guild." Thank you Don!!!

I would like to see our history recorded and available through our website, so in the future months Shelley Taylor will capture this information. If anyone has additional history, please forward to Shelley and I.

It seems the featured program just get better each month. July's program will be a joint presentation by members Mike Jones and Kevin Brennan, titled "Restoring the History and Handrail at the Main Street Theatre". Kevin's company, Kansas City Windsor Tool Works, is a corporate sponsor and Mike is my predecessor as president. For those not familiar, the Main Street Theatre is on the National Register of Historical

(Continued on page 2)

PLEASE PATRONIZE OUR
SPONSORING MEMBERS



www.MontereyWoods.com
 (816) 582-9442



Schutte Lumber
 (816) 753-6262



Strasser Hardware
 (816) 236-5858



Wood By Design
 (913) 962-0159



Woodcraft Supply
 (913) 599-2800



Woodline
 (800) 472-6950



Metro Hardwoods, Inc.
 (816) 373-1710



Cedar Creek Sawmill
 (913) 638-1173



American Grinding & Sales
 (816) 561-1776



White Crane Images
 Neal Shoger
 (816) 781-4000



Birdie's Pub & Grill
 8889 W 75th St
 Overland Park, KS



Kansas City Windsor Tool Works
www.kcwtw.com



Andre's Tearoom
 5018 Main St
 Kansas City, MO 64112
 (816) 561-6484



Re-View
 1235 Saline St
 N. Kansas City, MO 64116
 816-741-2876

Landmarks and the restoration was just recently completed. One of the contractors contacted the Guild, while Mike was president, seeking a craftsman to rebuild the handrail. This is no ordinary handrail. Mike brought a couple examples to a meeting seeking interest of some of the best KC has to offer and several looked and said "Oh boy, is that going to be difficult", or a close facsimile, but not suitable for print. Mike, being unemployed at the time, decided to take it on himself and solicited Kevin's assistance. I've seen the photographs and it is magnificent, so come hear what Mike and Kevin have to say.

As a final note, Mary Ripka has started chemo and while it is going very well, she has decided to step down as Treasurer. We will miss her smiling face and contributions on the Leadership Committee!! Jack Gregg, who was assisting her, has agreed to take over in the interim. Jack will now need assistance, so anyone interested, please see Jack or I.

Also, I would like to thank everyone for the Get Well card last month. There were many comments that made me laugh. See you at the July Meeting!!!!

Best Regards,

John

News / Business
June 3, 2009



Call to Order

John Johnson called to order the regular meeting of the Kansas City Woodworkers' Guild Board at 7:00 PM on June 3, 2009, in the basement of the building at 9701 W. 67 St., Merriam, Kansas.

Roll Call

The following board members were present:

John Johnson, Shelley Taylor, Scott Engelmann, Bill Johnston, Larry Morse, Cliff Bell, Bill Evans, Kevin McAndrew, and Kara Paris. Also present were Guild members Diana Rickel as well as Jack Gregg, who is filling in for Guild treasurer, Mary Ripka.

The minutes from May were perused, amended, and approved.

John Johnson started with a report from Larry Morse on the upcoming Open House event, June 13th from 10AM until 4PM. Larry still needs more people helping out this Saturday, June 6th, with cleaning up our site and setting up. He made flyers for the event and distributed them to our sponsors. It is also in Woodcraft Supply magazine and on their website. Bill Johnston will post an ad on Craig's List under the tools category shortly before the event. Bill Evans will notify all other regional guilds – Lee's Summit, Columbia, St. Joe, Wichita, St. Louis –

about the event. Schools of woodworking, such as Marc Adams' and Kelly Mehler's, will be notified. High school woodworking classes were also suggested, but school is out for the summer. We need to keep this group in mind for future events.

We'll have hot dogs, chips, soft drinks, and water available for a small fee to offset the cost. Larry has many volunteers to do Show and Tell, including Jim McCord, Bob King, Jim Bany, Sid Steinhaufer, Paul Chafin, and Fred Chael. Woodworking demonstrations still need to be scheduled and we want to have both woodturning and woodcarving demonstrations as well. Bill Johnston knows a woodcarver that he will contact.

John Johnson suggested having AV set up for the Open House and that we show photographs, videos, and DVDs of meeting demonstrations and workshops that Roger Claxton and Craig Cottingham have been filming.

Officers' Reports

President – John Johnson

By-laws vote will be delayed due to the fact that Kevin Thomas and Mary Ripka are not present to-night. Comments will continue to be welcomed.

John met with Ed Bergstedt, the President of the Woodturners' Guild, and together they discussed the following:

Possible joint membership: John assigned Cliff Bell to come up with a draft plan of how the two guilds can have a joint membership by our October board meeting. How do we split the fees? What is the fee for a joint membership? How do we transfer funds between the guilds? How do we transfer the registration information? We need to have the plan by December so that it can be announced. Cliff said it will have the draft plan ready before the October deadline.

Possible joint auction: The Woodturners' have an annual auction held during their regular Monday night meeting time. It has generated some \$5,000.00 of revenue for them. Ed and John want to do a joint annual auction, held on a Saturday instead, to possibly generate more revenue. Items for auction can be both those donated by members as well as items made in a joint effort by each guild. This could be our next event and John assigned Larry the task of looking into it after our open house.

Possible woodworking university: John and Ed discussed establishing a kind of "university" of woodworking/woodturning that features four levels of skills - basic, basic plus, intermediate and specialty. Anthony Harris is in charge of training for the Woodturners and Kara Paris is in charge of training for the woodworkers. When possible, Kara and Anthony will start looking into this "university" possibility and develop a plan. John noted that this is a big idea and may take as much as a couple years of brainstorming,

researching, and planning to come to fruition.

Status of the floor plan: We are down to two alternatives that we're going to look at – one involves consolidating the turners' equipment with our equipment and the other involves keeping the equipment separate. A final and key step in the process is that once the two guilds agree on the floor plan we will go to the owner of our building for crucial discussions. He has had some concerns. Once we have his agreement on an extension then we can go onto to developing a long term plan.

John confirmed with Cliff that we did not commit to auctioning the Windsor chair. Cliff informed us that he had only talked with Ralph Quick about the possibility of doing so and using the proceeds in some kind of community service way, but nothing definite has been decided in regard to the Windsor chair.

John asked about the Kelly Mehler table. Kara reported that once we get people trained to use the workshop, we'll have a weekend workshop in which the table will be assembled and finished. Scott wants to get this done as soon as possible. John suggested a drawing from the attendees of the Mehler Workshop (members only) for the right to complete the table. He also suggested that neither the finished Mehler table nor the Windsor chair be auctioned, but rather kept for the Guild as showcase items and as an investments.

John asked us for suggestions and themes for the "President's Corner" article that he writes. Kevin McAndrew suggested a theme of "Looking Back, Looking Forward." This can be about membership, past and future, about projects, past and future, or whatever. John will work on it.

Vice President – Kevin Thomas is absent this evening.

Treasurer – Mary Ripka is absent this evening.

Secretary – Shelley Taylor

The card stock has not yet been purchased for the thank you, congratulations, and sympathy cards.

Directors' Reports

Director of Assets – Scott Engelmann

Kara Paris reported on the status of the Safety Program as follows:

She had a concern that some of the questions on the test were not covered in our literature. She brought this up to the committee and they agreed. Kara took care of the discrepancy and distributed the information to those who had already taken the foreman training. The website has also been updated, as of the 2nd.

A foremen's meeting took place on the 15th and an issue arose regarding information regarding the next of kin in the event of an emergency. The Safety Committee will work on this issue.

General safety rules regarding all eleven machines have been summarized on one document that can easily be accessed on the web.

Bill Evans mentioned that American Grinding has a dust collector for \$300.00. We need this for our shop and

he and Scott will check it out.

Director of Communications – William Johnston

The Member of the Month is Jason Newland. Bill has asked for help with this and we have given him a list of deserving members for the next six months. When that list is exhausted, we will supply him with more names.

Website updates – the ratified by-laws of 2004 and the draft by-laws will be changed to PDF files on our website. John also noted that not all of our sponsors, are listed on our website. Bill will take care of these items.

Diana Rickel reminded us that the newsletter deadline is the FIRST of the every month.

Director of Membership – Cliff Bell

John noted that Andre's needs to be added to our membership list. With that addition, Cliff announced that our membership is at 193!

Cliff had several suggestions regarding the membership budget as follows:

He made a motion to amend the budget for the printing of a new brochure for next year from \$450.00 to \$750.00. Diana seconded the motion and mentioned that once we reduce our newsletter printing costs, due to a greater reliance on electronic newsletter transmittal, we'll have more money in the budget for what Cliff needs. John asked that we vote on this at our next meeting and Kara tabled the motion.

Cliff suggested lowering the computer budget from \$2,500.00 to \$1,800.00.

A budget is needed for miscellaneous membership supplies, such as labels and pens. Cliff suggested a budget of \$250.00 for this purpose.

Cliff proposed raising the membership fee \$5.00, from \$35.00 to \$40.00, unless the fee is paid by the end of January of each year. John suggested he consider this when he works on the combined woodworker/woodturner membership proposal due by October.

Director of Programs – Bill Evans

The demonstration at the June meeting will be "Building a Holtzapffel 1875 Workbench" by Kevin Thomas.

Other scheduled demonstrations are:

July: Mike Jones – "Majestic Theater Handrail Restoration"

August: Arnold Baker – "CNC Probotix"

September: Santa Fe Glass – "Using Glass in Your Woodworking Project"

October: Mac Dressler – "Using Chisels" (This will be followed by a Saturday workshop of sharpening chisels. Kara mentioned that anyone attending such a workshop must be certified if they are to use any of our workshop equipment.)

Bill needs suggestions for the November program as well as programs for 2010.

Bill mentioned that a workshop involving sharpening/grinding techniques on the turning tools will take place on the 11th or 25th of July. When Bill has more

July: Mike Jones – “Majestic Theater Handrail Restoration”

August: Arnold Baker – “CNC Probotix”

September: Santa Fe Glass – “Using Glass in Your Woodworking Project”

October: Mac Dressler – “Using Chisels” (This will be followed by a Saturday workshop of sharpening chisels. Kara mentioned that anyone attending such a workshop must be certified if they are to use any of our workshop equipment.)

Bill needs suggestions for the November program as well as programs for 2010.

Bill mentioned that a workshop involving sharpening/grinding techniques on the turning tools will take place on the 11th or 25th of July. When Bill has more details about this workshop, he will post it on the website calendar and in the newsletter.

Director of Sponsorship – Kevin McAndrew

Kevin is in the process of updating our sponsor contact list.

He is also working on sponsor appreciation letters.

John suggested that we post information regarding the shirts, sweatshirts, aprons, and hats we’ll soon have available to our membership under a “store” tab on our website. Members could also order these items on our website and then pick up their order at the monthly meeting.

Director of Training – Kara Paris

John let Kara know that there is a summary of the old Craftsmanship Recognition Program on our website. John asked Kara to review this program and recommend whether we revive at some point or incorporate into the “university” discussed earlier.

Kara will be scheduling a meeting of the Marc Adams Workshop committee soon. This workshop will take place on the 3rd, 4th, and 5th of December.

John Johnson moved that the meeting be adjourned at 9:20 PM. The motion was seconded and passed.

Minutes submitted by: Shelley Taylor; edited for newsletter space by Diana Rickel



Kevin Thomas and the Holtzapffel Workbench By Fred Chael

Looking for a leisurely weekend project? How about building a Holtzapffel Workbench, complete with hardware and accessories? Wrongo! Just ask Kevin Thomas.

Kevin spent six full days in a class working with Kelly Mehler on the workbench. He advised that they were not easy days, either.

The workbench is a real tank, to use military parlance. None of the components are skimpy. Using

the hardwood of your choice (Kevin chose maple), the top is a full 3 inches thick, by 2 feet wide, by 6 feet long, or for some students, 8 feet long. It is made up of 2-inch segments, first glued into 6 to 8 inch wide sections (one of which is mortised for a row of bench-dog holes), then finally glued into the full 24 inch width. As you might surmise, gluing such massive components is no easy task, starting at the center of each section, then working toward each end. Since this required an inordinate amount of clamps, Kevin once again demonstrated that “woodworkers never ...”

Following gluing, the top is then planed to eliminate any warp or wind -- again no easy task. The ends are then cut square.

They didn't “skimp on the old world recipe” for the bench's undercarriage either. The 4 legs each measure 3 1/2 by 5 inches (made up of glued laminations). The lower stretchers between the legs (both long and short) measure 1 3/4 by 5 inches, while the top stretchers measure 1 3/4 by 3 inches. The leg assembly utilizes mortise and tenon joinery, certain joints of which are drawn together by the “draw-bolt” technique, using offset holes as the tensioning mechanism.

The face vise chop measures 3 inches by 6 1/2 inches by 34 inches long. One option for the operating hardware is a set of twin wood screws, but they are pricey at around \$300 for the set. On the other hand, doesn't a Mercedes-Benz deserve quality accessories? Or perhaps Anthony Harris might handcraft a set of screws for \$295! The end vise chop measures 2 3/4 inches thick by 4 inches wide by 13 1/2 inches long. Incidentally, I quote all these dimensions to illustrate the heft of this bench.

Obviously, a considerable amount of material is required for the bench, which Kevin estimated at about 100 board feet. That's a lot of maple for one project. On the other hand, look at the handsome workhorse which you've crafted. Just don't try to lift it by yourself -- unless you're aching for a king-size hernia.

The bench appears to be deceptively simple, but it's really not. It is well made, sturdy, and ready to meet the demands of your most intriguing woodworking projects.

In the opinion of this reporter, however, it is probably more workbench than the average woodworker needs. On the other hand, if you're up to the demands of a lot of cutting, jointing, planing, mortise and tenon joinery, and gluing with some brute strength added, go for it!

Member of the Month Roger Claxton

The thing I like best about wood-working is making things for my grandchildren and, hopefully, my great-grandchildren, to use. I love seeing the smiles on the grandkids faces



when they hop on their rocking horse. My most recent projects are rocking horses. I've been using construction grade pine to build them, but am ready to move on to hardwoods and learn about working those.

My favorite tool is my 12" planer. I used to work at Home Depot and know when their stock tends to be discounted. I also have some good friends among the Guild that have helped me find some attractively priced tools. As Treasurer of the Lion's Club, I like to make dollars stretch as far as possible for everyone.



My favorite part of the Guild meetings is the presentations. The show and tell part shows me what is possible, the presentations provide the information about how to do things.

When making some chairs, I initially had some trouble getting all the legs even. I started to take a scrap piece of wood and measure from under the seat to the bottom of the shortest leg, then mark all the other legs to that dimension. After a few quick pulls with my Japanese saw, voila, four legs with the same length.

My safety tip is to keep fingers well away from any tool parts that move.



ALTERNATE WOODWORKING DEFINITIONS AND USES FOR TOOLS

BELT SANDER: Used for making rectangular gouges in wood.

PAD SANDER: Used for easing the edges of the rectangular gouges.

RANDOM ORBIT SANDER: Used for removing the marks left by the PAD SANDER, usually on any surface perpendicular to the original gouge. May also be used to make semicircular gouges in wood.

DETAIL SANDER: Makes triangular gouges, generally in blind corners where no amount of hand sanding can fix them.

ANTIQUe TOOL OF THE MONTH

JULY 2009 By DON KRUSE

This month's antique tool is a compass plane patented on Jan. 28, 1862 and Mar. 22, 1864 by George F. Evans of Norway, Maine. The first patent was for the plane and the second was for a modification of the connecting arms (rods that connect the sole to the frame), they are now curved. This is the first successful production of an adjustable me-



tallic compass plane. It remained in production by R. H. Mitchell of Bangor, Maine and by Darling & Schwartz of Norway, Maine until 1871 when Stanley started selling their almost identical No. 13. There may have been some deal between Mitchell and Stanley, but there have been no documents found to verify this. Some of these planes have a brass oval soldered to the side of the body containing R. H. Mitchell's manufacturing information, but most of these are missing

The sole may be adjusted to plane concave or convex surfaces, but care still needs to be taken to pay attention to the grain direction as with all planes.

If you find one of these, make sure the rivets connecting the sole to the frame and intact. A lot of compass planes have these rivets damaged by someone trying to adjust them to an extreme concave curve.

Woodworking safety tips

1. Always wear safety equipment.
2. Wear appropriate clothing – nothing too loose to get caught in machinery. Also consider if your clothing can help protect you against wood chips and such.
3. Stay alert. If you start to get tired or distracted, quit.
4. Disconnect power before blade changes.
5. Use, at the most, one extension cord. This will help make you aware of which tool has power before changing blades, cutters and bits.
6. Use sharp blades and bits, and keep them clean from pitch. Dull cutting edges make working harder.
7. Clear your working area from nails, screws, other metal and stray tools and wood scraps on or near working surfaces. Sweep the floor so you don't slip or tip on scraps and sawdust.
8. Always work against the cutter. The cutter should cut into the stock.
9. Never reach over a blade to remove cut-offs. Wait until any sharp cutter (saw blade, router bit, etc) has stopped. Better yet, use a piece of scrap or push stick to remove cut-offs then, too.
10. Avoid distractions. If you are interrupted, finish the cut to a safe conclusion before taking your attention away from the wood-working too.

Show and tell

Ron Lomax – shop made router plane

Note: stated it cost \$0.85 to make it



Hand plane in bone and cherry, box for cards and poker chips – Ken Grainger



Marking knife – Craig Cottingham



Box for horseshoe game – Scott Engleman



Merl Krugman – house number



Cliff O'Bryon – Mission style chair



Jim Baney – one of a set of chairs, each with 18 mortise and tenon joints.

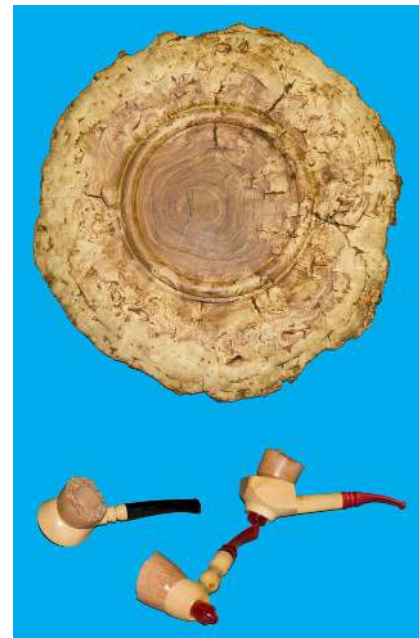


Jim Ramsey – rocker in the style of Sam Maloof



Phil Aker – various wood turnings.

Anthony Harris, platter with natural edge of burled Locust, pipes with interesting bowls.



Dan Soliday – lectern



John Tegler - band saw boxes



Kansas City Woodworkers Guild
P.O. Box 413922
Kansas City, MO. 64141

New Members

Mike Burlingame
 Will Henricks
 Charles Lynn
 Frank Mangiaracina
 Eric Mosley
 Janet Mosley
 Chuck Saunders
 Tom Stolberg
 Brad Swaters

(Over 202 strong and growing!)

Visitors:

Rob Haggard of Platte City
Rick Eilliland of Olathe
Jesse Pugh of Lenexa
Jack Reeves of Shawnee
Darrell Starling of Kansas City Missouri
Debi Overton of Smithville
Rustin Otney of Olathe
Daniel Kenslow of Kansas City
Bryan Paris of Holt
Bob Ventrillo of Kansas City
Bob Bundschuh of Shawnee
Mike Boatwright of Shawnee

Special Interest Group
Hand Tools - Organizational Meeting

All interested in the SIG - Hand Tools are invited to attend a kickoff organizational meeting on Sunday, July 26, at 2:00 at the shop. **An email will be sent with additional details.**

A Special Interest Group generally is a small group of members who share a particular interest, such as Using Hand Tools, who would like to get together, talk shop, and further their special interest. It is also a fast track way to learn from fellow members and their experiences.. An ideal group would consist of several members, who would like to learn more about and share their special interest, and others who are beginners, and hopefully a mentor with expertise in the special interest.

For those of you expressing an interest in this group, please begin putting together your thoughts on the following:

What specific area of hand tools are you interested?
 collecting; using (for example, bench planes, chisels, back saws for joinery, dovetails); tuning & sharpening planes for use (for example, bench planes);
 acquiring, recognizing, pricing older handtools?

What experience and expertise could you share, discuss, demonstrate, even though you may not be an expert?
 sharpening tools; tuning planes; acquiring old handtools; using benchplanes, a Stanley 45/55, molding planes; dovetails; acquiring older user tools.

Please feel free to contact **William Johnston, Director of Communications**, johnston@everestkc.net, 913-492-6942 with any of thoughts, ideas, or role that you would like to play in the Hand Tool SIG.

Calendar

Leadership Meetings, 7:00pm 9701 W 67th St Merriam, Kansas 66203

Guild meetings, 7:00 pm 9701 W 67th St Merriam, Kansas 66203, Downstairs

Newsletter deadline: First of the month

Executive Meetings

2009

July 1st

August 5th

September 2nd

October 7th

November 4th

December 2nd

2010

January 6

February 3

March 3

April 7

May 5

Guild Meetings

2009

July 15th

August 19th

September 16th

October 21st

November 18th

December 16th

2010

January 20

February 17

March 17

April 21

May 19

Coming Programs and events

July: Mike Jones -

“Majestic Theater Handrail Restoration”

August program – Arnold Baker – CNC router, tips and techniques about how to use it.

September: Santa Fe Glass – “Using Glass in Your Woodworking Project”

October: Mac Dressler – “Using Chisels”

A Saturday workshop on sharpening will follow, but you must be certified on the Guild’s workshop equipment to participate.

November TBA, but might be: Spike Carlsen, author "A Splintered History of Wood"

Workshops

Marc Adams – Dec 4, 5 & 6

Ben Hobbs – Pencil Post Bed, March 19, 20 and 21, 2010.

