



Wood Words

Kansas City Woodworkers Guild www.kcwoodworkersguild.org

Volume 24 Issue 3

March 08

Guild Meetings:
Jacob's Well Church,
1617 W. 42nd St.,
KC Mo. 64111

**Have you paid
your dues? Last
Newsletter?**

DIRECTORS-OFFICERS:

- President:** Jim Bany
(913) 341-3559
jimbany@aol.com
- Vice President:** Mike Jones
(816) 204-6406
mikej@completehomeconcepts.com
- Secretary:** Phil Akers
(816) 320-3780
pakers@ford.com
- Treasurer:** Aaron Menning
(913) 707-1000
aaron@menning.com
- Events:** Roger Grout
(913) 829-4654
roger.grout@weitz.com
- Communication:** Nan Melton
(913) 831-9809
nan_luvbeachtravel@yahoo.com
- Sponsorship:** Kevin McAndrew
913 381-5714
kjmkevmack@bigfoot.com
- Membership:** Wayne Suter
816 916-6230
wlsuter@kc.rr.com
- Training:** John Johnson
(913) 642-0054
johnsonje@bv.com
- Education:** Bill Evans
(816) 847-2318
billevangv@aol.com
- Video:** Don Kruse
- Books:** George Rexroad
- Editor:** Kevin Thomas
kv1014@sbcglobal.net
- Webmaster:** William Johnston
johnston@everestkc.net

Sawdust: The Presidents Corner

Jim Bany



This past week the Kansas City Woodworkers Guild lost a good friend. Greg Godbout, who was the Delta and Porter Cable repairman in Kansas City for over 30 years, passed away unexpectedly. He had come to the Guild to put on programs on numerous occasions. To say that Greg was a wealth of knowledge would be an understatement. In fact, Greg had memorized every part number on every Delta and Porter Cable tool ever manufactured. He knew all the idiosyncrasies and nuances of just about every power tool on the market. Greg could look on a tool and tell you what was wrong with it and how to fix it.

For me personally, I lost a close friend. I called him "Greggie" and he would kind of snicker every time I called him that. I remember the first time I met Greg was right after I moved to Kansas City in 1983. I had

to have a tool fixed so I took it to the Porter Cable tool repair place at 12th and Swift in North Kansas City. Greg repaired my Rockwell belt sander on the spot. I would always ask Greg about any power tool I was contemplating purchasing and most of the time I took his advice. He always wanted feedback about how they were working. That was Greg the professional. The personal Greg was a big teddy bear with a heart as big as his size. He would help you out in any way he could. I never saw Greg get flustered or frustrated. He had this easy-going way about him that you couldn't help but like.

Back in 2002 I was doing my yearly Habitat project that required building four houses at one time. Greg came to me and volunteered to supply all the power tools I would need to build the four houses. I recall the satisfaction he got from that when I took him on a tour of those Habitat houses when they were completed. My favorite of Greg has to be

(Continued on page 2)

PLEASE PATRONIZE OUR SPONSORING MEMBERS

-  www.Shop.MontereyWoods.com
-  [Home Storage Solutions](http://HomeStorageSolutions.com)
(816) 916-6230
-  [Elmwood Reclaimed Timber](http://ElmwoodReclaimedTimber.com)
(816) 532-0300
-  [Liberty Hardwoods](http://LibertyHardwoods.com)
(816) 231-0852
-  [Paxton Woodcrafters](http://PaxtonWoodcrafters.com)
(816) 483-0659
-  [PlansNOW](http://PlansNOW.com)
www.PlansNOW.com
-  [Schutte Lumber](http://SchutteLumber.com)
(816) 753-6262
-  [Strasser Hardware](http://StrasserHardware.com)
(816) 236-5858
-  [Klockit](http://Klockit.com)
800 556-2548
-  [Wood By Design](http://WoodByDesign.com)
(913) 962-0159
-  [Woodcraft Supply](http://WoodcraftSupply.com)
(913) 599-2800
-  [Woodline](http://Woodline.com)
(800) 472-6950
-  [Microplane](http://Microplane.com)
800 555-2767
-  [Ozark Lumber](http://OzarkLumber.com)
479 253-5994
-  [Hartville Tools](http://www.hartvilletool.com)
www.hartvilletool.com
-  [Klingspor's](http://www.woodworkingshop.com)
www.woodworkingshop.com
-  [Metro Hardwoods, Inc.](http://MetroHardwoods.com)
(816)373-1710

his bib overalls and scruffy haircuts. Greg was his own person and while going through cancer treatment a few years back, said: "If I had it to do all over again, I wouldn't change a thing." How many of us can say that? When Greg ended a conversation on the phone, his last words were always "Goodbye now."

So Greg - Goodbye now. I'm really going to miss you

Program: Porter-Cable's Omni-Jig

By Shelly Taylor

Melanie Kuenning and Andy Beckman from Porter Cable presented the new Omni-Jig Joinery System at the February meeting. Omni-Jig is available in two models— the 16 inch (#55160) and the 24 inch (#77240)— and Melanie and Andy specifically demonstrated the features of the larger model. Both models offer excellent precision joinery and save the woodworker time with their amazing efficiency.

The 24-inch Omni-Jig allows you to cut variable spaced through dovetails, variable spaced half blind dovetails, and single pass half blind dovetails in wood ranging in capacity from 1/8 inch to 1 1/2 inch stock. Stock is held securely with clamps while a stabilizer bar amply aids router control.

The Omni-Jig's many special features enhance its user-friendly style. It has easy-to-read on-board instructions, as well as a dovetail "recipe" card that easily indicates the stop, bit, and collar you need for a particular cut. Both are color-coded to help guide you through the various applications of the Omni-Jig. The router bit depth gauge, meanwhile, is preset for dovetails and allows you to quickly and accurately set the depth without taking measurements. The template positioning stops, along with the router bit depth gauge, lets you "set and forget" and so provides excellent repeatability across applications. In addition, the Omni-Jig features steel and alloy construction with machine textured surfaces that help prevent stock slippage and comes to you pre-assembled. As already mentioned, the Omni-Jig also features steel clamping bars, a single-hand clamping system, and the router stabilizer bar.

Several accessories come with the OmniJig as well. It includes a jig base, of course, along with left and right template stops, a dovetail bit, a straight bit, 7 template guides, and a router bit depth pod. Along with the owner's manual, you will also receive an instructional DVD with Norm Abram guiding you through the many applications of this wonderful tool. Optional accessories, meanwhile, allow you to cut miniature dovetails, box joints, and sliding tapered dovetails. A component storage case and dust hood is also available.

For more information, and to learn about the features of the 16 inch Omni-Jig, go to www.deltaportercable.com an excellent website that includes virtual tours and videos demonstrating the use of the jigs.

Now here's the really exciting part! Melanie and Andy are offering a free router with purchase through March 20 for members of the Kansas City Woodworkers Guild. Buy either Omni-Jig, send your receipt to Porter Cable, and they will drop ship a FREE router to you. Melanie and Andy are certain you are going to love the Omni-Jig, so go ahead, get one, and let them know what you think!

Refreshments Anyone?

After several years of service, providing thirsty and hungry woodworkers with snacks and drinks, Terry Stairs and Frank Lane are retiring as the refreshment committee. So the Guild is looking for a couple of good men or women to take over for Terry and Frank. So if you can make coffee, buy cookies, ice and soda pop you might just be our guy. Volunteers are asked to contact our President Jim Bany or Vice-President Mike Jones. A special thanks Terry and Frank from the bottom of our stomachs.

The Andre's Table and Bench Diaries

By Shelly Taylor

Well, we've hit the ground running with the Andre's Table and Bench Project! John Johnson, project manager, presented an overview of the plan at the February meeting. What follows is information on deadlines and particular teams and team leaders who are leadin' the whole shebang!

Let's begin with the deadlines:

- Five 4 person tables by the end of March
- Fourteen 4 person tables by the end of April
- Fourteen 2 person tables by the end of May
- Six full benches by the end of July
- Eight half benches by the end of August
- Two specialty benches by the end of September

That's a grand total of 33 tables! Kansas City Woodworkers Guild is building 19 four person tables and 14 two-person tables for Andre's. In the restaurant biz, we would say -- 19 four-tops and 14 deuces!

So, just who are the team leaders behind this amazing fabrication of 33 tables for Andre's? They are as follows:

- Bill Bysel, in charge of 10 four-tops
- Roger Grout, in charge of 9 four-tops
- Ron Lomax, in charge of 7 deuces
- Chuck Slagle, in charge of 2 deuces
- Bill Evans, in charge of 10 four-top pedestals
- Paul Twenter, in charge of 9 four-top pedestals
- Russ Amos, in charge of 7 deuces pedestals
- Scott Engelmann, in charge of 7 deuces pedestals

As you can see, four teams will be working on tabletops, while the other four teams will be working on table bases, otherwise known as pedestals. Now, if you've done the math (and I know you have!), we seem to be short five tables. That's because some of the chairs from the previous project with Andre's adjoin with the new tables. A special thanks goes to Ron Lomax, who stepped up when original team leader Cliff Bell had to undergo some unexpected surgery. Word has it that Cliff is doing well and on his way to a full recovery.

In addition to the fabrication teams, we have the following additional teams:

- Design Team led by John Johnson
- Template and Jig Team led by Dave Kraatz
- Historian Team led by Kevin Thomas
- Quality Control Team led by Jim Bany
- Materials Team led by Mike Jones
- Assembly Team led by Kevin McAndrew
- Finish Team led by Brian Kemp

A lot has already been accomplished since the February meeting. Members of various teams met later in the month of February and "hammered out" slight changes in the table design and identified jigs and templates. Dave Kraatz is working on the first set of jigs and templates as we speak ... wait, I think he's already finished! Aaron Menning, meanwhile, has prepared AutoCAD drawings that Regal Plastics of North KC will use to provide plastic templates cut with a CRC machine for the uprights. Jim Bany has prepared packages for the first two tables. Bill Evans is hard at work, making the pedestal assemblies. And Mike Jones is busily listing the materials that we need for the entire project.

We'll begin with making the first two tables, knowing the process may be refined further, pending their outcome. Three more will be built by the end of March and so will keep us on track with our timetable.

The Kansas City Woodworkers Guild website has dedicated a page to the Andre's Table and Bench Project and you can find more information about the teams there. At a later date, a sketch of Andre's floor plan will be available for your view and will include a showing of the tables and benches as they are completed.

If you haven't already volunteered yourself for the making of the Andre's tables, please do so NOW! Talk with any of the team leaders and they will gladly add you to a team. Stay tuned for the next newsletter detailing our continued progress, as well as a bit of history about how the Andre's Project all began.

Elections 2008

Well Folks, It's that time again. Time to exercise your constitutional right to vote. Several of the Guild's Officers and Directors are up for election this year. Nominations will be accepted during the March meeting for the following positions:

- President
- Vice-President
- Director of Membership
- Director of Communication
- Director of Events
- Director of Training

Voting will take place at the April meeting. So if you've ever felt like being a part of what makes the Guild go, put in your nomination. Let the campaigning begin!

Shop Tips

Micro-Adjust Your Router Table Fence



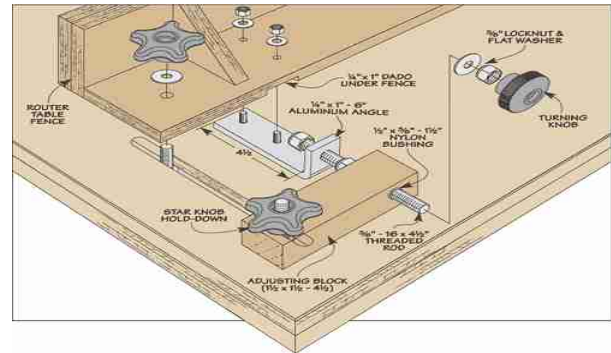
The router table in my shop gets lots of use. But it's always difficult to make fine adjustments to the fence. So I built the micro-adjuster you see in the photo above using spare parts I had around the shop.

The adjuster is easy to build. Start by drilling and tapping a strip of 1/4" aluminum to accept a piece of threaded rod. And then bend the aluminum strip into an "L" shape.

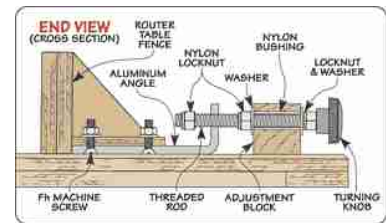
Next, drill two holes in a hardwood adjusting block. One horizontal hole for the threaded rod and a vertical one for the hold-down. Then you can cut a dado at the bottom of the

fence to hold the piece of L-shaped aluminum in place.

Assembly. Put the pieces together by slipping the threaded rod through the adjusting block and adding washers and locknuts, like you see in the drawing and detail below. This allows the aluminum strip attached to the fence to be moved forward and backward one thread at a time when you make fine fence adjustments



Fence Adjustment. To use the micro-adjuster, you'll first need to lock down the opposite end of the fence. Then lock down the micro-adjuster by tightening the knob on top of the adjusting block. Use the turning knob to adjust the fence to the desired position. Once the fence is located where you want it, lock down the other end of the fence. Then all that's left is to turn on your router and you're ready to go



Printed by permission of: © August Home Publishing Co.
All rights reserved. For more tips like this, visit:
www.WoodworkingTips.com

TREASURY REPORT

(March 2008)

Beginning Balance- \$5771.98

Income- \$13,089.00

Expenses- \$389.39

Ending Balance- \$18,471.59

Paid Members-

Senior-22

Regular-37

Associate- 5 , Sponsor- 2

Member of the Month Bill Kuhlman

By Nan Melton

March's Member of the Month, Bill Kuhlman, started woodworking about 54 years ago, helping his father as a rough-in carpenter and later building furniture. His current specialty, however, is woodturning. His preferred projects are ornaments, thin bowls and thin segmented plates.

While he uses a lot of red birch- it's a lot like hard maple with tight grain and a nice grain pattern - he used figured grain box elder burl to make a flower vase for his wife. His great tool buy was purchasing a new Jet 1442 lathe at a substantial discount.

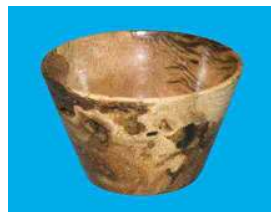
He finds his wood chisels are the hand tool of choice- they can do things that other tools cannot. His compound miter saw is his favorite power tool. It's very good for doing the accurate, consistent miter cuts that are so important in segmented projects and making picture frames.

Bill has worked on several phases of the chair project (for André's), and the VFW picture frame project. He built six frames and put the final finishes on more than sixty others! Show and tell is his favorite guild activity, where he is a frequent contributor. Bill has also been a contributor on Jim Bany's *Habitat for Humanity* projects.

Bill has valuable tips for us turners: always keep your turning tools sharp, even if you have to sharpen every few minutes. A sharp tool is not only easier to use, it's safer. And always sharpen your tools before making your final cuts.

He echoes Betty Scarpino in safety recommendations: always wear eye protection, and better still, a face shield.

Bill, thank you for your contributions, and congratulations for being our March Member of the Month!



EDITORIAL

Well it's been a year since I took over the reigns of our newsletter. Let me say, it has been an unexpected joy to work on. Through my work I have come to know with more Guild members than I ever expected. Some very talented and knowledgeable people, who share that knowledge freely. I want to thank the many members who make the newsletter possible each month. Jim Bany, Phil Akers, Neal Shoger, Nan Melton, Don Kruse, and Shelly Taylor all do a great job of writing the articles, that I assemble into the newsletter you read each month.

As I move into my second year as editor, I wonder, How can I make the newsletter better? What do you, the guild member and reader want to see? Short of copyrighted material, I have a blank slate in front of me each month. I want to hear from you, the Guild, what do you want to see?

We're moving into an exciting time in the history of the Kansas City Woodworkers Guild and I want to make sure that you are kept informed. Please email comments to kv1014@sbcglobal.net.

The Editor
Kevin Thomas

Want to help cut guild monthly costs? Consider receiving the newsletter via email. It is faster and comes in color. If you are interested, please send an email to William Johnston at: johnston@everestkc.net, or add your email to the Attendance list at the monthly meetings.

Newsletter Deadline: 1st of the month:

Please send all submissions for articles, tips, want ads announcements and anything else to Kevin Thomas: 816 941-8865 email: kv1014@sbcglobal.net 100 W. 96th Terrace, Kansas City, MO 64114

Antique Tool of the Month

By Don Kruse

March's tool of the month is a pair of inclinometers. The difference between levels and inclinometers is that levels tell the user if something is level, inclinometers tell him how far off of level it is.

The top one pictured was patented June 25, 1907 and manufactured by the Gibson Plumb & Level Co. of Lahoma, Oklahoma.

The lower one is a Hight Micrometer Level from Toledo, Ohio. It is marked Pat. Pending. It also has a micrometer type adjustment on one end to allow it to be set to measure a fixed grade.

Both of these inclinometers work off of a pendulum. The Hight also has spirit filled vials for checking level and plumb.

These tools are not very common, like most inclinometers they were manufactured and sold by small independent firms



Wanted Writers

Do you have a humorous story of your woodworking adventures? Or maybe you'd like to pass along a technique you've learned along the way? We are looking for stories or articles written by Guild members to publish here and on the Website. If you're interested, either email Bill Johnston at Johnston@everestkc.net or Kevin Thomas at kv1014@sbcglobal.net

WE WANT YOUR PICTURES!!

If you've got that project that you're just dying to show off to your fellow guild members, but it's too big to bring to the meeting, send us your pictures. If you've made an outstanding jewelry box, but your significant other won't let you bring it to the meeting, send us your pictures. We want pictures, of your work, to proudly display on the Guild's website. We're building a Gallery on the website to show guild members and the world what great craftsmen and women we have in the Kansas City Woodworker's Guild. But we need those pictures.

Just send your pictures along with a brief description to either our Webmaster William Johnston at Johnston@everestkc.net or Editor Kevin Thomas at kv1014@sbcglobal.net. If you can't send them e-mail bring them to a meeting and we will scan them and get them back to you at the next meeting. So get those cameras going.

Wanted: Your Presentation

It you have a demonstration you'd like to share with the other members of the Guild, now's the time to step up. Bill Evans is putting together programs for the coming months and your help is needed. If you would like to put on a program or have an idea for a program please contact Bill at the next meeting or call him at 816-847-2318 or email at billevangv@aol.com.

Show and Tell



Aaron Menning– Child's Chair



Bob King– Walnut & Wenge Flag Box



Tim Helfrich– Toy truck and trailer, Car



Ron Lomax– Bedside Lamp and night light



Anthony Harris– Saturn Box, Sphere, & Mushroom Box



Mac Dressler– Sample veneered panel from large gun display cabinet



Calvin Hobbs– Side Chair



Calvin Hobbs– Chippendale Dressing Table



Mac Dressler– Large Gun Display Cabinet



P.O. Box 413922
Kansas City, MO. 64141

Meeting Minutes

News / Business:

Member **Cliff Bell** had surgery on Tuesday Feb. 19th and he is now recuperating. Please feel free to call Cliff. Any words of encouragement would be appreciated.

President **Jim Bany** gave thanks to those that worked the tool show. The general sentiment was it was successful.

John Johnson gave an overview/update on the Andre's bench and table project. Everyone in the guild is encouraged to participate. Teams are currently being formed

Visitors: Gary Barth, Larry Welling, Chuck Hanson and new sponsor **Cedar Creek Sawmill** owner **Fred Jones** from De Soto KS

Raffle Winners:

White ticket winner – John Johnson- Freud 3 ¼ VS plunge router.

Terry Stair- Bessey clamp set

Kevin Thomas- Digital calipers

Bill Evans- Hearing protection

John Ritchie- Wilton clamp set

Mike Cotentim- 30 Pc. router bit set

Larry Morse- Taper drills

Russ Amos- Dozuki saw

Jay Nichols- Set of box clamps

Roger Grout– 6 Walnut Boards donated by Cedar Creek Sawmill

Show and Tell:

Aaron Menning built a child's straight chair from oak with an upholstered seat. Aaron used an oil-urethane finish.

Calvin Hobbs brought a Chippendale dressing table built from mahogany and white pine and a side chair made from mahogany and southern yellow pine. Calvin used aniline dye on both pieces and top coated with lacquer on the chair and shellac on the dressing table.

Tim Helfrich built 3 toy semi tractor and trailer rigs from purple

Calendar

Executive Meetings, 7:00pm Kansas City Public Library 1410 W 10th St. KC MO 64105

Guild meetings, 7:00 p.m., Jacob's Well Church, 1617 W. 42nd St., To reach us "during the meetings, call: KCMO. (816) 561-8177

Executive Meetings

Guild Meetings

2008

January 2nd
February 6th
March 5th
April 2nd
May 7th
June 4th
July 2nd
August 6th
September 3rd
October 1st
November 5th
December 3rd

January 16th
February 20th
March 19th
April 16th
May 21st
June 18th
July 16th
August 20th
September 17th
October 15th
November 19th
December 17th

All members are welcome at any board meeting. A call to one of the Officers is all that is necessary.

heart, walnut and golf tee's. Tim scaled the tractor-trailer plans down to match the tires and wheels he had.

Ron Lomax built a night light from cherry and painted accent pieces. He used a Watco natural oil finish and wax.

Anthony Harris brought two turned objects. 1. Saturn box & sphere made from a Banksias pod and giant palm nut. He finished it with lacquer. 2. Mushroom box made from a Banksias pod and finished with lacquer.

Bob King built a flag display case from walnut and wenge. It was joined with splines and finished with lacquer

Mac Dressler brought in photos and a walnut veneered panel from a large gun display cabinet he made for a client.