



# Wood Words

Kansas City Woodworkers Guild [www.kcwoodworkersguild.org](http://www.kcwoodworkersguild.org)

Volume 23 Issue 12

December 07

Guild Meetings:  
Jacob's Well Church,  
1617 W. 42nd St.,  
KC Mo. 64111

**Don't Forget the  
2x4  
Contest**

## DIRECTORS-OFFICERS:

**President:** Jim Bany  
(913) 341-3559  
[jimbany@aol.com](mailto:jimbany@aol.com)

**Vice President:** Mike Jones  
(816) 204-6406  
[mikej@completehomeconcepts.com](mailto:mikej@completehomeconcepts.com)

**Secretary:** Phil Akers  
(816) 320-3780  
[pakers@ford.com](mailto:pakers@ford.com)

**Treasurer:** Aaron Menning  
(913) 707-1000  
[aaron@menning.com](mailto:aaron@menning.com)

**Events:** Roger Grout  
(913) 829-4654  
[grout@weitz.com](mailto:grout@weitz.com)

**Communication:** Nan Melton  
(913) 831-9809  
[nan\\_luvbeachtravel@yahoo.com](mailto:nan_luvbeachtravel@yahoo.com)

**Sponsorship:** Kevin McAndrew  
913 381-5714  
[kjmkevmack@bigfoot.com](mailto:kjmkevmack@bigfoot.com)

**Membership:** Wayne Suter  
816 916-6230  
[wlsuter@earthlink.net](mailto:wlsuter@earthlink.net)

**Training:** John Johnson  
(913) 642-0054  
[johnsonje@bv.com](mailto:johnsonje@bv.com)

**Education:** Bill Evans  
(816) 847-2318  
[billevans@aol.com](mailto:billevans@aol.com)

**Video:** Don Kruse  
**Books:** George Rexroad

**Editor:** Kevin Thomas  
[kv1014@sbcglobal.net](mailto:kv1014@sbcglobal.net)  
**Webmaster:** William Johnston  
[johnston@everestkc.net](mailto:johnston@everestkc.net)

**Next Meeting: Wednesday December 19th, 7 PM**

**Program: Annual Christmas Party**

## Sawdust: The Presidents Corner

*Jim Bany*



Christmas has come early for me this year. This past week, my Dad came to stay with us for Thanksgiving. He lives with my brother in Houston, Texas, so I don't get to spend as much time with him anymore. Dad is 88 and his short term memory is fading fast. He is in the beginning stages of Parkinson's disease, so his hands shake more than they used to. Dad's hearing is pretty much gone and he can't stand cold weather anymore.

For the past 15 years, every time we get together, we go into the shop and spend a couple of days working on a project together. If we were building tools or jigs, we always built two, so he could take one home with him. If it were a furniture project, it was always great fun deciding who we were going to give it to. When I would come home from work, Dad would be tinkering

in the shop waiting for me.

In the last couple of years, his hands and hearing impairments have dampened his enthusiasm. It's a stretch for him to use a scroll saw now. I was a little apprehensive about suggesting a project when he arrived. But when I suggested looking for a project to do, I could see the old spark in his eyes and the old enthusiasm was back.

We found the cutting board project in the current *Woodsmith* magazine and decided to go for it. We went over to Metro Hardwoods, purchased the material, and got started the same day. The gift for me was I got the old Dad back. What a fabulous time we had. Dad commented, when we started, "This might be the last time we get to do this, so let's make the most of it."

We talked about the projects that we have done in the past and he asked about some of the pro-

jects I hope to do in the future. But what we both realized is, what we were

PLEASE PATRONIZE OUR  
SPONSORING MEMBERS



[www.Shop.MontereyWoods.com](http://www.Shop.MontereyWoods.com)



**Home Storage Solutions**  
(816) 916-6230



**Elmwood Reclaimed Timber**  
(816) 532-0300



**Liberty Hardwoods**  
(816) 231-0852



**Paxton Woodcrafters**  
(816) 483-0659



**PlansNow**  
[www.PlansNOW.com](http://www.PlansNOW.com)



**Schutte Lumber**  
(816) 753-6262



**Strasser Hardware**  
(816) 236-5858



**Klockit**  
800 556-2548



**Wood By Design**  
(913) 962-0159



**Woodcraft Supply**  
(913) 599-2800



**Woodline**  
(800) 472-6950



**Microplane**  
800 555-2767



**Ozark Lumber**

doing in the present, is what we were really enjoying. How tight the glue lines are and the getting the sanding marks out of the end grain. Watching the sawdust come off the Tablesaw blade and the shavings roll off my smoothing plane. How easy it is to change sanding belts on my home built edge sander. Putting a smooth finish on the cutting boards and how they looked when we were done.

Dad packed the cutting boards in his luggage to take back to Houston with him, to give away as Christmas presents. Chances are he might not remember the fun we had building them. But, it's one project I will remember always. What a Christmas present!

I will be on vacation over the Christmas holidays, going to visit my wife's family in Australia. So I want to wish everyone in the Kansas City Woodworkers Guild a Merry Christmas and a Happy New Year. So what's going on in your shop? Right now?

**Editor's Note:** Due to a scheduling conflict or a slow boat from China, the folks from Steel City Toolworks were unable to be with us for our November meeting. They will however be joining us sometime in 2008. We hope.

## **Program: BIG PROJECTS** with Mike Jones, Russ Amos, and John Freeland

By Shelly Taylor

November's demonstration was all about the BIG PROJECTS that some of our woodworkers take on ... way too big, of course, to bring in for show and tell. So how do you share your work when you've built a bell tower, a large kitchen, or several pieces of Mission style bedroom furniture? Mike Jones, Russ Amos, and John Freeland did just that with the use of digital photos, a computer and a large screen. The projects that they presented to us were simply incredible!

Mike's big project all started with the buying of a large bell by a woman who wanted a bell tower built for St. James Catholic Church that she and Mike attend. The bell tower was to be dedicated to her late husband. Well, that bell sat for years and years on railroad ties at the back of the church until Mike thought, heck, somebody's got to build that tower and it might as well be me! And so he began the biggest building experiment of his entire career.

The finished bell tower stands on piers set two feet above the ground (and sunk 6 feet deep into the

ground), and rises 12 feet to the top of the deck. It is 8 feet wide at the base and 6 feet wide at the top. The bell – 32 inches wide and 36 inches tall – hangs in its A-frame assembly atop the deck and the entire tower weighs in at more than two tons of wood and iron! Of course, there were many steps Mike took to get to the point of completion, including devising a plan according to city code, ordering \$6000 dollars worth of milled 10x10 Douglas Fir timbers from Schutte Lumber - plus more to accommodate mistakes, designing steel plates to fit over the joints, learning metal working to assist in making the frame to hang the bell, assembling legs and braces off site, and erecting the tower on site with the help of a few good men and a crane.

Mike's greatest building challenge was getting the close, tight joints that he wanted for the bell tower. All the cutting of the wood had to be done with a chain saw and so Mike had to lower his expectations considerably of being able to do any fine joinery with this particular project. Though he cut the tower legs and cross braces exactly the same, nothing fit together exactly the same and some joints had gaps. The steel plates that Mike engineered came into play here, fitting just right over the joints and ensuring the structural integrity of the bell tower.

Mike's payoff for this massive project came when the woman who wanted the tower erected in memory of her husband cried tears of joy hearing the bell ring for the first time.

Russ Amos was up next, showing us his beautifully remodeled kitchen. His big project all started when his kitchen ceiling fell to the kitchen floor while Russ and his wife were on vacation. For nine long days, water from broken plumbing rained into the Amos kitchen, destroying sheetrock and cabinets and making a total mess. Well, Russ had always planned to remodel his kitchen and now seemed to be as good a time as any to start!

As always, Russ drew his design by hand. Some 6 tries into it, with his wife changing her mind on this or that detail, he obtained her approval and got started. Eight months later, they had a kitchen worthy of a feature in Architectural Digest!

Using his workshop, as well as his rec room for a staging area, Russ built cabinets and doors, drawers and fronts, and tall pantries in sections before moving them into the kitchen. To increase space for the cabinets, Russ removed the sliding glass doors from one kitchen wall and replaced them with a single window. The center of the kitchen features a

cooking “island” that Russ built and tiled in granite, along with a table angling out from its side. A bench with cubbies for shoes is by the kitchen back door while a desk area has cubbies for mail. Everything is completely customized, including sectioned drawers and cabinet inserts that perfectly store the Amos silverware, dishes, pots, and pans, and a wine rack is built into a cabinet wall. In essence, Russ changed nearly everything about his kitchen, save the placement of the sink and dishwasher.

A special feature of Russ’ kitchen is the cabinets and drawers. They are made of maple, while the doors and drawer fronts are framed in maple and faced with quarter inch hickory panels. Russ matched the light and dark pattern of the hickory grain to run continuously across the cabinets and drawers of the kitchen, necessitating the use of 50% more hickory to do so.

A challenge Russ encountered in the rebuilding of his kitchen was finding that the floor was uneven, with a two-inch difference from one side of the kitchen to the other. Or maybe it was the ceiling that wasn’t even. It was hard to tell! Either way, it meant cutting out the base of the pantry cabinets to fit the floor ... or the ceiling.

Last up for the evening’s show was John Freeland. John began his big project in 2002, building a complete set of bedroom furniture that he and his wife had desired for some time. Since John had finally retired, he now had time to get to work! Nearly four years later he had completed eleven pieces of Mission style furniture in beautiful white oak. This included a bed with thirty-five spindles each across the headboard and the footboard, an armoire, a dresser, a blanket chest, a bookshelf, an end table, and a desk with a bench seat. The armoire doors and dresser drawers feature reproduction hammered copper pulls and handles of the early 1900s. John also made the bedroom clock, two table lamp stands, and a floor lamp, all in the Mission style. Together, he and his wife even made the stained glass shades for the lamps. We kept thinking that John had finished his last furniture slide and then there’d be yet another! It was simply amazing.

Before beginning any of the building, John first did quite a lot of research into the Mission style of furniture that he wanted. This style, also referred to as Arts & Crafts or Craftsman, came about in the late 1800s in response to the mass-produced furniture being made at the time. Woodworkers got together to go back to the old way of making furniture of high quality, piece by piece. They endeavored to make the style simple enough to be affordable with straight lines, gentle curves, and no carv-

ing. In fact, it was their “mission” to do so—hence the name. John then referred to Stickley catalogues for the furniture designs that he actually used.

John’s greatest challenge in building eleven pieces of furniture was that he cut the wood for several pieces at a time, making his workshop so crowded that he barely fit into it himself. In retrospect, he wishes he had simply started and completed one piece at a time. Another challenge was encountered in moving the finished and quite heavy furniture from his basement workshop to his upstairs bedroom. He found that the easiest way to accomplish such a feat as carrying a massive armoire up a flight of stairs was to hire a couple of guys to do it for him!

Hats off to Mike, Russ, and John for their outstanding work. They are an inspiration to us all!

## THE GALLERY

It was brought to my attention after the November meeting, while partaking in gourmet burgers and quality malt beverages, that I may not have explained myself well enough, in regards to the Gallery. Since I am one to often suffer from foot in mouth disease when speaking in front of more than two people, let me try to explain it again. Without the crowd.

As I stated at the meeting, one of the main objectives is to give a forum for those projects that are just too big to bring in for Show and Tell. It’s important that these projects get the same exposure as anything brought in to a meeting. But what we would also like to do is set up on the website where any of your projects can be viewed by other guild members or for that matter, the rest of the world. We want to be able to show the world what kind of craftsmen and women we have in the Kansas City Woodworkers Guild. Only stipulation is it must be your own work and no copyrighted material maybe submitted.

Either email your photo, with a brief description, to either William Johnston at [johnston@everestkc.net](mailto:johnston@everestkc.net) or to Kevin Thomas at [kv1014@sbcglobal.net](mailto:kv1014@sbcglobal.net). Or if you don’t have email, bring us your photo at a meeting and we’ll make sure it gets to the website.

So help us make this Gallery a success. Send in those pictures today.

*Kevin Thomas—The Editor*

## Membership Benefits

It's that time of year to start considering renewal of your Guild membership. So here is a reminder of our 4 different levels of membership and their annual fees

### Member - \$35

#### Benefits

- \*\* Demonstrations
- \*\* Exchange of Knowledge
- \*\* Fellowship
- \*\* Free access to the Guilds Video & Print Library
- \*\* Lectures and/or Demonstrations from Master Woodworkers
- \*\* Mentoring Program
- \*\* Monthly Newsletter
- \*\* Tool Reviews
- \*\* Safety Programs
- \*\* Community Service Programs
- \*\* Purchase Discounts
- \*\* Auctions
- \*\* Guild Membership Directory (Coming Soon)

### Senior (Over 65)- \$25

- \*\* All regular Member Benefits

### Associate Member- \$50

An Associate Member is an Individual that is led through the Fellowship and Learning of the Guild to step up their Membership as a means of Thanks. The following additional benefits will be awarded to these individuals as a Thank You from the Guild back to them as the Guild's way of saying Thank You for the additional support.

- \*\* All Regular Member Benefits– Plus:
- \*\* 20% discount on Guild Activities (trips, seminars, & training)
- \*\*20% discount on Guild Merchandise

\*\*Personal Space made available on the Guild's web site

### Sponsor- \$100

\*\* All Regular Member Benefits (for 1 person)- Plus:

\*\*Advertisements in the Guild's Monthly Newsletter, the Guilds Website, and the Membership Directory

\*\*Tax write off for yearly dues

\*\*Access to Membership through Newsletter, Web Site, and Membership Directory.

### Reminder- 2 x 4 Contest

1. The item can be anything the craftsman wants it to be
2. The Item should be made out of any species of wood that the Craftsperson want to use. They are allowed the equivalent of an eight foot 2x4 in materials
3. The voting for the contest will be conducted at the December 19th, 2007 general Guild membership meeting.
4. Each person attending the December meeting will be given one (1) marble and after the presentation of the projects by their makers and during the meeting break, each person, in attendance, will be asked to vote for their favorite piece by placing their marble in the receptacle that is sitting next to that piece.
5. The marbles will be counted after the voting has completed and the winners will be announced.

**1st Prize- \$100.00**

**2nd Prize- \$50.00**

**3rd Prize- \$25.00**



**Member of the Year**  
Who will it Be?



**George Rexroad**



**Aaron Menning**



**William Johnston**



**John Van Goethem**



**Chuck Slagle**



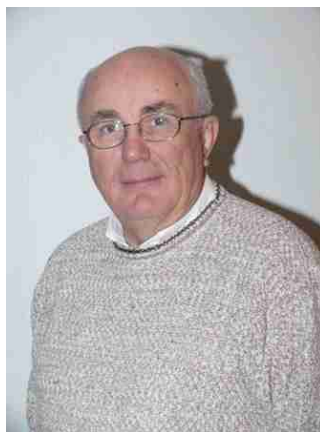
**Paul Twenter**



**Brian Kemp**



**Neal Shoger**



**Bob LaDue**



**Cliff Bell**

## Antique Tool of the Month

By Don Kruse

### Ratcheting Hand Drill

This month's tool is a little hand drill patented by Hendrick Julius Hjorth of Boston, Mass. The patent date on the drill is June 11, 1895. The drill was called the "AUTO HAND DRILL" and was made by the BEST TOOL CO. BOSTON, MASS. Both of these names and the patent date are stamped on the drill.

The drill is operated by gripping the round wooden ball and pulling and releasing the tension in the leather thong. A ratchet mechanism rotates the chuck on the pull and rewinds when released.

I have seen almost identical drills marked Goodell Pratt.

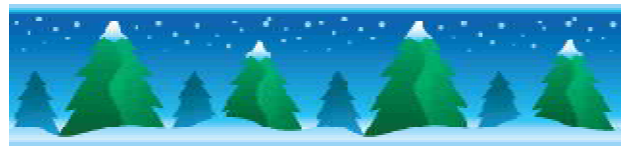
Due to the Holiday Party, at the December meeting, I will bring this tool to the January meeting for show and tell.



Want to help cut guild monthly costs? Consider receiving the newsletter via email. It is faster and comes in color. If you are interested, please send an email to William Johnston at: johnston@everestkc.net, or add your email to the Attendance list at the monthly meetings.

## 2007 Christmas Party: Are You Coming?

In case you didn't make it to the November, we're in for a real treat at the Christmas Party this year. Our own **Chef David Roth** will be catering this year's festivity. We should be in for a gourmet delight. The only thing we need to know is: Are you coming? We need as accurate as possible head count so that no one goes unfed. So if you weren't at November's meeting and didn't give your number of guests, we need your call.. Please contact our VP **Mike Jones** at (816)204-6406 or by email at mikej@completehomeconcepts.com. Let us know if you're coming.



## TREASURY REPORT

(December 2007)

**Beginning Balance-** \$5636.19  
**Income-** \$462.00  
**Expenses-** \$634.55  
**Ending Balance-** \$5466.64  
**Paid Members-**  
**Senior-**36  
**Regular-**70  
**Associate-**10, **Sponsor-** 2

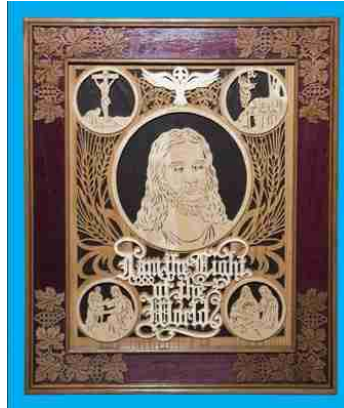
## Wanted: Your Presentation

It you have a demonstration you'd like to share with the other members of the Guild, now's the time to step up. Bill Evans is putting together programs for the coming months and your help is needed. If you would like to put on a program or have an idea for a program please contact Bill at the next meeting or call him at 816-847-2318

### Show & Tell



**Ron Lomax**– Saddle seat Stool



**Merle Krugman**– Christ scroll sawn wall hanging



**John Van Goethem**– Child's step stool



**David Roth**– Symbol of Mary done in marquetry



**Bill Webb**– Maple sign holder



**John Tegeler**– Maple and Walnut Box



**Jim Bany**– Andre's bench prototype



**Anthony Harris**– Ring Boxes



P.O. Box 413922  
Kansas City, MO. 64141

### Meeting Minutes

Phil Akers

#### News / Business:

The slogan contest will take place at the December Wood Guild Christmas party. All those in attendance will be able to cast their votes at that time.

All members are invited to help with the Wood Guild promotion that will be held at Woodcraft on the first three Saturdays of December. Volunteers will be at the store to hand out fliers and answer questions about the guild.

Anyone wanting to show/share woodworking projects that are too large to bring to the guild meetings can send email pictures to William Johnson or Kevin Thomas to have posted on the Kansas City Wood Guild web site.

#### Visitors:

**Chris Brunner** from Shawnee KS  
**Jim Bany's dad** from Houston, TX  
**Arnie** from Leavenworth

#### Raffle:

Ear muffs- **Tim Helfrich**  
Drillpress hold down clamp- **Steve Erickson**  
Woodcraft apron- **Jim Reynolds**  
Set of box clamps- **Kevin McAndrew**  
Wilton clamp set- **John Tegeler**  
Wixey digital caliper- **Mike Jones**  
170 Pc. drill bit set- **Bill Bysel**

### Show and Tell:

**Ron Lomax** built a stool out of Beech. The stool required building jigs and the saddle seat was a special point of interest.

**John Van Goethem** built a child's step stool out of Red Oak. It has grip cleats for a one hand pick up. The finish is Poly over oil stain.

**David Roth** shared his marquetry symbol of Mary. It is made from a variety of veneers and Fiddle Back Maple. It's finished with shellac and has a half lap miter frame.

**Bill Webb** brought in a Hard Maple sign holder. It has a blonde maple finish.

### Calendar

Executive Meetings, 7:00pm Kansas City Public Library 1410 W 10th St. KC MO 64105

Guild meetings, 7:00 p.m., Jacob's Well Church, 1617 W. 42nd St., To reach us "during the meetings, call: KCMO. (816) 561-8177

#### Executive Meetings

#### Guild Meetings

2007

January 3rd  
February 7th  
March 7th  
April 4th  
May 2nd  
June 6th  
July 11th  
August 1st  
September 5th  
October 3rd  
November 7th  
December 5th

January 17th  
February 21st  
March 21st  
April 18th  
May 16th  
June 20th  
July 18th  
August 15th  
September 19th  
October 17th  
November 21st  
December 19th

All members are welcome at any board meeting. A call to one of the Officers is all that is necessary.

**John Tegeler** brought in his first box project. It's made from Maple with Walnut trim. John used a wipe on oil finish. The challenge was getting it completed.

**Anthony Harris** shared his hand turned ring boxes and a nice block of Lignum Vitae.

**Merle Krugman** brought in a large wall hanging of Christ. The project was made from Oak, Cherry, Maple, Holly, Purple-heart and Pine. The scroll work required 1,167 inside cuts and Merle finished it with wipe on Tung oil.

**Jim Bany** brought in the prototype bench for the Andre's project. It has complementary features to the chairs from last years project along with the tables that will be built. Jim will be presenting the

**Merry Christmas and a  
Happy New Year**

The Editor