



# Wood Words

Kansas City Woodworkers Guild [www.kcwoodworkersguild.org](http://www.kcwoodworkersguild.org)

Volume 22 Issue 12

December 06

Guild Meetings:  
Jacob's Well Church,  
1617 W. 42nd St.,  
KC Mo. 64111

Are you entering the  
2 X 4 contest this year?

Now is the time to  
get your project  
on the road!

## DIRECTORS-OFFICERS:

**President:** Jim Bany  
(913) 341-3559  
[jimbany@aol.com](mailto:jimbany@aol.com)

**Vice President:** Mike Jones  
(816) 204-6406  
[mikej@completehomeconcepts.com](mailto:mikej@completehomeconcepts.com)

**Secretary:** Dave Roth  
913 338-2433  
[chefroth@everestkc.net](mailto:chefroth@everestkc.net)

**Treasurer:** Paul Twenter  
816 781-9407  
[paul@twenter.com](mailto:paul@twenter.com)

**Events:** Roger Grout  
(913) 829-4654  
[grout@weitz.com](mailto:grout@weitz.com)

**Communication:** Nan Melton  
(913) 831-9809  
[nan\\_luvbeachtravel@yahoo.com](mailto:nan_luvbeachtravel@yahoo.com)

**Sponsorship:** Kevin McAndrew  
913 381-5714  
[kjmkevmack@bigfoot.com](mailto:kjmkevmack@bigfoot.com)

**Membership:** Wayne Suter  
816 916-6230  
[wlsuter@earthlink.net](mailto:wlsuter@earthlink.net)

**Training:** John Johnson  
(913) 642-0054  
[johnsonje@bv.com](mailto:johnsonje@bv.com)

**Education:** Chuck Slagle  
913 402-8336  
[slaglecs@earthlink.net](mailto:slaglecs@earthlink.net)

**Video**  
Don Kruse

**Books**  
George Rexroad

**Editor/Web:**  
Wayne Wainwright

**December Raffle:** Bill Evans will have his usual assortment of items

**Next Meeting Wed. December 20th, 7 PM**

**Program: Christmas Party**

## Sawdust: The Presidents Corner

*Jim Bany*



Looking back at Christmases past I'm trying to remember all the presents I've made in my shop over the years.

Seems the one constant is I always start with the grandest intentions and plans but time usually runs out.

My first project was when I was back in college. I couldn't afford much back then so I was building my parents a pair of plant stands. I can still recall my wife telling me to hurry with the assembly because all the rest of the presents had been given out.

Another time I made an intarsia project to give to my boss at the time. He always wore cowboy boots. I found this intarsia design that was a pair of dilapidated cowboy

boots that matched his perfectly. It was only the second time I had ever tried intarsia so it took a lot longer to complete than I expected. To speed up the process I used some spray can lacquer that was ten years old. An hour later the lacquer hadn't setup yet but I wrapped it up anyway. My boss who had a cigar in his mouth, when he opened the box saw this blue flame before his eyes. Wasn't my greatest moment.

My two daughters have been able to talk me into anything, so I've done my share of presents for boyfriends.

One year I built a chessboard for a future boyfriend. He must have been impressed because she dated him for a full year. Then she wanted a set of night stands for another boyfriend. Hope she settles down soon. Of course then my old-

est daughter wanted a set stools one year. I had one completed by Christmas but I didn't get the other done until Febru-

PLEASE PATRONIZE OUR  
SPONSORING MEMBERS



**Artistic Endeavors**  
(816) 916-6230



**Elmwood Reclaimed Timber**  
(816) 532-0300



**Liberty Hardwoods**  
(816) 231-0852



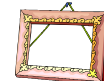
**Paxton Woodcrafters**  
(816) 483-0659



**PlansNow**  
[www.PlansNOW.com](http://www.PlansNOW.com)



**Schutte Lumber**  
(816) 892-3398



**Strasser Hardware**  
(816) 236-5858



**Klockit**  
800 556-2548



**Wood By Design**  
(913) 962-0159



**Woodcraft Supply**  
(913) 599-2800



**Woodline**  
(800) 472-6950



**Microplane**  
800 555-2767



**Ozark Lumber**  
479 253-5994

ary. I was reminded about being late till Thanksgiving. Last year I made breadboards for a gift exchange. I thought I was being inventive by adding a handle to the breadboards. They were mistaken as paddles.

So this year I volunteered to build a coffee table and end tables for my oldest daughter. Instead of surprising her I asked what she wanted for a design and a finish. Good thing I did because I would have never picked what she wanted. Now I just have to get it done. So what's going on in your shop?

### Program:

David Roth

Chuck Slagle introduced Greg Godbout from Dewalt and Porter Cable services.

Greg talked about a new product that Porter Cable has. Porter Cable fixes, refurbishes and sells tools, but at 92nd and Quivera, they only do repairs, and carry accessories, like router bits, sandpaper, pads for your sander, router wrenches and collets.

A lot of items of Dewalt were discontinued. They do a lot of repair work on the batteries on the drill and have a seven to ten day turn around time.

They also work on air compressors - both the oil and the dry machines as well as the pancake style as well as the Porter Cable and Dewalt air tools.

They also work Bosch, Skill, and Ryobi tools as well. They do not work on Sears or Rigid tool products. But they will do most competitive brand products.

Greg talked about the 2 ½ in belt sander that they now have. This replaces the small hand plane that they used to have. It is double insulated and it is 15 amps. The belts come in packages of 2 and 5.

Also their new sanders have 8 holes in the sandpaper and they all have dust collectors built in. They will have sticky back and hook and loop.

Greg brought in some catalogs and will have more at the next meeting.

Someone asked is it ok to use an air compressor on the motors of a table saw. He said it will not hurt any thing it is also good to do that on routers, and belt sanders.

Someone asked what do people do wrong most often on their corded and battery tools.

The biggest problem with battery tools is people use them as if they were a corded tool. Also with the new batteries, Greg suggests that when you charge your battery and are working on a job, use it until it runs low then let that battery cool down and then charge it. While that first battery is cooling down install the second battery. If you change the drill battery between jobs you short charge the battery.

With electric tools the most common problem is people use an extension cord power with a small wire.

The new belt sanders have a graphite pad now compared to the steel. Mike Jones had a job in Nebraska and bought a lot of tools for the job.

Dewalt 18 volt Hammer Drill, Roto Hammer, Impact drivers. He bought ten batteries. Some will hold a charge pretty good and some will not hold a charge for an hour. Mikes question was, is there any way to get those batteries back corrected to a starting point. Greg said no.

Greg works on some of the battery drills, but he says that they might be a normal battery that has gone bad. Dewalt can check the batteries out at the shop but will take a few hours to run the test and if they have the year 2005 on the battery they might still be under warranty.

Portable Cable was a company that was a finishing company. They made great sanders, and great routers, Belt sander, cordless drills.

With Dewalt Greg said he would buy the Dewalt drill and the Dewalt reciprocating saw.

Greg suggests when buying a router for a router table, to get a router with 3 1/4 horse power. With the speed routers, you can slow them down. They have great big bearing journals inside them, 15 amp motors. That's Greg opinion.

Also with a router this big, run a 20 amp circuit instead of a 15 amp circuit.

**Greg. Thank you for a great program on Porter Cable.**

A reminder to everyone that Guild dues in January are \$35 for members, \$25 for seniors, \$50 for Associate and \$100 for Sponsor per year.

In December, we will have a dinner meeting with spouses or friends who can attend.

For those who wish to contribute the following last names can bring a salad or desert

Last names with A - L - Desert  
Last names with M - Z - Salad

If you have questions, Please call Chuck Slagle at

**913-226-6195**

# FOR SALE

**Incredible Buy!!!!**

Legacy 1200, w/motor 24 Position Indexing, Adjustable Bed ,7-Standard Pitches

Right and Left Hand Drive, 3-Axis Control

**INCLUDES** 3 1/4 hp #7539 Porter Cable router w/Eliminator chuck, an assortment of cutters, design pack, manual, and videos, \$2,300

call Wayne S. at 816-628-4602 please leave message

## Special Member Benefit from



15% off any purchase. Use code: 1F288.  
Expires 12/31/06

## Special Member Benefit from:

**PlansNOW**

Join the PlansNOW Treasure Hunt and win TOOLS!  
Visit PlansNOW.com and click on the PlansNOW Pirate for details.

And while you're there, use your 15% discount on all the plans and techniques in the store.

**Your e-coupon word is: KCGuild**

Read more about our newest Sponsor on our web site or visit them at: [www.PlansNOW.com](http://www.PlansNOW.com)

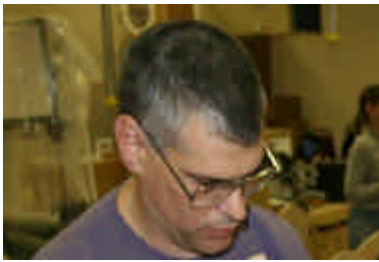
## Member of the Month

By Nan Melton

As has become our new tradition, we will select a Member of the Year for this spot. One member will be selected by the other winners and will be announced at the Christmas meeting to receive their award.

In the mean time, here is a look at our contributors of the past year. Thanks to each of you!

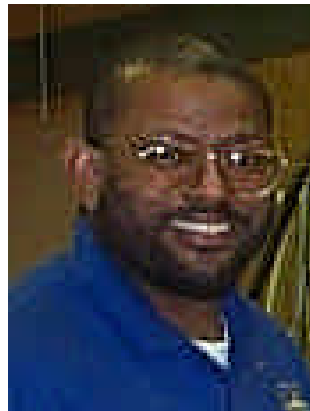
John Johnson



Terry VanDyke



John Morrison



Wayne Wainwright



Don Kruse



Bob King (snuck by with no picture)

Bill Evans



## Membership Benefits

The four levels of Membership and annual fees

### Member - \$35

#### Benefits

- ?? Demonstrations
- ?? Exchange of Knowledge
- ?? Fellowship
- ?? Free access to the Guilds Video & Print Library
- ?? Hands-On Workshops
- ?? Lectures and/or Demonstrations From Master Woodworkers
- ?? Mentoring Program
- ?? Monthly Newsletter & Website Access
- ?? Tool Reviews
- ?? Safety Programs
- ?? Community Service Programs
- ?? Purchase Discounts
- ?? Auctions
- ?? Guild Membership Directory (coming in 2007)

### Senior - \$25 (Over 65)

- ?? All Regular Member Benefits

### Associate Member - \$50

An Associate Member is an Individual that is led through the Fellowship and Learning of the Guild to step up their Membership as a means of Thanks. The following additional benefits will be awarded to these individuals as a Thank You from the Guild back to them as the Guilds way of saying Thank You for the additional support.

- ?? All Regular Member Benefits - Plus:
- ?? 20% discount on Guild Activities (trips, seminars, & training)
- ?? 20% discount on Guild Merchandise
- ?? Personal Space made available on the Guild web site

### Sponsor - \$100

- ?? All Regular Member Benefits (for 1 person) - Plus:

- ?? Advertisements in the Guilds Monthly Newsletter, the Guilds Web Site, and Membership Directory
- ?? Tax write off for yearly dues
- ?? Access to Membership through Newsletter, Web Site, and Membership Directory

## Reminder - 2 X 4 Contest



1. The item made can be anything the craftsperson wants it to be.
2. The item should be made out of any species of wood that the craftsperson wants to use.
3. The voting for the contest will be conducted at the December 15, 2004 general Guild membership meeting.
4. Each person attending the December meeting will be given one (1) marble and after the presentation of the projects by their makers and during the meeting break each person in attendance will be asked to vote for their favorite piece by placing the marble they have been given into the receptacle that is sitting next to each piece.
5. The marbles will be counted after the voting has been completed and the winners will be announced.

**1st Prize - \$100.00**  
**2nd Prize - \$ 50.00**  
**3rd Prize - \$ 25.00**

## Tool of the Month

### ANTIQUe TOOL OF THE MONTH

DECEMBER 2006

By

DON KRUSE

These two saws feature the May 12, 1856 patent of Jackson Gorham from Bairdstown, GA and the May 18, 1858 patent of Hiram Smith from Camden, NJ. The first of these patents was for a saw that doubled as a square. The second was an improvement on this idea. It fastened the brass shoulders on the handle directly to the blade, thus improving the stability and the accuracy of the square. From looking at the patent drawings, the scribe that is in the handle of each of these saws was also part of Smith's patent. Both of these patents were assigned to Henry Disston.

The top saw pictured has both patent dates, the blade has the Jackson Gorham name and patent date on the blade and the Hiram Smith name and patent date of the brass plate on the handle. This saw is model number 27. Saws with the Jackson Gorham name appear in Disston's early catalogues. I have not been able to find out what dates they were sold.

Since both of these saws come from a tool chest whose owner retired in 1878, I am sure it dates before that year.

The lower saw has the name HENRY DISSTON on the blade and the model number 42. It also has the Hiram Smith name and patent date on the brass guard. Since the name of the company changed to HENRY DISSTON & SON in 1865, this saw dates between 1858 and 1865.

These saws were made in a more expensive model that included a level and plumb as part of the brass guard and also in a cheaper model that did not have the brass guard at all



### Show & Tell



**Jim Bany** Sam Maloof table with powered turquoise inlay

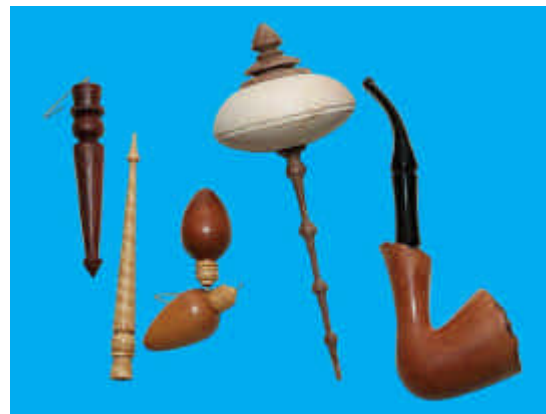


**Unknown**

**Anthony Harris** Big spindle, Pipe and Christmas ornaments



**Shelley Taylor** shaker style table





P.O. Box 413922  
Kansas City, MO. 64141

### Meeting Minutes

#### News / Business:

Wayne W. mentioned that Tim Fairburn had some items for sale. The Walnut, Cherry, much of the Oak and the Sprayer has been purchased. Tim has some more Walnut and some Oak available. The Oak is at Wayne's shop but you will need to contact Tim ((660) 476-2739) about the Walnut. Tim will be in Europe from Dec 17th - Jan 11th.

Wayne Suter is working on a new band saw box and is going to try and bring it in to the meeting next month.

Russ Amos is talked about the Bosch driver. He showed how the eternal light is works , and two batteries and two batteries and cost 130.00 Bosh driver 400 rpm driver. It also is variable speed.

#### **Look for the KCWG Sweat Shirt and Shirt Combo \$35**

#### **TICKET RAFFLE**

Jim Reynolds won the Bosh screwdriver drill, Aaron Menning won the saw and the dead blow hammer, Dan Hurley won the Forstner bits, William Johnston won Laser measuring unit, Ken Sokol won the transfer punches, Rob won the box clamps, Krista Graham won the screw driver, Bob Settich won the file handles.

#### Show and Tell:

**Frank Lane** made a Queen Size bed making 76 square spindles. Quarter sawn white oak. And made the head board as well. Stickly style bed. And has a Varnish finish.

**James Childress** brought in a picture of a bent hand rail. With all of the clamps on it. Had many buckets of 5 gallon bucket of clamps. Had a picture of the curve beam and a arch header. Made from cherry wood. He also made the windows. Which were curved.

**Wayne Suter** brought in some pictures of his summer project that he worked on it is a Combination Café, coffee shop, and scrap booking store. All fixtures and cabinets laminate Wayne made in about three weeks.

**Shelley Taylor** showed the shaker style table she made in class. And explained the way she made it and finish it. She had a good learning experience with it. She painted it.

### Calendar

Executive Meetings, 7:00pm Kansas City Public Library 1410 W 10th St. KC MO 64105

Guild meetings, 7:00 p.m., Jacob's Well Church, 1617 W. 42nd St., To reach us "during the meetings, call: KCMO. (816) 561-8177

#### Executive Meetings

#### Guild Meetings

2006

January 4th  
February 1st  
March 1st  
April 5th  
May 3rd  
June 7th  
July 5th  
August 2nd  
September 6th  
October 4th  
November 1st  
December 6th

January 18th  
February 15th  
March 15th  
April 19th  
May 17th  
June 21st  
July 19th  
August 16th  
September 20th  
October 18th  
November 15th  
December 20th

All members are welcome at any board meeting. A call to one of the Officers is all that is necessary.

**Jim Bany** showed the table he made for his church auction. It is a Sam Maloof design and is made out of mahogany. Herald put a inlaid into it. The inlaid is powered turquoise. It's a product called inlays.

**Anthony Harris** brought in a big spindle from his lathe. He also built his lathe. It is the Harris 3001 Lathe. It will turn 30 inches in diameter and is 10 feet long.

He also had a pipe that he made. And has a wax finish. The stem he thinks could use some more flair. He also had Christmas ornaments that he made at woodcraft.

**Don Kruse** showed a 1883 Steers plane. This month's tool is a drill brace that is adjustable. This was made 1n 1905.