



# Wood Words

Kansas City Woodworkers Guild [www.kcwoodworkersguild.org](http://www.kcwoodworkersguild.org)

Volume 22 Issue 01

January 06

Guild Meetings:  
Jacob's Well Church,  
1617 W. 42nd St.,  
KC Mo. 64111

**Remember: 2006  
Dues are \$35 or  
\$25 for Seniors**

## DIRECTORS-OFFICERS:

**President:** Wayne Wainwright  
816 453-1073  
[wrrig@kc.rr.com](mailto:wrrig@kc.rr.com)

**Vice President:** Jim Bany  
913 341-3559  
[Jimbany@aol.com](mailto:Jimbany@aol.com)

**Secretary:** Dave Roth  
913 338-2433  
[chefroth@everestkc.net](mailto:chefroth@everestkc.net)

**Treasurer:** Paul Twenter  
816 781-9407  
[paul@twenter.com](mailto:paul@twenter.com)

**Events:** Mike Jones  
816 204-6406  
[sportsturf@kc.rr.com](mailto:sportsturf@kc.rr.com)

**Communication:** Brian Kemp  
816 455-8892  
[b.kemp@earthlink.net](mailto:b.kemp@earthlink.net)

**Sponsorship:** Kevin McAndrew  
913 381-5714

**Membership:** Terry Stair  
816 765-7296  
[tandkstair@aol.com](mailto:tandkstair@aol.com)

**Training:** Ken Sokol  
913 441-6060  
[kensokol@yahoo.com](mailto:kensokol@yahoo.com)

**Education:** Chuck Slagle  
913 402-8336  
[slaglecs@earthlink.net](mailto:slaglecs@earthlink.net)

**Video**  
Don Kruse

**Books**  
George Rexroad

**Editor/Web:**  
Wayne Wainwright

**January Raffle:** Bill Evans will have his usual assortment

**Next Meeting Wed. January 18th, 7 PM**  
**Program: Jim Bany - Making a Home Sanding Machine**

## Sawdust: The Presidents Corner

*Wayne Wainwright*



Can you believe it? 2006 is upon us.

After a successful 2005, we now have our sights on a great 2006.

Well, once again, we must show our appreciation to the Slagle family. The Christmas party was great by all counts and the food was excellent! Thanks Chuck for coordinating another wonderful event.

Congratulations to our annual award winners. Bill Webb - Lifetime Member, Chris Kunzle - Contributor of the year and Mac Dressler - Member of the Year.

With all the contributions made by our many members each year, it is always difficult to pare it down to a few for recognition, but these people

have shown a serious commitment to our organization. Their contributions have "made a difference" and we want them to know how much we appreciate their efforts.

Please take the time to say "thanks" the next time you see them. These are well deserved awards as their contributions have made us a much better Guild.

This year's 2 X 4 contest winners also made a big splash! I was supremely impressed with Aaron's workbench and that was validated by your choosing him as the overall winner, but again, each entry was excellent this year.

I'm very glad to see this tradition develop and appreciate the leadership of Erl Poulin, Wayne Suter and everyone else who had a hand in starting it up or keeping it going each year.

So where do we go from here? We are almost complete with the chair project. We had a few "splits" in our chairs and

PLEASE PATRONIZE OUR  
SPONSORING MEMBERS



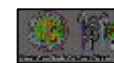
**Accent Merchandising.**  
(816) 635-5792



**Elmwood Reclaimed  
Timber**  
(816) 532-0300



**Liberty Hardwoods**  
(816) 231-0852



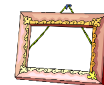
**Paxton Woodcrafters**  
(816) 483-0659



**PlansNow**  
[www.PlansNOW.com](http://www.PlansNOW.com)



**Schutte Lumber**  
(816) 753-6262



**Strasser Hardware**  
(816) 236-5858



**Klockit**  
800 556-2548



**Wood By Design**  
(913) 962-0159



**Woodcraft Supply**  
(913) 599-2800



**Woodline**  
(800) 472-6950



**Microplane**  
800 555-2767



**Ozark Lumber**  
479 253-5994

did not quite complete the order, but we have a plan to complete them soon.

The 2006 Woodworking Show and the Remodeling shows are upon us as well. Mike Jones is leading the effort for these events. If you would like to help staff or demonstrate at the Woodworking Show, Feb 3rd - 5th, and/or would like to help staff the Remodeling show Feb 10 - 12, please contact Mike Jones at (816) 415-9888 ASAP.

Wayne Suter is planning the 2006 CRP. If you are interested in participating, please contact him (or any of the officers) to get your name included in the next orientation.

A review panel will be held on Wednesday January 25th for those of you who are already involved in the program. If you have a piece to be reviewed, please make Brian Kemp aware so you can get an appointment time. The review takes about 30 - 45 minutes per piece.

Ken Sokol is going to kick-off the Mentor Program that we postponed during the Chair Project so look for his signature "flip chart" at the February meeting. If you are interested in "conducting" a mentor session in 2006, please let Ken know.

As many of you know, my wife and I are building a new home in the Northland – actually in Holt Mo., north of Kearney. We expect to move in the end of January. Along with the house came a brand new workshop. I have many months of work to get it in working order, but am targeting a late Spring time period to be the lead shop for a Northland shop tour for the Guild.

If you live in the Northland and would be interested in being on the tour in the late April/May timeframe, please let me know.

### **New Leadership:**

As is our tradition, we will vote at the April meeting on new leadership in 2006. Paul

Twenter has been busily soliciting members for the 2006/2007 slate and has been able to put together a group of very qualified names. I encourage each of those people, to attend the Leadership meetings the next few months to help with acclimation to your new roles.

The vote will be a formal process to solidify these candidates with approval from the membership.

Anyone interested in joining the leadership team, helping in some way or just have an interest in what we discuss behind those "open doors" is welcomed to attend the leadership meetings. Just let one of us know so we can make sure to communicate "where" it will be as it changes from time to time.

### **Special message from Fred Chael:**

Last year, I attempted without success, to pass off leadership of the Guild Dragster Toy Project. Since I feel strongly about this project, I'm trying again.

What is involved? Basically, it is management of the following steps listed in approximate chronological order:

- ?? Solicitation of suitable materials from local sources sufficient for 1,000 - 1,500 dragsters
- ?? Ordering wheels and axel dowels (if required)
- ?? Cutting trapezoidal blanks from strips and assembling into work boxes
- ?? Cutting axels to length from dowels
- ?? Distribution of work boxes to Guild members for cutting dragster shapes, drilling axel holes and routing/sanding corners
- ?? Collecting finished work boxes and finally, directing assembly of wheels and axels at Guild determined site on toy work day

Collectively, these steps may seem a bit intimidating, but believe me, they are not. The key to success is organization of the processes and networking with Guild members.

I will confess, that while I still have a strong passion for this project, I am getting on in years and not as highly motivated as I once was. Therefore, I'd like to pass my role off to a younger member (or team) with lots of drive and enthusiasm. I still want to be involved, but not in a leadership role.

If this extremely worthwhile and "charter-driven" community service project sparks your interest, call me at 816 561-

9036 and let's talk. I'll share this with you - there are few feelings to compare with those of making toys to brighten the Christmas experience for poor and needy kids. Need I say more?

Thanks

Fred

## 2005 2 X 4 Contest

Wayne Suter explained the rules of the 2 by 4 contest. And how to vote.

All those who were present at the meeting were able to vote. You pick one pinto bean and put it in the cup next to the project that you choose.

Jim McCord said that he has 80 whimsy boxes. You can put a pinto bean in his cup and take a box home or you can donate \$12 to the Guild and still take a box home. Thanks Jim For your help.

**Jim McCord** had 80 whimsy boxes made of multiple woods. He brought in enough to "equate" to about a 2 X 4.

**Ed Bergstedt** made a lamp out of a 2 by 4 piece of cedar. Some of the difficulty was the wood splitting.

**James Childress** explained about his bird feeder. And all of the compound angles that were in it. It also had a screen on the bottom to hold the food. The screen is also used so the water can drain after it rains.

**Aaron Menning** made a "mini" workbench that would fit in his shop. It was made from hard maple and the hardest part was trying to find the hardware to make this little bench.

**Anthony Harris** made a "Louisville Slugger" of Ash that he turned on the lathe. The bat is 33 inches long.

**David Roth** made an Intarsia Gothic Arch Window made from a 2 by 4 piece of cherry. This type of architectural work was done in the 12 century. This type of arch, at a 50-degree angle, holds a lot of support.

They wouldn't have to use as much building material for their buildings. It also allowed light to enter the room and the arch would be covered with stained glass.

**Erl Poulin** has a friend who has an Antique tea cup Collection, so he made a holder for the Tea cups in the shape of a tea cup. He also made it from a Pine 2 by 4 and his project has bent lamination in it. It has a honey oak color and a spray varnish over it.

### The winners:

**Third Place:** James Childress with his Cedar bird feeder. His Bird feeder has Approx. 77 pieces to it.

**Second Place:** David Roth's Intarsia Gothic Window made from Cherry Wood.

**First Place:** goes to Aaron Menning for his Maple workbench.

### Honorable mention:

**Jim Mc Cord** wanted a recount. Jim brought in whimsy boxes. These boxes hold 40 small wishes or 2 big ones and were free for a pinto bean.

Thanks Jim for helping out the guild.

**Congratulations and thanks to ALL who participated. We appreciate your support of the Guild.**

### Special Member Benefit from:

**Plans NOW**

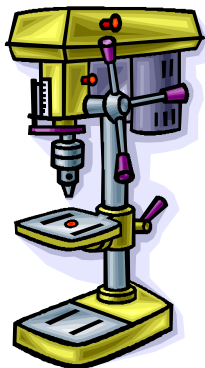
Join the PlansNOW Treasure Hunt and win TOOLS! Visit PlansNOW.com and click on the PlansNOW Pirate for details.

And while you're there, use your 15% discount on all the plans and techniques in the store.

**Your e-coupon word is: KCGuild**

Read more about our newest Sponsor on our web site or visit them at: [www.PlansNOW.com](http://www.PlansNOW.com)

## Shop Safety



### The Drill Press

#### Accident Description

I was trying to counter bore some holes in some small oak blocks. Three big problems were stacked against me.

?? I didn't own a real drill press, just a drill press stand that you clamp a drill into

?? The DP stand didn't have a table to it so it was impossible, or so I

thought, to clamp the part down, this meant holding the part with my Left hand

?? The drill I used in the stand had a locking trigger, but would only lock at top speed, 2300 RPM. I had also screwed up and drilled the thru hole first and was using a regular drill bit to make the counter bore

The first one worked well enough, but on the second one, as I slowly lowered the bit, it suddenly grabbed the part from my left hand and spun it around at the same 2300 RPM.

The block smacked my left thumb twice before I could pull my hand away, and then I still had to turn the thing off by pulling and releasing the trigger. My thumb had a small cut above the knuckle and a big knot, and my thumbnail was slightly bruised. I was lucky. It could have been much worse.

#### Advice to other Woodworkers

- ?? If you are Counter Boring or any procedure that remotely requires a Drill Press, use a REAL Drill Press. I chucked that Sears POS "that" day.
- ?? If you don't have one, beg borrow steal or change your design.
- ?? Use the right bit for the job. I went out that day and bought a set of Forstner bits.
- ?? ALWAYS CLAMP YOUR PARTS!
- ?? A fence can also help when doing this type of operation.
- ?? Keep your hands away from the sharp parts

#### Accident Description

Drilling 1" hole on edge of oak board using "spade" or "speed" type bit, holding piece down with left hand. Bit caught on edge of board and pulled board (with my hand still holding it) towards bit. Rotating bit took 1/8" off end of thumb.

#### Advice to other Woodworkers

CLAMP IT DOWN! Don't use a spade bit near edge of stock. Oh, and CLAMP IT DOWN!

#### Accident Description

Although this did not happen to me, I was working next to the person. She was using a hole saw mounted in a drill press to drill inlet holes in brass radiator tanks. She noticed that the brass plugs were staying up in the hole saw after the cut. Wanting to remove the brass plugs, and as the machine was running, she started swatting at it with her hand trying to knock the piece out. When she did so, her right work glove (cotton) got caught on the hole saw which wrapped her the back of her hand around the spindle. She broke her wrist and was on medical leave for several months.

#### Advice to other Woodworkers

Do not wear gloves while operating a drill press. Also restrain long hair and loose clothing. They can all easily become entangled in the bit. If you want to clear any debris out of the bit, power the machine down and wait for the spindle to come to a complete stop.

#### Accident Description

I was dismantling a 17" floor type drill press to move it from my father's house to my sister's in another state. I needed to remove the head assembly. I told my nephew to loosen the bolts on one side while I removed the auxiliary table and raised the drill table; he did what I asked ... the drill head assembly fell 2' and punctured my hand with the closed 3/4" chuck jaws and trapped the hand between the rim and hole on the auxiliary table. OUCH!!!

The point of impact was between the bones of the thumb and first finger and the auxiliary table provided some give so the head (130lbs) did not puncture the hand all the way through AND did not crush the tissue. The resulting wound was 1" deep and the thumb knuckle was bruised on the bone. Too deep for stitches, antibiotic ointment was applied, a dressing, and tape.

#### Advice to other Woodworkers

This happened three days after my father's death. Think though EVERY step especially when you are under stress. You may "feel" alright but you NEED to slow down. Two other subsequent minor injuries within two weeks have convinced me that I am STILL distracted enough to need to slow down and be MORE aware of what I am doing.

## Shop Tip

### Easy-Access Extension Cord

Tangles of extension cords in a workshop are not only annoying, but potentially dangerous.

Here's a solution that keeps a cord stowed safely overhead.

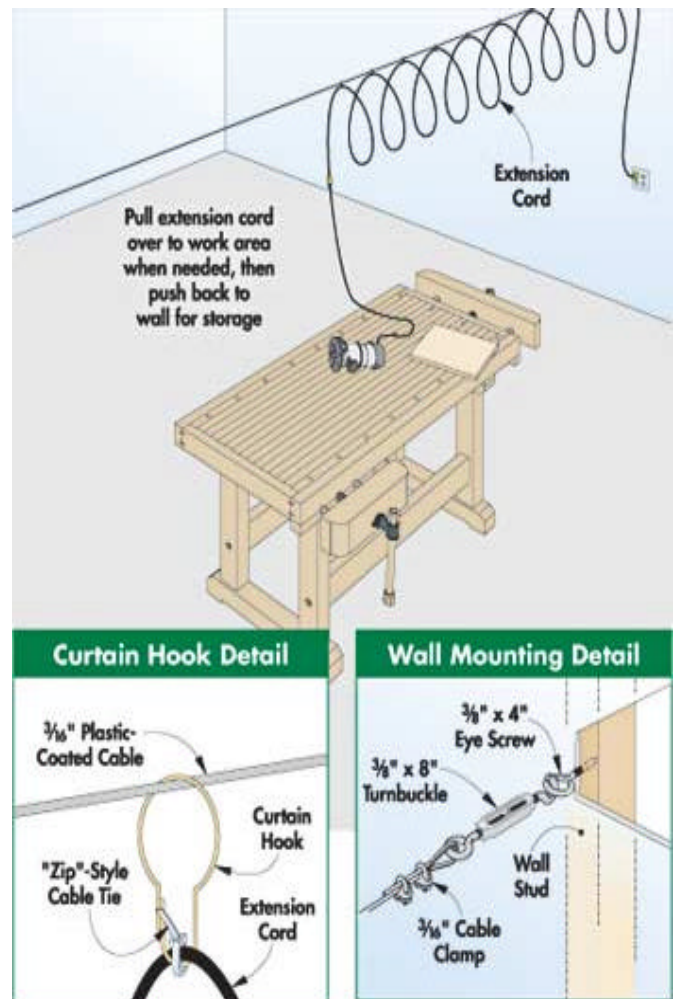
The extension cord holder works like this: a plastic-coated cable is secured to two opposite walls, and the cord is tied to curtain hooks that can be pulled along the cable above a work area.

First, secure eye screws to opposite walls. Then, attach a turnbuckle to one of the eye screws (*Wall Mounting Detail*). Using cable clamps, secure the coated cable to the turnbuckle. Pull the cable tight while a helper installs the cable clamps, and then use the turnbuckle to tighten the cable.

Using "zip"-style cable ties, attach curtain hooks to the extension cord every 2 to 4 feet, and leave enough slack on both ends of the cord as needed.

Wipe the cable with silicone to help the hooks slide more easily, and attach the hooks to the cable.

Printed by permission of: © August Home Publishing Co.  
All rights reserved. For more tips like this, visit:  
[www.WoodworkingTips.com](http://www.WoodworkingTips.com)



**Newsletter Deadline: 1st of the month:**

Please send all submissions for articles, tips, want ads announcements and anything else to Wayne Wainwright: 816 453-1073 email: [wwrig@kc.rr.com](mailto:wwrig@kc.rr.com)  
4214 N Brighton Ave KC. MO. 64117

Want to help cut guild monthly costs? Consider receiving the newsletter via email. It is faster and comes in color. If you are interested, please send an email to Wayne Wainwright at: [wwrig@kc.rr.com](mailto:wwrig@kc.rr.com), or add your email to the Attendance list at the monthly meetings.

## Member of the Month

Brian Kemp could not have developed in years of normal guild functions.

### Bill Evans



#### WHAT IS YOUR SPECIALTY IN WOODWORKING?

My specialty is scroll sawing. But I am expanding to more phases of wood-working now that I have a shop that has space and equipment to handle larger and more complicated projects.

#### HOW MANY YEARS HAVE YOU BEEN WOODWORKING?

I have been woodworking about 15

years.

#### WHAT IS YOUR FAVORITE HAND TOOL AND WHY?

My favorite hand tool is a good sharp hand plane. I like to watch the nice thin shavings come off and smooth finish it puts on the wood.

#### WHAT IS YOUR FAVORITE POWER TOOL AND WHY?

I would have to say my scroll saw is my favorite power tool because of the intricate pieces that you can make with it.

#### WHAT IS YOUR FAVORITE WOOD TO USE AND WHY?

My favorite wood to work with is cheery because I love the color of it.

#### WHAT IS YOUR MOST FAVORITE PROJECT YOU HAVE BUILT AND WHY?

The 4 Adirondack chairs and leg rest that I built last summer because they were the first major project that I built in my new shop.

#### WHAT IS THE BEST DEAL YOU HAVE GOTTEN ON A WOODWORKING TOOL?

I have to say my Leigh dovetail jig with the mortise and tenon head for \$200. Now all I have to do is learn how to use it.

#### WHAT GUILD ACTIVITIES HAVE YOU BEEN INVOLVED IN, HOW MANY TIMES/OR HOW LONG?

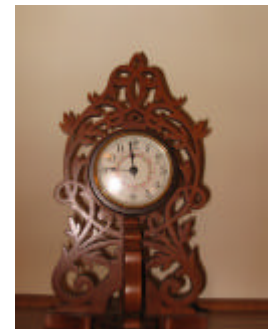
I have presented a program on scroll sawing. The tool show several times. The demo at Wyandotte Co. Lake. The toy project several times. The chair project.

#### WHAT HAS BEEN YOUR FAVORITE GUILD ACTIVITY?

The chair project has been my favorite activity with the guild. It has allowed me to make relationships with many that I

#### WHAT SHOP TIP CAN YOU GIVE US?

Take your time and think about what you are doing before you proceed with each step of a project it will save you time and material if you do.



### Show & Tell - Show Pictures



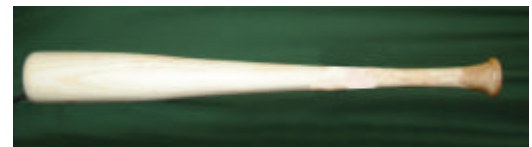
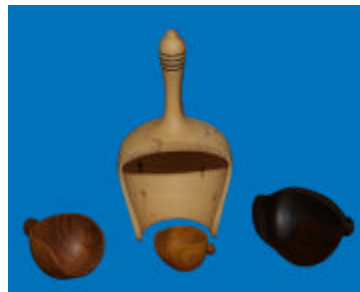
**Harold Sickles'** Walnut and Curly Maple Jewelry box with a sprayed Lacquer Finish.



**Jim McCord's** Whimsy boxes



**Anthony Harris'** clamshell boxes and scoops



**Anthony Harris'** «Louisville Slugger»



**Erl Poulin's** corner cabinet



**Aaron Menning's** Mini-Workbench



**Tim Helfrich's** step stool with a polyurethane finish.



P.O. Box 413922  
Kansas City, MO. 64141

### Meeting Minutes

New Members / Visitors: Bill & Theresa Bysel, Chris Lewer

#### News:

#### **The Chair project:**

We had about 70+ people from our guild help on the chair project.

Wayne explained about the chair project to the visitors at the meeting.

Wayne asked all of the guild members who participated in the chair project in any way to please stand up. About 50 people stood up. Thanks to all!

The member of the year for 2005 was Mac Dressler. It goes without saying that his sort of expertise is what we all aspire to achieve at KCWG. Congratulations Mac for being chose Member of the Year by your peers.

#### **Annual Awards:**

Member of the Year Award Goes to Mac Dressler. He received a KCWG Coffee Cup and received a Check and his name will be put on a plaque. Jim Bany was the member of the Year in 2004. The Plaque was passed around for all to see.

The Life Time Achievement award goes to Bill Webb. Bill was floored.

The Contributor of the year to Chris Kunzle. Chris was not able to make it tonight. He was in Switzerland spending the holiday with his family but he gave his best wishes and blessings to the Guild members.

We had the Christmas party this month so there was no Tool Talk or Raffle this month

**Happy Holidays  
to all!**



### Calendar

Executive Meetings, 7:00pm Kansas City Public Library 1410 W 10th St. KC MO 64105

Guild meetings, 7:00 p.m., Jacob's Well Church, 1617 W. 42nd St., To reach us "during the meetings, call: KCMO. (816) 561-8177

#### Executive Meetings

#### Guild Meetings

2006

January 4th  
February 1st  
March 1st  
April 5th  
May 3rd  
June 7th  
July 5th  
August 2nd  
September 6th  
October 4th  
November 1st  
December 6th

January 18th  
February 15th  
March 15th  
April 19th  
May 17th  
June 21st  
July 19th  
August 16th  
September 20th  
October 18th  
November 15th  
December 20th

All members are welcome at any board meeting. A call to one of the Officers is all that is necessary.

### Show and Tell:

**Tim Helfrich** made a step stool for their grandson and has a polyurethane finish.

**Anthony Harris** made a clamshell box. And he also brought in some scoop he made. He also brought in items that sometimes that don't work. He brought in a bowl that had a crack in it. Another bowl with a lid top that is stuck to it. (The bowl was made from wet wood and the cherry top was dry wood.)

**Erl Poulin** showed a corner cabinet that he made

**Harold Sickles** made a Jewelry box made from curly walnut and the accents were curly maple and has a sprayed Lacquer Finish.