



Volume 21 Issue 4

May 03

Guild Meetings: Roanoke
Presbyterian Church,
1617 W. 42nd St.,
KC Mo. 64111

Wood Words

Kansas City Woodworkers Guild www.kcwoodworkersguild.org

May Raffle: As usual, Chris will have many great items to choose from in April!

Please thank associate members; Paxton's, Strasser, Turn-About-Wood, PlansNOW and Woodcraft, for supporting our toy project.

Next Meeting Wed. May 21st, 7 PM

Program: Come prepared for something special

INSIDE THIS ISSUE:

Presidents Corner	1
Shop Safety	3
Program	4
Classifieds	5
Web Words	6
Pictures	7
Minutes	8
Show & Tell	8
Calendar	8

DIRECTORS-OFFICERS:

President	Erl Poulin 816 753-4121
Vice President	Jim Bany 913 341-3559
Secretary	Bill Webb 816 792-8205
Treasurer	George Dixon 816 781-8023
Director	David Roth 913 338-2433
Director	Wayne Suter 816 635-5792
Director	Neal Shoger 816 781-4000
Director	George Rexroad 913 831-9359
Director	Terry Stair 816 765-7296
Books	George Rexroad 913 831-9359
Video	Don Kruse 913 441-3484
Editor	Wayne Wainwright 816 453-1073

Sawdust: The Presidents Corner

Erl Poulin

Last month we held our annual election of officers, and by acclamation, the slate of officers and directors presented to the membership was voted in place. Thus begins my second term as president, which gives me cause to reflect upon the many accomplishments of the Guild this past year.

In June, I was suddenly struck by a severe staph infection, which left me hospitalized for several weeks, much of the time in intensive care. The outpouring of support and concern shown by the members of the Guild proved we are indeed a caring group of people. I sincerely believe my recovery was greatly influenced by this show of support, and I thank everyone for your thoughts and prayers on my behalf.

In September, our vice president, and resident construction guru, Jim Bany, organized the construction of four houses, in seven

working days, for the Kaw Valley Habitat for Humanity project. Several of our members participated in this worthwhile effort, and Jim deserves a great round of applause for his efforts. He has plans to repeat this effort again this September, and always welcomes the volunteers the Guild provides. Mark your calendars to participate again this year.

In October, we held a shop tour in Johnson County, where six members opened their shops for a Saturday morning, so we could view their current projects, see their methods of construction, analyze their workshop layout, and take home a tip or two to use in our own workshop. And we got to eat donuts and coffee (plus fresh baked brownies, thanks to Frank Layne) at each stop!

In November, we completed this past year's Toy Project with the shipping of 8,402 small wooden toys to the United Way, for delivery to disadvantaged children at Christmastime. This brings the total number of toys made in the fourteen years the Toy Project has been in existence

to more than 125,000. A great effort for a great cause.

In December, we held our annual Christmas party, and our first annual 2 by 4 contest. The food and refreshments provided by the members and their spouses were delicious, the fellowship and friendship among the members was warm, and the creativity shown in the entries in the 2 by 4 contest was superb. This is

PLEASE PATRONIZE OUR SPONSORING MEMBERS

	Paxton Woodcrafters 816 483-0659
	Woodcraft Supply 913 599-2800
	Strasser Hardware 913 236-5858
	Turn-About-Wood Store 816 587-3195
	PlansNOW August Home Publishing www.plansNOW.com

always one of my favorite meetings, as I can visit with members and their spouses and guests whom I don't get a chance to see during the year.

In February, we manned our booth at the annual Tool Show in Overland Park, and had on display more than two-dozen woodworking items that were made by members of our Guild. Ray Graham even demonstrated how to cane a chair during the event. Our booth was less than fifty feet from the refreshment stand (a *very* good thing, by my estimate), so virtually everyone in attendance at the show saw us and got to know a little more about woodworking. We even gained several members due to the exposure we received.

In March, we began our association with the University of Missouri, Kansas City, ACED program in the assembly of birdhouses and kites to adult students with developmental disabilities. This has been a very rewarding experience for us, simply by the appreciation shown by the students as they completed their projects. We are soliciting help from the Guild members to continue for the fall semester. I can guarantee you will not be sorry you participated—the students simply won't let that happen. See either Dave Kraatz or myself at the meeting to volunteer. We will certainly appreciate your help, and so will the students.

In looking back over the past year, I realize these are only the highlights of our many and varied accomplishments. Too numerous to list here, including the great programs at our meetings, and other charitable efforts by our membership, they all deserve a hearty thanks for a job well done. May our next year be as full and rewarding for us, and for those who benefit from our outreach in the community around us.

Our Shop Tour of the Northland, scheduled for Satur-

Our sponsors are:

Clarence Teed Memorial

Paxton Wood Source

Woodcraft Supply

Strasser Hardware

Turn About Wood

PlansNOW: August Home Publishing

Please mention your guild membership when you patronize these businesses. Some offer special discounts for guild members.

day, the 17th of May, 2003, should be well underway by the time you receive this newsletter. I am hoping for a good running commentary from our membership, since I will be unable to attend. Perhaps someone will take along a digital camera, and email me pictures of the various shops before the meeting next week? My email address is erlpoulin@computemail.com. I will print any pictures I receive, and bring them with me to our meeting this Wednesday evening, to share with the Guild membership.

The Toy Project planning committee met on Saturday, the 26th of April, 2003 at Lawler Gear in Lee's Summit, Missouri. As the Lee's Summit Woodworkers Guild has decided to discontinue participation in the toy project, and focus their charitable efforts elsewhere, we collected the various materials and projects they had begun. I will have an inventory of these items at the meeting, and we will schedule a time for the Toy Captains to meet.

The executive meeting this month will be held once again at Fred Chael's home, on Tuesday, the 20th of May, 2003 at 7:30 pm. Any and all members are always welcome to attend. As I mention every month, we encourage the input of the entire membership, and are constantly looking for ways to improve our Guild.

One last Guild note: we are planning a bus trip to the Woodsmith shops in Des Moines, Iowa this fall. This promises to be an enjoyable activity, and one where we can share fellowship with other woodworkers. I'll have a sign-up sheet available at the meeting. We need to begin preparations now, so we will have a good idea how many will participate.

Finally, I have a short story I came across recently that I think you will appreciate. It is about the difference between *Faith & Trust*:

Think of a rope strung tightly over Niagara Falls. Near the edge of the falls is an acrobat with a wheelbarrow. He says to you, "I am going to push this wheelbarrow across Niagara Falls, while walking on this tightrope. Do you think I can do it?"

You reply, "Yes, I think you can. I've seen you do it before, so I believe you can." You have confidence that the acrobat can do what he says he can do. That is faith.

Trust, however, is something else. Trust is getting in the wheelbarrow.

Shop Safety

Jim Ramsey

I was making custom raised panel kitchen cabinets when I went to the local national home store to get some 3/4" maple veneer plywood. Instead of asking a clerk to help me get a sheet off a high shelf, I stupidly tried to get it myself. The 50 pound sheet fell off the shelf and landed directly on my foot, where I was wearing open-toed shoes. Result: A broken big toe, a cast for 6 months, a lost big toenail, and a permanent limp when I walk.

Advice to other Woodworkers

I use power tools and shop equipment all of the time (I recently made 200+ dado cuts on the table saw in one setting). I take my time with setup and keep my hands away from the blade. I think about what would happen if something slips and prepare accordingly. So what am I doing when I get hurt? I'm in a Home Depot! All because I couldn't take the time to find a clerk (I know it can sometimes be almost impossible). Some advice:

1. If something is too big, bulky, or heavy to move, ignore all of your instincts (if you are a guy) to do it yourself and GET SOME HELP.
2. Before doing something, stop and think about what could happen if something went wrong. I always do this with power tools and now do it at Home Depot too. I even started using safety goggles when mowing the lawn, and sure enough, the lawn mower threw something that would have hit me in my eye had I not been wearing them.

Trying to resaw thick stock to make some wide 3/8" strips of stock. I was using a blade guard, push stick, but no feather board. I used my left hand instead.

At the end of the cut, with the blade guard 2 1/2" above the table saw top, something (don't know what) shifted causing my left hand to go into the blade. The blade went through my index finger lengthwise from the top, through the first 2 joints then traveled across the backside to my thumb,

taking the first bone and ripping it out through the pad. End result: index finger--splinter of the first bone left, 2 shattered joints, broken 2nd bone, nerve cut, artery cut, all tendons cut, all flesh missing on inside of finger. Thumb, well I still had my nail above the first joint, that was it. They had to amputate both fingers. Way too much damage for any reconstruction.

Advice to other Woodworkers

THINK about the proper tools to use for the job. I should've used the bandsaw for resawing 2 1/2" stock.

This accident involved a plain old screwdriver. I was working as an emergency room nurse when a fellow came in (he drove himself to hospital) with a screwdriver poking out of his eye. He had been trying to pry open a can of paint and it slipped. He was afraid to remove the tool himself, so held onto it and drove himself in. He lost the eye, but luckily nothing more. Am not making this up - it happened in Burlington Memorial hosp., Burlington, WI in 1974 or 1975.

Advice to other Woodworkers

The obvious - a screwdriver is not a can opener, and if you must, at least aim it away from yourself!

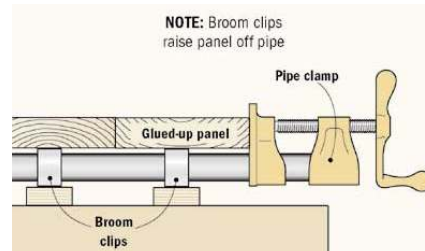
Printed by permission of: Woodworking.org.
All Rights Reserved. For more tips like this, visit www.Woodworking.org

Member to Member

Pipe Clamp Cradles

Whenever you use pipe clamps to glue up a solid-wood panel (which is quite often), you'll need some way to steady the clamps and keep them from tipping over.

What I do is make several "cradles" from inexpensive metal broom clips and plywood blocks (see Photo). The cradles have the added benefits of raising the panel off the



clamps, so there's no worrying about the pipes leaving behind ugly black stains on the wood (see Illustration).

Printed by permission of: © August Home Publishing Co.
All Rights Reserved. For more tips like this, visit www.WoodworkingTips.com

Program: “Franklin Intl” - Joe McClain

Bill Webb

Joe McLain with Franklin Titebond Products spoke at our last meeting.

From his handout: “Franklin International was born in 1936 by Langdon T. Williams with the production of the first batch of liquid hide glue. It was ready to use – no solids to dissolve. It applied at ambient temperatures instead of 140 degrees F for traditional hide glues.

It allowed for 20 minutes of assembly time instead of 2. Today, Franklin’s Hide Glue is used for interior woodworking, musical instruments and antique restoration. Franklin is the sole producer of liquid hide glue today in the U.S.

After hide glues came Titebond aliphatic resin adhesive and its water resistant cousin, Titebond II for woodworking.”

They also make a wide range of glues, for diverse uses such as roofing shingles and sealants, caulks, and film adhesives.

He described some of their products, and demonstrated their Titebond HiPurformer (sic) “Advanced Bonding System”. The technology behind the product was incredible.

The other products he described were “Titebond”, which is good for interior work; “Titebond II” which he described as water resistant and is their best selling glue.

Their “Titebond Liquid Polyurethane Adhesive” was made from 100% solids with no water in it; moisture in the air makes it foam. The Franklin line also included Liquid Hide and Dark Wood glues.

Thanks for an excellent program Joe

For Sale:

I have an old Porter model 103 commercial shaper from the 1930's which someone ought to put to use. C.O. Porter Machinery Co., Grand Rapids, MI -- still in business I think. The

shaper is flat-belt driven (belt included), with motor mount and 9" fly-wheel (but no motor).

29.5" x 18" table, 1-1/2" spindle. Some pock marking on the table. Needs a little renovation, but could make someone a nice, heavy shaper.

Make an offer -- I won't be offended!

Call Dennis Maack at 913-345-9660.

Special Member Benefit from:


Join the PlansNOW Treasure Hunt and win TOOLS! Visit PlansNOW.com and click on the PlansNOW Pirate for details.

And while you're there, use your 15% discount on all the plans and techniques in the store.

Your e-coupon word is: KCGuild

Read more about our newest Sponsor on our web site or visit them at: **www.PlansNOW.com**

Want to help cut guild monthly costs? Consider receiving the newsletter via email. It is faster and comes in color. If you are interested, please send an email to Wayne Wainwright at: wwrig@kc.rr.com, or add your email to the Attendance list at the monthly meetings.

Newsletter Deadline: 1st of the month:

Please send all submissions for articles, tips, want ads announcements and anything else to Wayne Wainwright: 816 453-1073 email: wwrig@kc.rr.com

4214 N Brighton Ave KC. MO. 64117

Special Opportunities

For Sale:

Rockwell bandsaw, 28-200
 Delta Milwaukee drill press, DP204
 Rockwell Delta lathe, 46111
 Delta Milwaukee 8" table saw
 7 Diston Porter lathe tools and 12 Brookstone smaller tools
 Grizzly 6" belt and 9" disk sander combo
 Grizzly Knife buffer/grinder model 61061

All of the tools are in good shape and condition

Wayne Wainwright for more info: 816 453-1073

Gentlemen, Having been a member of your organization a few years ago, I thought I might pass this on to a fellow woodworker.

Having recently acquired a Powermatic 66 @ auction, I am now reluctantly selling my beloved 50's Vintage Craftsman table saw.

Features: 2H.P./220V. motor, 30" Delta Unifence W/ table extension, mobile base, steel pulleys, link belt, 4" dust coll. port, 2 cast iron ext. wings to left of blade, Miter gauge, plywood cutoff sled, all in excellent condition and tuned to perfection. Am sacrificing for \$600.00. (Would cost twice that to duplicate today.)

Anyone interested can contact me at:
 termite71351@aol.com or by phone @ (816)4520094
 or (816)5895389. My name is Joe Hoppenthaler

Bailey Wood Plane, about 24 inches long. Contact:
 Robert Bethel - phone # is: 816-781-8122

Saturday, May 17th from 8am - 12pm
Northland Shop Tour

Please come on up and see the shops in the
 Northland - you will find coffee, Danish etc (at

least at some of the finer establishments).

Wayne Suter
 1300 Robin Circle
 Kearney, MO. 816 628-4602

George Dixon
 1312 Telford Dr
 Liberty, MO. 816 781-8023

Bill Webb
 618 Lancelot Dr.
 Liberty MO. 816 792-8205

Pete Belcher
 1505 N.E. 94th St
 Kansas City MO. 816 468-8556

Wayne Wainwright
 4214 N Brighton Ave
 Kansas City MO. 816 453-1073

Hope to see you there!

Announcing.....

New Service Starting June 1st.

Turn About Wood's

"Introduction to Woodturning" Class
(2 - 3 hour sessions)

is being offered absolutely FREE
to customers who purchase their first new lathes
at Turn About Wood.

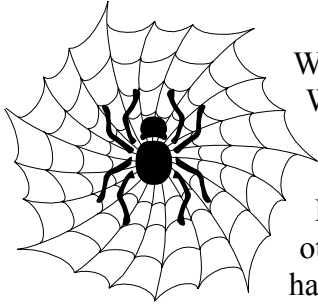
(This is a \$ 75.00 value absolutely FREE)

Start your woodturning experience with a good foundation !!

TURN ABOUT WOOD
 purveyor of fine wood
 5226 NE CHOUTEAU TRFWY
 KANSAS CITY, MO.
 816-587-3195

Web Words

Wayne Wainwright

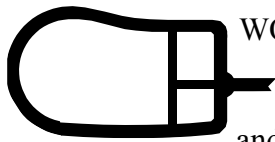


What's new on the web? Well, unfortunately, not much this month from us.

I have been busy with other responsibilities and have not made many

changes. However, I could not let you go a whole month without some new information. If you are searching for information on the web about tools or some sort of woodworking information, try - <http://www.woodweb.com>

Here is a place you almost "can't" go wrong. I have found it a most helpful site. Here is a small sample of the things you will find there:



WOODWEB offers more ways to find the information you need to do your job better and more profitably...

Free Software

Download product demos, freeware and shareware. Many free offerings are fully functional copies of woodworking, productivity, CAD, and Internet applications. There's even great information about computer viruses and how best to protect your system from infection.

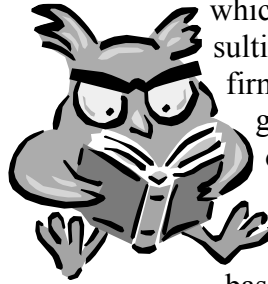
Woodworker's Directory

In using WOODWEB's free business-building services, make this your first stop. You can create a customized Web page for your company, which is then indexed based on the type of work you do, where you're located, and other search criteria. You'll also be signed up for our "Request for Quote," where people seeking woodworkers for specific projects post details and bidding instructions. This service is also free.

The Wood Doctor

Dr. Gene Wengert (the Wood Doctor) is Profes-

sor Emeritus in Wood Processing, Department of Forestry, at the University of Wisconsin (Madison) and president of The Wood Doctor's Rx, LLC, through which he provides educational and consulting services to lumber processing firms. WOODWEB has a large and growing collection of articles and other contributions by Dr. Wengert.



Machinery Finder

A fully searchable "super database" of used machinery for sale in nearly 140 categories, WOODWEB's Machinery Finder is actually a compilation of "machines-for-sale" databases from dealers all over the world. WOODWEB exacts no fees or commissions on buyers. Users can find specs on each machine, and can link directly to the dealer via the Web, or through other contact information, also provided.

Bookstore

Powered by amazon.com, this is possibly the most extensive listing of woodworking titles on the Web. Browse categories including boatbuilding, cabinetmaking, forestry, furniture design, furnituremaking, general woodworking, lumber, primary processing, and wood engineering. Enjoy the kind of detailed title descriptions for which amazon.com is famous, and the convenience of instant, online ordering.

Lumber Buying Guide

A listing of current distribution yard prices for kiln-dried rough lumber in various grades and quantities. And because a great price can become a bad one if you have the lumber shipped 2,000 miles, the Lumber Buying Guide is categorized by geographic region.

Tradeshaw Directory

Early planning will make your tradeshow attendance far more productive. Get dates, locations and travel information to help arrange your next wood industry trade show visit. Our directory features many important shows in the U.S. and abroad.

Industry Sales and Special Offers

WOODWEB advertisers offer our readers special discounted pricing on selected woodworking related products and services. Special offers are added regularly.

Show & Tell Pictures



Tim Helfrich: 3 Semi's made from Walnut, oak, purple hart, yellow hart, Bubinga, Cocobolo; finish of "rub on" poly. Points of Interest: Horns from Golf Tees
Challenges: Making parts to size



Earl Poulin: Grace Church sign made from Ipe. Points of interest are: same version of sign built last year. Challenges: Ipe is a very hard wood. Difficult to drill and form.



Paul Twenter: Night Stand made from Red Oak and Bubinga; light stain
Points of Interest: Bubinga wood.
Challenges: None noted



Bill Webb: Rockers made from Ash. Points of interest are: The laminating Process. See setup pictures. Challenges: Will probably steam bend them next time.



Roy Lutes: Stool made from pine.
Points of interest: Maybe a toy project.
Challenges: None noted



Jim Doyle: Tea Light Candle Holders made from Red Oak. Points of Interest: Home made stain from his grandfather's formula. Challenges: None noted

Jerry Holloway: Golf ball display racks and a shadow box for his wife.





P.O. Box 413922
Kansas City, MO. 64141

Minutes

Visitors and new members:

Visitors: Susan Johnson, Joseph, McLain, Jerry Holloway, Terri Oglesby, New members: Bill Sander, Bill Fitzgibbons, Mark Biggs
Note: If names are misspelled, please send a message to the editor for correction - Thanks.

News:

- Bill Webb needs 19" long 2x4's for car carriers.
- Home for Habitat is starting in September again with Jim Bany – he is going for 4 houses again.
- A class for Intarsia featuring building a "Fleur de Lis" still has room for 5 more people on Friday, June 13th, 6:30 to 9:00 pm and Saturday, June 14th, 9:00 am to 3:00 pm. Each participant will take home a Fleur de Lis. Class is free; will be held at Woodcraft on 87th in Lenexa. (A great gift for that special person who likes country French décor.)



We would like to thank Woodcraft, who is generously donating the wood to be used for the class. Contact David Roth if you'd like to attend: 913-338-2433

Raffle prizes:

Drill Bits: Jim McCord, Microwave: Seth Simonton, Radio: Fred Chael, Tarps: Bradley Barth, Tight Bond: Timothy Helfrich, Shop Vac: Russell Clausung, Scissors: Bill Sander
Gloves: Gary Cald, Micro Rasp: Bill Jilesen, Strap Wrench: Sean Ames, Tape Measure: Manuel Lopez, Small scroll driver kit: Bill Webb, Grip Screw Driver Set: Paul Tredo, 125 Volt Outlet Tester: Bill Kuhlman

Tool Talk:

- Earl Poulin talked about a 3 in 1 tool he pick up at a great price.
- Bill Webb is giving away 7.2 Batteries to a Ryobi Drill if anyone is interested.
- Jerry had some clamps from Harbor Freight that didn't hold well.

Show and Tell:

Earl Poulin: Grace Church sign made from Ipe. Points of interest are: same version of sign built last year. Challenges: Ipe is a very hard wood. Difficult to drill and form.

Bill Webb: Rockers made from Ash. Points of interest are: The laminating Process. See setup pictures. Challenges: Will probably steam bend them next time.

Calendar

Executive Meetings, 7:30 pm At Fred Chael's home, 4821 State Line Road, KCMO.

Guild meetings, 7:00 p.m., Roanoke Presbyterian Church, 1617 W. 42nd St., To reach us "during the meetings, call: KCMO. (816) 561-8177

Executive Meetings **2003** Guild Meetings

January 15th	January 17th
February 19th	February 20th
March 19th	March 20th
April 16th	April 17th
May 21st	May 22nd
June 18th	June 19th
July 16th	July 17th
August 20th	August 21st
September 17th	September 18th
October 15th	October 16th
November 19th	November 20th
December 17th	December 18th

Fred has agreed to lend his home for the monthly board meetings. All members are welcome at any board meeting. A call to Erl Poulin or Jim Bany is all that is necessary.

Sean Amos: Game Chair made from scrap material. Points of interest are: Designed and built by a 9 year old. Challenges: Getting his dad to help.

Tim Helfrich: 3 Simi's made from Walnut, oak, purple hart, yellow hart, Bubinga, Cocobolo; finish of "rub on" poly. Points of Interest: Horns from Golf Tees
Challenges: Making parts to size

Paul Twenter: Night Stand made from Red Oak and Bubinga; light stain
Points of Interest: Bubinga wood. Challenges: None noted

Roy Lutes: Stool made from pine. Points of interest: Maybe a toy project. Challenges: None

noted



Jim Doyle: Tea Light Candle Holders made from Red Oak. Points of Interest: Home made stain from his grandfather's formula. Challenges: None noted

Jerry Holloway: Golf ball display racks and a shadow box for his wife.