



Wood Words

Kansas City Woodworkers Guild www.kcwoodworkersguild.org

Volume 21 Issue 3

March 03

Guild Meetings: Roanoke
Presbyterian Church,
1617 W. 42nd St.,
KC Mo. 64111

March Raffle: As usual, Chris will have many great items to choose from in February!

Please thank associate members; Paxton's, Strasser, Turn-About-Wood, PlansNOW and Woodcraft, for supporting our toy project.

INSIDE THIS ISSUE:

Presidents Corner	1
Shop Safety	3
Program	4
Classifieds	5
Web Words	6
Pictures	7
Minutes	8
Show & Tell	8
Calendar	8

DIRECTORS-OFFICERS:

President	Erl Poulin 816 753-4121
Vice President	Jim Bany 913 341-3559
Secretary	Bill Webb 816 792-8205
Treasurer	George Dixon 816 781-8023
Director	David Roth 913 338-2433
Director	Wayne Suter 816 635-5792
Director	Neal Shoger 816 781-4000
Director	George Rexroad 913 831-9359
Director	Terry Stair 816 765-7296
Books	George Rexroad 913 831-9359
Video	Don Kruse 913 441-3484
Editor	Wayne Wainwright 816 453-1073

Next Meeting Wed. March 19th, 7 PM
Program: Middle School Woodworking - With James Bundridge

Sawdust: The Presidents Corner

Erl Poulin

The Annual Woodworking Tool Show was, by all accounts, a resounding success for the Kansas City Woodworkers Guild this year. The new location of the show, at the Overland Park Convention Center, provided a fresh venue for the vendors to display their wares.

Thanks to the efforts of our Tool Show coordinator, Jim Ramsey, we had enough space available to exhibit more than two dozen projects our members produced. The location of our booth, in the middle of the convention center, and less than fifty feet from the concession stand (a *very* good thing, by my accounts) ensured that virtually everyone in attendance at the show saw us, and got to know a little more about our Guild.

Several people who visited with us at the show came to the Guild meeting the next week, and some even became members. This is why we participate each year - to gain exposure, and, hopefully, new members. There were several members of the Guild manning the booth at all times during the three-day weekend,

and demonstrations of different aspects of woodworking helped capture the crowd's attention. I enjoy this aspect of membership in the Guild very much, as I always have a good time meeting new people. Being in the booth (unfortunately, due to work requirements, I could attend only Sunday afternoon) and representing the Kansas City Woodworkers Guild in an official capacity, gives me a strong sense of accomplishment.

The past three weekends have found Dave Kraatz and myself teaching a class at UMKC in the assembly of birdhouses and kites to adult students with developmental disabilities. This has been a very enjoyable project, as the students are extremely motivated, and excited about creating something with their own hands.

Sure, these are simple kits with the parts already cut out, and the only 'woodworking' is really just nailing the parts together, but the smiles on the students faces, as the birdhouses come together, assures us that we are accomplishing something truly worthwhile.

Last week, Dave had a short presentation about the houses, (designed for Wrens), the different types of Wrens found in our region, and the way to identify each one. Next week, we start building kites. The final week-

end, given that the weather is pleasant, we will all 'go fly a kite.' I've been told to do that on occasion, but now I will finally have the opportunity to do just that!!

I can't say thanks to Dave enough for agreeing to take on this project. And Dave, I think one of the girls in the class is kind of sweet on you!

It is time to start thinking about a shop tour for the spring. Last October, we visited the workshops of four of

PLEASE PATRONIZE OUR SPONSORING MEMBERS

	Clarence Teed Memorial
	Paxton Woodcrafters 816 483-0659
	Woodcraft Supply 913 599-2800
	Strasser Hardware 913 236-5858
	Turn-About-Wood Store 816 587-3195
	PlansNOW August Home Publishing www.plansNOW.com

our members in the Overland Park/Johnson County, KS area. We would like to concentrate on the Northland for our next tour, to be held sometime in April or May. If you would be willing to open your shop for a few hours on a Saturday morning, and host a few of your fellow woodworkers, please let us know at the meeting. I'll start a sign-up sheet, and we can begin the planning stage for this fun activity. I always walk away from a friend's workshop with something in the way of a new idea on how to accomplish a task, or a particular jig or fixture, etc. Sometimes, we even get coffee and a donut!

I don't have any news concerning the Toy Project this month, but hope to have some preliminary plans to share with you at the next meeting. Be thinking about what toys you would like to build this year, and what you can do to make this year even better for the many kids we help.

We have been contacted by a person in Grandview, who has a collection of exotic woods he uses in making canes and walking sticks. His collection includes some Honduran rosewood, Zericote, Che Chem (poisonwood), Granadillo, etc. He has been diagnosed with terminal cancer, and would like to send these on to a good home. See me, or Wayne Wainwright, at the meeting if you are interested in 'adopting' some or all of his stock.

The executive meeting this month will be held once again at Fred Chael's home, on Tuesday, the 18th of March, at 7:30 pm. Any and all members are always welcome to attend. As I mention every month, we encourage the input of the entire membership, and are constantly looking for ways to improve our Guild.

One other item to mention: There has been talk of planning a bus trip to the Woodsmith shops in Des Moines, Iowa this fall. It has been, by my account, almost five years since our last trip, to Kansas State University, in Manhattan, so we are most certainly due. Give us your input at the meeting. This is another fun adventure we can all enjoy.

A final note - our annual election of officers and directors to

Our sponsors are:

Clarence Teed Memorial
Paxton Wood Source
Woodcraft Supply
Strasser Hardware
Turn About Wood
PlansNOW: August Home Publishing

Please mention your guild membership when you patronize these businesses. Some offer special discounts for guild members.

the Guild is next month. Please consider if you would be interested in stepping into the shoes of one of our illustrious leaders whose term is about to expire. Fresh blood and new ideas are always needed in an organization such as ours, and we welcome the opportunity to share the responsibility of running the Guild with all of you.

Thank You for an Excellent Tool Show.

Dave Kraatz

I extend my thanks to all of our members who participated in our Tool Show booth and display on February 14-16. A special mention is due for Jim Ramsey for his coordination of the show and his demonstration, to David Roth, Bob LaDue, and Ray Graham for their demonstrations during the show, and to everyone that brought a piece of your woodworking to display.

In my not so humble opinion, I think that we had the best booth and most attractive display in the show. I enjoyed working with each of you to show off our organization and our work.

Thank You: WOODLINE ARIZONA, Inc.

At the Tool Show, Mr. Wayne Sutter of WOODLINE ARIZONA made a very generous donation of a WL-2010 Professional Router Bit Set to support our Guild toy project. This set of bits will be included in our tool raffle in a future meeting and the proceeds will be earmarked for toy project expenses.

WOODLINE ARIZONA has an extensive line of router bits for all of your woodworking needs. Fifty copies of their catalog were passed out at the February meeting. You may order from their catalog or directly on the Internet at www.woodbits.com. Please check out their products the next time you need a router bit. Wayne, thanks for being our partner in our toy project.

Special Thanks:

And though he is too modest to take credit for himself, a very special thanks goes to Dave Kraatz as well, for working with Jim Ramsey to coordinate the show and the space and not to mention his workshop tools demonstration that also proved to be a great hit at this year's Tool Show.

Thanks Dave

Shop Safety

Jim Ramsey

Trying to get a little creative on my portable table saw and tried to slice a 3/4" piece of poplar in half (didn't have a band saw at the time, or planer). Blade bit it, along with three of my fingers.

Happened so fast I didn't feel it at first - but saw the blood. Really didn't want to look at my hand to see the damage. I'm a tough cookie but the sight of my own blood is my weakness! Had to call EMS and take a ride to the local ER. It was very humorous for the staff to see a female with a table saw injury. Don't be creative. Follow the rules!

I was mid-way through ripping zebra wood when I thought I should get a push stick. It was out of reach, so I thought I'll be really careful and get it after finishing the cut. I kept my eyes on the blade and my fingers, until I was abruptly reminded that I also have a thumb.

My thumb was chewed up a bit and with tissue missing, it could not be stitched. Luckily, it healed quite well. A potential kickback from turning off a saw in the middle of cutting a small piece of wood might be dangerous, but that's probably what I should have done at the time.

I was making some small wooden wheels for a toy truck. I didn't have a way to secure the small piece so I turned the router upside down to use it as a router table and the piece got away from me pulling my left index finger into the cutter bit.

3/8th to 1/2" gash in tip of finger, lots of blood flow. I went to the ice box and stuck the wound in a tray of ice that stemmed the flow of blood as long I was touching the ice. I kept the finger in the ice tray and drove my-

self to the local ER, got a couple of stitches which were removed in about a week. Make sure small pieces are secure, make a jig or a hold down of some kind, it doesn't have to be fancy like you see in the magazines.

A piece of double side tape on a scrap of plywood is good enough for making just a couple pieces, or better yet, use short coarse, drywall screws.

Or rout 3/4 oak on a piece of 1/2 ply scrap held in place with a 3/4 pin nailer through the bottom of the ply scrap. Only 1/4" of the brad went in the oak from the back side that wouldn't be seen. I have done the same with drywall screws - works great for softwoods.

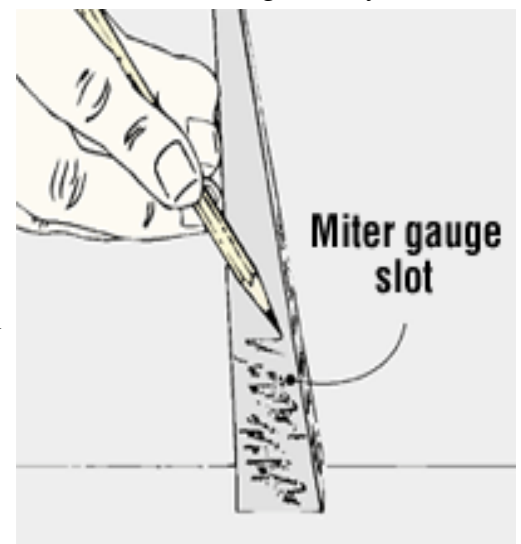
**Printed by permission of: Woodworking.org.
All Rights Reserved. For more tips like
this, visit www.Woodworking.org**

Member to Member

Pencil Keeps Miter Gauge Sliding

The other day the miter gauge in my table saw was sticking in the slot, and for the life of me I couldn't find a can of dry lubricant. So I improvised with something I always have close at hand, the pencil in my apron pocket.

After blowing out the sawdust, I simply "scribbled" on the sides and bottom of the miter gauge slot with the pencil. The graphite made things slide freely again.



**Printed by permission of: © August Home Publishing Co.
All Rights Reserved. For more tips like this, visit
www.WoodworkingTips.com**

Program: Boring - Jim Bany

Bill Webb

The subject was drilling or should we say boring. Really it was very interesting.

There are four rules for purchasing drills and drill bits:

1. Purchase quality, it pays in the long run.
2. Control the speed and don't burn up your bits.
3. Avoid tear out, use a backup board.
4. Keep your drills sharp.

He showed us some hand powered drills: two types of "gear" driven from a hand wheel and a good old brace with square head drive shank bits. He also had a push type that translates linear motion into rotary motion which were also used as screwdrivers. Comments from the audience were "I still use those." Jim's comment, "I still like my battery powered drill".

Jim then showed 12 different types of drill bits:

- Twist Drill Bit. They come with three different types of points: 90 degrees for wood, 118 degrees for wood or metal and 135 degrees for metal
- Brad Point. A special bit for wood cutting. Typically a cleaner cut than a twist drill.
- Forstner Bit. Special bit for very clean hole drilling.
- Spade Drills. Typically for rough work.
- Auger Bits. Typically for rough work. Very long bits are available.
- Hole Saws. Typically for larger holes. He had one about 6" in diameter for cutting a hole in drywall for recessed lighting.
- Stanley Power Bits. Special use bit - still available.
- Vix Bits for hinges. Centers the pilot screw hole for fastening hinges.
- Graduated Bits. For electricians to cut holes in metal boxes.
- Taper Bit. For drilling a pilot hole for a screw.
- Masonry Bits. Carbide tipped bits for cutting holes in concrete. Best with hammer drill.
- Core Bits. Like a hole saw but tipped with carbide or HSS tips, center locator retracts or is removed after the hole is started. The core is not consumed in the drilling process

Jim's quality list includes: Irwin, Freud, L. W. Fuller, Oldham, Amana and Convalco. De Walt is not on his list.

Recommended speeds (RPM) are as follows: (both large Drill Bits- Small Drill Bits):

Twist Drills: 500-3000, Brad Point: 250-1200, Forstner: 250-700, Hole Saw: 100-350, Spade Drill: 1000-1500.

Here is a quick and easy way to do a squareness check on your drill press table. Take a piece of wire like 16 Gauge

steel wire about 8" long. Bend one end at right angles about one inch from the end. Then bend the other end in the opposite direction, also about one inch from the end.

Put one end of the wire in the drill press chuck. Lay a nice flat piece of wood a little more than a foot long on the table. Adjust the table height and the wire by bending the wire and rotating the chuck so the out board end of the wire just touches the piece of wood.

Rotate the chuck 180 degrees. If the wire touches the wood in the same way as first noted, it's perfect. If not, make appropriate adjustments.

This was a great program, Jim. I learned several new things about drilling!

**Special Member Benefit from
our newest Sponsor:**

Plans NOW

Join the PlansNOW Treasure Hunt and win TOOLS! Visit PlansNOW.com and click on the PlansNOW Pirate for details. And while you're there, use your 15% discount on all the plans and techniques in the store.

Your e-coupon word is: KCGuild

Read more about our newest Sponsor on our web site or visit them at: **www.PlansNOW.com**

New Web site updates: We now have Links to all reciprocal guilds that are on the web. If they do not have a home page, but have an electronic newsletter, we are posting their newsletter. See the "links" section of our web site.

Want to help cut guild monthly costs? Consider receiving the newsletter via email. It is faster and comes in color. If you are interested, please send an email to Wayne Wainwright at: wwrig@kc.rr.com, or add your email to the Attendance list at the monthly meetings.

Newsletter Deadline: 1st of the month:

Please send all submissions for articles, tips, want ads announcements and anything else to Wayne Wainwright: 816 453-1073 email: wwrig@kc.rr.com

4214 N Brighton Ave KC. MO. 64117

Special Feature

Erl Poulin

Rural Australian Computer Terms

- Log on - Make the Barbie hotter.
- Log off - Don't add any more wood.
- Monitor - Keep an eye on the Barbie.
- Download - Getting the firewood off the ute.
- Floppy Disk - What you get from trying to carry too much firewood.
- Window - What to shut when it's cold outside.
- Screen - What to shut in the mosquito season.
- Byte - What the mosquitoes do.
- Chip - A bar snack.
- Micro chip - What's left in the bag after you eat all the chips.
- Modem - What you do to the lawns.
- Dot matrix - Old Dan Matrix's wife.
- Laptop - Where the cat sleeps.
- Software - The plastic knives and forks they give you in economy class.
- Hardware - The real stainless steel cutlery.
- Mouse - What eats the grain in the shed.
- Mainframe - What holds up the shed.
- Web - What a spider makes.
- Web site - The shed or under the verandah.
- Cursor - Someone who swears.
- Search Engine - What you do when the ute won't go.
- Upgrade - Steep hill.
- Server - The person at the hotel who brings the counter lunch.
- Mail Server - The person at the hotel who brings the mail.
- Sound Card - The one who wins the hand of 500.
- User - The neighbor who keeps borrowing stuff.
- Network - When you have to repair your fishing net.
- Internet - Complicated fish net repair method.
- Netscape - When a fish maneuvers out of reach.
- Online - When you get the laundry hung out.

- Offline - When the pegs let go and the washing falls to the ground.

Taken from the Riverina Woodworkers Club newsletter, May, 2002, Mount Austin, New South Wales, Australia

Woodcraft

Woodcraft - 8645 Blue Jacket:

A Woodworking Show like no other

March 14th, 15th & 16th

- Free admission!
- Free parking!
- Free Demos
- Discounts on selected items
- Classes

Vendor Reps for:

Jet - Delta - DeWalt - Porter Cable

Woodturning, Dovetails, Bandsaws, Hand Planes, Table Saws, Sharpening, Kreg Jig, New Routers and more!

For Sale Items:

Antique "Hall & Brown" Jointer Planer

- 12" X 6" double belt, single phase drive w/ 2 Knives, Babbitt bearings.

Bill Ryczek Day: 816 898-0361 Night: 816 320-3422

8" - 1/2 hp craftsman table saw

- with blade, cutoff guide, magnetic feather board and rip fence for \$75.

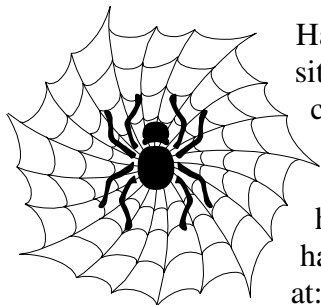
Craftsman wood lathe

- with three and four jaw metal lathe type chucks for \$75.

Jack Swafford at (913) 648-6126.

Web Words

Wayne Wainwright

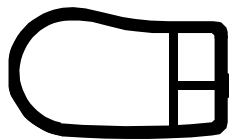


Have you been to our web site recently? Over the last couple of months, there have been a few changes to the site. More content has been added. If you haven't yet, visit us online at:

<http://www.kcwoodworkersguild.org>.

In addition to the newsletter, and our gallery of pictures "in color", there are areas where you can learn a little about other members, - **Member of the Month**, or sites that we feature - **Featured Site**. This month, we are featuring a small company called Vintage Games. They make plans for board games. If you need to make "just the right" game for a family member, this is a great place to find a plan.

Under the "Sponsor" pages, you will find our newest sponsor - "**PlansNOW**".



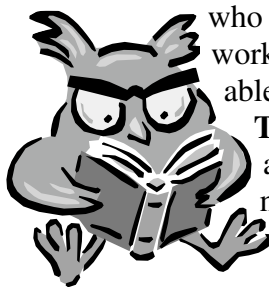
Here, you have access to the most popular plans from **Woodsmith**, **ShopNotes** and **Workbench** magazines. And

did I mention you can get them at a discount simply by being a member of the Kansas City Woodworkers guild? **Check out the special member benefit on page 4 of this newsletter.**

Need a book to do some research or read up on a particular technique? Don't want to stand in line at the monthly meetings searching for that "right book"? Search the on-line catalog of available books instead. Then, when you come to the meetings, just put in a request for the specific book you are interested in.

Take a look at our "**Links**" section and see other guild sites, our favorite links and links of some of our members own sites. If you have a link you would like to share with everyone, send it my

way (even if it is your own)!



The newest feature on the site is targeted for people who want to "Learn" more about Woodworking. You will find a list of available educational resources - "**Schools / Training**" both locally and nationally on our site. Whether you are a non-woodworker or an advanced professional, you will find something here.

It is currently a small list, but keep returning and you will see it grow. If there is something in particular you would like to see on our site, please don't hesitate to let me know and we will do the best we can to make it happen.

Please note: The guild does not endorse any specific school or program, but makes this information available to our members as a courtesy so you can find resources that may be helpful to you.

We will soon add a "**For Sale**" and "**Wanted**" section on the site. If you have something to sell, or a tool you would like to have, let me know and we will get it added. This is a supplement to the for sale section of our newsletter. The site lets people everywhere have access to the item you may have for sale and increases the chance you will be able to sell it.

If you have a friend who would like to become a member, they can go to our web site to read more about the guild - "**About Us**" and what we do, and even fill out a membership form - "**Join**" online. If they are not sure they want to join, they can receive a free copy of the "electronic" version on Woodwords by signing up online.

There are other new features coming to the site, so make sure you go there regularly to see the changes that are happening, and as always, **Your Participation** makes it easier.

The web site is a place meant to share information with our members and non-members alike, so don't hesitate to send me articles, updates or just plain "fun" things you would like to see there. See my contact information on page 4.

Show & Tell Pictures



Paul Anderson's two wood carvings, one from pine and one from mahogany finished with shellac.



Dick Chaney's drawer front turning tools.



Bill Webb's picture frame made of cherry with a mahogany stain and sealer and finished with spray on polyurethane.



Russ Amos' Peach Pit Monkey carved out of a peach pit.



Wayne Suter's gorgeous Jewelry Chest made of walnut and finished with wipe on polyurethane.



Rocking chair



Raymond Graham's caned chair finished with varnish



Tool show display



P.O. Box 413922
Kansas City, MO. 64141

Minutes

Visitors and new members:

Visitors: Jim Suedmeyer, Bill Hartman, Michael Chrane, Joe Panasz, Al Bany, Byron Barron, Gene Haney, Trent Glannan.
New members: Bill Jilesen Note: If names are misspelled, please send a message to the editor for correction - Thanks.

News:

- The Woodworking Show in Overland Park, KS was a resounding success for the Kansas City Woodworkers Guild. A big thanks to everyone who displayed work. The new location seemed to work well. Jim Ramsey was presented an award for doing such a good job - and he even managed to keep us close to the concession stand which was greatly appreciated by our president.
- Dave Roth advised that he now has 43 members recruited for the Mentor's Roster. He also noted that the display boards for our sponsoring members are now complete.

2003 dues are due now! If dues are not received at the March meeting, newsletter delivery will have to be suspended.

Flag Cases:

A total of 21 Flag Cases (for families of 9-11 victims) have been completed and delivered to date. The guild will not make any more.

Raffle:

- John Morrison won the tool carrier harness, Kevin McAndrew got the Wood Magazine CD's, Dan Hurley took the DeWalt palm sander, Russ Baker got a pair of leather gloves, Leo Hernandez got the extension cord caddy, Chris Kunzle won the 126 piece tool set, Wayne Wainwright lucked out "again" with a set of 3 tarps, Ray Torres took the hardware bins, Jim Doyle won the set of 4 clamps and Russ Baker cleaned up with the little bucket of hand cleaner.



Nametag prizes:

- Kevin McAndrew took the Micro Rasp, Fred Chael got a set of miniature screwdrivers, Russ Clausing got a pair of cloth gloves, Janet Wilson also got a set of miniature screwdrivers, Don Inbody won the multi-tip screwdriver set, Joe Lesko got the triple outlet and Jim Suedmeyer got the other set of cloth gloves.

Show participation Prizes:

- Russ Amos won a work stool called a "Car with Seat"; Don Inbody won a set of router bits and Jim Bany got the tool carrier kit.

Tool Talk:

"Tool Talk" again generated a lively discussion about member's recent tool acquisitions. Interesting how opinionated woodworkers can be! This portion of our meeting is evolving into an excellent forum for information exchange.

Calendar

Executive Meetings, 7:30 pm At Fred Chael's home, 4821 State Line Road, KCMO.

Guild meetings, 7:00 p.m., Roanoke Presbyterian Church, 1617 W. 42nd St., To reach us "during the meetings, call: KCMO. (816) 561-8177

Executive Meetings **2003** Guild Meetings

January 15th	January 17th
February 19th	February 20th
March 19th	March 20th
April 16th	April 17th
May 21st	May 22nd
June 18th	June 19th
July 16th	July 17th
August 20th	August 21st
September 17th	September 18th
October 15th	October 16th
November 19th	November 20th
December 17th	December 18th

Fred has agreed to lend his home for the monthly board meetings. All members are welcome at any board meeting. A call to Erl Poulin or Jim Bany is all that is necessary.

Show and Tell:

Wayne Suter had a gorgeous Jewelry Chest made of walnut and finished with wipe on polyurethane.

Fred Chael showed us an oversized Acrylic Plastic Square he made for making his kitchen cabinets.

Raymond Graham had a caned chair which he finished with varnish. This is the chair that he caned at the woodworkers show as a demonstration.

Bill Webb showed a picture frame made of cherry with a mahogany stain and sealer and finished with spray on polyurethane.

Russ Amos had a peach pit monkey carved out of a peach pit. He says it was hand carved by a Hobo.

Dick Chaney showed us a drawer front turning.

Paul Anderson had two wood carvings, one from pine and one from mahogany finished with shellac.