

Instructions for configuring your free VCarve Pro software

For your files to merge seamlessly with the Guilds Master Copy of VCarve Pro you must follow these instructions.

Open the return email from Vectric and accept the invitation to join the Guild Makerspace by clicking on the link as shown in Figure 1. (If you cannot locate the invitation email in your inbox, check your spam folder). When you accept the invitation, you will be asked to set up an account that the Guild Makerspace will use to confirm you have been granted access to use the Master Makerspace Edition of VCarve Pro. If you already have an account with Vectric use the credentials (email address and password) associated with that account to sign in.

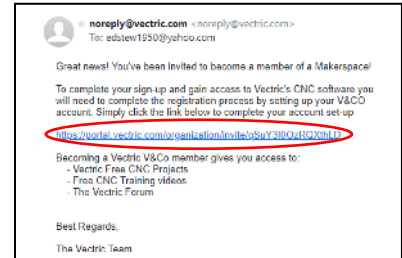


Figure 1

Be certain to recall your email address and password associated with your Vectric account, you will be required to use it to sign in to the Master Makerspace Edition of VCarve Pro at the Guild.

Figure 2

Follow the on-screen (Figure 2) prompts to either sign in to your Vectric account or set up your Vectric account if you do not already have one.

In the box labeled “Company Name” enter the email address associated with your Vectric account.

Fill in the other fields as indicated and click on “Sign Up”.

You will then be directed to a page notifying you that the Guild Makerspace Administrator will have access to your name and email address. See Figure 3. (We already have that information because you sent us a request to send you the invitation to join). You need to click on the box “Accept”.

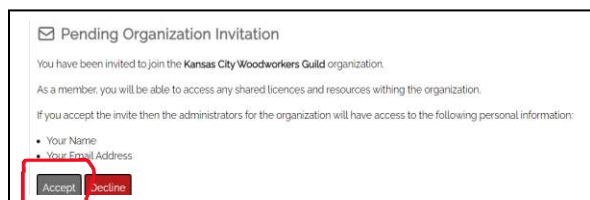


Figure 3

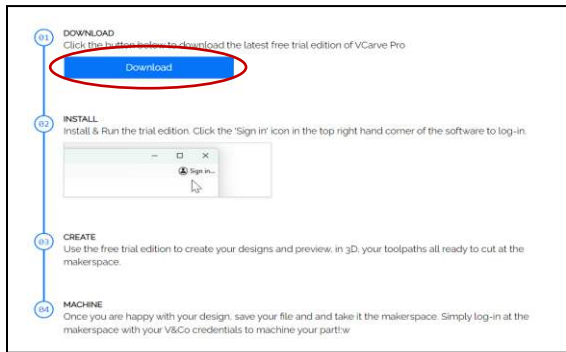


Figure 4

In the next screen (Figure 4) click on “DOWNLOAD”. Depending on your internet connection it may take several minutes for the download to complete.

Once the download is complete open your Download folder and choose the VCarve Pro set up folder. In the popup window choose the appropriate language and in the next window choose “Next” (Figure 5).

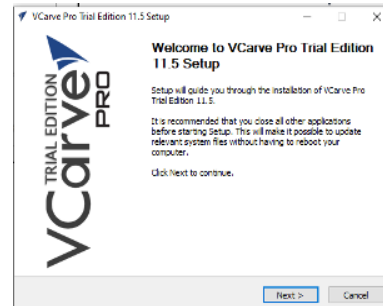


Figure 2

In the next window labeled “License Agreement” choose “I Agree”. [Feel free to read the full agreement, if you wish, before clicking on the “I Agree” button].

In the next window labeled “Choose Components” Click on the “Next” button without changing anything in the window.

In the next window labeled “Choose Install Location” click on the “Next” Button.

In the following window labeled “Choose Start Menu Folder” click on the button labeled “Install”. The installation process will take several minutes.

When the installation is complete you will receive a pop-up window labeled “Completing VCarve Pro Trial Edition 12.0 Set UP”. Choose “Finish”.

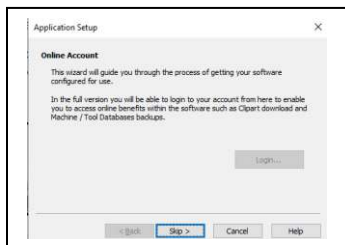


Figure 6

VCarve Pro Makerspace Edition is now installed on your computer, however, you now need to complete the “Application Setup”. (See Figure 6)

Click on the “Skip” button on the next two popup windows and on the third popup window click on “Cancel”. Another popup window will ask you if you wish to see the “Release Notes” for the version you downloaded, choose the appropriate button and click on it.

Congratulations. VCarve Pro is now ready for you to design and toolpath your projects. Remember that when you bring your project to the Guild to create the G-Code you will need to sign-in to the Master copy of VCarve Pro Makerspace Edition using the credentials (email address and password) you use to sign into your Vectric account.