



Kansas City Chipper

Sandy Prentice – President • Paul Cast – Vice President • Mike Lawrence – Secretary • Mike Resch-Treasurer

Minutes of Meeting

Call To Order

The meeting was called to order at 7:00 p.m. by President Sandy Prentice. Officers were introduced. The meeting agenda was reviewed. Members were reminded to wear their name tags. The importance of wearing name tags was discussed.

Secretary's Report

The June 29, 2010 minutes were accepted as presented.

Treasurer's Report

The treasurer's report was given by Mike Resch and was accepted as presented.

Friendships and Concerns

Some of our members are having or have recently had surgeries or illnesses. Some of those are Terry Barker, Dennis Broockerd, Jerry Reinhardt and Harvie Farnam. Please remember them in your thoughts and prayers.

Old Business

We recently received a very nice thank you letter on behalf of The Faith Lutheran Church because of our donation. They indicated in the letter that they appreciate us and hope that we continue to have our meetings at their location.



Carving Theme for August

Summer Heat!

Thanks to our Web Master Ken Prentice, our By Laws and Constitution are now on the club's web site. So if you

want to know what the duties of the club officers are, or how the meetings and the club is supposed to be run, its all there. Check it out at:

<http://www.kcwoodcarver.org/bylaws.html>

Lately we have been discussing getting our club library started. Last month we had some books donated and we just had several more books donated by Randy George. Thanks Randy!

Randy has also volunteered to be our club librarian. We appreciate him very much for that.

Our library is now growing and we would like to ask that anyone who has woodcarving related books that they do not need, please donate them to the club's library. When we have new people come into the club or existing members that are interested in the books we have in our library we can loan them out. Contact Randy for library related information.

Minutes of Meeting

New Business

Nominating Committee

As spokesperson for the nominating committee, Marty Epping announced the new slate of officers to be voted on at the August meeting. Those nominated are:

President - David McCool

Vice President - Paul Cast

Secretary - Mike Lawrence

Treasurer - Mike Resch

The election will be held at our August 31st meeting.

Those who are elected to office in August will be installed at our September meeting.

Audit Committee

Sandy made an announcement that the club needed an audit committee to do an audit of our finances as we are required to do each fiscal year. Ed Burton volunteered and will be auditing the club's books.

Carving Activities Report

Sandy got a notice from the Woodworker's Guild advising

that they are sponsoring a "Grandparents of Small Children's Workshop", (for adults only). It's a demonstration of how to get small kids involved in your craft by using different tools and methods. Sandy said that it might be something we might want to think about to get kids involved in woodcarving in similar ways.

September Social

As a reminder, Sandy mentioned that September, in addition to being the month that officers are installed is also the month that we have our Annual Pot Luck Social. So be thinking about that and mark it on your calendars.

Show Committee Report

Show Chairman Ed Zinger reports the need for a committee to find another place to hold our show. He is concerned about the possibility of rising costs and fees at our present facility. He discussed the pros and cons of various locations considered in the past, the proven benefits of our past

advertising, and the need to reduce our cost of putting on our show. As show chairman Ed explained how and why he manages the show in the way he does. The show committee is meeting regularly to discuss, plan for, and resolve issues related to our show.

Our most recent Show Committee Meeting was held on August 9th. The next Show Advertising & Work Group Meeting is scheduled to be held at 7:00 p.m., on September 13, 2010, at the Faith Lutheran Church. You are invited to attend.

Door Prizes

Thanks to Jim Willis for donating the nice catalpa wood for door prizes at this meeting.



Listed Below Are Reference Material Resources Recommended By Jim Willis For Use In the Carving of Realistic Animals (See Article on His Program Next Page)

Cyclopedia Anatomicae

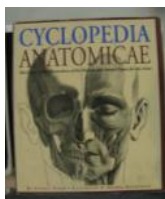
By Gyorgy Fehér

An Atlas of Animal Anatomy for Artists

By W. Ellenberger

Animal Anatomy for Artists

By Eliot Goldfinger



The Artist's Guide to Animal Anatomy

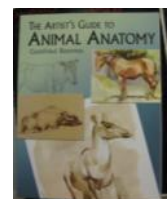
By Gottfried Bammes

The Artists Guide to Drawing Realistic Animals

By Doug Lindstrand

Catalog & Resources from

McKenzie Taxidermy Supply



July Program - Carving Animal Heads & Faces

By: Jim Willis

Introduction by: Sandy Prentice



If you ever wanted to carve realistic animals you didn't want to miss this program. Jim Willis, who is well known for his woodcarving and artistic abilities, presented us with an excellent program that was informative and interesting. Just a sample of what was included follows:

Jim pointed out that in addition to thinking about what kind of animal are you going to carve, animals are pretty much divided up into two classes, "Prey" and "Predator". There are lots of differences in animals but you really need to know which of these classes your animal fits into. One of the main differences in prey and predator animals are the eyes, where they are set or positioned on the face. On a prey animal, the eyes are set and more focused primarily toward the front of the head. On a predator, the eyes are set wider, more to the sides of their head to give them a wider range of vision. Knowing this will help you as you lay out and carve your animal.

Research is one of the most important things you can do prior to starting to work. He uses all the resources he can which includes, photographs of all views and angles possible, actual animal skulls which you might be able to obtain from taxidermists, taxidermy catalogs, taxidermy specimens, and animal anatomy books (a list is included on the previous page). With these resources Jim creates his own patterns with 3 views. He covered and demonstrated how he projects one view to another to keep all views in perspective. Jim says that you can use any type wood you want but that he usually uses basswood or catalpa for his carvings.

Thank you Jim for an excellent program!



Carving of the Month



At Left
1st Place Winner
By: Randy George



At Right
2nd Place Winner
By: Bob Miller

From The Show Table



Patrotic Egg - Jeanie Holle

USA - Ed Burton

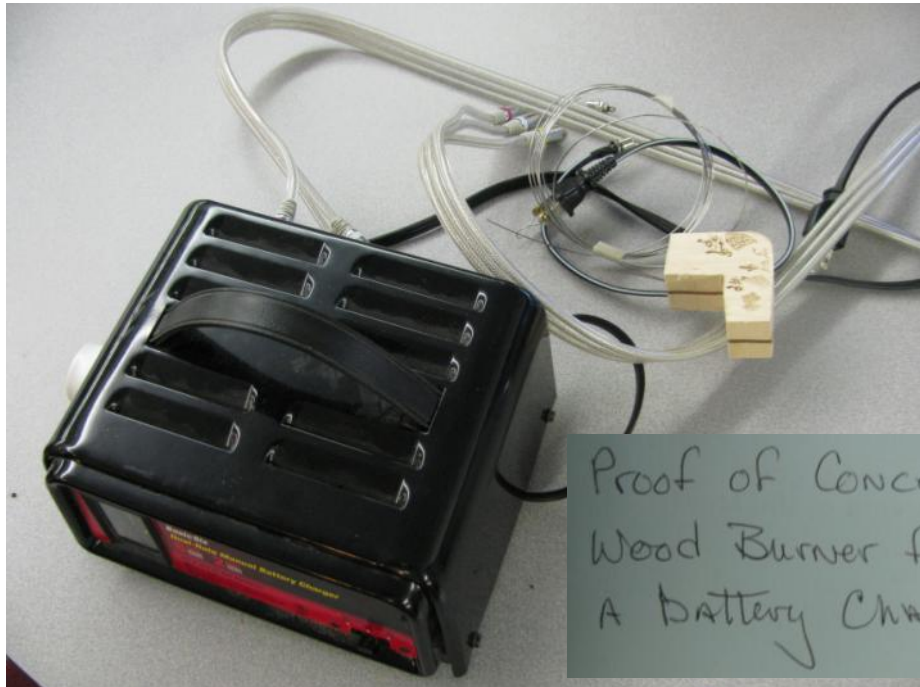
Jingle Bell Jivin' Santa
Ed Zinger

Elephant
Ed Zinger

Skunk - Ed Burton

Wood Burner from Battery
Charger by
John Siebert

The plans John used are online at:
[http://www.svwoodturners.org/
Newsletters/2008/7-2008.PDF](http://www.svwoodturners.org/Newsletters/2008/7-2008.PDF)



Proof of Concept
Wood Burner from
A Battery Charger



BULLETIN BOARD

- **August Meeting** - Tuesday, August 31, 2010, 7:00 pm, Faith Lutheran Church, 67th & Roe, Prairie Village, KS. We will be voting on officers for the upcoming 2010—2011 term.
- **Carving Theme** - The theme for the August 31st. meeting will be **“Summer Heat.”**
- **Dues are due - September 1, 2010** for the 2010 / 2011 year. Dues must be recived by October 15, 2010 to get your Name (& information) in the new Club Roster.
- **Show Advertising & Work Group Meeting** - is scheduled to be held at 7:00 p.m., on September 13, 2010, at the Faith Lutheran Church.
- **August Program** - Totem Pole Carving, by Paul Cast

Carving Opportunities		
Roger T. Sermon Community Center Truman and Noland Roads Each Monday morning at 8:00 am For info. Call 816-325-7370	Faith Lutheran Church 67 th and Roe, Prairie Village, KS Each Monday evening at 6:00 pm Info. Call 913-897-2521 or 816-322-0094	North Cross United Methodist Church 1321 N.E. Vivion Road, Kansas City, MO Each Tuesday evening at 7:00 pm For information call 816-741-8718
Blue Springs Parks & Recreation Building 400 N.W. Vesper St., Blue Springs, MO There is a \$1.00 per person fee. Each Wednesday afternoon 1:00pm - 4:00pm	Tomahawk Ridge Community Center 11902 Lowell Street, Overland Park, KS There is a \$3.00 per session fee. Each Tuesday morning at 9:00 am	Covenant Presbyterian Church Neiman and College Blvd, Overland Park, KS Each Thursday morning at 9:00 am Free - For information call 913-491-5422

Member and Carving Related Web Sites			
<u>Kansas City Wood Carver's Club</u>	<u>Barbara Akers Gallery of Artwork</u>	<u>Marty Epping Epping Creations</u>	<u>Lynn Doughty Out West Gallery</u>
<u>Lynn Doughty Out West Blogspot</u>	<u>Mike Lawrence The Woodcarvers Cabin</u>	<u>Loren Moseley On The Cutting Edge</u>	<u>Tim Rundall The Woodchip Shop</u>
<u>Rod Schrivener Rods Woodshop</u>	<u>Jim Willis Wild Life Woodcarver</u>	<u>Ed Zinger Woodcarving Rendezvous</u>	<u>Andy & Joyce Anderson The Knot Hole</u>
<u>National Woodcarvers Association</u>	<u>Carving Magazine</u>	<u>Woodcarving Illustrated Magazine</u>	<u>Wood Magazine</u>
<u>Woodcarver Online Magazine</u>	Contact information for the editor, Mike Lawrence E-mail: mike@thewoodcarverscabin.com 8108 NW Miami St., Weatherby Lake, MO 64152 Phone 816-651-0379		<u>Caricature Carvers of America</u>

The Kansas City Wood Carvers Club was organized for the benefit of amateur and professional woodcarvers. It's purpose is for education, competition and fellowship with other carvers.



Just a Reminder! Dues are due Sept. 1, 2010! Enclose **\$18.00** for First Member and **4.00** for **each** additional member Make Check payable to: **K C Woodcarvers, Inc.**

Mail to: K. C. Woodcarvers Membership
Marty Epping, Chairperson
4754 N W Flintridge Rd.
Riverside, MO 64150-1108

2010 - 2011

Your Membership Num.(s) _____ Home Ph: (____) _____

Name (Please Print) _____

Street, Route, P.O. Box _____

City _____ State _____ Zip _____

E-Mail Address _____ E-Mail **ONLY** Newsletter

